

See Warranty on page 4 for important information about commercial use of this product.

## Operating Instructions

Please read and save these instructions. Read carefully before attempting to assemble, install, operate or maintain the product described. Protect yourself and others by observing all safety information. Failure to comply with instructions could result in personal injury and/or property damage! Retain instructions for future reference.



# Air Hammer

## Description

Air hammers are designed to remove unwanted material in a variety of locations or to cut through rusted bolts and metal. The air hammers make tough jobs easier because of high air power while the regulator can allow for precision control. This hammer uses standard .401 Parker taper hammer bits.

## Unpacking

When unpacking this product, carefully inspect for any damage that may have occurred during transit.

## General Safety Information

### CALIFORNIA PROPOSITION 65

#### **DANGER**

You can create dust when you cut, sand, drill or grind materials such as wood, paint, metal, concrete, cement, or other masonry. This dust often contains chemicals known to cause cancer, birth defects, or other reproductive harm. Wear protective gear.



This product is part of a high pressure system and the following safety precautions must be followed at all times along with any other existing safety rules.

1. Read all manuals included with this product carefully. Be thoroughly familiar with the controls and the proper use of the equipment.
2. Only persons well acquainted with these rules of safe operation should be allowed to use the air tool.



**CAUTION** Do not exceed the maximum operating pressure of the air tool (90 psi). This can reduce the life of the tool.

3. Do not exceed any pressure rating of any component in the system. Maximum operating pressure of 90

psi is measured at the tool inlet while the tool is running. The pressure drop between the compressor and tool needs to be compensated for at the compressor.

4. Disconnect the air tool from air supply before changing tools or attachments, servicing and during non-operation.

#### **WARNING**

Safety glasses and ear protection must be worn during operation.



5. Do not wear loose fitting clothing, scarves, neck ties or jewelry when operating any tool. Loose clothing or jewelry may become caught in moving parts and result in serious personal injury.
6. Do not depress trigger when connecting the air supply hose.
7. Always use attachments designed for use with air powered tools. Do not use damaged or worn attachments.
8. Never trigger the tool when not applied to a work object. Attachments must be securely attached. Loose attachments can cause serious injury.
9. Protect air lines from damage or puncture.
10. Never point an air tool at oneself or any other person. Serious injury could occur.
11. Check air hoses for weak or worn condition before each use. Make sure all connections are secure.

#### **WARNING**

Release all pressure from the system before attempting to install, service, relocate or perform any maintenance.



12. Keep all nuts, bolts and screws tight and ensure equipment is in safe working condition.

13. Do not put hands near or under moving parts.

14. Always secure workpiece in a vise or clamp. Do not place hands on the black cylinder or spring retainer when operating the tool.

**WARNING** The quick connect retainer must be used to hold the hammer in place. Personal injury can occur if the hammer is not secure.

**WARNING** Do not misuse this product. Excessive exposure to vibration, work in awkward positions and repetitive work motions can cause injury to hands and arms. Stop using any tool if discomfort, numbness, tingling or pain occur, and consult a physician.

## Assembly

### SYSTEM SETUP

PLEASE REFER TO AIR TOOL AND SPRAY GUN SET-UP (IN170102AV) FOR AIR SYSTEM HOOK-UP INSTRUCTIONS.

Using fittings or air hoses which are too small can create a pressure drop which will result in a loss of power in the tool.

**NOTE:** Do not install a quick coupler set between the tool and whip hose.

### AIR TOOL SETUP

#### ALL MODELS

Ensure tool is not connected to air supply, then place tool upside down on workbench.

**WARNING** Never carry a tool by the hose or pull the hose to move the tool or a compressor. Keep hoses away from heat, oil and sharp edges. Replace any hose that is damaged, weak or worn.

## Pre-Operation

Air tools require lubrication throughout the life of the tool. Proper

**REMINDER:** Keep your dated proof of purchase for warranty purposes! Attach it to this manual or file it for safekeeping.

## Pre-Operation (Cont'd)

lubrication is the owner's responsibility. Use Campbell Hausfeld airtool oil (Part No. ST127000AV) to lubricate, clean and inhibit rust in one step. Failure to lubricate and maintain the air tool properly will dramatically shorten the life of the tool and will void the warranty.

**⚠WARNING** *This air tool requires lubrication before initial use and before and after each additional use.*

### AIR PISTON LUBRICATION

The air piston must be lubricated daily. An air piston cannot be oiled too often.

**⚠WARNING** *Disconnect the chisel/hammer from the air supply before lubricating.*

1. Turn the chisel/hammer upside down.
2. While pulling the trigger, pour a teaspoon of Campbell Hausfeld oil in the air inlet.

**⚠WARNING** *Cover exhaust port with a towel before applying air pressure. Oil will discharge through the exhaust port during the first few seconds of operation after an airtool has been lubricated. Failure to cover exhaust port can result in serious injury.*

3. Connect the chisel/hammer to the air supply and cover the exhaust port with a towel. Run the chisel/hammer for 7 to 10 seconds. Oil will discharge from the exhaust port when air pressure is applied. If the piston does not cycle, install a bit into the spring retainer. Be careful not to allow the towel to catch in the spring retainer.

## Operation

### SPRING RETAINER

The spring retainer holds the hammer in place. The retainer must be **securely** attached (See Figure 1). The retainer is a normal wear item and should be replaced when worn. Replace with MP2896 (2) piece hammer spring set. The retainer unscrews for easy hammer insertion.

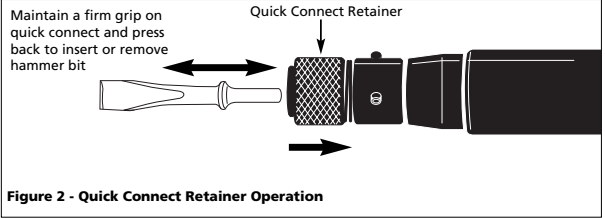


Figure 2 - Quick Connect Retainer Operation

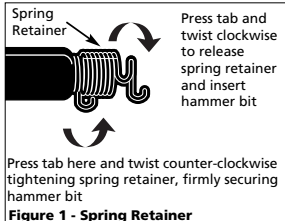


Figure 1 - Spring Retainer

### QUICK CONNECT RETAINER

**⚠WARNING** *The quick connect retainer or spring retainer must be used to hold the hammer in place. Personal injury can occur if the hammer is not secure.*

The quick connect retainer holds the hammer in place. The retainer must be **securely** attached and the three set screws must be tightened completely using a hex wrench (See Figure 2). The retainer pulls back for easy hammer insertion and snaps forward to hold the hammer. The retainer is a normal wear item and should be replaced when worn. Replace with PA1039.

### REPAIRING JAMMED PISTON

1. Tools required include: hammer and punch.
2. Attempt to free jammed piston using punch (See Figure 3).

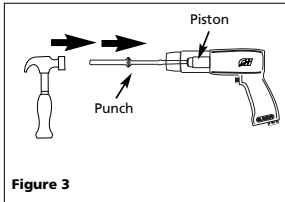


Figure 3

3. If piston is jammed, disassemble barrel from housing. Use punch to push piston through barrel (See Figure 4).

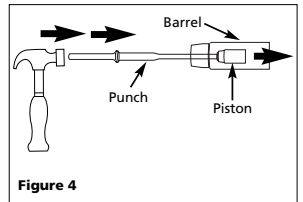


Figure 4

4. Reassemble barrel and piston.

## Maintenance

### STORAGE

The chisel/hammer must be lubricated before storing. Follow the air piston lubrication instructions with an exception to step 3. Only run the chisel/hammer for 2 to 3 seconds instead of 7 to 10 seconds because more oil needs to remain in the chisel/hammer when storing.

### Technical Service

For information regarding the operation or repair of this product, please call 1-800-543-6400. If you are calling from Ohio or outside the continental United States, please call collect: 1-513-367-1182.

### Replacement Parts Information

For information regarding where to order replacement parts, call toll free 1-800-543-8622. Please provide the following information:

- Model number
- Stamped code
- Part number and description

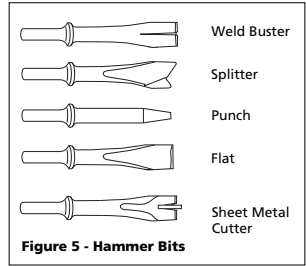
## Maintenance (Continued)

Address parts correspondence to:  
 Campbell Hausfeld  
 100 Production Drive  
 Harrison, Ohio 45030 U.S.A.

**NOTE:** Hammers are not included with some tools. Any hammer with a .401 Parker taper shank size can be used. Campbell Hausfeld offers five

commonly used hammers (Part number PA1003 or MP2875\*).

\*PA1003 is a five piece set of hammers each six inches in length. MP2875 is a 4 piece set of hammers each three inches in length (does not include the sheet metal cutter).



## Troubleshooting Chart

| Symptom  | Possible Cause(s)                                      | Corrective Action   |
|--|--|---|
| Tool runs slowly or will not operate                     | 1. Grit or gum in tool                                 | 1. Flush tool with Campbell Hausfeld air tool oil, gum solvent, or an equal mixture of SAE 10 motor oil and kerosene. If Campbell Hausfeld oil is not used, lubricate, tool after cleaning  |
|  | 2. No oil in tool                                      | 2. Lubricate tool according to lubrication instructions in the Pre-Operation section  |
|  | 3. Low air pressure                                    | 3. Adjust the compressor regulator to tool maximum while the tool is running free   |
|  | 4. Air hose leaks                                      | 4. Tighten and seal hose fittings if leaks are found  |
|  | 5. Pressure drops                                      | 5. Be sure hose is properly sized. Long hoses or tools using large volumes of air may require a hose with an I.D. of 1/2" or larger depending on total hose length  |
|  | 6. Regulator set too low                               | 6. Adjust regulator until tool reaches maximum speed  |
| Moisture blowing out of tool                             | 1. Water in tank                                       | 1. Drain tank (See air compressor manual). Oil tool and run until no water is evident. Oil tool again and run 1-2 seconds   |
|  | 2. Water in air lines/hoses                            | 2a. Install a water separator/filter (PA2121). <b>NOTE:</b> Separators work properly only when air steam is cool. Locate separator/filter as far as possible from compressor<br>2b. Install an air dryer<br>2c. Anytime water enters tool, tool should be oiled immediately |
|  |  |   |
| Chisel/Hammer is jammed and will not move back and forth | 1. Chisel/hammer piston and barrel are dirty or rusty  | 1a. Heavily oil tool to free up piston<br>1b. Clean piston and barrel with air tool oil and remove any burrs on piston or barrel surfaces*<br>1c. Replace worn piston and cylinder*<br>1d. Anytime water enters tool, tool should be oiled immediately                      |
|  | 2. Chisel/hammer piston and barrel are rusted together | 2. Remove piston and de-rust. Replace piston and cylinder if needed*  |
|  |  |   |
|  |  |   |

\* When reassembling the cylinder to the housing, use Loctite® on the cylinder threads.

### **Limited Warranty**

1. **DURATION:** From the date of purchase by the original purchaser as follows: Standard Duty Products - One Year, Serious Duty Products - Two Years, Extreme Duty Products - Three Years.
2. **WHO GIVES THIS WARRANTY (WARRANTOR):** Campbell Hausfeld / Scott Fetzer Company, 100 Production Drive, Harrison, Ohio, 45030, Telephone: (800) 543-6400
3. **WHO RECEIVES THIS WARRANTY (PURCHASER):** The original purchaser (other than for purposes of resale) of the Campbell Hausfeld product.
4. **WHAT PRODUCTS ARE COVERED BY THIS WARRANTY:** Any Campbell Hausfeld nailer, stapler, air tool, spray gun, inflator or air accessory supplied or manufactured by Warrantor.
5. **WHAT IS COVERED UNDER THIS WARRANTY:** Substantial defects in material and workmanship which occur within the duration of the warranty period.
6. **WHAT IS NOT COVERED UNDER THIS WARRANTY:**
  - A. Implied warranties, including those of merchantability and FITNESS FOR A PARTICULAR PURPOSE ARE LIMITED FROM THE DATE OF ORIGINAL PURCHASE AS STATED IN THE DURATION. If this product is used for commercial, industrial or rental purposes, the warranty will apply for ninety (90) days from the date of purchase. Some States do not allow limitation on how long an implied warranty lasts, so the above limitations may not apply to you.
  - B. ANY INCIDENTAL, INDIRECT, OR CONSEQUENTIAL LOSS, DAMAGE, OR EXPENSE THAT MAY RESULT FROM ANY DEFECT, FAILURE, OR MALFUNCTION OF THE CAMPBELL HAUSFELD PRODUCT. Some States do not allow the exclusion or limitation of incidental or consequential damages, so the above limitation or exclusion may not apply to you.
  - C. Any failure that results from an accident, purchaser's abuse, neglect or failure to operate products in accordance with instructions provided in the owner's manual(s) supplied with product. Accident, purchaser's abuse, neglect or failure to operate products in accordance with instructions shall also include the removal or alteration of any safety devices. If such safety devices are removed or altered, this warranty is void.
  - D. Normal adjustments which are explained in the owner's manual(s) provided with the product.
  - E. Items or service that are normally required to maintain the product, i.e. o-rings, springs, bumpers, debris shields, driver blades, fuses, batteries, gaskets, packings or seals, fluid nozzles, needles, sandblast nozzles, lubricants, material hoses, filter elements, motor vanes, abrasives, blades, cut-off wheels, chisels, chisel retainers, cutters, collets, chucks, rivet jaws, screw driver bits, sanding pads, back-up pads, impact mechanism, or any other expendable part not specifically listed. These items will only be covered for ninety (90) days from date of original purchase. Underlined items are warranted for defects in material and workmanship only.
7. **RESPONSIBILITIES OF WARRANTOR UNDER THIS WARRANTY:** Repair or replace, at Warrantor's option, products or components which are defective, have malfunctioned and/or failed to conform within duration of the warranty period.
8. **RESPONSIBILITIES OF PURCHASER UNDER THIS WARRANTY:**
  - A. Provide dated proof of purchase and maintenance records.
  - B. Deliver or ship the Campbell Hausfeld product or component to the nearest Campbell Hausfeld Authorized Service Center. Freight costs, if any, must be borne by the purchaser.
  - C. Use reasonable care in the operation and maintenance of the products as described in the owner's manual(s).
9. **WHEN WARRANTOR WILL PERFORM REPAIR OR REPLACEMENT UNDER THIS WARRANTY:** Repair or replacement will be scheduled and serviced according to the normal work flow at the servicing location, and depending on the availability of replacement parts.

This Limited Warranty applies in the United States, Canada and Mexico only and gives you specific legal rights. You may also have other rights which vary from state to state or country to country.