

QP Series Model QP-15

Parts Manual

Record of Change 103

This manual contains important safety information and must be carefully read in its entirety and understood prior to installation by all personnel who install, operate and/or maintain this product.

On-line product registration, parts ordering and warranty information is available at www.quincycompressor.com

Manual No. 2022201601

July 2014 Edition

TABLE OF CONTENTS

Serial Number Identification.....	2
Ordering Replacement Parts.....	2
Crankcase Lubricant Capacity.....	2
Quin-Cip Lubricant.....	2
Crankcase & Cylinders Group.....	3
Gasket Set.....	3
Sterling Blue Oil & Filters Kit	3
Crankshaft Group.....	4
Overhaul Kit	4
Bearing Carrier Group.....	5
Connecting Rod & Piston Groups	6-7
Sterling Blue Ring Kit.....	6
Head Groups	8-15
Sterling Blue Valve Kit	8
Manifold Group.....	16
Control Piping Schematics.....	17
Pilot Valves.....	18
Pilot Valve Repair Kit.....	18
Differential Setting Charts	18
Suction Valve Unloader Assemblies.....	19
Decals	19
Typical Unit Repair Parts List.....	20

INTRODUCTION

This manual provides information for the Model QP-15 reciprocating compressor, per Record of Change 103.

The Model QP-15 is an aircooled, two stage, four cylinder, V-type, pressure lubricated compressor, with up to 175 PSI continuous pressure capability. It has a 4.5" low pressure bore and a 2.5" high pressure bore, with a 3.5" stroke. This compressor can be run at 600-1150 RPM.

Available options include:

-head unloaders

CHANGES

since previous printing dated December 2011:

The bearing carrier was redesigned with a new oil pump including an oil filter.

SERIAL NUMBER IDENTIFICATION

The unit serial number identification tag is located on the air tank top plate. The basic compressor serial number decal is located on the side of the crankcase opposite the oil fill side. *Fill in the numbers from your compressor unit and basic compressor in the corresponding spaces provided here, and reference this page when ordering replacement parts.*

Unit Serial Number

Basic Serial Number

All replacement parts are to be ordered through an authorized Quincy distributor. Insist on genuine Quincy parts only! Failure to do so may void warranty.

ORDERING REPLACEMENT PARTS

Prompt service can be rendered on repair parts orders if the following information is given:

- Item 1)** the model number, record of change number, & serial number.
- Item 2)** the exact part number needed. (Do not order by item numbers.)
- Item 3)** the exact quantity needed.
- Item 4)** the preferred type of transportation.

CRANKCASE LUBRICANT CAPACITY

Model	Capacity
QP-15	3 qts. - 30 oz. (3.73 lit.)

QUIN-CIP LUBRICANT

Refer to the chart below to order Quin-Cip-D or Quin-Cip lubricant from your local authorized Quincy distributor.

Quin-Cip-D Lubricant (synthetic)	
SAE 30 (ISO 100)	
Quart	115468Q
Case (12 Qts.)	115468C
Quin-Cip Lubricant	
SAE 10W (ISO 32)	
Quart	112541Q032
Case (12 Qts.)	112541C032
SAE 20 (ISO 68)	
Quart	112542Q068
Case (12 Qts.)	112542C068
SAE 30 (ISO 100)	
Quart	112543Q100
Case (12 Qts.)	112543C100

CAUTION !

Refer to the QP Industrial / Air Master Series instruction manual for vital lubrication information.

CAUTION !

Follow all safety precautions outlined in the QP Industrial / Air Master Series instruction manual.

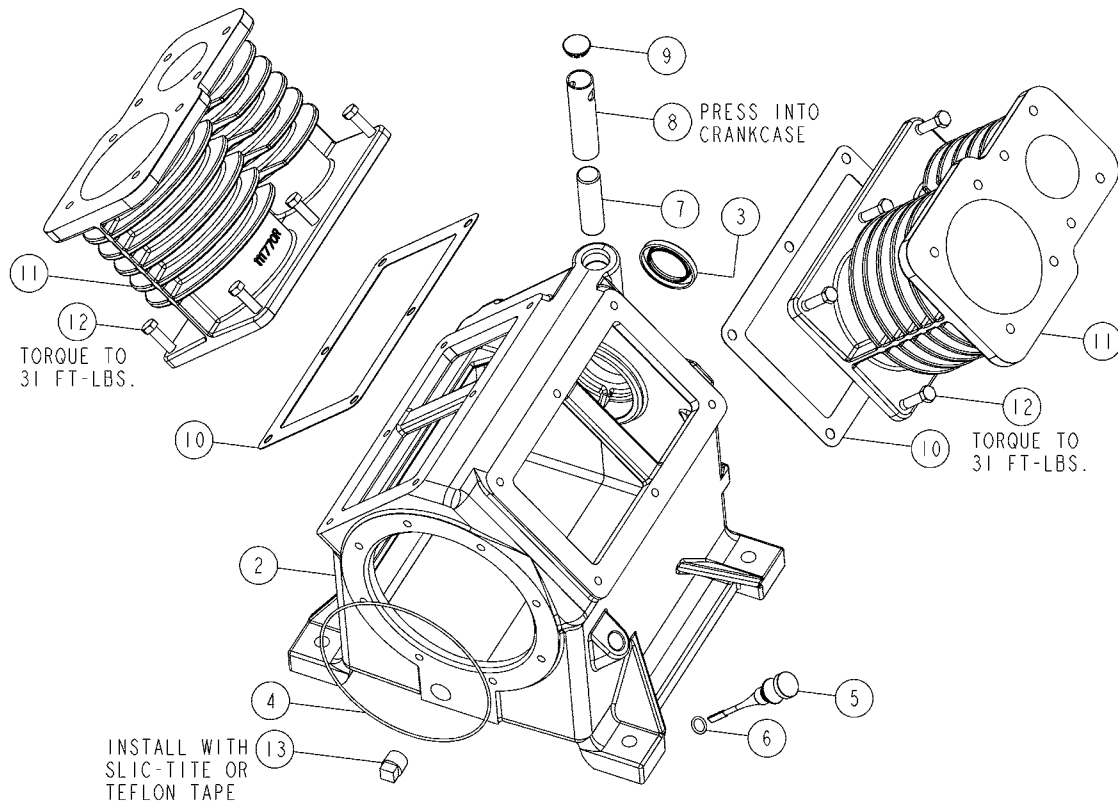
WARNING !

Do not operate this compressor without a totally enclosed belt guard or any other required safety equipment.

DANGER !

Air used for breathing or food processing must meet OSHA 1910.134 or FDA 21 CFR 178.3570 regulations. Failure to do so may cause severe injury or death.

CRANKCASE & CYLINDERS GROUP 2021040502



ITEM	PART NUMBER	QTY	DESCRIPTION
1	111930-002	1	AY, CRANKCASE
2	111771-002	1	CRANKCASE
3	111781-001	1	OIL SEAL, VITON
4	22749-167	1	O-RING, VITON
5	110070-6	1	DIPSTICK
6	123157-112	1	O-RING
7	111333	1	FILTER
8	113947	1	BREATHER TUBE
9	40825	1	HOLE PLUG
10	111782	2	CYLINDER GASKET
11	111770	2	CYLINDER
12	115037-L14	12	SCREW, CAP HEX, SEALANT, GRADE 5
13	2057	1	PIPE PLUG

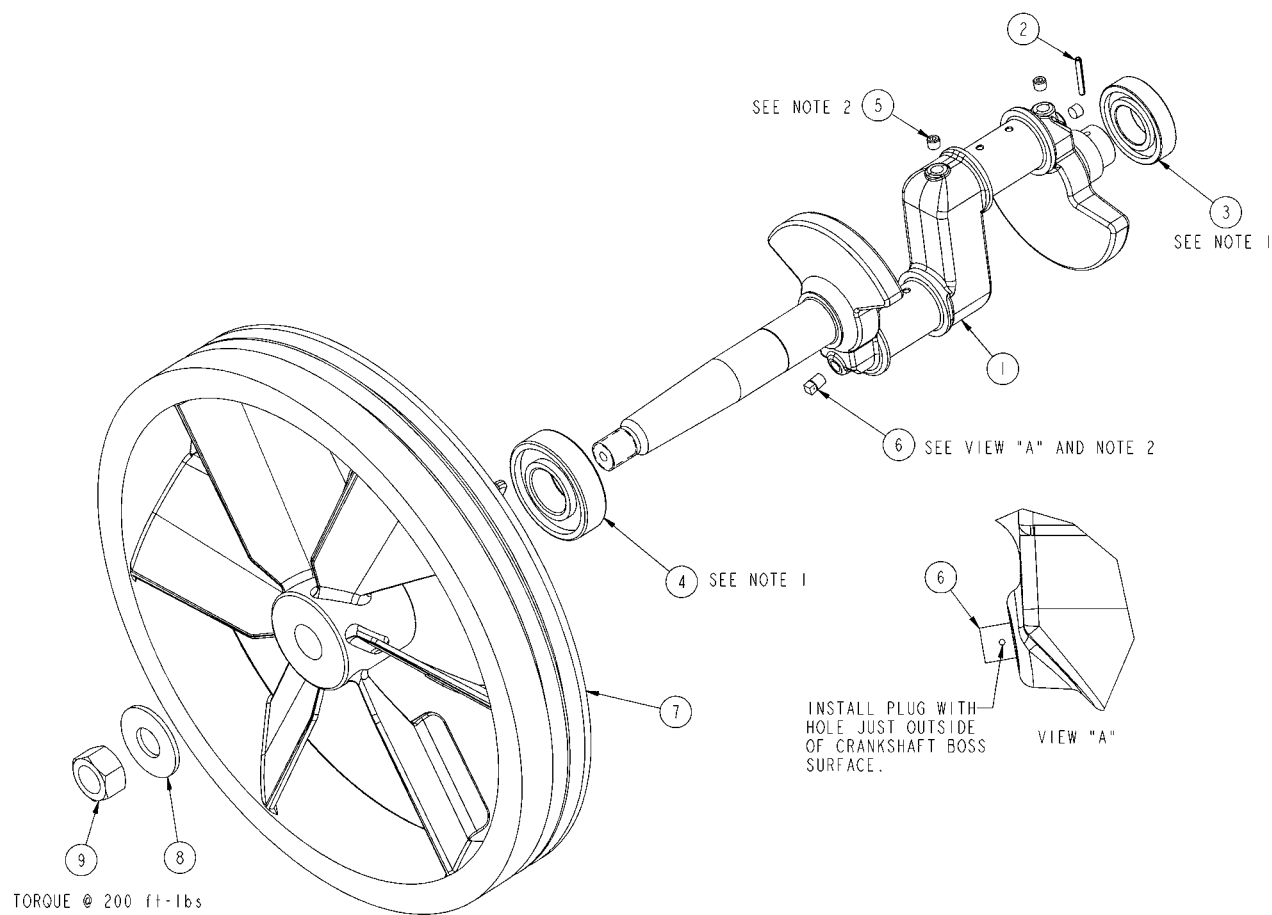
Gasket Set 112085

Item #	Qty.	Part Number	Description
1		111781-001	oil seal
2		111274-001	gasket, head to valve plate
2		111229-001	gasket, head to valve plate
2		111228-003	gasket, cylinder to valve plate
2		111228-004	gasket, cylinder to valve plate
1		22749-167	"o"ring, 3/32 wide x 7.19 o.d.
1		123157-112	"o"ring, 3/32 wide x .69 o.d.
2		111782	gasket, cylinder to crankcase
8		112708-908	"o"ring, silicone

Sterling Blue Oil & Filters Kit 2022103601

Item #	Qty.	Part Number	Description
2		110377E100	air filter element
1		2023400100	oil filter
4 qt.		115468Q	Quin-Cip-D synthetic lubricant

CRANKSHAFT GROUP 111933-001

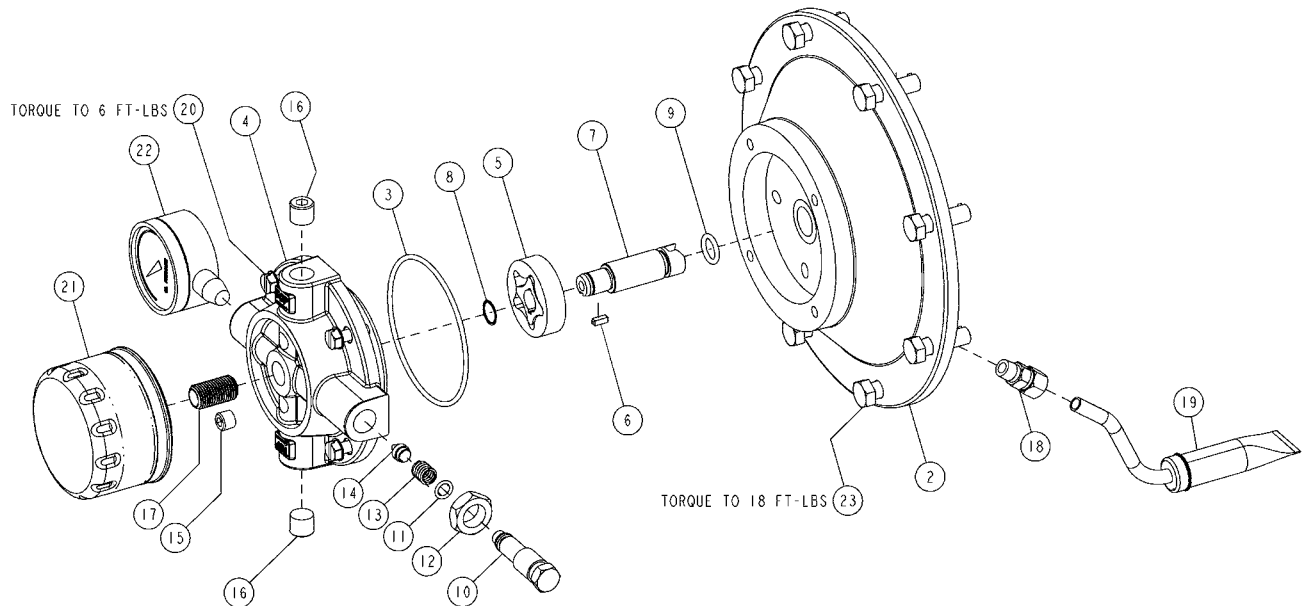


CRANKSHAFT GROUP 111933-001 BILL OF MATERIALS			
ITEM	PART NUMBER	QTY	DESCRIPTION
1	111775-002	1	CRANKSHAFT
2	110705-F17	1	ROLL PIN, 3/16 X 1.38
3	111780	1	BALL BEARING
4	111779	1	BALL BEARING
5	2755S	3	PIPE PLUG, 1/8 NPT
6	116075	1	PIPE PLUG WITH HOLES
7	111776	1	SHEAVE, 19.50 O.D., 2 GROOVE, B SECT. CCW
8	110428W100	1	FLAT WASHER, 1
9	112352	1	NUT, HEX 1-14UNF, L.H. THREAD

- NOTES - UNLESS OTHERWISE SPECIFIED:
1. APPLY LOCTITE® 272 TO OUTER DIAMETER OF BEARING WHEN ASSEMBLING INTO CRANKCASE.
 - 2) INSTALL WITH SLIC-TITE® OR TEFLON® TAPE.

Overhaul Kit 2022101400			
Item #	Qty.	Part Number	Description
2		2022115101	piston ring set, LP
2		2022114801	piston ring set, HP
1		2022104800	gasket set
2		2024403252	valve plate assembly
2		2024403152	valve plate assembly
2		2023400852	air filter element
2		2025026400	piston pin
2		2025024621	piston pin
1		2023402501	breather filter
2		2024409951	connecting rod assembly, LP
2		2024409952	connecting rod assembly, HP
8		0335210509	retaining ring

BEARING CARRIER GROUP 2024400560



2024400560 BEARING CARRIER GROUP			
ITEM	PART NUMBER	QTY	DESCRIPTION
1	2024400550	1	BEARING CARRIER ASSEMBLY (N.S.S. - ORDER KIT)
2	2024400501	1	BEARING CARRIER
3	22749-152	1	O-RING, VITON
4	2024400601	1	OIL PUMP HOUSING
5	160003	1	OIL PUMP
6	160075-001	1	KEY
7	2024200202	1	OIL PUMP DRIVESHAFT
8	6285	1	RETAINING RING
9	22749-112	1	O-RING, VITON
10	5489	1	ADJUSTMENT SCREW
11	22749-011	1	O-RING, VITON
12	124369-P02	1	JAM NUT
13	1160	1	SPRING
14	112857	1	NEEDLE VALVE
15	27555	1	PIPE PLUG, 1/8 NPT
* 16	2719	2	PIPE PLUG, 1/4 NPT
** 17	2023400200	1	FILTER STUD
*** 18	2023200108	1	TUBE FITTING, CONNECTOR, 5/16 TUBE X 1/8 NPT
19	2023400005	1	OIL PICKUP TUBE WITH SCREEN
20	123777-J10	4	MACHINE SCREW
21	2023400100	1	OIL FILTER
* 22	110822	1	OIL PRESSURE GAUGE
23	115037-L14	8	SCREW, CAP HEX, SEALANT, GRADE 5
MAINTENANCE PARTS			
	2023400101		10 PACK OF OIL FILTERS
REPLACEMENT KITS			
	2024400580		BEARING CARRIER ASSEMBLY REPLACEMENT KIT INCLUDES BEARING CARRIER ASSEMBLY, FILTER, GAUGE, AND GASKET

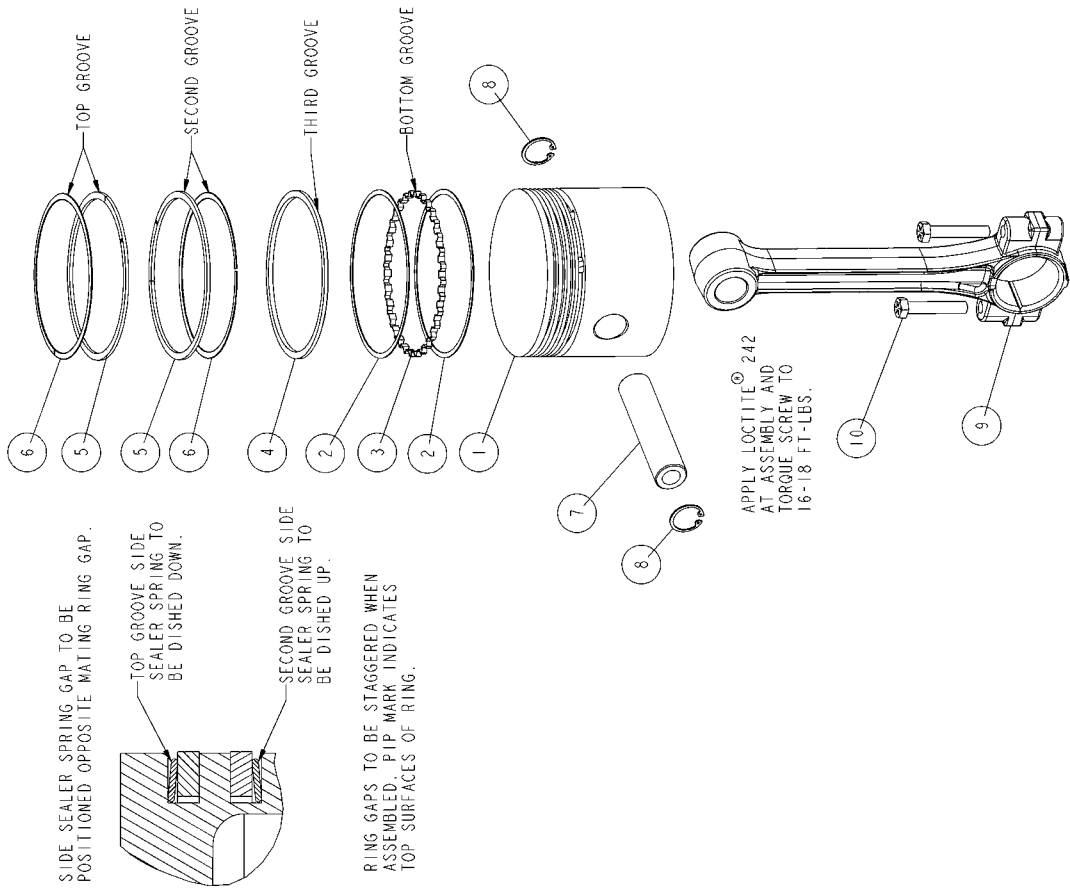
* INSTALL WITH PIPE SEALANT
 ** INSTALL WITH RETAINING COMPOUND
 *** INSTALL WITH PIPE SEALANT ON NPT & THREADLOCKER ON NUT
 N.S.S. = NOT SOLD SEPARATE
 TORQUE VALUES ARE FOR DRY THREADS. TIGHTEN MULTIPLE BOLTS, CAPSCREWS, AND HEX NUTS
 IN A CRISS-CROSS PATTERN. BRING EACH FASTENER TO THE RECOMMENDED TORQUE
 SPECIFICATION IN EVEN INCREMENTS.

CONNECTING ROD & PISTON GROUP 111925-004

(low pressure)

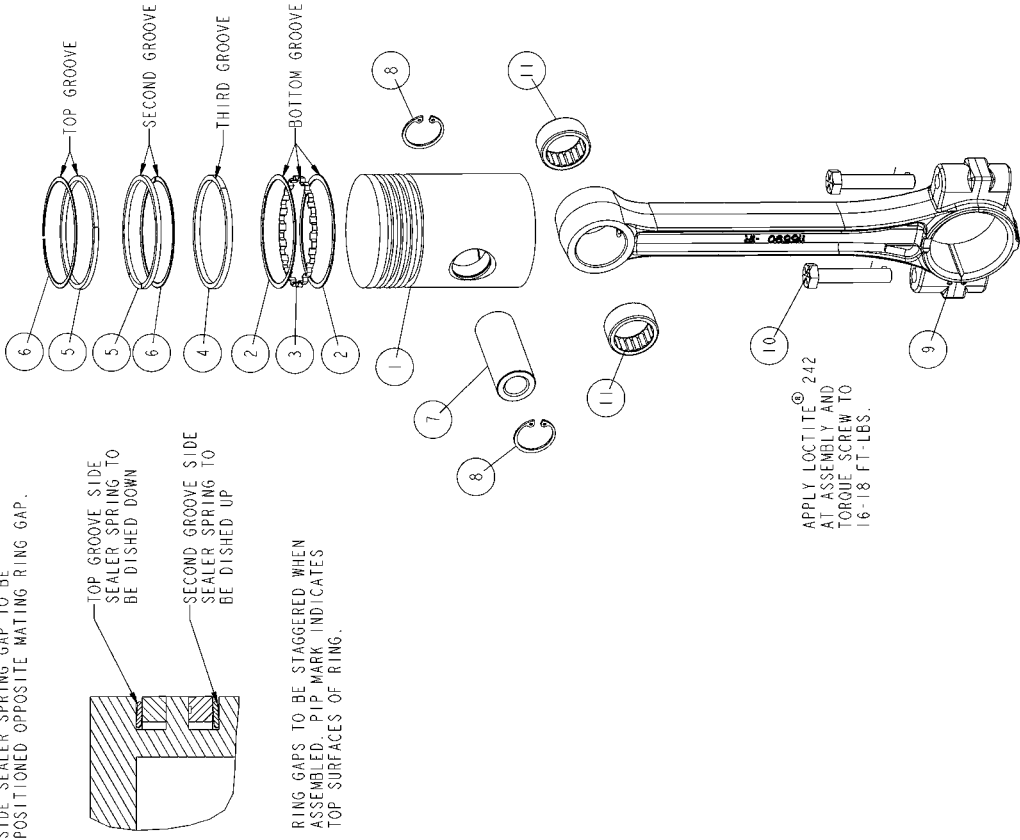
ITEM	PART NUMBER	QTY	DESCRIPTION
1	8643	1	PISTON, LP
2	112781	2	OIL RING RAIL
3	112780	1	OIL RING EXPANDER
4	7351	1	PISTON RING
5	7010	2	PISTON RING
6	7012	2	SPRING, SIDE SEALER
7	8646	1	PISTON PIN
8	8648	2	RETAINING RING
9	111927-005	1	AY CONROD, LP
10	115388-K16	2	SCREW, ZINC, GRADE 8
MAINTENANCE PARTS			
	8166	1	PISTON RING SET
	115814X	1	PISTON ASSEMBLY, LP INCLUDES PISTON, RING SET, PISTON PIN, AND RETAINING RINGS..

Sterling Blue Ring Kit 2022104700		
Item #	Qty.	Part Number Description
	1	112085 gasket set
	1	8161 piston ring set
	1	8166 piston ring set



CONNECTING ROD & PISTON GROUP 111926-004

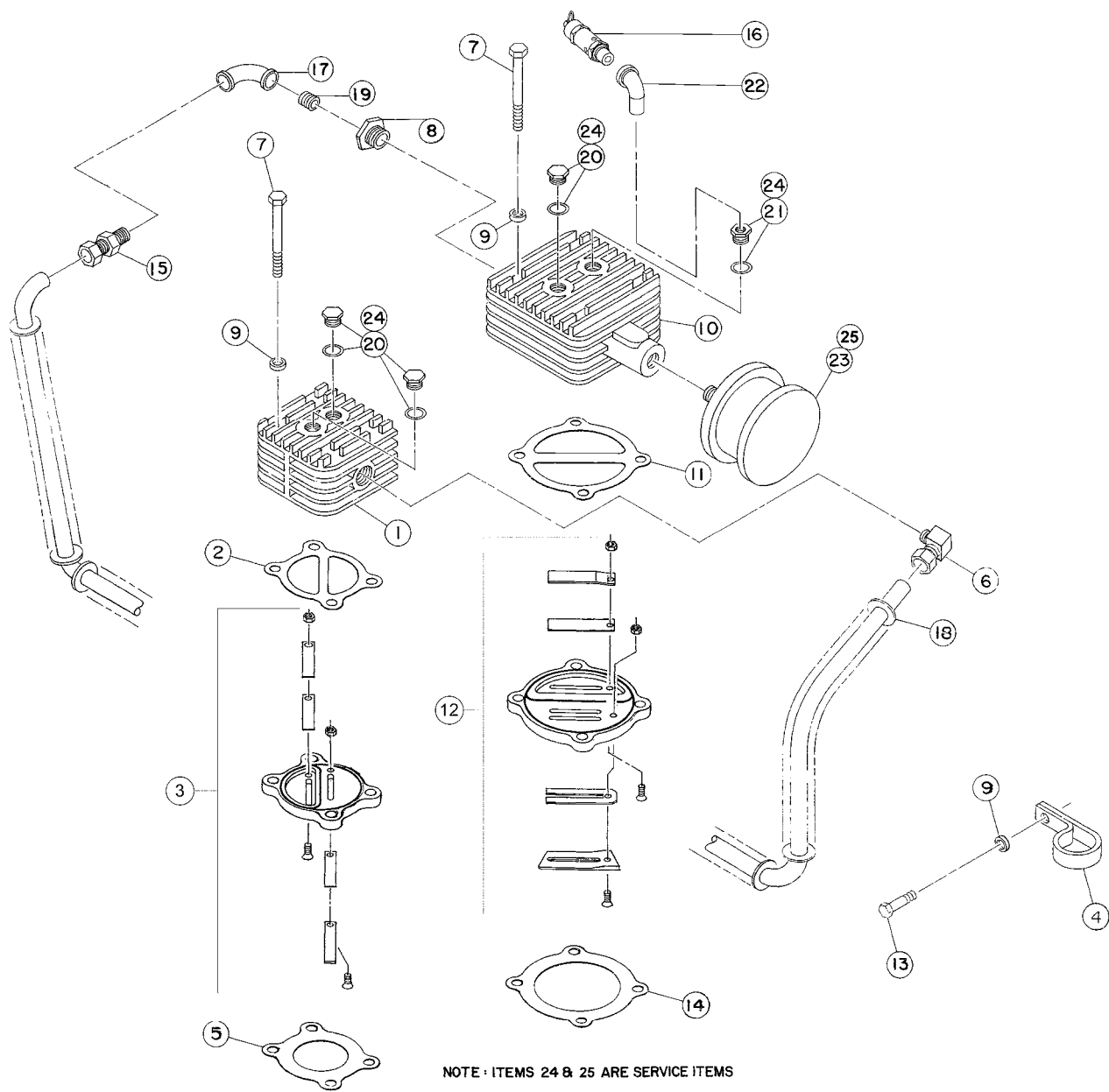
(high pressure)



ITEM	PART NUMBER	QTY	DESCRIPTION
1	1530-001	1	PISTON
2	111281	2	OIL RING RAIL
3	111280	1	OIL RING EXPANDER
4	1652	1	PISTON RING
5	6536	2	RING PISTON
6	6538	2	SPRING, SIDE SEALER
7	110190-021	1	PISTON PIN (N.S.S., ORDER REPLACEMENT PIN ASSEMBLY)
8	8648	2	RETAINING RING
9	111927-004	1	AY, CONROD, H.P.
10	115388-K16	2	SCREW, ZINC, GRADE 8
11	112018	2	NEEDLE BEARING
MAINTENANCE PARTS			
	8161	1	PISTON RING SET
	115815X	1	PISTON ASSEMBLY, HP (STANDARD SIZE) INCLUDES PISTON, RING SET, PISTON PIN, AND RETAINING RINGS.

HEAD GROUP 111935-1

(*right bank / less head unloaders)



Sterling Blue Valve Kit 2022104000			
Item #	Qty.	Part Number	Description
2		110258B097	drive belt
2		112714	valve repair kit
2		112713M15	valve repair kit

HEAD GROUP 111935-1

(* right bank / less head unloaders)

Item Number	Qty.	Part Number	Description
1	1	111115-5	cylinder head, high pressure
2	1	111274-001	gasket, head to valve plate
3	1	111227X2	valve plate assembly, high pressure
4	1	112225-2	tube clamp
5	1	111228-004	gasket, cylinder to valve plate
† 6	1	110919-024	tube fitting, 90° male elbow, 3/4 tube x 3/4 npt
7	8	123478-L25	hex. screw, 3/8-16 unc x 4.00, grade 5 (@ 30 ft.-lbs.)
† 8	1	2392	pipe bushing, 1 npt x 3/4 npt
9	9	110428N038	flatwasher, 3/8
10	1	111118-4	cylinder head, low pressure
11	1	111229-001	gasket, head to valve plate
12	1	111226X2M	valve plate assembly, low pressure
13	1	115037-L12	hex. screw with sealant, 3/8-16 unc x 1.00, grade 5 (@ 30 ft.-lbs.)
14	1	111228-003	gasket, cylinder to valve plate
† 15	1	23271	tube fitting, straight 3/4 tube x 3/4 npt
† 16	1	2961-100	safety valve
17	1	4816	pipe elbow, 3/4 npt
18	1	112130	intercooler (N.S.S.; order Intercooler Replacement Kit)
19	1	125936-010	pipe nipple, 3/4 npt x 2.00
† 20	3	112709-006	plug, 3/4-16 unf ("o"ring included)
21	1	112710-004	adapter, 3/4-16 unf x 1/4 npt ("o"ring included)
22	1	123651-003	pipe elbow, 1/4 npt x 90°
23	1	111550S100	air filter/silencer, hooded
Maintenance Parts			
24	4	112708-908	"o"ring, silicone
25	1	110377E100	air filter element, (fits 111550S100 filter/silencer)
	1	112713M15	Valve Assembly Replacement Kit, LP includes valve plate assembly & gaskets
	1	112714	Valve Assembly Replacement Kit, HP includes valve plate assembly & gaskets
	1	112130K	Intercooler Replacement Kit includes intercooler and nut/sleeve fittings
	1	KQT15B	Head Replacement Kit includes (2) high pressure and (2) low pressure valve assembly replacement kits and (2) air filter elements

*As viewed facing the compressor from the sheave side.

N.S.S. = Not Sold Separate.

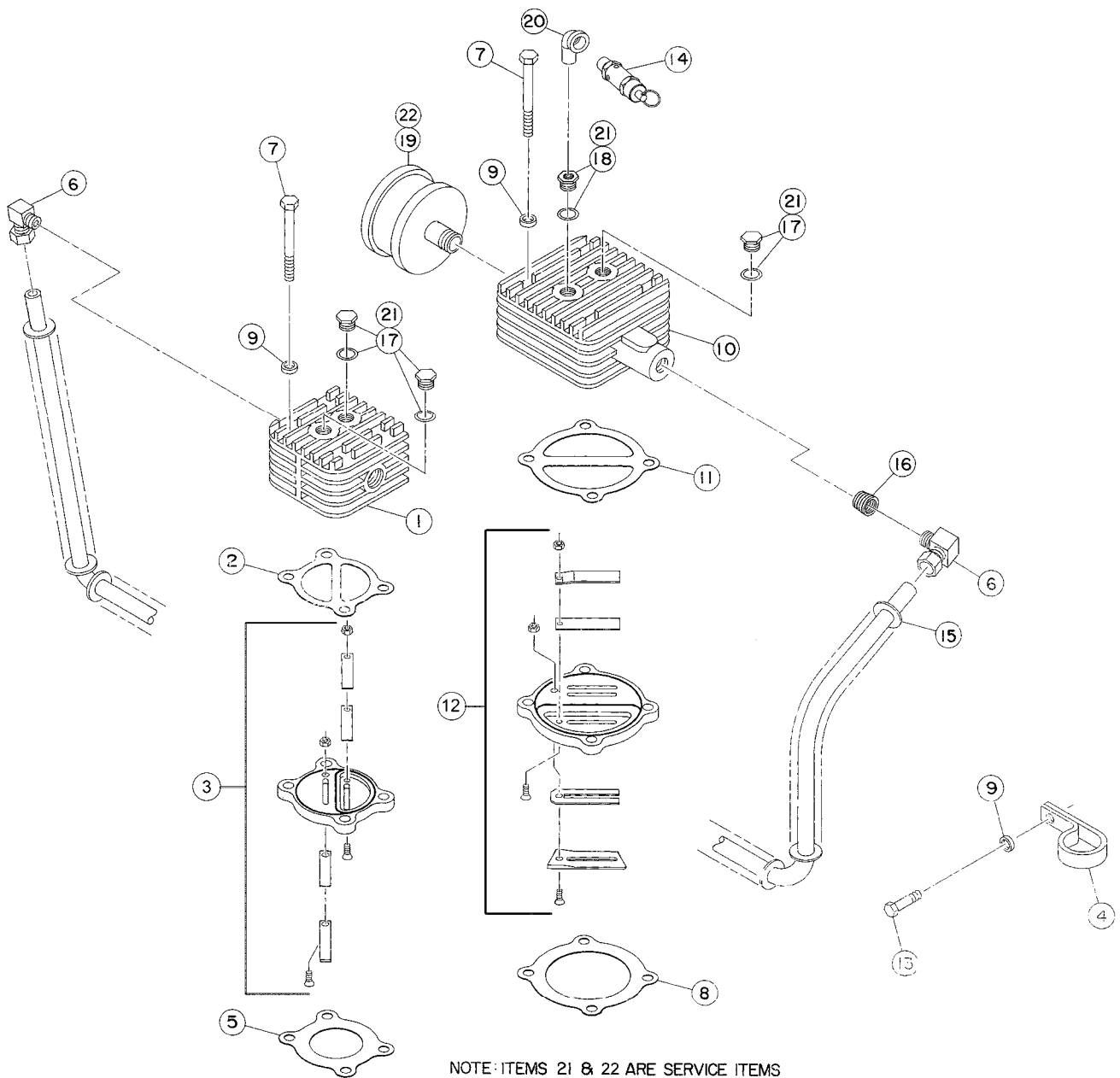
@ Indicates torque value (dry threads).

† Install with pipe sealant.

Note: Tighten all bolts & capscrews in any bolt pattern, evenly bringing each bolt to torque in equal increments, while moving about the bolt pattern. This is particularly true of connecting rod & head bolts.

HEAD GROUP 111936-1

(*left bank / less head unloaders)



NOTE: ITEMS 21 & 22 ARE SERVICE ITEMS

HEAD GROUP 111936-1

(* left bank / less head unloaders)

Item Number	Qty.	Part Number	Description
1	1	111115-5	cylinder head, high pressure
2	1	111274-001	gasket, head to valve plate
3	1	111227X2	valve plate assembly, high pressure
4	1	112225-2	tube clamp
5	1	111228-004	gasket, cylinder to valve plate
† 6	2	110919-024	tube fitting, 90° male elbow, 3/4 tube x 3/4 npt
7	8	123478-L25	hex. screw, 3/8-16 unc x 4.00, grade 5 (@ 30 ft.-lbs.)
8	1	111228-003	gasket, cylinder to valve plate
9	9	110428N038	flatwasher, 3/8
10	1	111118-4	cylinder head, low pressure
11	1	111229-001	gasket, head to valve plate
12	1	111226X2M	valve plate assembly, low pressure
13	1	115037-L12	hex. screw with sealant, 3/8-16 unc x 1.00, grade 5 (@ 30 ft.-lbs.)
† 14	1	2961-100	safety valve
15	1	112129	intercooler (N.S.S.; order Intercooler Replacement Kit)
† 16	1	112825-002	pipe bushing, 1 npt x 3/4 npt
† 17	3	112709-006	plug, 3/4-16 unf ("o"ring included)
† 18	1	112710-004	adapter, 3/4-16 unf x 1/4 npt ("o"ring included)
19	1	111550S100	air filter/silencer, hooded
20	1	123651-003	pipe elbow, 1/4 npt x 90°
			Maintenance Parts
21	4	112708-908	"o"ring, silicone
22	1	110377E100	air filter element, (fits 111550S100 filter/silencer)
	1	112713M15	Valve Assembly Replacement Kit, LP includes valve plate assembly & gaskets
	1	112714	Valve Assembly Replacement Kit, HP includes valve plate assembly & gaskets
	1	112129K	Intercooler Replacement Kit includes intercooler and nut/sleeve fittings

*As viewed facing the compressor from the sheave side.

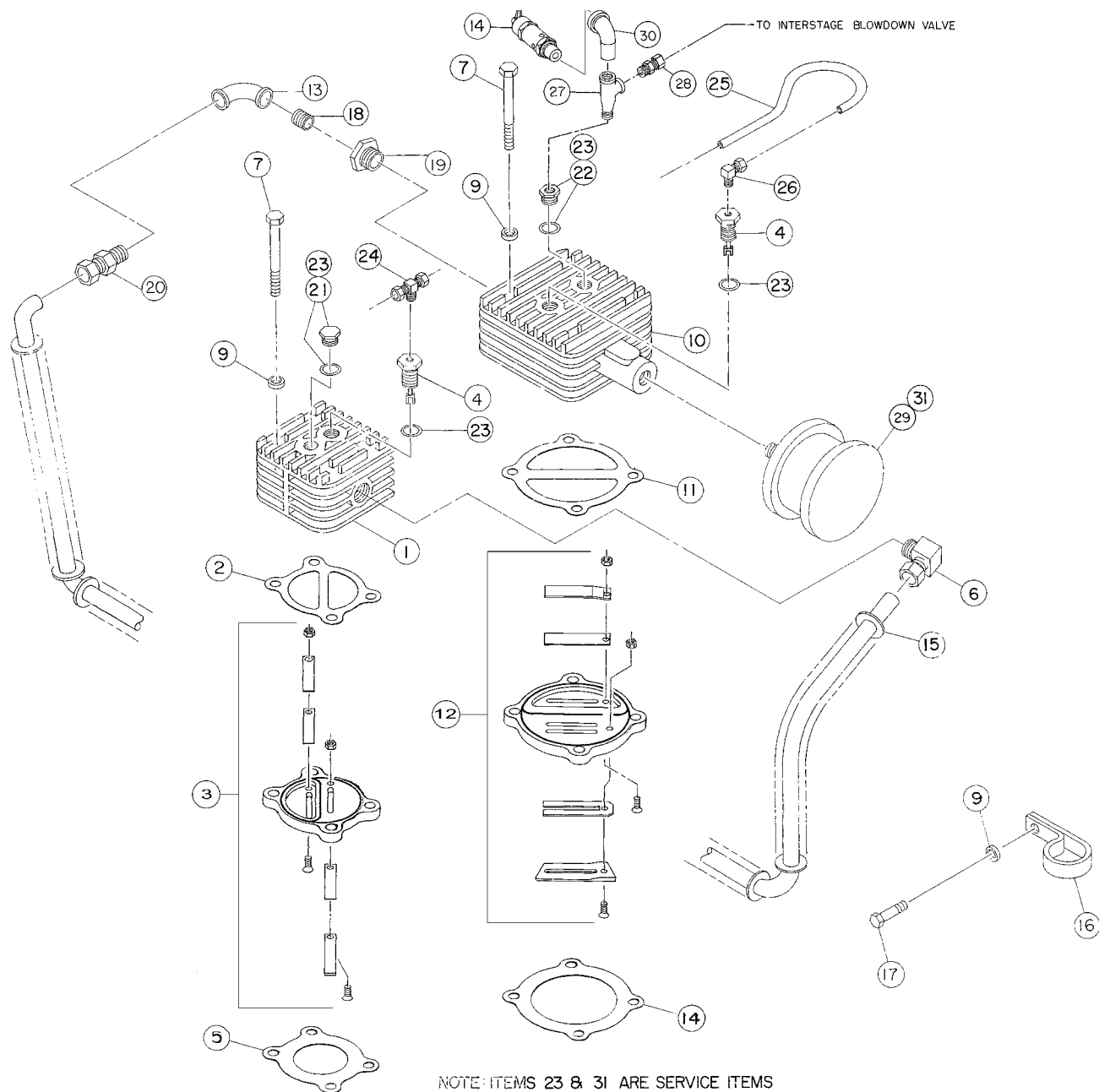
N.S.S. = Not Sold Separate.

@ Indicates torque value (dry threads).

† Install with pipe sealant.

Note: Tighten all bolts & capscrews in any bolt pattern, evenly bringing each bolt to torque in equal increments, while moving about the bolt pattern. This is particularly true of connecting rod & head bolts.

HEAD GROUP 112037-1 (*right bank / with head unloaders)



HEAD GROUP 112037-1

(* right bank / with head unloaders)

Item Number	Qty.	Part Number	Description
1	1	111115-5	cylinder head, high pressure
2	1	111274-001	gasket, head to valve plate
3	1	111227X2	valve plate assembly, high pressure
† 4	2	111591X1	unloader
5	1	111228-004	gasket, cylinder to valve plate
† 6	1	110919-024	tube fitting, 90° male elbow, 3/4 tube x 3/4 npt
7	8	123478-L25	hex. screw, 3/8-16 unc x 4.00, grade 5 (@ 30 ft.-lbs.)
8	1	111228-003	gasket, cylinder to valve plate
9	9	110428N038	flatwasher, 3/8
10	1	111118-4	cylinder head, low pressure
11	1	111229-001	gasket, head to valve plate
12	1	111226X2M	valve plate assembly, low pressure
13	1	4816	pipe elbow, 3/4 npt
† 14	1	2961-100	safety valve
15	1	112130	intercooler (N.S.S.; order Intercooler Replacement Kit)
16	1	112225-2	tube clamp
17	1	115037-L12	hex. screw with sealant, 3/8-16 unc x 1.00, grade 5 (@ 30 ft.-lbs.)
18	1	125936-010	pipe nipple, 3/4 npt x 2.00
† 19	1	2392	pipe bushing, 1 npt x 3/4 npt
† 20	1	23271	tube fitting, straight 3/4 tube x 3/4 npt
† 21	1	112709-006	plug, 3/4-16 unf ("o"ring included)
† 22	1	112710-004	adapter, 3/4-16 unf x 1/4 npt ("o"ring included)
23	2	112708-908	"o"ring, silicone
24	1	124351-004	tube fitting, male branch tee, 1/4 tube x 1/4 npt
25	1	110515-025	copper tube, 1/4 o.d.
26	1	2708	tube fitting, 90° male elbow, 1/4 tube x 1/4 npt
27	1	3003	pipe tee, 1/4 npt x 1/4 npt x 1/4 npt
28	1	110594-005	tube fitting, male connector, 1/4 tube x 1/4 npt
29	1	111550S100	air filter/silencer, hooded
30	1	123651-003	pipe elbow, 1/4 npt x 90°
Maintenance Parts			
31	1	110377E100	air filter element, (fits 111550S100 filter/silencer)
	1	112713M15	Valve Assembly Replacement Kit, LP includes valve plate assembly & gaskets
	1	112714	Valve Assembly Replacement Kit, HP includes valve plate assembly & gaskets
	1	112130K	Intercooler Replacement Kit includes intercooler and nut/sleeve fittings
	1	KQT15D	Head Replacement Kit includes (2) high pressure and (2) low pressure valve assembly replacement kits and (2) air filter elements

*As viewed facing the compressor from the sheave side.

N.S.S. = Not Sold Separate.

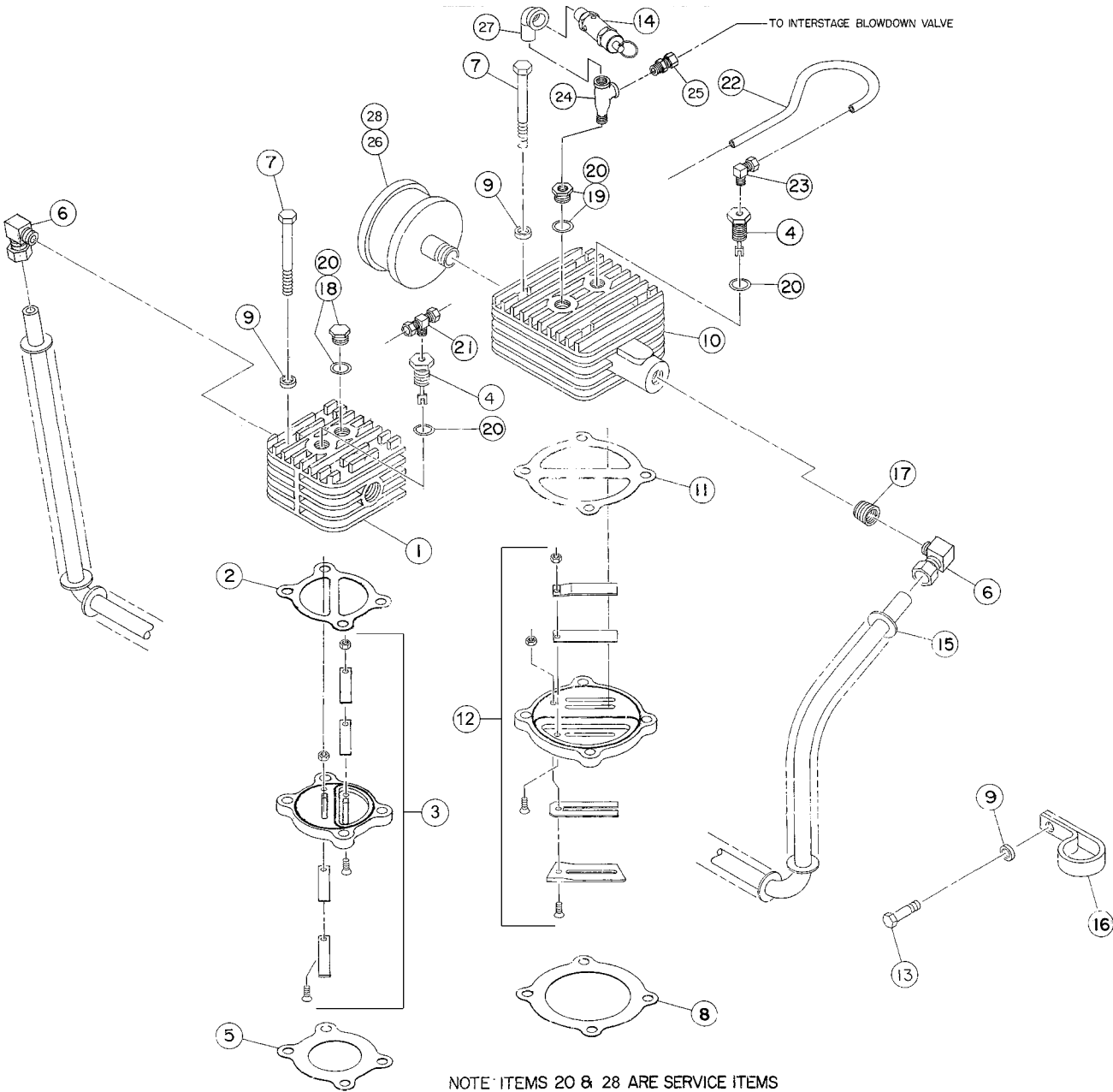
† Install with pipe sealant.

@ Indicates torque value (dry threads)

Note: Tighten all bolts & capscrews in any bolt pattern, evenly bringing each bolt to torque in equal increments, while moving about the bolt pattern. This is particularly true of connecting rod & head bolts.

HEAD GROUP 112038-1

(*left bank / with head unloaders)



HEAD GROUP 112038-1

(*left bank / with head unloaders)

Item Number	Qty.	Part Number	Description
1	1	111115-5	cylinder head, high pressure
2	1	111274-001	gasket, head to valve plate
3	1	111227X2	valve plate assembly, high pressure
† 4	2	111591X1	unloader
5	1	111228-004	gasket, cylinder to valve plate
† 6	2	110919-024	tube fitting, 90° male elbow, 3/4 tube x 3/4 npt
7	8	123478-L25	hex. screw, 3/8-16 unc x 4.00, grade 5 (@ 30 ft.-lbs.)
8	1	111228-003	gasket, cylinder to valve plate
9	9	110428N038	flatwasher, 3/8
10	1	111118-4	cylinder head, low pressure
11	1	111229-001	gasket, head to valve plate
12	1	111226X2M	valve plate assembly, low pressure
13	1	115037-L12	hex. screw with sealant, 3/8-16 unc x 1.00, grade 5 (@ 30 ft.-lbs.)
† 14	1	2961-100	safety valve
15	1	112129	intercooler (N.S.S.; order Intercooler Replacement Kit)
16	1	112225-2	tube clamp
† 17	1	112825-002	pipe bushing, 1 npt x 3/4 npt
† 18	1	112709-006	plug, 3/4-16 unf ("o"ring included)
† 19	1	112710-004	adapter, 3/4-16 unf x 1/4 npt ("o"ring included)
20	2	112708-908	"o"ring, silicone
21	1	124351-004	tube fitting, male branch tee, 1/4 tube x 1/4 npt
22	1ft	110515-025	copper tube, 1/4 o.d.
23	1	2708	tube fitting, 90° male elbow, 1/4 tube x 1/4 npt
24	1	3003	pipe tee, 1/4 npt x 1/4 npt x 1/4 npt
25	1	110594-005	tube fitting, 1/4 tube x 1/4 npt
26	1	111550S100	air filter/silencer, hooded
27	1	123651-003	pipe elbow, 1/4 npt x 90°
			Maintenance Parts
28	1	110377E100	air filter element, (fits 111550S100 filter/silencer)
	1	112713M15	Valve Assembly Replacement Kit, LP includes valve plate assembly & gaskets
	1	112714	Valve Assembly Replacement Kit, HP includes valve plate assembly & gaskets
	1	112129K	Intercooler Replacement Kit includes intercooler and nut/sleeve fittings

*As viewed facing the compressor from the sheave side.

N.S.S. = Not Sold Separate.

† Install with pipe sealant.

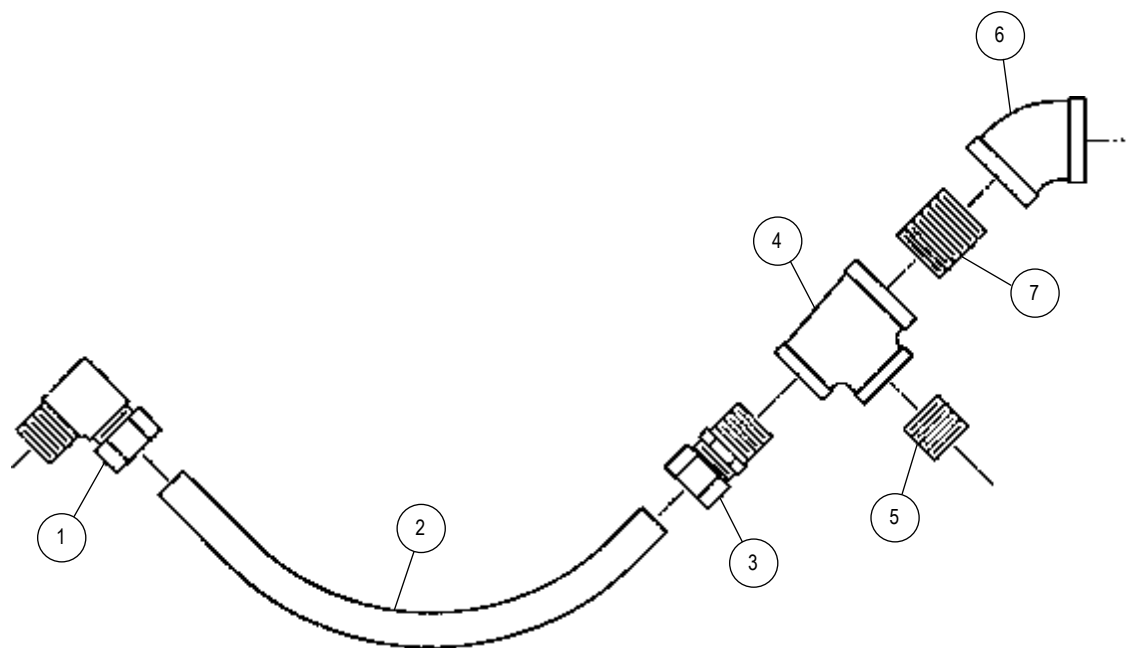
@ Indicates torque value (dry threads)

Note: Tighten all bolts & capscrews in any bolt pattern, evenly bringing each bolt to torque in equal increments, while moving about the bolt pattern. This is particularly true of connecting rod & head bolts.

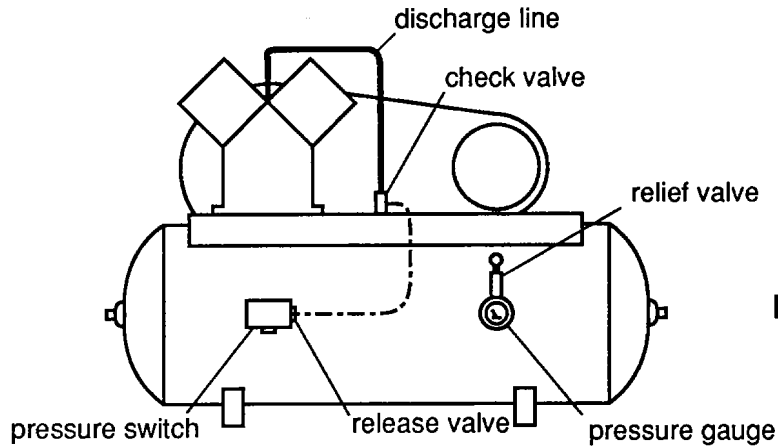
MANIFOLD GROUP 112257

Item Number	Qty.	Part Number	Description
† 1	1	110919-024	tube fitting, 90° male elbow, 3/4 tube x 3/4 npt
2	2ft	110515-075	copper tube, 3/4 OD
3	1	23271	tube fitting, straight 3/4 tube x 3/4 npt
4	1	122082	pipe tee, 1 npt x 3/4 npt x 3/4 npt
† 5	1	124689-001	pipe nipple, 3/4 npt x close
6	1	22238	pipe elbow, 45°, 1 npt
7	1	6101	pipe nipple, 1 npt x close

† Install with pipe sealant.



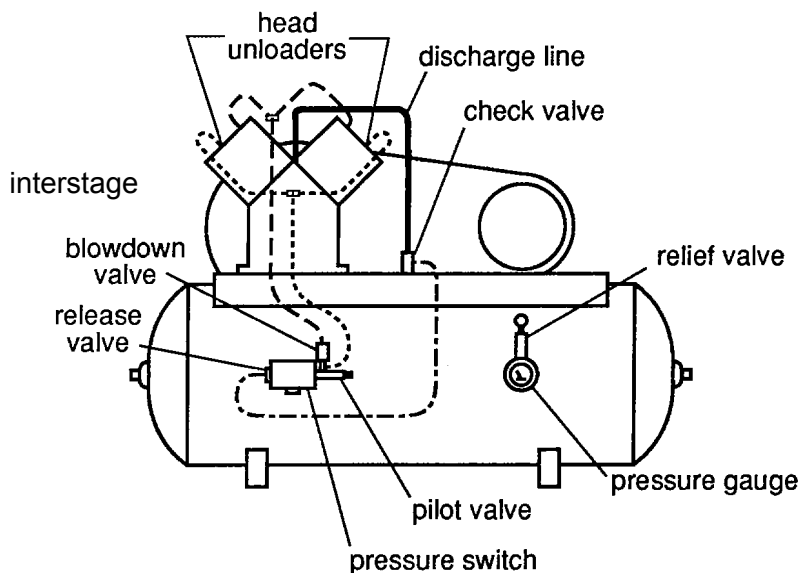
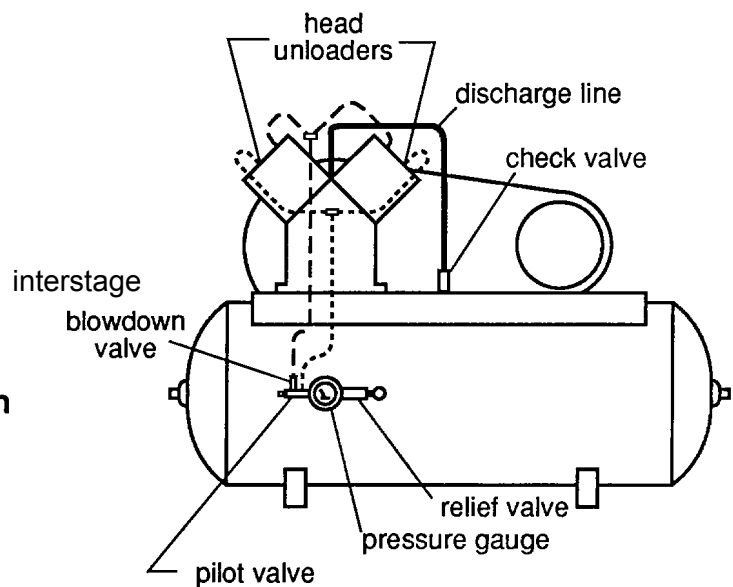
CONTROL PIPING SCHEMATICS



Control Piping For Automatic Start/Stop Operation

(with loadless starting)

Control Piping For Continuous Run Operation

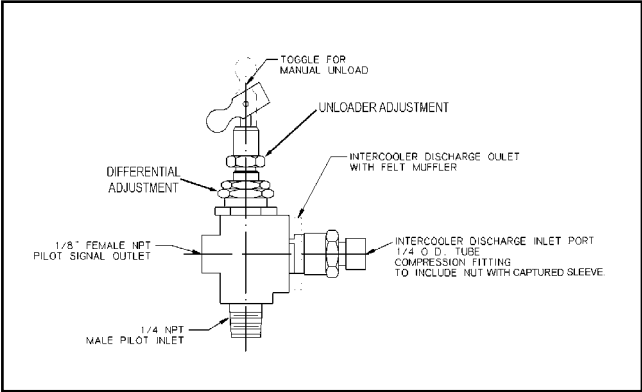


Control Piping For Dual Control Operation

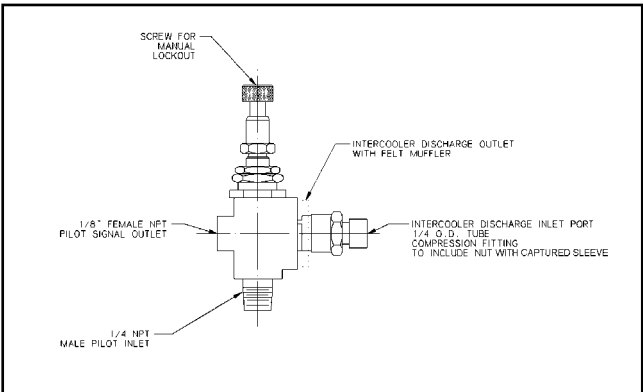
Pilot valve is open (stem screwed out) for Continuous Run operation

Pilot valve is closed (stem screwed in) for automatic Start/Stop operation (with loadless starting)

PILOT VALVES



**113321 series pilot valve
(continuous run operation)**



**113320 series pilot valve
(dual control operation)**

Available 113321 Series Pilot Valves	
Pilot Valve	Pressure Setting
113321-090	80-90
113321-100	90-100
113321-110	100-110
113321-125	110-125
113321-140	130-140
113321-150	135-150
113321-165	150-165

Available 113320 Series Pilot Valves	
Pilot Valve	Pressure Setting
113320-095	75-95
113320-115	100-115
113320-140	125-140
113320-165	150-165

WARNING !

Not all pilots are for use with all compressor systems. Make sure that the pilot you order is set within the safe operating limits of your compressor. Failure to heed this warning could result in an explosion.

Pilot Valve Repair Kit 113320K	
Can be used to repair 113320 & 113321 series pilot valves	
Qty.	Part Description
1	ball
1	"o"ring
1	piston
1	diaphragm
1	pilot spring
1	piston spring
1	toggle lever
1	rivet
1	muffler
1	retaining ring

Differential Setting Chart		
Applies to 113320 & 113321 series pilot valves		
Unload (PSI)	Min. Dif. (PSI)	Max. Dif. (PSI)
40	2	5
60	3	10
100	4	20
150	5	30
175	5	45

SUCTION VALVE UNLOADER ASSEMBLIES

Description

The Quincy suction valve unloader assembly consists of unloading assemblies on the suction valves, having a plunger to contact the suction valve reed and an unloader pilot valve (113320 or 113321 series) to automatically regulate the passing of air tank pressure to the unloading arrangement.

Continuous Run Operation

Suction valve unloader assemblies are recommended for use on Quincy compressors where the compressor is to run continuously and a constant pressure is to be maintained. The purpose is to automatically unseat the suction valve of the compressor when the air supply is greater than the demand.

Unloading occurs when air tank pressure is sufficient to overcome pilot valve spring pressure. The check ball is then unseated, allowing air tank pressure to pass to the unloader assemblies. The compressor will run unloaded until the air tank pressure drops to a predetermined level. At this time, the action of the ball is reversed, shutting off air tank pressure to the unloader assemblies and venting the unloader to atmosphere. This allows the compressor to load. The drive, either electric motor or engine, runs continuously and must be started and stopped manually. 113321 series pilot valves feature a toggle lever which can be flipped to provide manual unloading.

Dual Control Operation

Dual control operation is designed to provide a choice between "start/stop" or "continuous run" operation. The 113320 series pilot valve can be set for "start/stop" operation by turning the knurled knob at the end of the pilot valve (*refer to illustration for 113320 series pilot valve*) clockwise until it stops. Under these circumstances, a pressure switch is required to stop the motor. Failure to use a pressure switch, with the pilot valve locked out, will result in unsafe conditions.

WARNING !

A pressure switch must be incorporated whenever 113320 series pilot valve is employed as part of the control system.

The compressor will operate in the continuous run mode if the knurled knob is turned counterclockwise until it stops.

Interstage Blowdown Valve

113320 & 113321 series pilot valves feature an interstage blowdown valve which bleeds interstage pressure back to atmosphere when the compressor is running unloaded. This reduces the unloaded horsepower.

Installation

The pilot valve is mounted directly into the air tank. Compressors in the field, not equipped with these controls, can be converted. Consult your local Quincy distributor for assistance with conversion procedures.

Service

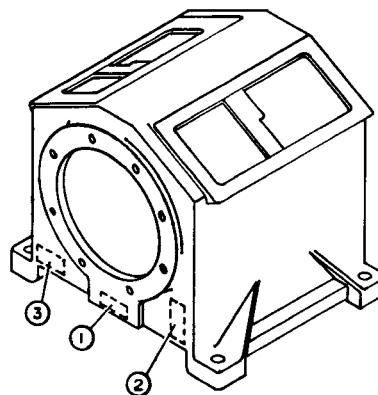
If a change in pilot valve operation is detected, remove the pilot valve from the air tank and check the screen in the inlet of the pilot valve for obstructions. Clean the screen if necessary.

Adjustment

The unloading pressure is adjustable and is regulated by turning the unload adjustment hex nut (*refer to pilot valve illustrations*). Turn the hex nut clockwise to increase and counterclockwise to decrease the unloading pressure.

The differential (difference between unloading and loading pressure) is set by turning the differential adjustment hex nut (*refer to pilot valve illustrations*). Increase the differential pressure by turning the hex nut clockwise - decrease by turning counterclockwise. Make all adjustments in small increments. Tighten the locknuts after adjustment.

DECALS



Decals			
Item #	Qty.	Part Number	Description
1	1	110831	serial number & nameplate
2	1	127889-A	decal, CAUTION!, MANUAL
3	1	127889-B	decal, DANGER!, "Air from this...."

TYPICAL UNIT REPAIR PARTS LIST

The parts listed here are for standard QP-15 units and may or may not be applicable to specially built units. Check with your local authorized Quincy distributor for parts that can be used for custom built units. Make sure the components you order are rated within the safe operating limits of your system. If you are doubtful about which components to order, contact your local Quincy distributor.

(QP-15 simplex - horizontal tank - electric motor)

Qty	Part Number	Part Number	Part Number	Description
	80 gal.	120 gal.	200 gal.	
1	113269P200	113272P200	113273P200	tank
1	113277	n/a	<i>113282-001</i>	top plate
1	2713	111136-050	111136-050	tank drain valve
1	111136-100	111136-100	111136-100	service valve
1	110514-300	110514-300	110514-300	pressure gauge
1	110512-005	110512-005	110512-005	pressure switch (standard)
1	110513-200	110513-200	110513-200	pressure relief valve, 200 PSI (in tank)
1	2961-215	2961-215	2961-215	pressure relief valve, 215 PSI (in discharge line)
1	114800-100	114800-100	114800-100	check valve
1	114559-003	114559-003	114559-003	discharge tube
2	111265-100	111265-100	111265-100	ferrule/sleeve
	10 h.p.	15 h.p.		
2	<i>110258B094</i>	<i>110258B097</i>		drive belt
1	<i>8458</i>	<i>116378</i>		motor pulley
1	<i>5380</i>	<i>8936</i>		bushing
1	<i>112432K003</i>	<i>112432K003</i>		belt guard assembly
	200v, 3Ø	230/460v, 3Ø		
1	<i>40656</i>	<i>124517-027</i>		10 h.p. motor (ODP)
1	<i>40657</i>	<i>127466L055</i>		15 h.p. motor (ODP)

(QP-15 duplex - horizontal tank - electric motor)

Qty	Part Number	Part Number	Part Number	Description
	200 gal.	240 gal.		
1	113468P200	113470P200		tank
2	<i>113282-001</i>	<i>113282-001</i>		top plate
1	111136-050	111136-050		tank drain valve
1	111136-100	111136-100		service valve
1	110514-300	110514-300		pressure gauge
1	110512-005	110512-005		pressure switch, 135-175 PSI
1	110512-001	110512-001		pressure switch, 120-150 PSI
1	110513-200	110513-200		pressure relief valve, 200 PSI (in tank)
2	2961-215	2961-215		pressure relief valve, 215 PSI (in discharge line)
2	114800-100	114800-100		check valve
2	114559-003	114559-003		discharge tube
4	111265-100	111265-100		ferrule/sleeve
	10 h.p.	15 h.p.		
4	<i>110258B094</i>	<i>110258B098</i>		drive belt
2	<i>8458</i>	<i>116378</i>		motor pulley
2	<i>5380</i>	<i>8936</i>		bushing
2	<i>112432K003</i>	<i>112432K003</i>		belt guard assembly
	200v, 3Ø	230/460v, 3Ø		
2	<i>40656</i>	<i>124517-027</i>		10 h.p. motor (ODP)
2	<i>40657</i>	<i>127466L055</i>		15 h.p. motor (ODP)

Part numbers shown in *italics* apply to tank mounted units and base mounted units.

QUINCY COMPRESSOR

STANDARD TERMS AND CONDITIONS

LEGAL EFFECT: Except as expressly otherwise agreed to in writing by an authorized representative of Seller, the following terms and conditions shall apply to and form a part of this order and any additional and/or different terms of Buyer's purchase order or other form of acceptance are rejected in advance and shall not become a part of this order.

The rights of Buyer hereunder shall be neither assignable nor transferable except with the written consent of Seller.

This order may not be canceled or altered except with the written consent of Seller and upon terms which will indemnify Seller against all loss occasioned thereby. All additional costs incurred by Seller due to changes in design or specifications, modification of this order or revision of product must be paid for by Buyer.

In addition to the rights and remedies conferred upon Seller by this order, Seller shall have all rights and remedies conferred at law and in equity and shall not be required to proceed with the performance of this order if Buyer is in default in the performance of such order or of any other contract or order with seller.

TERMS OF PAYMENT: Unless otherwise specified in the order acknowledgment, the terms of payment shall be 1% 15, net forty-five (45) days after shipment. These terms shall apply to partial as well as complete shipments. If any proceeding be initiated by or against Buyer under any bankruptcy or insolvency law, or in the judgment of Seller the financial condition of Buyer, at the time the equipment is ready for shipment, does not justify the terms of payment specified, Seller reserves the right to require full payment in cash prior to making shipment. If such payment is not received within fifteen (15) days after notification of readiness for shipment, Seller may cancel the order as to any unshipped item and require payment of its reasonable cancellation charges.

If Buyer delays shipment, payments based on date of shipment shall become due as of the date when ready for shipment. If Buyer delays completion of manufacture, Seller may elect to require payment according to percentage of completion. Equipment held for Buyer shall be at Buyer's risk and storage charges may be applied at the discretion of Seller.

Accounts past due shall bear interest at the highest rate lawful to contract for but if there is no limit set by law, such interest shall be eighteen percent (18%). Buyer shall pay all cost and expenses, including reasonable attorney's fees, incurred in collecting the same, and no claim, except claims within Seller's warranty of material or workmanship, as stated below, will be recognized unless delivered in writing to Seller within thirty (30) days after date of shipment.

TAXES: All prices exclude present and future sales, use, occupation, license, excise, and other taxes in respect of manufacture, sales or delivery, all of which shall be paid by Buyer unless included in the purchase price at the proper rate or a proper exemption certificate is furnished.

ACCEPTANCE: All offers to purchase, quotations and contracts of sales are subject to final acceptance by an authorized representative at Seller's plant.

DELIVERY: Except as otherwise specified in this quotation, delivery will be F. O. B. point of shipment. In the absence of exact shipping instruction, Seller will use its discretion regarding best means of insured shipment. No liability will be accepted by Seller for so doing. All transportation charges are at Buyer's expense. Time of delivery is an estimate only and is based upon the receipt of all information and necessary approvals. The shipping schedule shall not be construed to limit seller in making commitments for materials or in fabricating articles under this order in accordance with Seller's normal and reasonable production schedules.

Seller shall in no event be liable for delays caused by fires, acts of God, strikes, labor difficulties, acts of governmental or military authorities, delays in transportation or procuring materials, or causes of any kind beyond Seller's control. No provision for liquidated damages for any cause shall apply under this order. Buyer shall accept delivery within thirty (30) days after receipt of notification of readiness for shipment. Claims for shortages will be deemed to have been waived if not made in writing with ten (10) days after the receipt of the material in respect of which any such shortage is claimed. Seller is not responsible for loss or damage in transit after having received "In Good Order" receipt from the carrier. All claims for loss or damage in transit should be made to the carrier.

TITLE & LIEN RIGHTS: The equipment shall remain personal property, regardless of how affixed to any realty or structure. Until the price (including any notes given therefore) of the equipment has been fully paid in cash, Seller shall, in the event of Buyer's default, have the right to repossess such equipment.

PATENT INFRINGEMENT: If properly notified and given an opportunity to do so with friendly assistance, Seller will defend Buyer and the ultimate user of the equipment from any actual or alleged infringement of any published United States patent by the equipment or any part thereof furnished pursuant hereto (other than parts of special design, construction, or manufacture specified by and originating with Buyer), and will pay all damages and costs awarded by competent court in any suit thus defended or of which it may have had notice and opportunity to defend as aforesaid.

STANDARD WARRANTY: Seller warrants that products of its own manufacture will be free from defects in workmanship and materials under normal use and service for the period specified in the product instruction manual. Warranty for service parts will be Ninety (90) days from date of factory shipment. Electric Motors, gasoline and diesel engines, electrical apparatus and all other accessories, components and parts not manufactured by Seller are warranted only to the extent of the original manufacturer's warranty.

Notice of the alleged defect must be given to the Seller, in writing with all identifying details including serial number, type of equipment and date of purchase within thirty (30) days of the discovery of the same during the warranty period.

Seller's sole obligation on this warranty shall be, at its option, to repair or replace or refund the purchase price of any product or part thereof which proves to be defective. If requested by Seller, such product or part thereof must be promptly returned to seller, freight prepaid, for inspection.

Seller warrants repaired or replaced parts of its own manufacture against defects in materials and workmanship under normal use and service for ninety (90) days or for the remainder of the warranty on the product being repaired.

This warranty shall not apply and Seller shall not be responsible or liable for:

- (a) Consequential, collateral or special losses or damages;
- (b) Equipment conditions caused by fair wear and tear, abnormal conditions of use, accident, neglect or misuse of equipment, improper storage or damage resulting during shipping;
- (c) Deviation from operating instructions, specifications or other special terms of sale;
- (d) Labor charges, loss or damage resulting from improper operation, maintenance or repairs made by person(s) other than Seller or Seller's authorized service station.

In no event shall Seller be liable for any claims whether arising from breach of contract or warranty or claims of negligence or negligent manufacture in excess of the purchase price.

THIS WARRANTY IS THE SOLE WARRANTY OF SELLERS AND ANY OTHER WARRANTIES, WHETHER EXPRESS OR IMPLIED IN LAW OR IMPLIED IN FACT, INCLUDING ANY WARRANTIES OF MERCHANTABILITY AND FITNESS FOR PARTICULAR USE ARE HEREBY SPECIFICALLY EXCLUDED.

LIABILITY LIMITATIONS: Under no circumstances shall the Seller have any liability for liquidated damages or for collateral, consequential or special damages or for loss of profits, or for actual losses or for loss of production or progress of construction, whether resulting from delays in delivery or performance, breach of warranty, negligent manufacture or otherwise.

ENVIRONMENTAL AND OSHA REQUIREMENTS: At the time of shipment of the equipment from the factory, Quincy Compressor / Ortman Fluid Power will comply with the various Federal, State and local laws and regulations concerning occupational health and safety and pollution. However, in the installation and operation of the equipment and other matters over which the seller has no control, the Seller assumes no responsibility for compliance with those laws and regulations, whether by the way of indemnity, warranty or otherwise.

June 30, 2003



Reciprocating / Systems: 217.222.7700
E-mail: info@quincycompressor.com
Website: quincycompressor.com

