

**400-1000
CFM**



**PREMIUM INDUSTRIAL
REFRIGERATED AIR DRYERS**

Since 1977

Energy efficiency & MAXimum performance



DRYER SERIES

- The only energy efficient dryer system with aluminum refrigerated air inner cooler
- Non-corrosive inner and after cooler



- Rust Free, Stainless Steel Heat Exchanger for maximum heat transfer, maximum dryer life and less maintenance
- Trouble free operation Refrigerated air inlet inner cooler for high temp cooling

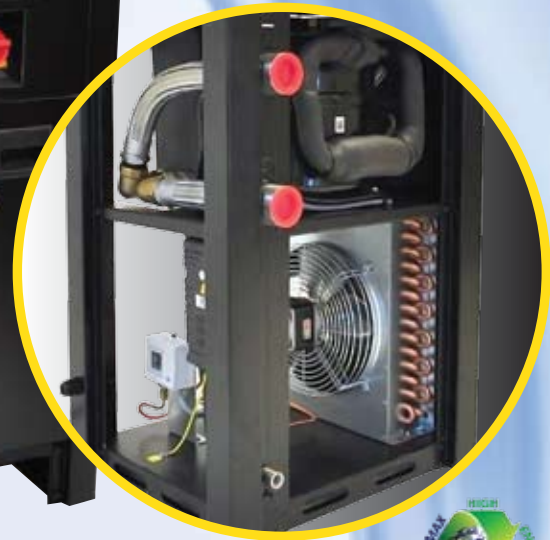


- Top mounted condensor & fan motor
- UL-CSA approved scroll compressor & electrical system for high efficiency and durability
- Environmentally friendly 134A refrigerant
- Adjustable Hot Bypass for complete dryer function in Low and High CFM flow preventing dryer freeze up

Contact:



www.EmaxCompressor.com
1000 Cass Drive
Clayton, Ohio 45315
Toll Free: 866-294-4153
Fax: 937-540-1157
sales@emaxcompressor.com



Features & Benefits

- High-Temperature cooling system for maximum performance
- Auto Drain System - Eliminates the need for daily maintenance
- Refrigerant Pressure Gauge - Clearly monitors performance of dew point temp
- Outlet Air Baffle Heater - Prevents condensation on outlet air piping
- Heavy Duty Steel Cabinet

Model Number	EDR2300460	EDR4600700	EDR4600850	EDR4601000*
SCFM	460	700	850	1000
Pipe Size	2"	3"	3"	3"
Voltage 60hz	230	460	460	460
Amperage	10	16	19	19
Phase	3	3	3	3
Dew Point (F°)	37-50	37-50	37-50	37-50
Max Working PSI	230	230	230	230
Max Inlet Temp (F°)	150	150	150	150
Refrigerant Type	134A	134A	134A	134A
Refrigerant Amt. (oz.)	106	150	176	352
Max Ambient Temp	120	120	120	120
Dimensions: LxWxH	27" x 31" x 55"	35" x 49" x 60"	35" x 48" x 60"	32" x 48" x 74"
Weight (lbs.)	507	859	941	1122

5YR - Limited Warranty on heat exchanger
 2YR - Limited Warranty on all other parts

** 250 & 400 CFM available in 460 Volt



PIXDRYER02 04/2014