

4

3

2

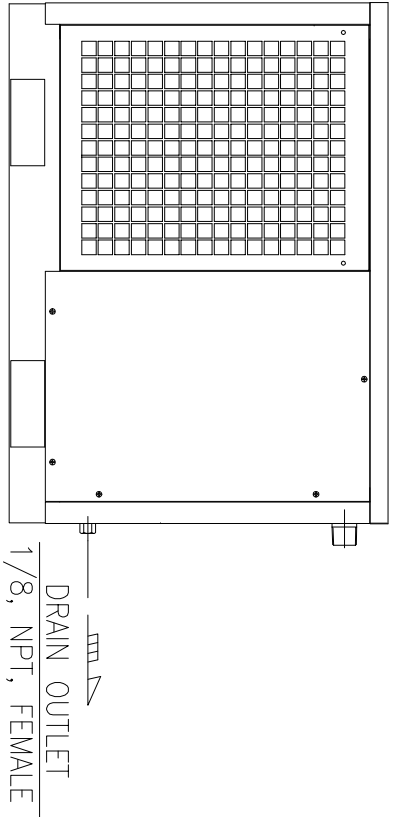
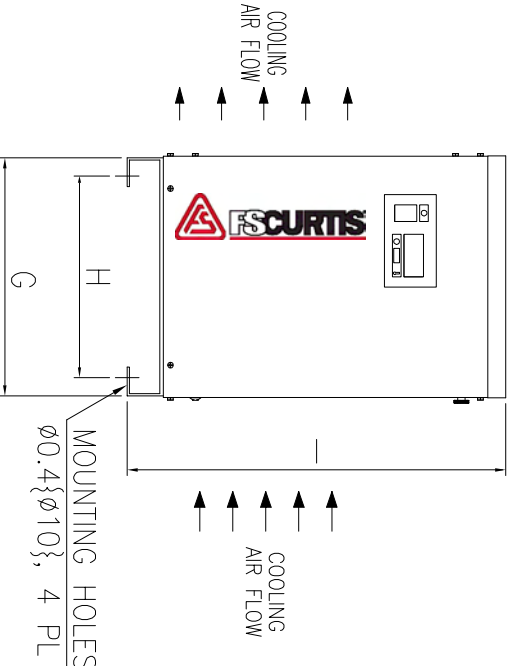
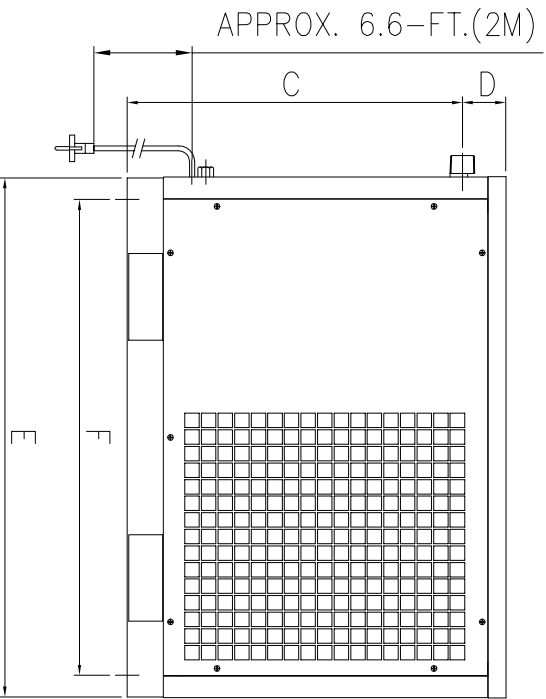
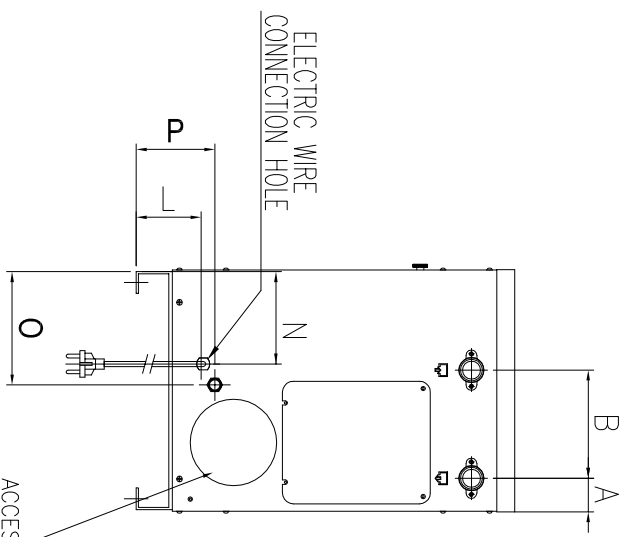
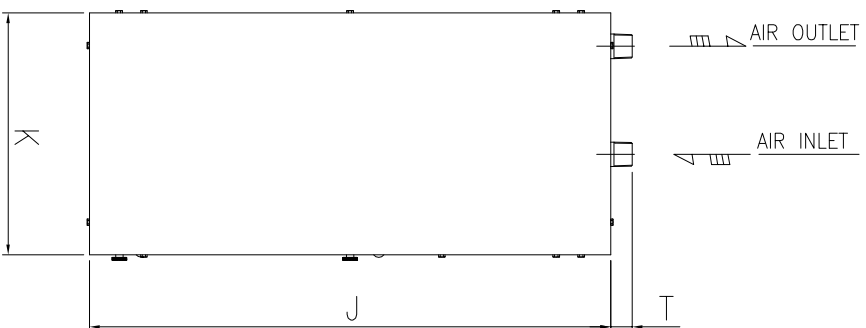
1

NOTE : PRIMARY DIMENSIONS ARE INCHES AND DIMENSIONS IN BRACES ARE METRIC

MODEL	DIMENSION															INLET/OUTLET <NPT, MALE>	INLET AIR FLOW <SCFM>	NET WEIGHT <LBS>	SHIPPING WEIGHT <LBS>	
	A	B	C	D	E	F	G	H	I	J	K	L	N	T	O					P
RNP100	1.8 {46.5}	5.9 {150}	18.3 {465}	2.36 {60}	28.3 {720}	26 {660}	13 {330}	11 {280}	20.6 {525}	28.8 {733}	13.2 {336}	3.54 {90}	6.5 {134}	1.18 {30}	6.2 {157}	4.3 {109}	<NPT, MALE>	<SCFM>	<LBS>	<LBS>
RNP125	1.8 {46.5}	5.9 {150}	18.3 {465}	2.36 {60}	28.3 {720}	26 {660}	13 {330}	11 {280}	20.6 {525}	28.8 {733}	13.2 {336}	3.54 {90}	6.5 {134}	1.18 {30}	6.2 {157}	4.3 {109}	<NPT, MALE>	<SCFM>	<LBS>	<LBS>
RNP150	1.8 {46.5}	5.9 {150}	18.3 {465}	2.36 {60}	28.3 {720}	26 {660}	13 {330}	11 {280}	20.6 {525}	28.8 {733}	13.2 {336}	3.54 {90}	6.5 {134}	1.18 {30}	6.2 {157}	4.3 {109}	<NPT, MALE>	<SCFM>	<LBS>	<LBS>

B

B



SERVICE :  
COMPRESSED AIR

OPERATING CONDITIONS :

RATED INLET AIR PRESSURE - 100 PSIG  
 MAXIMUM INLET AIR PRESSURE - 232 PSIG  
 MINIMUM INLET AIR PRESSURE - 10 PSIG  
 RATED INLET AIR TEMPERATURE - 100 °F  
 MAXIMUM INLET AIR TEMPERATURE - 120 °F  
 MINIMUM INLET AIR TEMPERATURE - 40 °F  
 RATED AMBIENT AIR TEMPERATURE - 100 °F  
 MAXIMUM AMBIENT AIR TEMPERATURE - 110 °F  
 MINIMUM AMBIENT AIR TEMPERATURE - 45 °F

SPECIFICATIONS :

ELECTRICALS - : 120V-1PH-60Hz  
 CONDENSER TYPE - AIR COOLED  
 REFRIGERANT - HFC-R134a  
 DRAIN TYPE - ELECTRONIC AUTO DRAIN VALVE WITH TIMER  
 EXPANSION DEVICE - CAPILLARY TUBE

A

A

4

3

2

1

REV.	DESCRIPTION	APPROVED	THIRD ANGLE PROJECTION	FILER NO.	SCALE: NONE	EST. WT.	SHEET 1 OF 1
				DRAWN BY: RJG DATE: 8/28/12	SIZE B	DWG. NO. GA03CUR-0025	REV.
				CHECKED BY: DDB DATE: 8/28/12	REFRIGERATED AIR DRYER GENERAL ARRANGEMENT RNP100-150		
				APPROVED BY: DDB DATE: 8/28/12			
				UNLESS OTHERWISE SPECIFIED DIMENSIONS ARE IN INCHES TOL. ON FRACTIONS: ± 1/16 TOL. ON DECIMALS: ± .030 (2 PLACE) TOL. ON DECIMALS: ± .015 (3 PLACE) TOL. ON ANGLES: ± .5			
	REVISION HISTORY (∇ INDICATES LATEST REVISION)						