

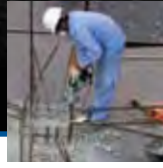


**Quincy**  
COMPRESSOR



# QP Series

*Performance You Demand.  
Reliability You Trust.™*



## Stronger Longer

Quincy Compressor's name is synonymous with quality thanks to the high manufacturing standards set back in 1920. Located in Quincy, Illinois and the first to introduce a fully pressure lubricated reciprocating compressor back in 1939, Quincy features its American-made QP series designed for tougher 175 PSI applications where traditional splash lubrication just won't measure up.

### Dependable & Reliable

When lubrication breaks down or there is metal-to-metal contact due to lack of lubrication it can cause destructive damage to an air compressor. If your compressor is down, so is your production.

- QP's fully pressure lubricated system allows smooth continuous operation.
- Pressurized oil flowing to all critical surfaces means less wear on the components
- Spin-on filter lengthens the life and improved reliability

### Lasting Performance

The QP heavy duty, cast-iron compressor has an oil pump for pressure lubrication to the crankshaft, bearings and connecting rods up to the wrist pins. Coupled with an attractive price, QP balances cost effectiveness with longer life to maximize your investment.

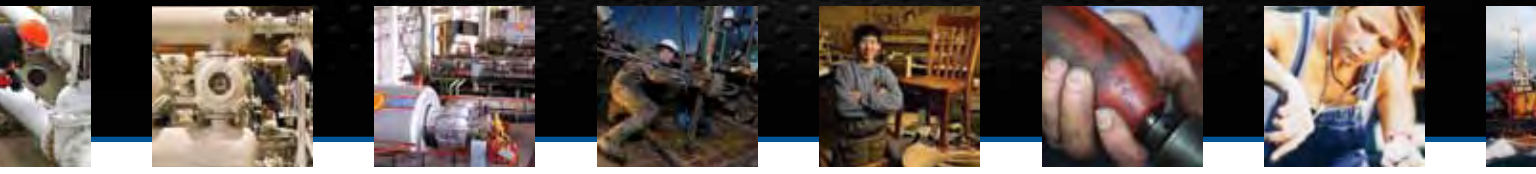
- Up to 15% longer life than a splash lubricated compressor.
- Heavy duty, cast-iron construction for rugged performance.

### Complete Satisfaction

QP Pro and Max packages include the industry-leading 7-year Sterling Blue Warranty, which covers seven years of protection on the compressor and two years on the package. Rely on Quincy's nationwide network of factory authorized distributors to stock genuine Quincy Compressor replacement parts and accessories to ensure proper maintenance of your compressor by trained service specialists.







# Tougher Inside and Out

Valve design provides the highest volumetric efficiency in the marketplace, using stainless-steel valves for maximum strength.

Aluminum head for strength and optimum heat dissipation.

ASME-code interstage pressure relief valves.

Graphite cylinder and head gaskets for positive sealing integrity.

Electronically balanced fan-type cast-iron flywheel delivers a powerful flow of air across the intercooler, cylinder and heads for effective unit cooling and smooth operation.

Cast-iron cylinders maintain rigid tolerances for high efficiency.

Computer Aided Design, balanced counter-weighted crankshaft assures smooth, trouble-free operation.

Oil pressure gauge.

Gerotor positive displacement oil pump.

High-efficiency fin and tube intercooler reduces interstage air temperature for maximum performance and increased valve life.

Spin on oil filter.

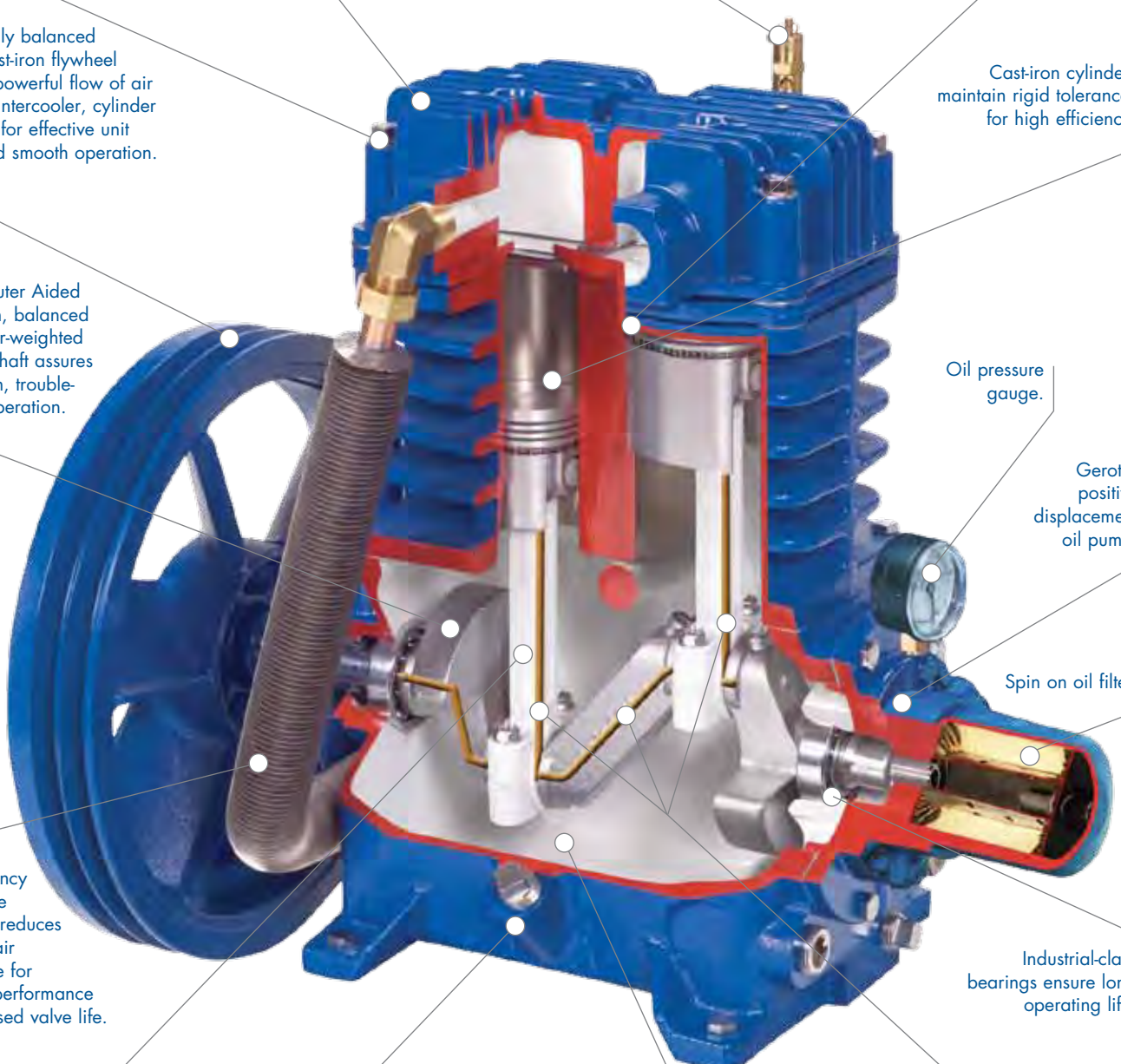
Industrial-class bearings ensure long operating life.

Two-piece connecting rods make service easier.

Extra capacity oil reservoir assures low oil temperature.

Cast-iron construction for dependability and smooth operation.

Rifle drilled crank shaft and connecting rods allow for full pressure lubrication.





# Premium Features

## QP Compressor Features

- Fully Pressure Lubricated Two-Stage
- Rifle Drilled Crankshaft, and Connecting Rods
- Gerotor Positive Displacement Oil Pump
- Oil Filter and Pressure Gauge
- Cast-iron Crankcase, Cylinders and Flywheel
- Stainless Steel Reed Valves with Valve Bumpers
- Ductile Iron, Double Throw Crankshaft
- Industrial Ball Bearings
- Two-Piece Aluminum Connecting Rods
- Fin and Tube Inter-Cooler
- Sight Level Oil Gauge on QP-5, QP-7.5 and QP-10
- Automotive Style Inlet Filter/Silencer
- One-Year Warranty Standard
- Sterling Blue Warranty on Pro and Max

## QP Unit Features

- Slow Speed Open Drip Proof Motors; 200, 230, 460 or 575 Volt
- 200 PSIG-Rated ASME/CRN-Coded Receiver
- ASME-Coded Relief Valves in the Interstage, Discharge Line and Receiver Tank
- Tank Pressure Gauge
- Service Valve
- Pressure Switch on Electric Models
- Loadless Auto-Stop/Start Controls
- 200, 230, 460, 575 Volt Full Voltage Starters†
- Single Source Duplex Control Panels on Duplex Units†
- Kohler, Honda and Yanmar Engines
- OSHA Compliant Totally Enclosed Belt Guard
- UL and CSA Compliant Electric Components
- Manual Ball Valve Tank Drain†
- Factory Fill of Quin-Cip Lubricant
- One-Year Warranty Standard
- Sterling Blue Warranty on Pro and Max

## QP Optional Configured Features

- Totally Enclosed Fan Cooled Motors
- NEMA 4
- California Code 462L OSHA Approval
- Air Cooled Aftercoolers\*
- Electronic Tank Drains\*
- Vibration Isolators on Horizontal Models\*
- Simplex Control Panel†
- Dual Power Source Duplex Control Panel
- Low Oil Pressure Switch†
- Dual Controls (Standard on 15 HP Pro and Standard 10-15 HP Max Units)
- Optional Tank Sizes
- Base Mounted Units

\* included on Max models

† included on Pro models



# Quincy QP Model Information



HP	Phase	Volt	Unit	Tank	Tank Size (Gal)	ACFM @ 175 psig	RPM	Pressure Lubricated Model	QP Pro Part Number	QP Max Part Number	Approx Ship Wt. (lbs.)	LxWxH (Inches)
			Configuration									
5	1	230	Simplex	Vertical	80	17.2	942	QP-5	351CS80VCB	351C80VCBM	680	37x24x74
				Horizontal								
			Duplex	Horizontal	80	17.2 (x2)	942	QP-5	351CC80DCA	351C80DCAM	920	69x24x46
5	3	230	Simplex	Vertical	80	17.2	942	QP-5	353DS80VCA23	353D80VCA23M	680	37x24x74
				Horizontal								
			Duplex	Horizontal	80	17.2 (x2)	942	QP-5	353DC80DCA23	353D80DCA23M	920	69x24x46
7.5	1	230	Simplex	Vertical	80	22.6	1026	QP-7.5	371CS80VCA	371C80VCAM	720	37x24x74
				Horizontal								
			Duplex	Horizontal	80	22.6 (x2)	1026	QP-7.5	371CC80DCA	371C80DCAM	1078	78x28x55
7.5	3	230	Simplex	Vertical	80	22.6	1026	QP-7.5	373DS80VCA23	373D80VCA23M	720	37x24x74
				Horizontal								
			Duplex	Horizontal	80	22.6 (x2)	1026	QP-7.5	373DC80DCA23	373D80DCA23M	1078	78x28x55
10	3	230	Simplex	Vertical	120	35	968	QP-10	3103DS12VCA23	3103D12VCA23M	1000	40x30x75
				Horizontal								
			Duplex	Horizontal	200	35 (x2)	968	QP-10	3103DC20DCA23	3103D20DCA23M	1660	106x30x64
15	3	230	Simplex	Horizontal	120	51	923	QP-15	3153DS12HCA23	3153D12HCB23M	995	78x28x55
			Duplex	Horizontal	200	51 (x2)	923	QP-15	3153DC20DCA23	3153D20DCA23M	1900	106x30x64

QP is available in four fully pressure lubricated two-stage models from 5 HP to 15 HP. The 230 volt single-phase and three phase Pro and Max part numbers are listed on the chart above. All Pro and Max part numbers are voltage specific. See your Quincy Compressor distributor for more information.

## Pro Package 5-15 HP

- ODP Slow Speed Motor
- Motor Overload Protection
- Ball Valve Tank Drain
- Automatic Start/Stop 5 to 10 HP
- Dual Control on 15 HP
- Sterling Blue 7-Year Warranty

## Max Package 5-15 HP

- ODP Slow Speed Motor
- Motor Overload Protection
- Electronic Tank Drain
- Automatic Start/Stop 5 to 7.5 HP
- Dual Control on 10-15 HP
- Low Oil Pressure Shutdown
- Air Cooled Aftercooler
- Isolator Pads on Horizontals
- Sterling Blue 7-Year Warranty

## Engine Driven

The fully pressure lubricated system of the Quincy QP is a perfect fit for service truck applications. QP engine driven models are available with a gasoline powered Honda or Kohler engine or a Yanmar diesel engine.



Fuel Type	HP	Engine Brand	Tank Configuration	Tank Size (Gal)	Pressure Lubricated Model	ACFM @ 175 psig	RPM	Part Number	LxWxH (Inches)	Approx. Ship Wt. (lbs)
Diesel	10	Yanmar	Horizontal	30	QP-7.5	22.0	990	D307Y30HCD	42x21x40	550
Gas	13	Honda	Horizontal	30	QP-7.5	23.6	1060	G313H30HCE	42x21x40	515
	14	Kohler						G314K30HCE		501





# Tough Tougher Toughest

Today, Quincy is the only manufacturer that gives you the best choice from the Tough QT to the Tougher QP and the Toughest reciprocating compressor the highly customizable QR.

Performance You Demand. Reliability You Trust.

- Tough QT splash lubricated 5 HP to 15 HP, 175 PSI maximum working pressure
- Tougher QP fully pressure lubricated 5 HP to 15 HP, 175 PSI maximum working pressure
- Toughest QR fully pressure lubricated 1 HP to 25 HP, up to 500 PSI maximum working pressure

## Compressed Air Best Practices

Authorized Distributor



©2012 Quincy Compressor. All rights reserved. Printed in U.S.A. (QP-007 01/12)