

QT Series Model QT-7.5

Parts Manual

This manual contains important safety information and must be carefully read in its entirety and understood prior to installation by all personnel who install, operate and/or maintain this product.

On-line product registration, parts ordering and warranty information is available at www.quincycompressor.com

Manual No. 2022207901

June 2018 Edition

TABLE OF CONTENTS

Overhaul Kit	1
Gasket Set	1
Recommended Spare Parts	1
Serial Number Identification	2
Ordering Replacement Parts	2
Quin-Cip Lubricant	2
Crankcase Lubricant Capacity	2
Crankshaft Groups	3
Crankcase Group	4
Connecting Rod & Piston Groups	5-6
Cylinder & Head Groups	7-8
Control Piping Schematics	9
Pilot Valves	10
Pilot Valve Repair Kit	10
Differential Setting Chart	12
Suction Valve Unloader Assemblies	11
Decals	11
Typical Unit Repair Parts List	12-14

INTRODUCTION

This manual provides information for the Model QT-7.5 reciprocating compressor, per Record of Change 202.

The Model QT-7.5 is an aircooled, two stage, two cylinder, splash lubricated compressor, with up to 175 PSI continuous pressure capability. It has a 4.5" low pressure bore and a 2.50" high pressure bore, with a 3" stroke. This compressor can be run at 500-1060 RPM.

Optional head unloaders are available.

CHANGES

since previous printing dated June 2018:

The part numbers within the manual have been updated to the current 10-digit part numbers and there are new valve plate gasket part numbers.

Overhaul Kit 2022157501			
Item #	Qty.	Part Number	Description
1		2022111301	piston ring set
1		2022111401	piston ring set
1		2022106800	gasket set
1		2024403751	valve plate assembly
1		2023400852	air filter element
1		2025024610	piston pin
1		2025024616	piston pin
1		2023402501	crankcase breather
1		2024408302	connecting rod assembly, LP
1		2024408306	connecting rod assembly, HP
2		2025027201	piston pin plug, .88 dia.
2		2025027202	piston pin plug, .62 dia.

Gasket Set 2022106800			
Item #	Qty.	Part Number	Description
1		2024703501	gasket, valve plate to head
1		2024704501	gasket, cylinder to valve plate
1		2024704300	gasket, crankcase to cylinder
1		2024703800	gasket, bearing carrier
1		2024719400	oil seal
6		2014706635	spring washer
6		2022203100	head bolts

Recommended Spare Parts			
Item #	Qty.	Part Number	Description
1		2023400852	air filter element, (fits 2023400802, 2023400823 and 2023400829 air filters)
1		2022106800	gasket set
1		2022128101	replacement valve assembly

SERIAL NUMBER IDENTIFICATION

The unit serial number identification tag is located on the air tank top plate. The basic compressor serial number decal is located on the side of the crankcase opposite the oil fill side. *Fill in the numbers from your compressor unit and basic compressor in the corresponding spaces provided here, and reference this page when ordering replacement parts.*

Unit Serial Number

Basic Serial Number

All replacement parts are to be ordered through an authorized Quincy distributor. Insist on genuine Quincy parts only! Failure to do so may void warranty.

ORDERING REPLACEMENT PARTS

Prompt service can be rendered on repair parts orders if the following information is given:

- Item 1)** the model number, record of change number, & serial number.
- Item 2)** the exact part number needed. (Do not order by item numbers.)
- Item 3)** the exact quantity needed.
- Item 4)** the preferred type of transportation.

CRANKCASE LUBRICANT CAPACITY

Model	Capacity
QT-7.5	1 qt. & 20 oz. (1.53 lit.)

QUIN-CIP LUBRICANT

Refer to the chart below to order Quin-Cip-D or Quin-Cip compressor lubricant from your local authorized Quincy distributor.

Quin-Cip-D Lubricant (synthetic)	
SAE 30 (ISO 100)	
Quart	2024601201
Quin-Cip Lubricant	
SAE 10W (ISO 32)	
Quart	2024600601
Case (12 Qts.)	2024600605
SAE 20 (ISO 68)	
Quart	2024600701
Case (12 Qts.)	2024600705
SAE 30 (ISO 100)	
Quart	2024600801
Case (12 Qts.)	2024600805

CAUTION !

Refer to the QT/QTS Series instruction manual for vital lubrication information.

CAUTION !

Follow all safety precautions outlined in the QT/QTS Series instruction manual.

WARNING !

Do not operate this compressor without a totally enclosed belt guard or any other required safety equipment.

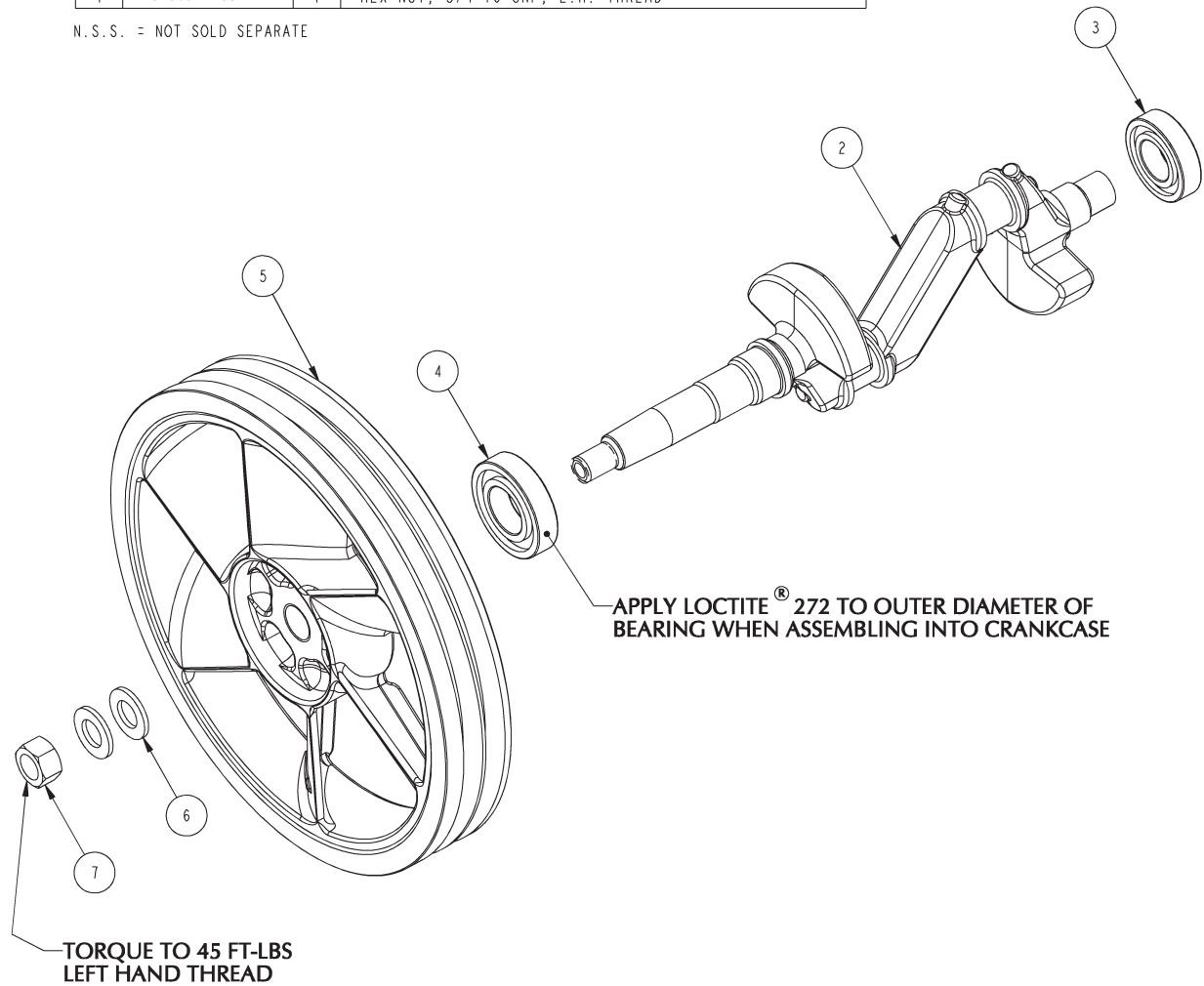
DANGER !

Air used for breathing or food processing must meet OSHA 1910.134 or FDA 21 CFR 178.3570 regulations. Failure to do so may cause severe injury or death.

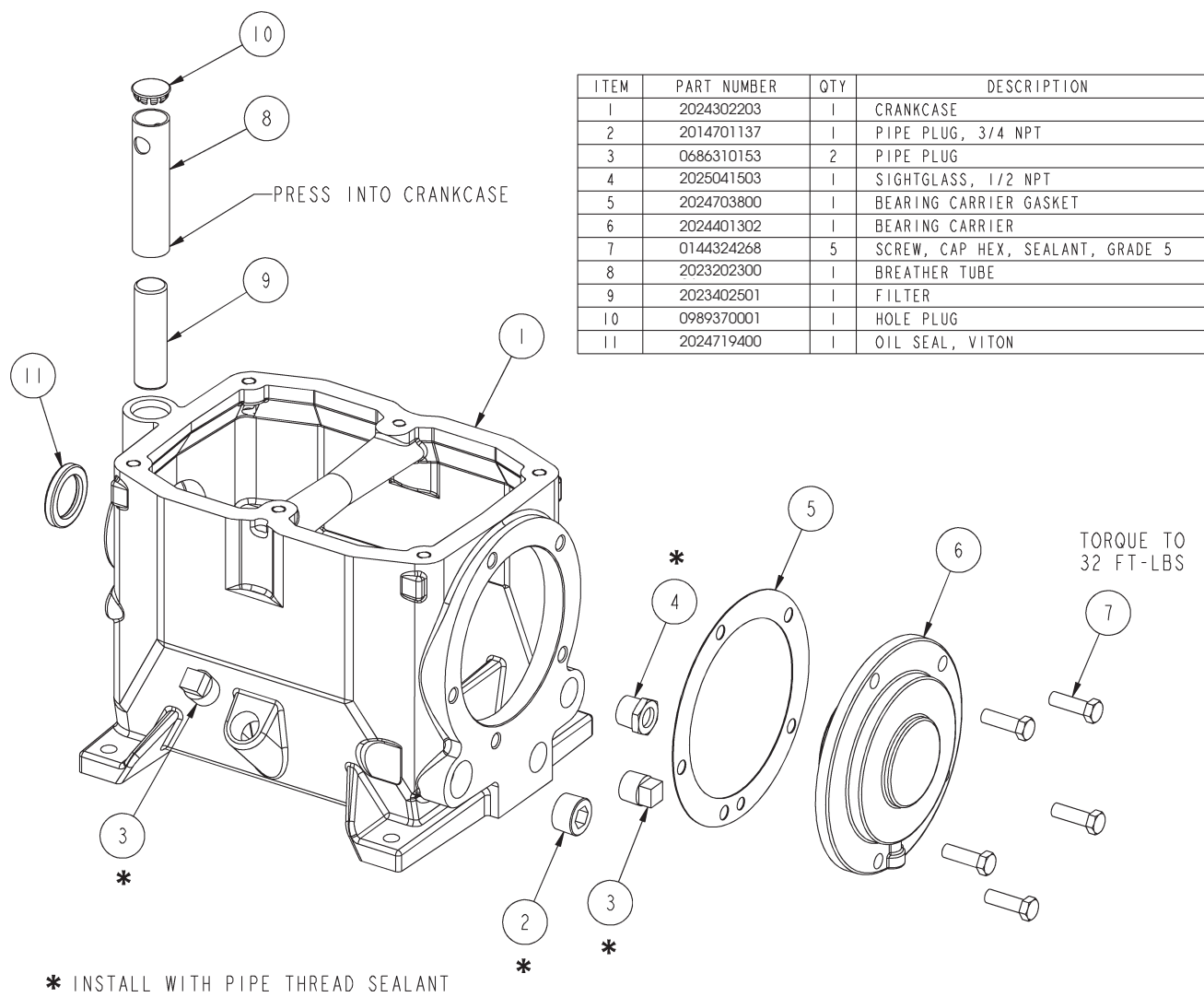
CRANKSHAFT GROUP 2021060905

ITEM	PART NUMBER	QTY	DESCRIPTION
1	2024304553	1	CRANKSHAFT ASSEMBLY (INCLUDES SHAFT AND BEARINGS)
2	2024304503	1	CRANKSHAFT (N.S.S. - ORDER CRANKSHAFT ASSEMBLY)
3	2024203700	1	BALL BEARING
4	2024204400	1	BALL BEARING
5	2024313602	1	SHEAVE, 14.15 O.D., 2 GROOVE, B SECT. CCW
6	0300012973	2	FLAT WASHER, 3/4
7	0268321100	1	HEX NUT, 3/4-16 UNF, L.H. THREAD

N.S.S. = NOT SOLD SEPARATE

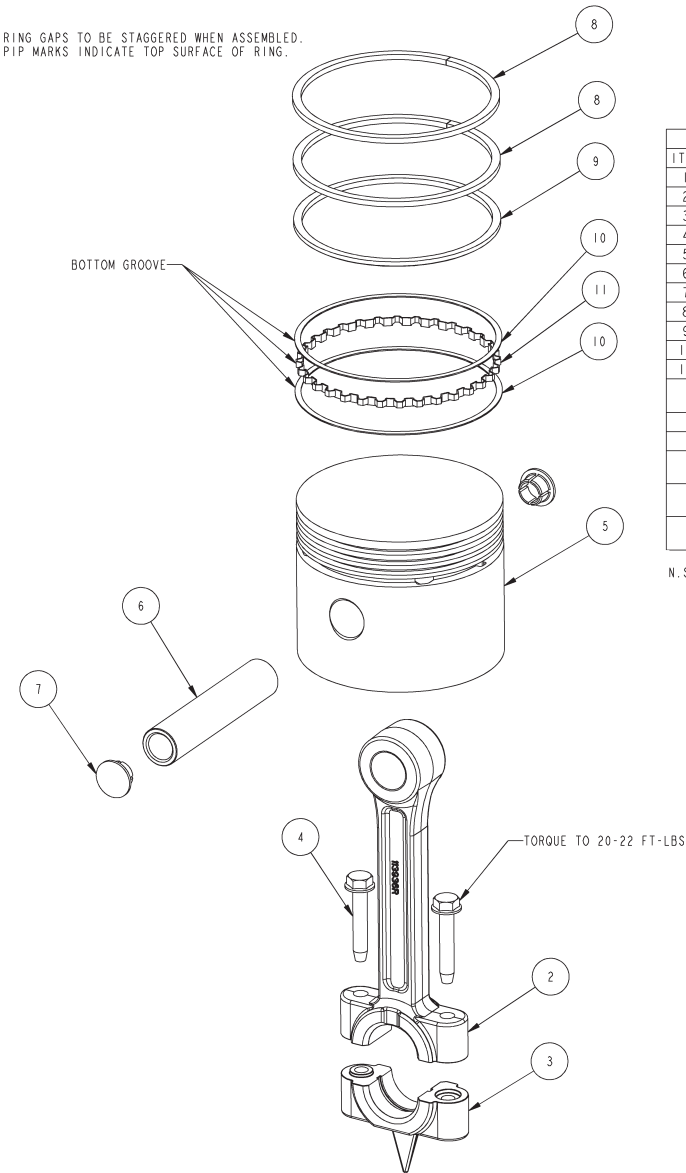


CRANKCASE GROUP 2021060803



CONNECTING ROD & PISTON GROUP 2021065901

(low pressure)

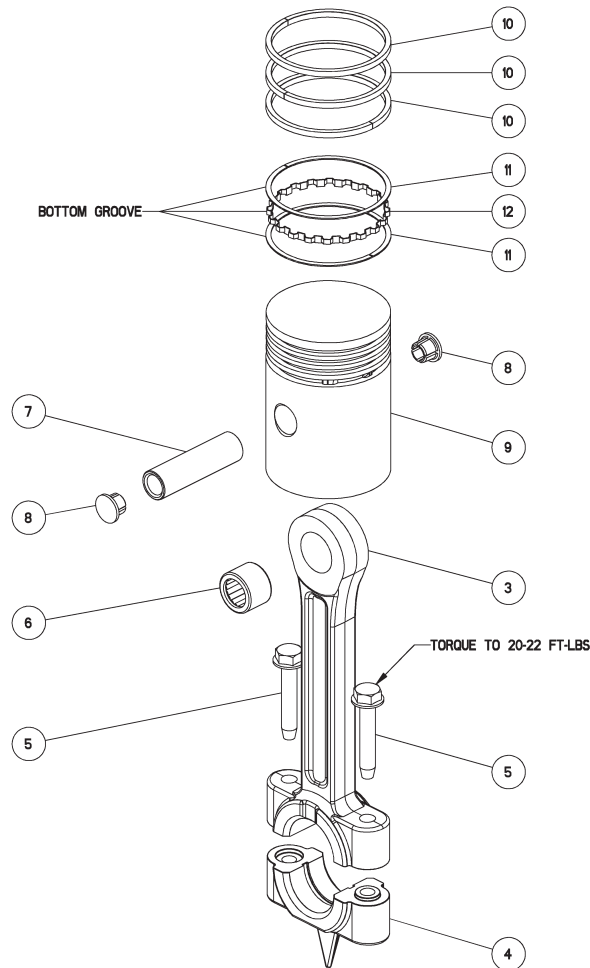


LOW PRESSURE PISTON AND ROD GROUP 2021065901 BILL OF MATERIALS			
ITEM	PART NUMBER	QTY	DESCRIPTION
1	2024408302	1	CONNECTING ROD ASSEMBLY (INCLUDES ROD,CAP,SCREWS)
2	2024408300	1	CONNECTING ROD, N.S.S., ORDER ROD ASSEMBLY
3	2024408400	1	CONNECTING ROD CAP, N.S.S., ORDER ROD ASSEMBLY
4	0147310022	2	TAPTITE SCREW, 5/16-18 UNC X 1.75
5	2024405302	1	PISTON, LP
6	2025024616	1	PISTON PIN
7	2025027201	2	PISTON PIN PLUG
8	2025034800	2	RING, COMPRESSION, STANDARD
9	2025037400	1	PISTON RING
10	2025029600	2	OIL RING RAIL
11	2025043700	1	OIL RING EXPANDER
MAINTENANCE PARTS			
PART NUMBER	QTY	DESCRIPTION	
2022111301	1	PISTON RING SET, LP	
2021102501	1	PISTON ASSEMBLY, LP INCLUDES PISTON, RING SET, PISTON PIN AND PISTON PIN PLUGS	
2022128201	1	REPLACEMENT PISTON PIN ASSEMBLY, LP INCLUDES PISTON PIN AND PISTON PIN PLUGS	

N.S.S. = NOT SOLD SEPARATE

CONNECTING ROD & PISTON GROUP 2021066001
(high pressure)

RING GAPS TO BE STAGGERED WHEN ASSEMBLED.
PIP MARK INDICATES TOP SURFACE OF RING.



HIGH PRESSURE PISTON AND ROD GROUP 2021066001 BILL OF MATERIALS			
ITEM	PART NUMBER	QTY	DESCRIPTION
1	2024408356	1	CONNECTING ROD ASSEMBLY, WITH BEARING
2	2024408306	1	CONNECTING ROD ASSEMBLY (INCLUDES ROD,CAP,SCREWS)
3	2024408300	1	CONNECTING ROD, N.S.S., ORDER ROD ASSEMBLY
4	2024408400	1	CONNECTING ROD CAP, N.S.S., ORDER ROD ASSEMBLY
5	0147310022	2	TAPTITE SCREW, 5/16-18 UNC X 1.75
6	2024202300	1	NEEDLE BEARING
7	2025024610	1	PISTON PIN
8	2025027202	2	PISTON PIN PLUG
9	2024406501	1	PISTON, HP
10	2025034100	3	PISTON RING
11	2025029200	2	OIL RING RAIL
12	2025016800	1	OIL RING EXPANDER
MAINTENANCE PARTS			
PART NUMBER	QTY	DESCRIPTION	
2022111401	1	PISTON RING SET, HP	
2024406551	1	PISTON ASSEMBLY, HP INCLUDES PISTON, RING SET, PISTON PIN AND PISTON PIN PLUGS	
2022128202	1	REPLACEMENT PISTON PIN ASSEMBLY, HP INCLUDES PISTON PIN AND PISTON PIN PLUGS	

N.S.S. = NOT SOLD SEPARATE

CYLINDER & HEAD GROUP 2021061003

(less head unloaders)

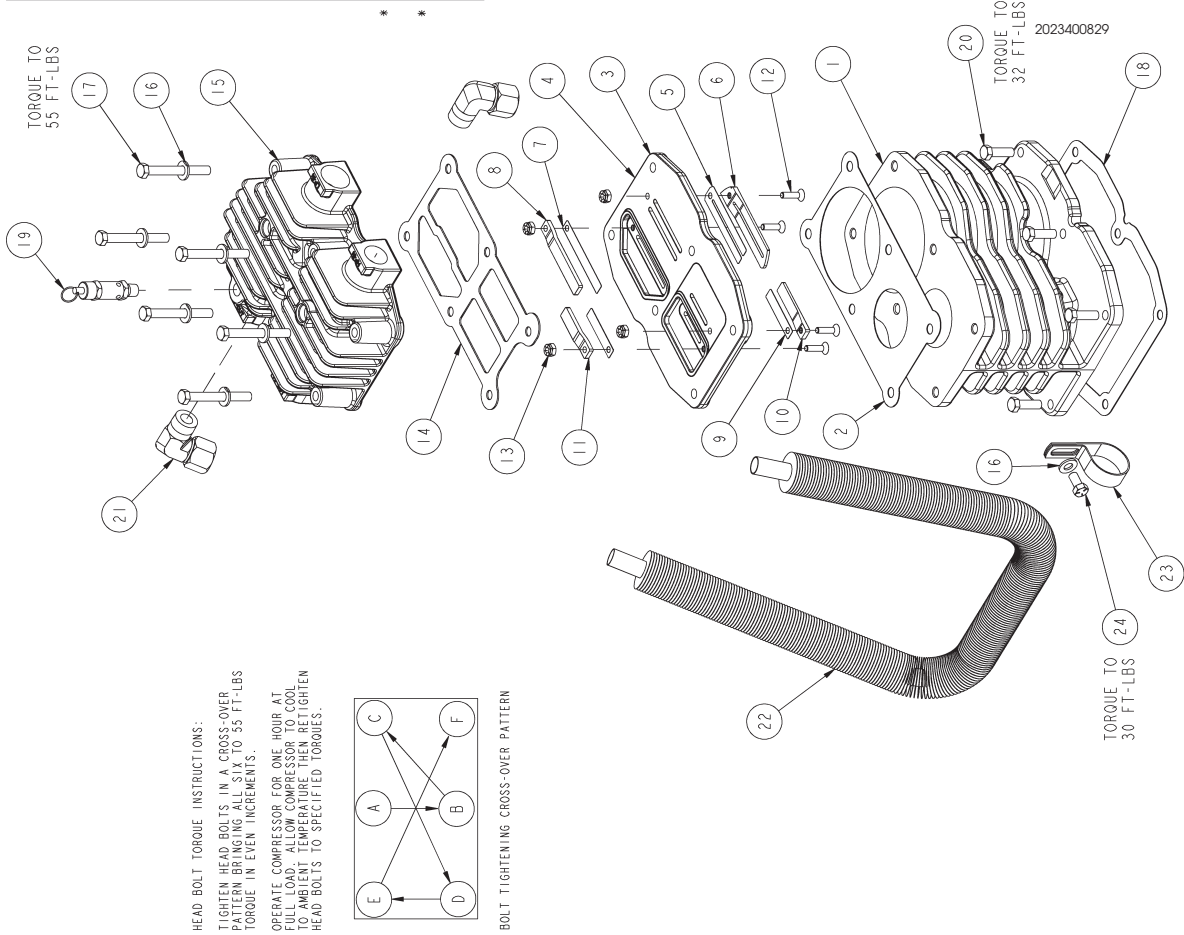
STANDARD HEAD AND CYLINDER GROUP 2021061003 BILL OF MATERIALS		
ITEM	PART NUMBER	QTY DESCRIPTION
1	2024306701	1 CYLINDER
2	2024704501	1 GASKET, VALVE PLATE TO CYLINDER
3	2024403751	1 VALVE PLATE ASSEMBLY
4	2024403741	1 VALVE PLATE (N.S.S., ORDER VALVE PLATE ASSEMBLY)
5	2023914900	1 REED VALVE (N.S.S., ORDER V.P. ASSEMBLY)
6	2023904101	1 BUMPER (N.S.S., ORDER V.P. ASSEMBLY)
7	2023914801	1 REED VALVE (N.S.S., ORDER V.P. ASSEMBLY)
8	2023904501	1 BUMPER (N.S.S., ORDER V.P. ASSEMBLY)
9	2023914802	2 REED VALVE (N.S.S., ORDER V.P. ASSEMBLY)
10	2023904300	1 BUMPER (N.S.S., ORDER V.P. ASSEMBLY)
11	2023904902	1 BUMPER (N.S.S., ORDER V.P. ASSEMBLY)
12	0216220813	4 FLATHEAD SCR., 1/4-20UNC X 1.00, GR 8
13	0281220405	4 HEX NUT, 1/4-20 UNC
14	2024703501	1 GASKET, VALVE PLATE TO HEAD
15	2024407502	1 CYLINDER HEAD, PLAIN
16	2014706635	7 SPRING WASHER
17	5530604400	6 HEX. SCREW, 3/8-16 UNC X 3.25, GRADE 9
18	2024704300	1 GASKET, CYLINDER TO CRANKCASE
19	2023918108	1 PRESSURE RELIEF VALVE
20	0144324268	6 SCREW, CAP HEX., SEALANT, GRADE 5
21	0681120075	2 TUBE FITTING, 90° ELBOW, 3/4TX3/AMP
22	2023501400	1 INTERCOOLER (N.S.S., ORDER REPLACEMENT KIT)
23	2025051500	1 INTERCOOLER CLAMP
24	0144324204	1 HEX SCREW, 3/8-16 UNC X .75, GRADE 5

*

*

MAINTENANCE PARTS	
PART NUMBER	QTY DESCRIPTION
2022128101	1 VALVE ASSEMBLY REPLACEMENT KIT INCLUDES ITEMS 2, 3, 14, 16, 17 AND INSTRUCTIONS
2023501480	1 INTERCOOLER REPLACEMENT KIT INCLUDES INTERCOOLER AND NUT/SLEEVE FITTINGS
2022157601	1 HEAD REPLACEMENT KIT INCLUDES REPLACEMENT VALVE ASSEMBLY AND AIR FILTER ELEMENT
2023400823	1 AIR FILTER / SILENCER
2023400829	1 AIR FILTER / SILENCER (FOR ENGINE DRIVEN MODELS)
2023400852	1 ELEMENT, AIR FILTER

N.S.S. = NOT SOLD SEPARATE
* INSTALL WITH TEFLON TAPE



Gasket Set 2022106800		
Item #	Qty.	Part Number Description
1	1	2024703501 gasket, valve plate to head
1	1	2024704501 gasket, cylinder to valve plate
1	1	2024704300 gasket, crankcase to cylinder
1	1	2024703800 gasket, bearing carrier
1	1	2024719400 oil seal
6	6	2014706635 spring washer
6	6	2022203100 head bolts

CYLINDER & HEAD GROUP 2021061004

(with head unloaders)

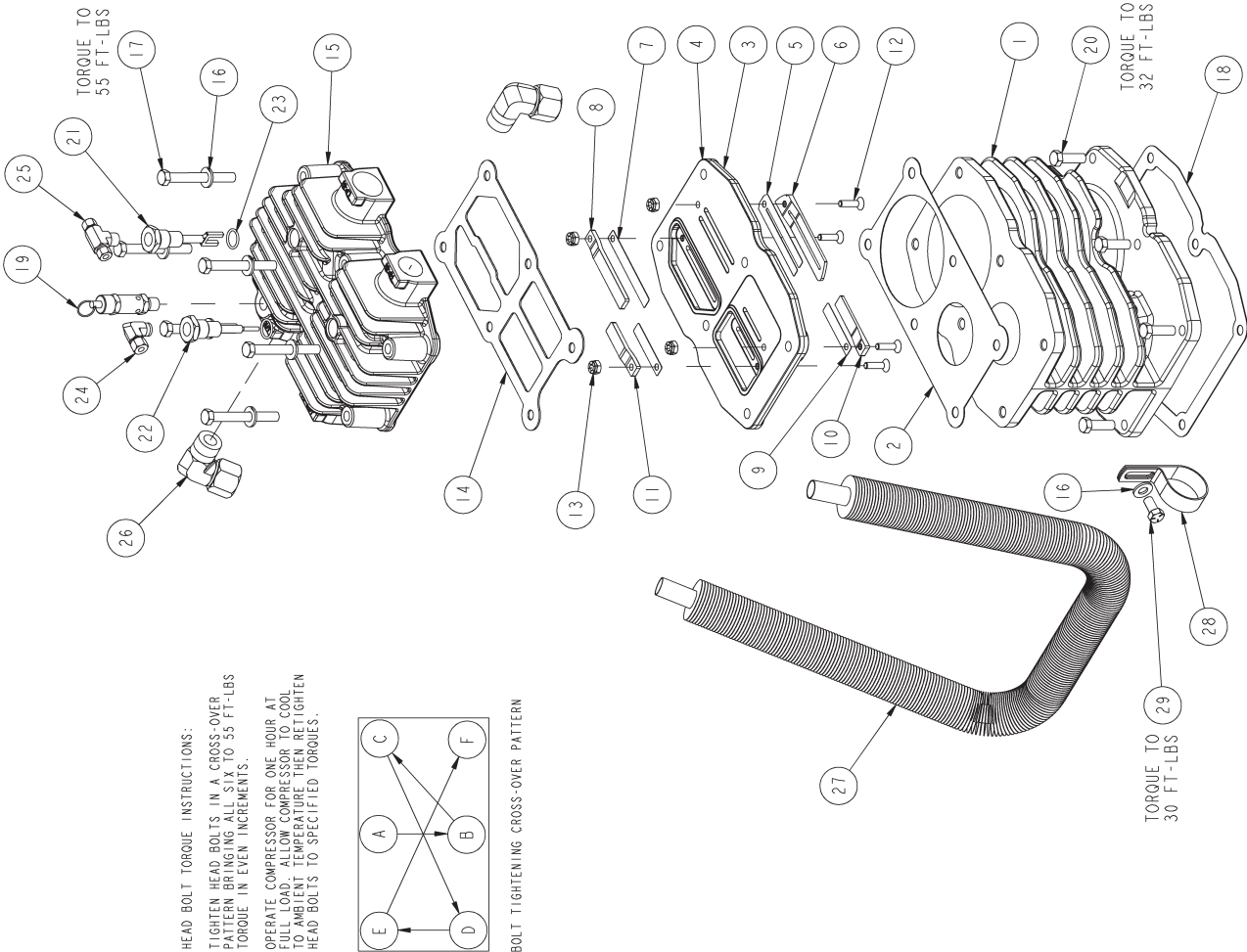
UNLOADER HEAD AND CYLINDER GROUP 2021061004 BILL OF M			
ITEM	PART NUMBER	QTY	DESCRIPTION
1	2024306701	1	CYLINDER
2	2024704501	1	GASKET, VALVE PLATE TO CYLINDER
3	2024403751	1	VALVE PLATE ASSEMBLY
4	2024403740	1	VALVE PLATE (N.S., ORDER VALVE PLA
5	2023914900	1	REED VALVE (N.S., ORDER V.P. ASSE
6	2023904101	1	BUMPER (N.S., ORDER V.P. ASSEMBLY
7	2023914801	1	REED VALVE (N.S., ORDER V.P. ASSE
8	2023904501	1	BUMPER (N.S., ORDER V.P. ASSEMBLY
9	2023914802	2	REED VALVE (N.S., ORDER V.P. ASSE
10	2023904300	1	BUMPER (N.S., ORDER V.P. ASSEMBLY
11	2023904502	1	BUMPER (N.S., ORDER V.P. ASSEMBLY
12	0216220813	4	FLATHEAD SCR. 1/4-20UNC X 1.00, GR
13	0281220405	4	HEX NUT, 1/4-20 UNC
14	2024703501	1	GASKET, VALVE PLATE TO HEAD
15	2024407501	1	CYLINDER HEAD, UNLOADER
16	2014706635	7	SPRING WASHER
17	5530604400	6	HEX. SCREW, 3/8-16 UNC X 3.25, GRADE
18	2024704500	1	GASKET, CYLINDER TO CRANKCASE
19	2023918108	1	PRESSURE RELIEF VALVE
20	0144324268	6	SCREW, CAP HEX, SEALANT, GRADE 5
21	2023908801	1	UNLOADER, INTAKE, LP
22	2023908802	1	UNLOADER, INTAKE, HP
23	0663211775	2	O-RING, SILICONE
24	0581120069	1	TUBE FITTING, 90° ELBOW, 1/4"x1/4"
25	2024904604	1	MALE BRANCH TEE 1/4" X 1/4"
26	0581120075	2	TUBE FITTING, 90° ELBOW, 3/4"x3/4"
27	2023501400	1	INTERCOOLER (N.S., ORDER REPLACEMEN
28	2025051500	1	INTERCOOLER CLAMP
29	2022128101	1	HEX SCREW, 3/8-16 UNC X .75, GRADE 5

MAINTENANCE PARTS	
PART NUMBER	DESCRIPTION
2022128101	VALVE ASSEMBLY REPLACEMENT KIT INCLUDES ITEMS 2, 3, 14, 16, 17 AND IN
2023501480	INTERCOOLER REPLACEMENT KIT INCLUDES INTERCOOLER AND NUT/SLEEVE FI
2022157601	HEAD REPLACEMENT KIT INCLUDES REPLACEMENT VALVE ASSEMBLY AN
2023400823	AIR FILTER / SILENCER
2023400829	AIR FILTER / SILENCER (FOR ENGINE DRIV
2023400852	ELEMENT, AIR FILTER

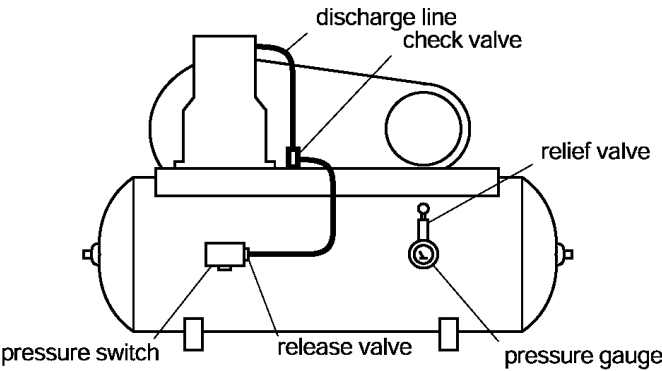
N.S. = NOT SOLD SEPARATE
* INSTALL WITH TEFLON® TAPE

Gasket Set 2022106800

Item #	Part Qty.	Number	Description
1	1	2024703501	gasket, valve plate to head
1	1	2024704501	gasket, cylinder to valve plate
1	1	2024704300	gasket, crankcase to cylinder
1	1	2024703800	gasket, bearing carrier
1	1	2024719400	oil seal
6	6	2014706635	spring washer
6	6	2022203100	head bolts

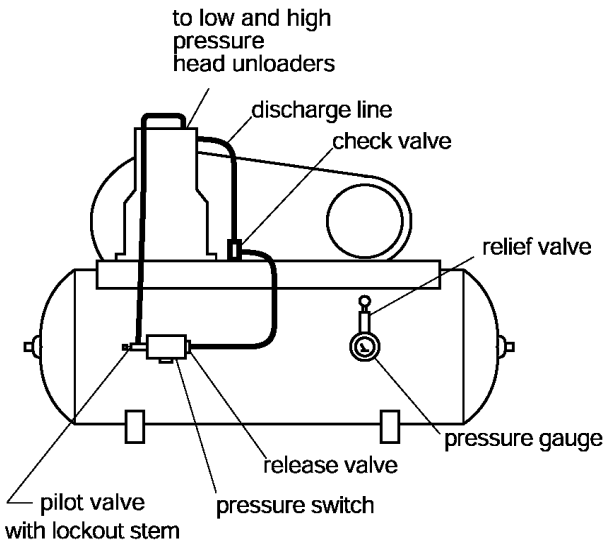
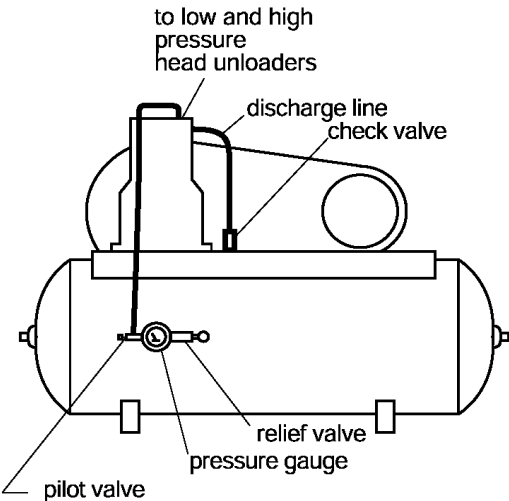


CONTROL PIPING SCHEMATICS



**Control Piping
For Automatic Start/Stop**
(with loadless starting)

**Control Piping
For Continuous Run**

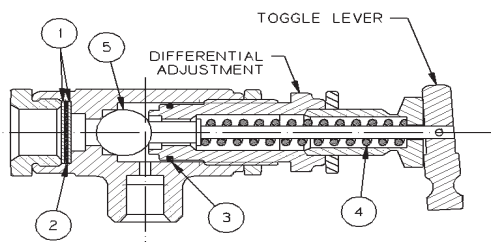


**Control Piping
For Dual Control**

*For Start / Stop operation
the pilot valve is open
(stem screwed out)*

*For Continuous Run operation
the pilot valve is closed
(stem screwed in)*

PILOT VALVES

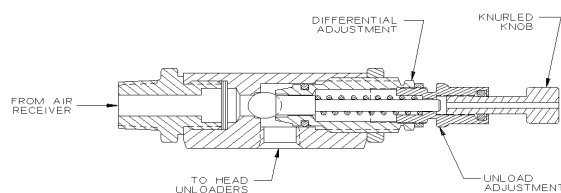


20239116xx Series Pilot Valve (continuous run operation)

See Part # below to 20239116xx (per pressure setting) to obtain correct pilot valve.

Part #	Load PSI	Unload PSI
2023911608	90	100
2023911616	*	30-70 adjustable
2023911617	*	71-150 adjustable
2023911618	*	151-175 adjustable

* Customer to set, see differential setting chart. Additional factory preset valves are available upon request.



20239121xx Series Pilot Valve (dual control operation)

See Part # below to 20239121xx (per pressure setting) to obtain correct pilot valve.

Part #	Load PSI	Unload PSI
2023912107	100	115
2023912108	125	140
2023912111	150	165

Pilot Valve Repair Kit 2023911651

Can be used to repair 20239116xx series pilot valves only. Customer must specify which spring when ordering kit.

Item #	Qty.	Part Number	Description
1	2		screen
2	1		filter
3	1		"o"ring
4	1	see chart below	pilot valve spring
5	1		ball

Differential Setting Chart

Applies to 20239121xx series pilot valves only.

Unload (PSI)	Min. Dif. (PSI)	Max. Dif. (PSI)
40	2	5
60	3	10
100	4	20
150	5	30
175	5	45

Differential Setting Chart

Spring Part # (item 4)	Unload (PSI)	Min. Dif. (PSI)	Max. Dif. (PSI)
2023911652 (red)	30	2	4
"	40	5	8
"	50	5	8
"	60	5	8
"	70	5	10
2023911653 (yellow)	80	5	10
"	90	5	12
"	100	5	13
"	110	5	15
"	120	5	15
"	130	5	18
"	140	5	18
"	150	5	20
2023911654 (green)	160	5	15
"	170	5	20
"	175	5	23

WARNING !

Not all pilots are for use with all compressor systems. Make sure that the pilot you order is set within the safe operating limits of your compressor. Failure to heed this warning could result in an explosion.

SUCTION VALVE UNLOADER ASSEMBLIES

Description

The Quincy suction valve unloader assembly consists of unloading assemblies on the suction valves, having a plunger to contact the suction valve reed and an unloader pilot valve (20239116xx or 20239121xx series) to automatically regulate the passing of air tank pressure to the unloading arrangement.

Continuous Run Operation

Suction valve unloader assemblies are recommended for use on Quincy compressors where the compressor is to run continuously and a constant pressure is to be maintained. The purpose is to automatically unseat the suction valve of the compressor when the air supply is greater than the demand.

Unloading occurs when air tank pressure is sufficient to overcome pilot valve spring pressure. The check ball is then unseated, allowing air tank pressure to pass to the unloader assemblies. The compressor will run unloaded until the air tank pressure drops to a predetermined level. At this time, the action of the ball is reversed, shutting off air tank pressure to the unloader assemblies and venting the unloader to atmosphere. This allows the compressor to load. The drive, either electric motor or engine, runs continuously and must be started and stopped manually. 20239116xx series pilot valves feature a toggle lever which can be flipped to provide manual unloading.

Dual Control Operation

Dual control operation is designed to provide a choice between "start/stop" or "continuous run" operation. The 20239121xx series pilot valve can be set for "start/stop" operation by turning the knurled knob at the end of the pilot valve (*refer to illustration for 20239121xx series pilot valve*) clockwise until it stops. Under these circumstances, a pressure switch is required to stop the motor. Failure to use a pressure switch, with the pilot valve locked out, will result in unsafe conditions.

WARNING !

A pressure switch must be incorporated whenever 20239121xx series pilot valve is employed as part of the control system.

The compressor will operate in the continuous run mode if the knurled knob is turned counterclockwise until it stops.

Installation

The pilot valve is mounted directly into the air tank. Compressors in the field, not equipped with these controls, can be converted. Consult your local Quincy distributor for assistance with conversion procedures.

Service

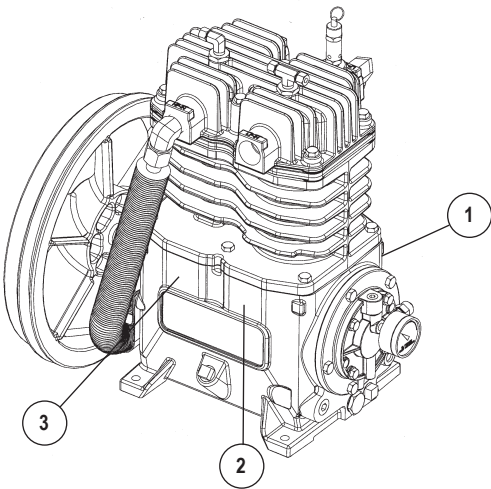
If a change in pilot valve operation is detected, remove the pilot valve from the air tank and check the screen in the inlet of the pilot valve for obstructions. Clean the screen if necessary.

Adjustment

The unloading pressure is adjustable and is regulated by turning the unload adjustment hex nut (*refer to pilot valve illustrations*). Turn the hex nut clockwise to increase and counterclockwise to decrease the unloading pressure.

The differential (difference between unloading and loading pressure) is set by turning the differential adjustment hex nut (*refer to pilot valve illustrations*). Increase the differential pressure by turning the hex nut clockwise - decrease by turning counterclockwise. Make all adjustments in small increments. Tighten the locknuts after adjustment.

DECALS



Decals			
Item #	Qty.	Part Number	Description
1	1	2024108000	serial number & nameplate
2	1	2024107202	decal, CAUTION!, MANUAL
3	1	2024107203	decal, DANGER!,"Air from this...."

TYPICAL UNIT REPAIR PARTS LIST

The parts listed here are for standard QT-7.5 (up to 175 PSI) units and may or may not be applicable to custom built units. Check with your local authorized Quincy distributor for parts that can be used for custom built units. Make sure the components you order are rated within the safe operating limits of your system. If you are doubtful about which components to order, contact your local Quincy distributor.

(QT-7.5 simplex - horizontal tank - electric motor)

Qty	Part Number	Part Number	Part Number	Description
	80 gal.	120 gal.		
1	2023101001	2023101401		tank (200 PSI maximum operating pressure)
1	2023907900	2023913803		tank drain valve
1	2023913804	2023913805		service valve
1	2025018507	2025018507		pressure gauge
1	2023710130	2023710130		pressure switch
1	2023913015	2023913015		pressure relief valve (in tank; 200 PSI)
1	2023913610	2023913610		pressure relief valve (in discharge line; 215 PSI)
1	2023914100	2023914100		check valve
4 ft.	2023200507	2023200507		discharge tube
2	2024903708	2024903708		tube fitting, nut with sleeve
1	2021030801	2021030801		belt guard assembly
	7.5 h.p.			
1	2024200416			drive belt
1	2024208500			motor pulley
1	2024222616			motor bushing
	115/230v, 1Ø	200v, 3Ø	230/460v, 3Ø	
1	*2023000927	2023000904	2023000928	7.5 h.p. motor (ODP)

* 230 volt only

Part numbers shown in italics apply to tank mounted units and base mounted units.

(QT-7.5 duplex - horizontal tank - electric motor)

Qty	Part Number	Part Number	Part Number	Description
	120 gal.	200 gal.		
1	2023102101	113469-200		tank (200 PSI maximum operating pressure)
2	2023301701	2023301701		top plate
1	2023913803	2023913803		tank drain valve
1	2023913805	2023913805		service valve
1	2025018507	2025018507		pressure gauge
2	2023710130	2023710130		pressure switch, 135-175 PSI
1	2023913015	2023913015		pressure relief valve (in tank; 200 PSI)
2	2023913610	2023913610		pressure relief valve (in discharge line; 215 PSI)
2	2023914100	2023914100		check valve
8 ft.	2023200507	2023200507		discharge tube
2	2024903708	2024903708		tube fitting, nut with sleeve
2	2021030801	2021030801		belt guard assembly
	7.5 h.p.			
2	2024200416			drive belt
2	2024208500			motor pulley
2	2024222616			motor bushing
	115/230v, 1Ø	200v, 3Ø	230/460v, 3Ø	
1	*2023000927	2023000904	2023000928	7.5 h.p. motor (ODP)

* 230 volt only

Part numbers shown in italics apply to tank mounted units and base mounted units.

TYPICAL UNIT REPAIR PARTS LIST

The parts listed here are for standard QT-7.5 (up to 175 PSI) units and may or may not be applicable to custom built units. Check with your local authorized Quincy distributor for parts that can be used for custom built units. Make sure the components you order are rated within the safe operating limits of your system. If you are doubtful about which components to order, contact your local Quincy distributor.

(QT-7.5 vertical tank - electric motor)

Qty	Part Number	Part Number	Part Number	Description
	80 gal.	120 gal.		
1	2023103908	2023103301		tank (200 PSI max. working pressure)
1	2023912903	2023912903		tank drain valve
1	2023913804	2023913804		ball valve
1	2025018507	2025018507		pressure gauge
1	2023710130	2023710130		pressure switch (135-175 PSI)
1	2023913015	2023913015		pressure relief valve (in tank; 200 PSI)
4 ft.	2023200507	2023200507		! discharge tube (3/4" copper tube to be formed by customer)
2	2024903708	2024903708		tube fitting, nut with sleeve
1	2023914100	2023914100		check valve
1	2023913610	2023913610		relief valve (in discharge line; 215 PSI)
1	2021030801	2021030801		belt guard assembly
	7.5 h.p.			
1	2024200416			drive belt
1	2024208500			motor pulley
1	2024208500			motor bushing
	115/230v, 1Ø	200v, 3Ø	230/460v, 3Ø	
1	*2023000927	2023000904	2023000928	7.5 h.p. motor (ODP)

! Pre-formed discharge tubes are available. Contact factory with model & tank size information.

* 230 volt only.

(QT-7.5 Kohler gasoline engine driven)

Qty	Part Number	Part Number	Part Number	Description
	base unit	tank unit		
1		2023103006		tank (200 PSI maximum operating pressure)
1	2023304200			top plate
1		2023913801		tank drain valve
1		2023913803		ball valve
1		2025018507		pressure gauge
1		2023913015		pressure relief valve (in tank; 200 PSI)
2	2024200717	2024200717		drive belt
1	2024217800	2024217800		engine pulley
1	2024222614	2024222614		engine pulley bushing
1	2021101797	2021101797		belt guard assembly
1	2025008300	2025008300		throttle control (bullwhip cable)
1	2021096001	2021096001		Kohler engine group, 14 h.p. (includes exhaust system & throttle control)
3 ft.		2023200507		! discharge tube (3/4" copper tube to be formed by customer)
2		2024903708		tube fitting, nut with sleeve
1	2023913610	2023913610		relief valve (in discharge line; 215 PSI)
1		2023913306		check valve
1		113708-175		pilot (165-175 PSI)
1	2023916401			discharge unloader valve

! Pre-formed discharge tubes are available. Contact factory with model & tank size information.

TYPICAL UNIT REPAIR PARTS LIST

The parts listed here are for standard QT-7.5 (up to 175 PSI) units and may or may not be applicable to custom built units. Check with your local authorized Quincy distributor for parts that can be used for custom built units. Make sure the components you order are rated within the safe operating limits of your system. If you are doubtful about which components to order, contact your local Quincy distributor.

(QT-7.5 Honda gasoline engine driven)

Qty	Part Number	Part Number	Part Number	Description
	base unit	tank unit		
1		2023103006		tank (200 PSI maximum operating pressure)
1	2023304200			top plate
1		2023913801		tank drain valve
1		2023913803		ball valve
1		2025018507		pressure gauge
1		2023913015		pressure relief valve (in tank; 200 PSI)
2	2024200717	2024200717		drive belt
1	2024217800	2024217800		engine pulley
1	2024222614	2024222614		engine pulley bushing
1	2021101792	2021101792		belt guard assembly
1	2025008784	2025008784		throttle control
1	2021061504	2021061504		Honda engine group, 13 h.p. (includes exhaust system & throttle control)
3 ft.		2023200507		! discharge tube (3/4" copper tube to be formed by customer)
2		2024903708		tube fitting, nut with sleeve
1	2023913610	2023913610		relief valve (in discharge line; 215 PSI)
1		2023913306		check valve
1		2023912809		pilot (165-175 PSI)
1	2023916401			discharge unloader valve

! Pre-formed discharge tubes are available. Contact factory with model & tank size information.

(QT-7.5 Yanmar diesel engine driven)

Qty	Part Number	Part Number	Part Number	Description
	base unit	tank unit		
1		2023103006		tank (200 PSI)
1	2023304200			top plate
1		2023913801		tank drain valve
1		2023913803		ball valve
1		2025018507		pressure gauge
1		2023913015		pressure relief valve (200 PSI)
2	2024200425	2024200425		drive belt
1	2024208400	2024208400		engine pulley
1	2024222605	2024222605		engine pulley bushing
1	2021101791	2021101791		belt guard assembly
1	2025008200	2025008200		throttle control
1	2021065302	2021065301		! Yanmar engine group, 10 h.p. (includes throttle control)
2.5 ft.		2023200507		discharge tube (3/4" copper tube to be formed by customer)
2		2024903708		tube fitting, nut with sleeve
1		2023913610		pressure relief valve (in discharge line; 215 PSI)
1		2023913306		check valve (discharge line)
1	2023912809	2023912809		pilot (165-175 PSI)

! Pre-formed discharge tubes are available. Contact factory with model & tank size information.

QUINCY COMPRESSOR

STANDARD TERMS AND CONDITIONS

LEGAL EFFECT: Except as expressly otherwise agreed to in writing by an authorized representative of Seller, the following terms and conditions shall apply to and form a part of this order and any additional and/or different terms of Buyer's purchase order or other form of acceptance are rejected in advance and shall not become a part of this order.

The rights of Buyer hereunder shall be neither assignable nor transferable except with the written consent of Seller.

This order may not be canceled or altered except with the written consent of Seller and upon terms which will indemnify Seller against all loss occasioned thereby. All additional costs incurred by Seller due to changes in design or specifications, modification of this order or revision of product must be paid for by Buyer.

In addition to the rights and remedies conferred upon Seller by this order, Seller shall have all rights and remedies conferred at law and in equity and shall not be required to proceed with the performance of this order if Buyer is in default in the performance of such order or of any other contract or order with seller.

TERMS OF PAYMENT: Unless otherwise specified in the order acknowledgment, the terms of payment shall be 1% 15, net forty-five (45) days after shipment. These terms shall apply to partial as well as complete shipments. If any proceeding be initiated by or against Buyer under any bankruptcy or insolvency law, or in the judgment of Seller the financial condition of Buyer, at the time the equipment is ready for shipment, does not justify the terms of payment specified, Seller reserves the right to require full payment in cash prior to making shipment. If such payment is not received within fifteen (15) days after notification of readiness for shipment, Seller may cancel the order as to any unshipped item and require payment of its reasonable cancellation charges.

If Buyer delays shipment, payments based on date of shipment shall become due as of the date when ready for shipment. If Buyer delays completion of manufacture, Seller may elect to require payment according to percentage of completion. Equipment held for Buyer shall be at Buyer's risk and storage charges may be applied at the discretion of Seller.

Accounts past due shall bear interest at the highest rate lawful to contract for but if there is no limit set by law, such interest shall be eighteen percent (18%). Buyer shall pay all cost and expenses, including reasonable attorney's fees, incurred in collecting the same, and no claim, except claims within Seller's warranty of material or workmanship, as stated below, will be recognized unless delivered in writing to Seller within thirty (30) days after date of shipment.

TAXES: All prices exclude present and future sales, use, occupation, license, excise, and other taxes in respect of manufacture, sales or delivery, all of which shall be paid by Buyer unless included in the purchase price at the proper rate or a proper exemption certificate is furnished.

ACCEPTANCE: All offers to purchase, quotations and contracts of sales are subject to final acceptance by an authorized representative at Seller's plant.

DELIVERY: Except as otherwise specified in this quotation, delivery will be F. O. B. point of shipment. In the absence of exact shipping instruction, Seller will use its discretion regarding best means of insured shipment. No liability will be accepted by Seller for so doing. All transportation charges are at Buyer's expense. Time of delivery is an estimate only and is based upon the receipt of all information and necessary approvals. The shipping schedule shall not be construed to limit seller in making commitments for materials or in fabricating articles under this order in accordance with Seller's normal and reasonable production schedules.

Seller shall in no event be liable for delays caused by fires, acts of God, strikes, labor difficulties, acts of governmental or military authorities, delays in transportation or procuring materials, or causes of any kind beyond Seller's control. No provision for liquidated damages for any cause shall apply under this order. Buyer shall accept delivery within thirty (30) days after receipt of notification of readiness for shipment. Claims for shortages will be deemed to have been waived if not made in writing with ten (10) days after the receipt of the material in respect of which any such shortage is claimed. Seller is not responsible for loss or damage in transit after having received "In Good Order" receipt from the carrier. All claims for loss or damage in transit should be made to the carrier.

TITLE & LIEN RIGHTS: The equipment shall remain personal property, regardless of how affixed to any realty or structure. Until the price (including any notes given therefore) of the equipment has been fully paid in cash, Seller shall, in the event of Buyer's default, have the right to repossess such equipment.

PATENT INFRINGEMENT: If properly notified and given an opportunity to do so with friendly assistance, Seller will defend Buyer and the ultimate user of the equipment from any actual or alleged infringement of any published United States patent by the equipment or any part thereof furnished pursuant hereto (other than parts of special design, construction, or manufacture specified by and originating with Buyer), and will pay all damages and costs awarded by competent court in any suit thus defended or of which it may have had notice and opportunity to defend as aforesaid.

STANDARD WARRANTY: Seller warrants that products of its own manufacture will be free from defects in workmanship and materials under normal use and service for the period specified in the product instruction manual. Warranty for service parts will be Ninety (90) days from date of factory shipment. Electric Motors, gasoline and diesel engines, electrical apparatus and all other accessories, components and parts not manufactured by Seller are warranted only to the extent of the original manufacturer's warranty.

Notice of the alleged defect must be given to the Seller, in writing with all identifying details including serial number, type of equipment and date of purchase within thirty (30) days of the discovery of the same during the warranty period.

Seller's sole obligation on this warranty shall be, at its option, to repair or replace or refund the purchase price of any product or part thereof which proves to be defective. If requested by Seller, such product or part thereof must be promptly returned to seller, freight prepaid, for inspection.

Seller warrants repaired or replaced parts of its own manufacture against defects in materials and workmanship under normal use and service for ninety (90) days or for the remainder of the warranty on the product being repaired.

This warranty shall not apply and Seller shall not be responsible or liable for:

- (a) Consequential, collateral or special losses or damages;
- (b) Equipment conditions caused by fair wear and tear, abnormal conditions of use, accident, neglect or misuse of equipment, improper storage or damage resulting during shipping;
- (c) Deviation from operating instructions, specifications or other special terms of sale;
- (d) Labor charges, loss or damage resulting from improper operation, maintenance or repairs made by person(s) other than Seller or Seller's authorized service station.

In no event shall Seller be liable for any claims whether arising from breach of contract or warranty or claims of negligence or negligent manufacture in excess of the purchase price.

THIS WARRANTY IS THE SOLE WARRANTY OF SELLERS AND ANY OTHER WARRANTIES, WHETHER EXPRESS OR IMPLIED IN LAW OR IMPLIED IN FACT, INCLUDING ANY WARRANTIES OF MERCHANTABILITY AND FITNESS FOR PARTICULAR USE ARE HEREBY SPECIFICALLY EXCLUDED.

LIABILITY LIMITATIONS: Under no circumstances shall the Seller have any liability for liquidated damages or for collateral, consequential or special damages or for loss of profits, or for actual losses or for loss of production or progress of construction, whether resulting from delays in delivery or performance, breach of warranty, negligent manufacture or otherwise.

ENVIRONMENTAL AND OSHA REQUIREMENTS: At the time of shipment of the equipment from the factory, Quincy Compressor / Ortman Fluid Power will comply with the various Federal, State and local laws and regulations concerning occupational health and safety and pollution. However, in the installation and operation of the equipment and other matters over which the seller has no control, the Seller assumes no responsibility for compliance with those laws and regulations, whether by the way of indemnity, warranty or otherwise.

June 30, 2003



Reciprocating / Systems: 251.239.5900
E-mail: info@quincycompressor.com
Website: quincycompressor.com

