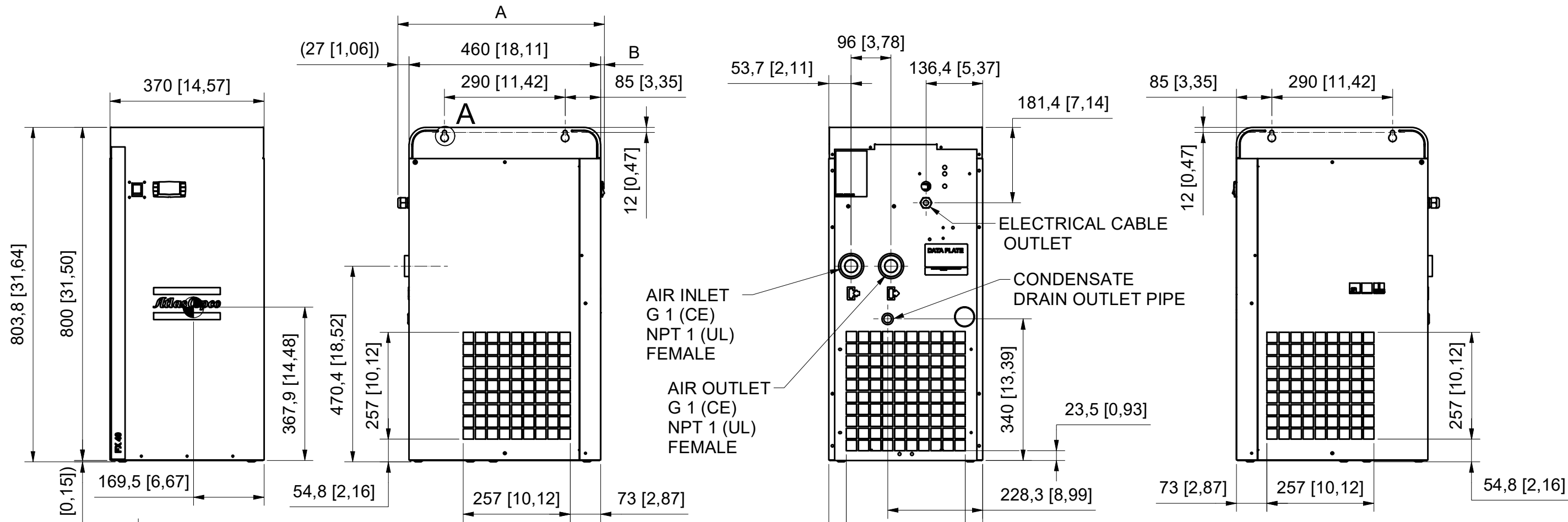


All materials supplied are in compliance with the requirements of the List of Prohibited Substances



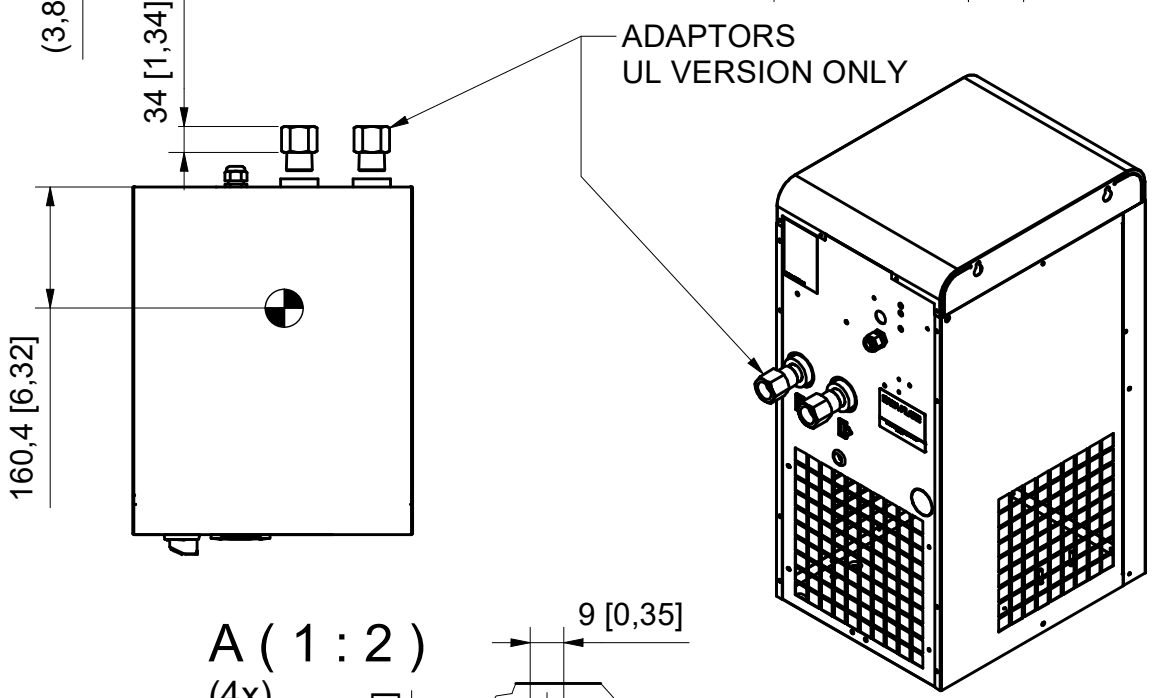
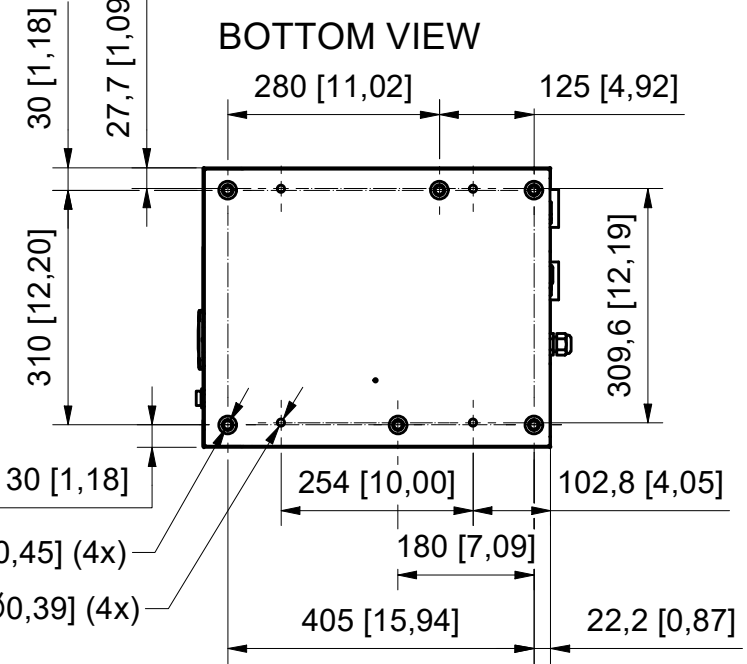
AIR INLET
G 1 (CE)
NPT 1 (UL)
FEMALE

AIR OUTLET
G 1 (CE)
NPT 1 (UL)
FEMALE

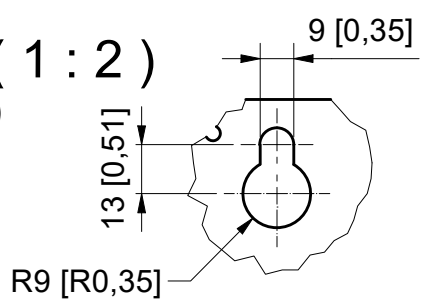
ELECTRICAL CABLE
OUTLET

CONDENSATE
DRAIN OUTLET PIPE

DRYER VERSION	A (mm / inch)	B (mm / inch)
CE	497 / 19,56	10 / 0,39
UL	514 / 20,23	27 / 1,06



A (1:2)
(4x)



CENTRE OF GRAVITY

ALL DIMENSIONS: mm [inch]

Tolerances, if not indicated, according to:		ATLAS COPCO STANDARD CLASS	
Name	DIMENS. DRWG	DRYER	Confidentiality Class acc. to 1102 K
Material	Not Applicable	FX6-7+FX40-50+FX21N-31N	Internal
Treatment	Not Applicable		INV
	Scale	1 : 12	Family E5-6
	Drawn by	CAIsbon	Blank nr.
STATUS	Drawing format	Blank wt	Fin. wt.
	A3		N/A
Approved Internal	Des checked.	Prod checked.	Approved.
			Date 26/04/2018
			Designation
			Sheet 1 / 1
			9828083737

CONFIDENTIAL: This document is property of Atlas Copco AB and shall not without our permission be altered, copied, used for manufacturing or communicated to any other person or company.

04	Added FX21N-31N versions. CID.27729. DN20054181.	31-10-20	CAlebettin	9828083737	
Ed	Modified from	Date	Intr./Appd.	Parent 3D model	Ed . Version 3D