

---

**Kaishan Technologies  
Rotary Screw Air  
Compressor**

---

**KRSD 25-30HP  
Parts Manual**

---

---

October 2022

(208V/230V/460V/575V/60HZ/FS/VSD/ASME/CRN/UL/CUL)

## TABLE OF CONTENTS

---

<b>Service Parts .....</b>	<b>3</b>
<b>Serial Number .....</b>	<b>3</b>
<b>Fluid Specification .....</b>	<b>4</b>
<b>Spare Parts .....</b>	<b>5</b>
<b>Airend and Inlet valve.....</b>	<b>6</b>
<b>Base Mounting.....</b>	<b>10</b>
<b>Reservoir .....</b>	<b>12</b>
<b>Driving System and Electrical Motor .....</b>	<b>14</b>
<b>Air Cooler .....</b>	<b>16</b>
<b>Fluid Piping.....</b>	<b>18</b>
<b>Air Piping.....</b>	<b>22</b>
<b>Cabinet(Fixed speed) .....</b>	<b>24</b>
<b>Cabinet(VSD) .....</b>	<b>26</b>
<b>Electrical Enclosure(Fixed speed).....</b>	<b>28</b>
<b>Electrical Enclosure(VSD) .....</b>	<b>34</b>
<b>Decals .....</b>	<b>40</b>
<b>Standard Terms and Conditions.....</b>	<b>43</b>
<b>Appendix.....</b>	<b>46</b>
<b>Contact Information .....</b>	<b>47</b>

## Service Parts

---

The following information must be provided for ordering service parts:

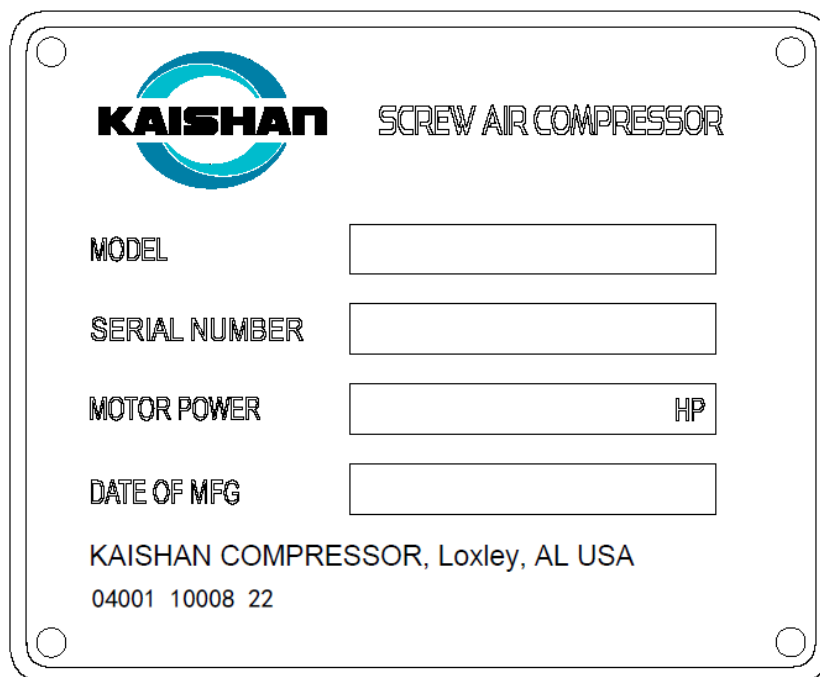
1. The serial number of unit must be provided. It will be verified to ensure correct replacement parts are ordered.
2. Service parts must be ordered from closest authorized distributor.
3. Exact part number, quantity and delivery method must be provided.

All service parts must be ordered through nearest authorized distributor. Insist on genuine manufacturer parts only. Failure to do so may void product warranty.

## Serial Number

---

The unit serial number can be found on serial number tag, which is located on the cabinet corner post of the unit. The serial number tag is shown as follows.



The image shows a rectangular serial number tag with rounded corners and four mounting holes. At the top left is the Kaishan logo, a blue circle with the word "KAISHAN" in bold black letters. To the right of the logo is the text "SCREW AIR COMPRESSOR". Below this, there are four rows of labels and input fields: "MODEL" with a rectangular box, "SERIAL NUMBER" with a rectangular box, "MOTOR POWER" with a rectangular box and "HP" to its right, and "DATE OF MFG" with a rectangular box. At the bottom of the tag, it reads "KAISHAN COMPRESSOR, Loxley, AL USA" and "04001 10008 22".

## Fluid Specification

---

All KRSD Compressors must use KCA recommended fluid for maintenance.

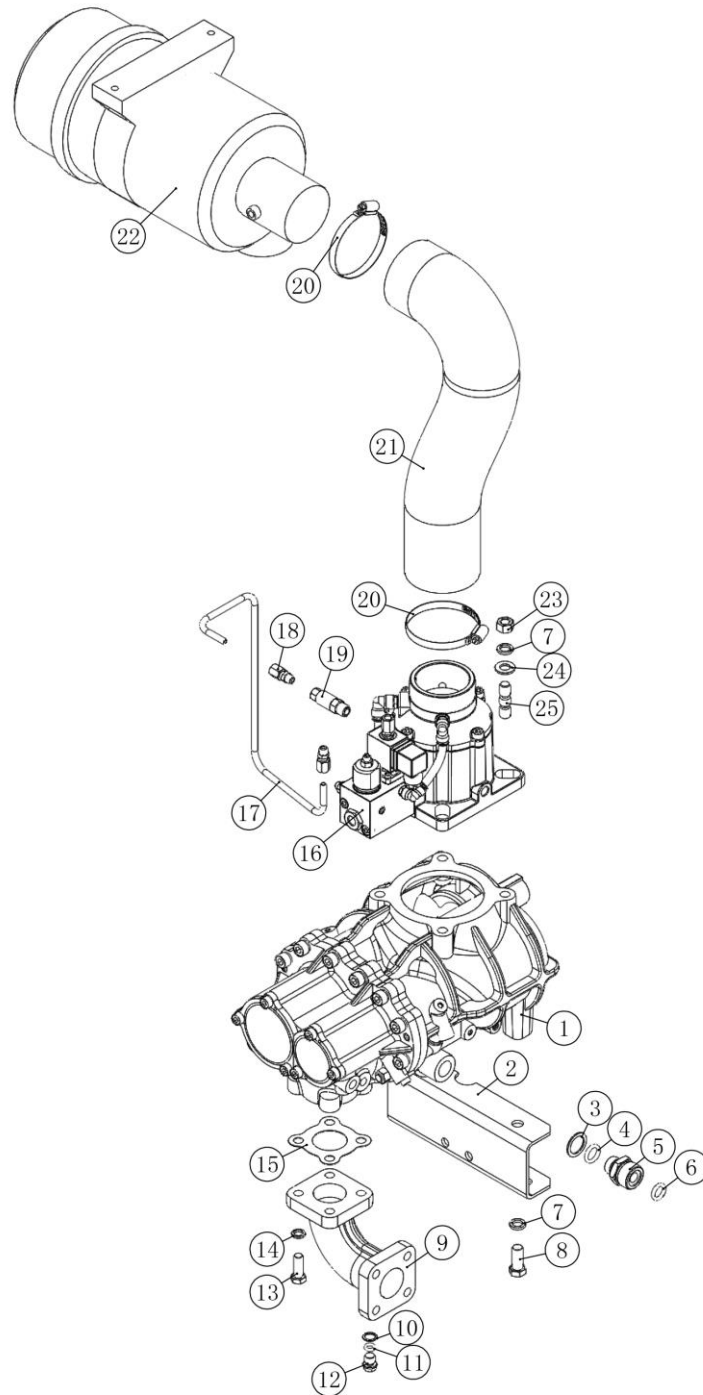
## Spare Parts

Recommended spare parts are shown as follows:

ITEM	No.	QTY	PART NUMBER	DESCRIPTION		
1		1	537702 320510	Air filter element		
2		1	07709 94172 00	Oil filter		
3		1	55135 170200	Fluid/air separator element		

# Airend and Inlet valve

---



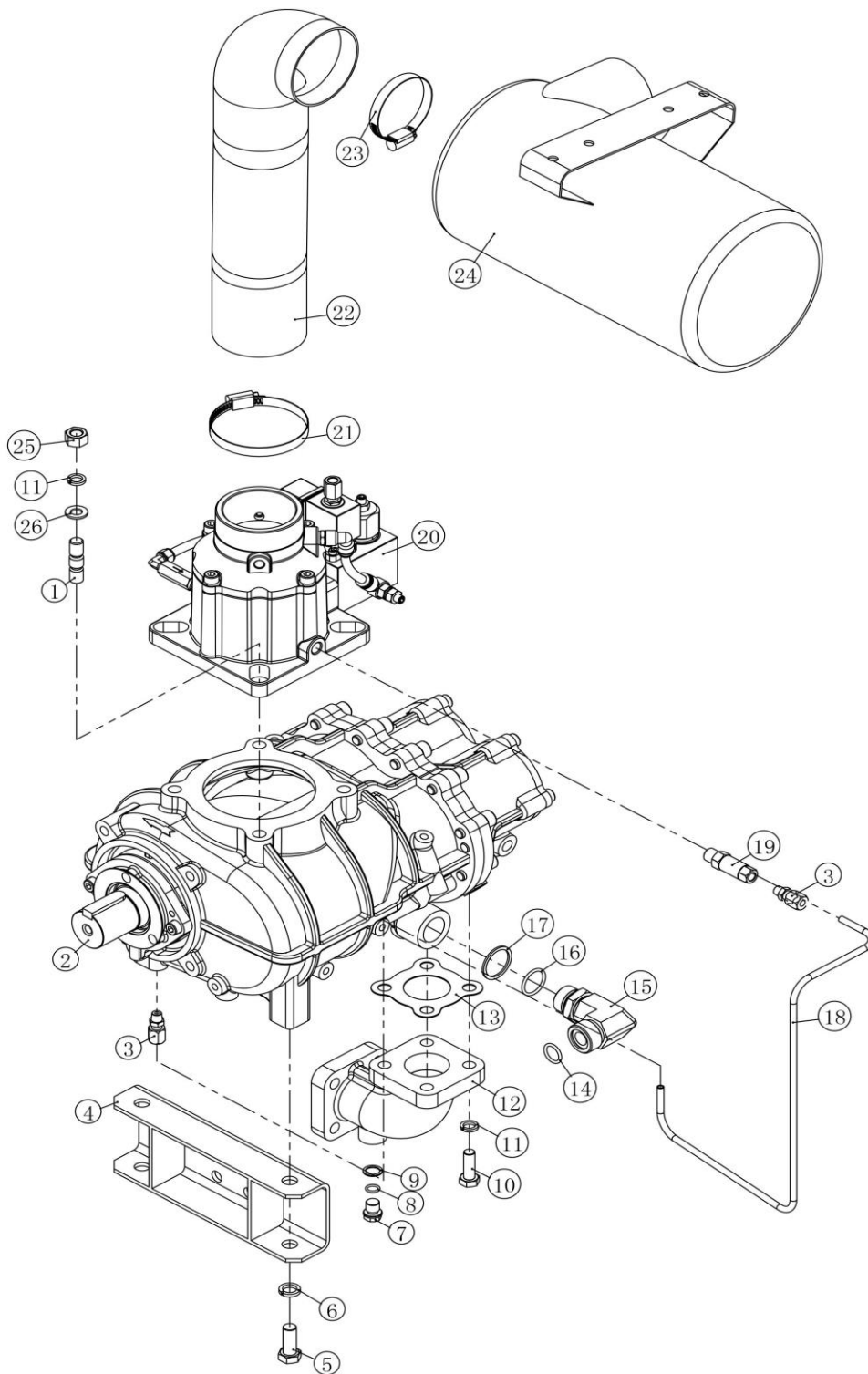
## Airend and Inlet valve

( 25HP )

NO.	PN	DESCRIPTION	QTY	REMARK
1	4160101	Airend	1	
2	13558 01002 19	Airend support	1	
3	02201 00015 00	Screw washer	1	
4	02901 01800 20	O-ring	1	18X2.65
5	13315 06001 09	Joint	1	
6	02901 01600 20	O-ring	1	16X2.65
7	01365 12000 00	Washer	2	12
8	01307 12030 00	Bolt	1	M12X30
9	13424 03001 00	Discharge pipe	1	
10	02201 01215 00	Screw washer	1	
11	02901 00950 10	O-ring	1	9.5X1.8
12	18404 03100 00	Plug	1	M12X1.5
13	01307 10030 00	Bolt	1	M10X30
14	01365 10000 00	Washer	1	10
15	02217 07504 16	Gasket	1	
16	01608 06507 07	Inlet valve	1	
*16A	04002 00065 03	Inlet valve kit	1	Check spring, Spring, O-ring 54x3, Piston ring, Seal gasket, O-ring 28x2, O-ring 110.72x3.53
*16B	01610 90266 00	Check valve	1	
*16C	01605 10061 57	Blowdown valve	1	
*16D	01603 10061 57	Solenoid valve	1	
17	86433 01001 69	Oil return pipe	1	
18	01512 06100 00	Joint	2	
19	01610 03000 00	Check valve	1	
20	04401 08001 00	Hoop	2	
21	02907 08080 42	Flexible pipe	1	
22	537702 320500	Air filter	1	
	537702 320510	Air filter element		
23	01322 12000 00	Nut	1	M12
24	01366 12000 00	Washer	1	12
25	01392 12030 00	Stud	1	AM12X30
26*	02809 00102 00	Differential Pressure Switch		

\* Items not shown on the drawing.

## Airend and Inlet valve





## Airend and Inlet valve

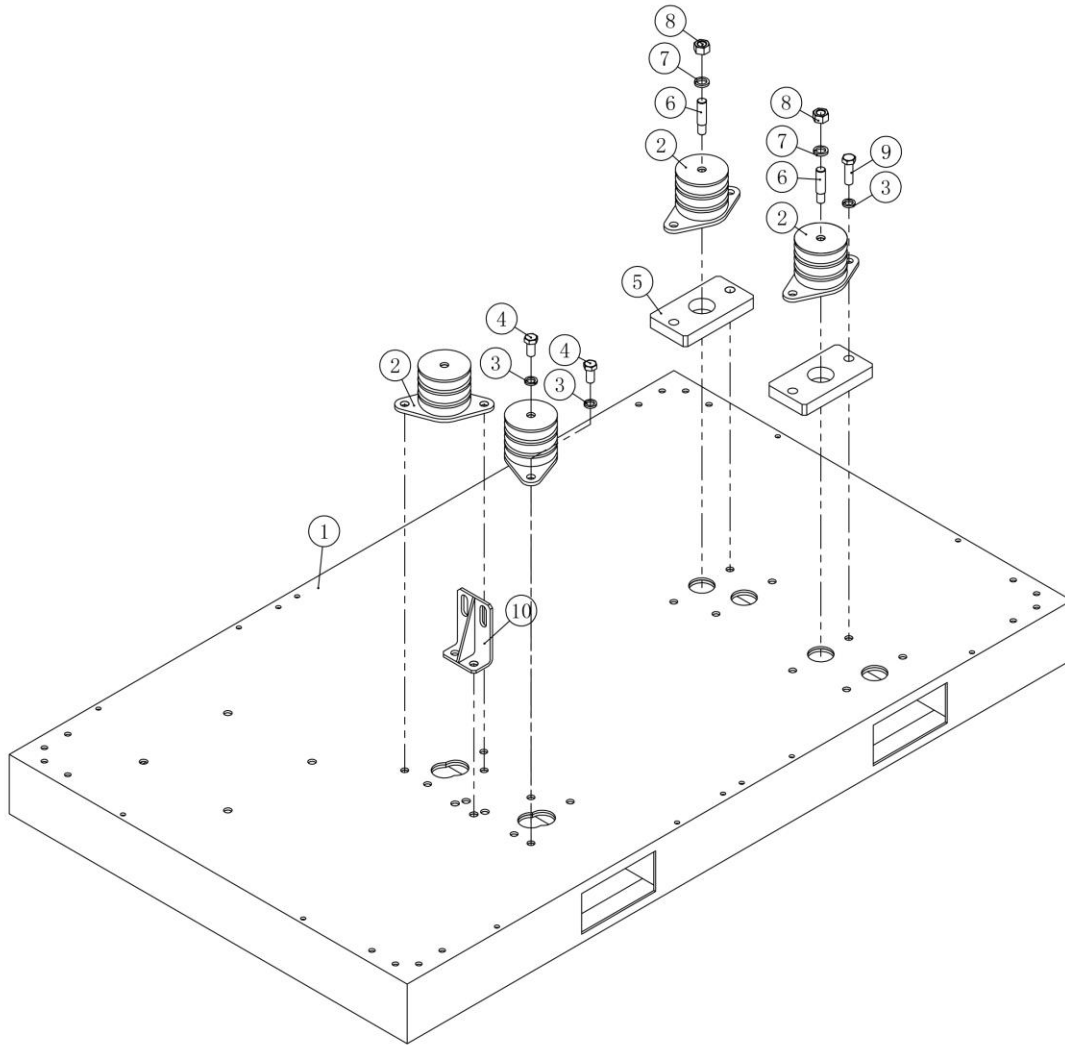
( 30HP )

NO.	PN	DESCRIPTION	QTY	REMARK
1	01392 12030 00	Stud	1	AM12X30
2	4010101	Airend	1	
3	01512 06100 00	Joint	2	
4	13458 01002 09	Airend support	1	
5	01307 12030 00	Bolt	1	M12X30
6	01365 12000 00	Washer	1	12
7	18404 03100 00	Plug	1	M12X1.5
8	02901 00950 10	O-ring	1	9.5X1.8
9	02201 01215 00	Screw washer	1	
10	01307 10030 00	Bolt	1	M10X30
11	01365 10000 00	Washer	2	10
12	13424 03001 00	Discharge pipe	1	
13	02217 07504 16	Gasket	1	
14	02901 01600 20	O-ring	1	16X2.65
15	16435 06006 02	Adjustable elbow	1	
16	02901 02360 20	O-ring	1	23.6X2.65
17	02201 00020 00	Screw washer	1	
18	87433 01001 69	Oil return pipe	1	
19	01610 03000 00	Check valve	1	
20	01608 06507 07	Inlet valve	1	
*20A	04002 00065 03	Inlet valve kit	1	Check spring, Spring, O-ring 54x3, Piston ring, Seal gasket, O-ring 28x2, O-ring 110.72x3.53
*20B	01610 90266 00	Check valve	1	
*20C	01605 10061 57	Blowdown valve	1	
*20D	01603 10061 57	Solenoid valve	1	
21	04401 08001 00	Hoop	1	
22	02907 08080 40	Flexible pipe	1	
23	04401 08001 00	Hoop	1	
24	537702 320500	Air filter	1	
	537702 320510	Air filter element		
25	01322 12000 00	Nut	1	M12
26	01366 10000 00	Washer	1	10
27*	02809 00102 00	Differential Pressure Switch		

\* Items not shown on the drawing.

# Base Mounting

---



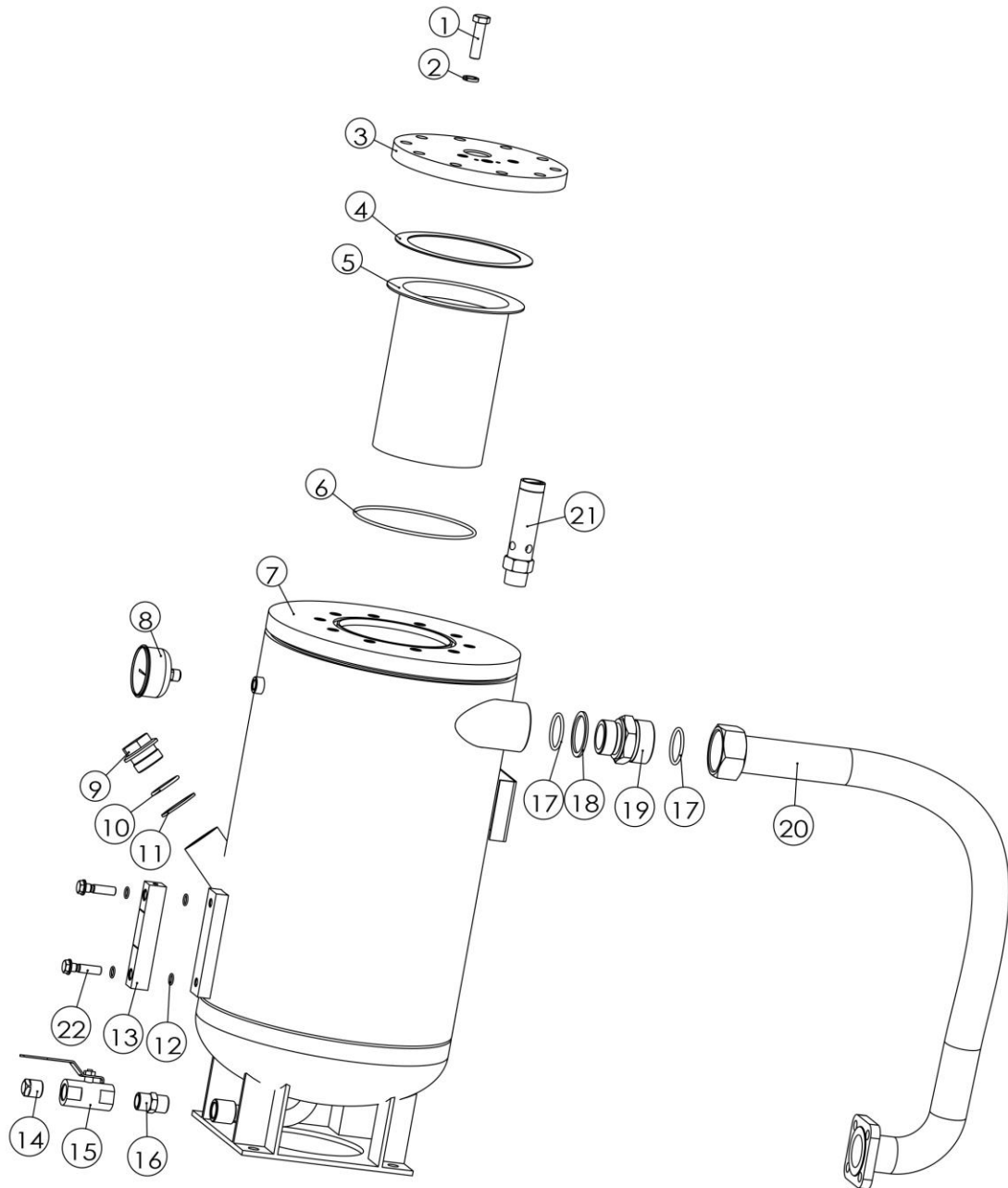
## Base Mounting

(/)

---

NO.	PN	DESCRIPTION	QTY	REMARK
1	87433 02010 69	Base	1	FS
	87244 02010 09			VSD
2	02905 00001 00	Absorber	4	
3	01365 12000 00	Washer	3	12
4	01307 12025 00	Bolt	2	M12X25
5	13424 02002 00	Block	2	
6	13340 02001 09	Stud	2	
7	01365 14000 00	Washer	2	14
8	01322 14000 00	Nut	2	M14
9	01307 12040 00	Bolt	1	M12X40
10	16315 00001 07	Fixing plate,shipping	1	

# Reservoir



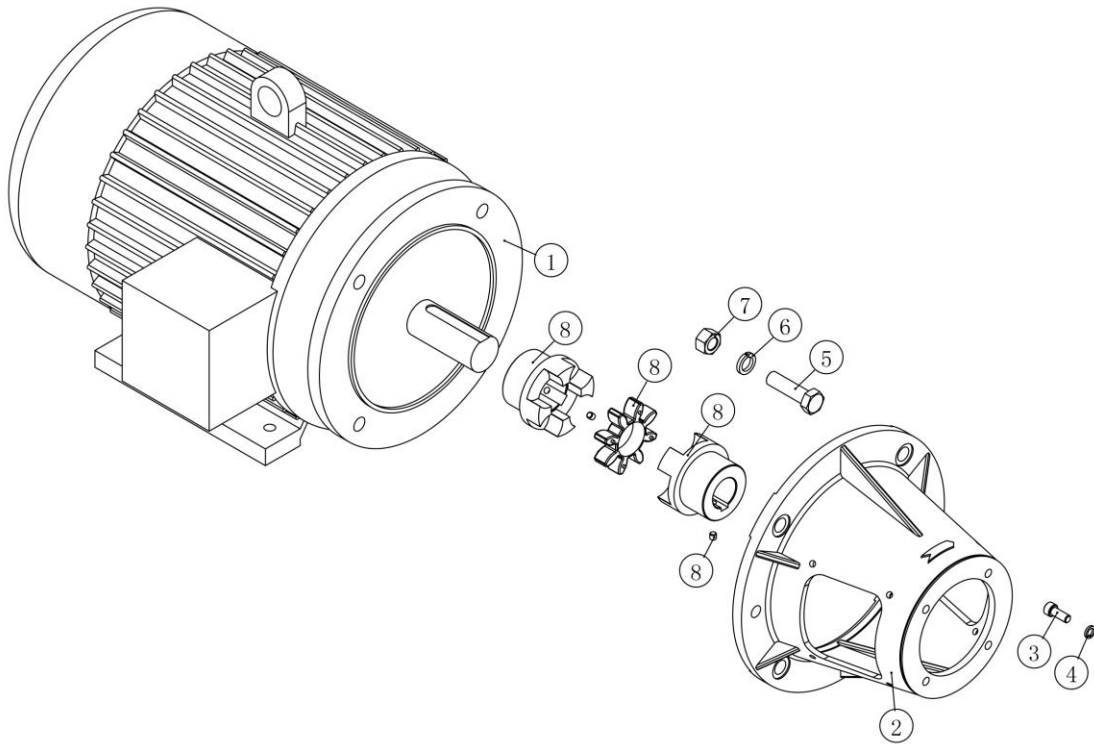
## Reservoir

(GROUP PN: )

NO.	PN	DESCRIPTION	QTY	REMARK
1	01310 12045 00	Bolt	10	M12X45
2	01365 12000 00	Washer	10	12
3	87433 03014 69	Top cover	1	
4	02216 13172 01	Gasket	1	
5	55135 170200	Fluid/air separator element	1	
6	02901 14500 30	O-ring	1	145X3. 55
7	87433 03010 69	Fluid/air separator	1	
8	02801 06308 00	Pressure gage	1	
9	13340 03003 00	Plug	1	
10	02901 03350 30	O-ring	1	33. 5X3. 55
11	02201 03320 00	Screw washer	1	
12	02901 01060 10	O-ring	4	10. 6X1. 8
13	13315 03002 00	Oil sight glass	1	
14	13340 03001 00	Plug	1	
15	01613 01500 00	Ball valve	1	DN15
16	13340 03004 00	Joint	1	
17	02901 03870 30	O-ring	2	38. 7X3. 55
18	02201 00032 00	Screw washer	1	
19	21315 06100 09	Joint	1	
20	87433 03001 69	Fluid/air pipe	1	
21	/	Safety valve	1	NPT0. 75-10/ASME
22	13315 03001 00	Hollow bolt	2	M10X40

## Driving System and Electrical Motor

---



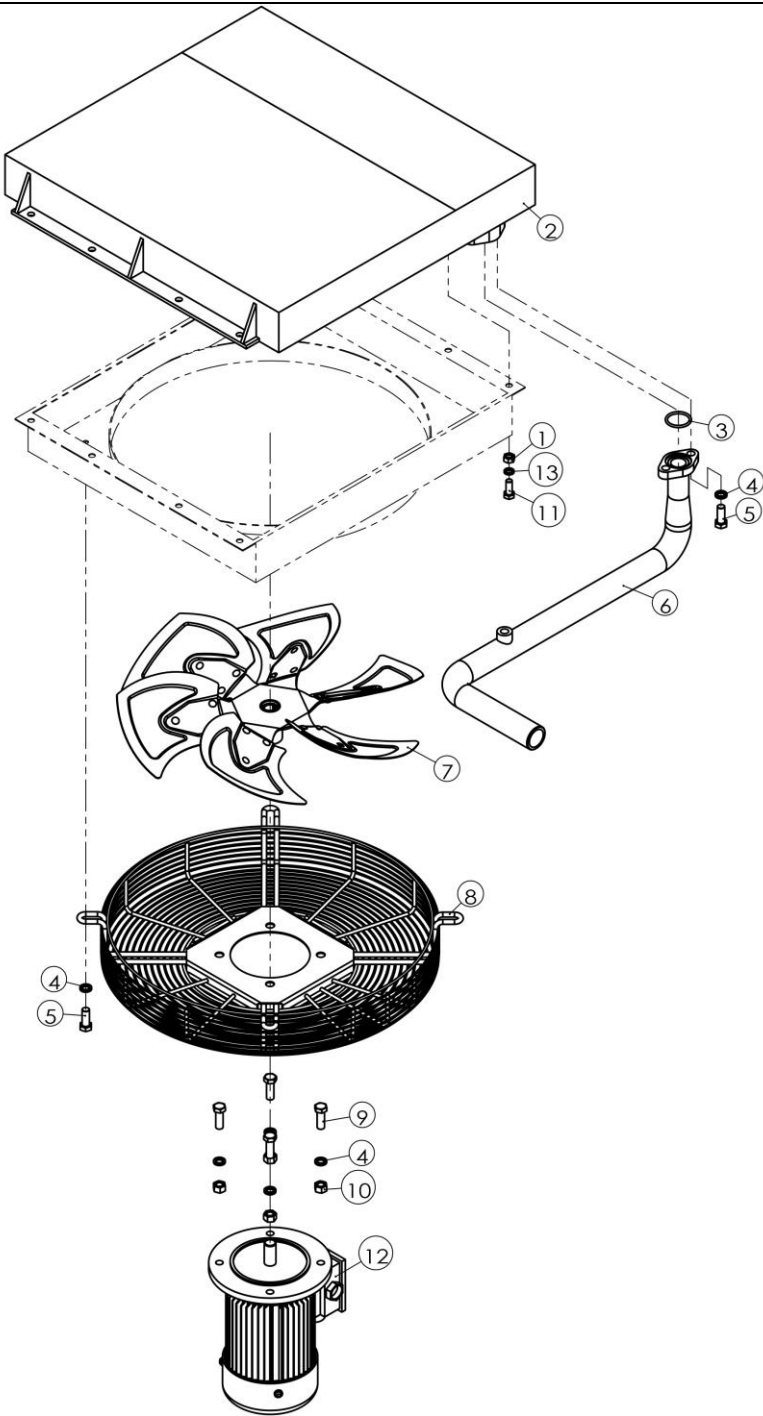
## Driving System and Electrical Motor

( / )

NO.	PN	DESCRIPTION	QTY	REMARK
1	62022 37642 25	Motor (30HP)	1	208-230/460V
	62022 58642 25			575V/FS
	62022 58942 25			575V/VSD
	62022 46942 25			460V/VSD
	62018 37642 25	Motor (25HP)	1	208-230/460V
	62018 58642 25			575V/FS
	62018 58942 25			575V/VSD
	62018 46942 25			460V/VSD
2	SKY84-15	Connecting cylinder	1	
3	01344 10025 00	Bolt	4	M10X25
4	01365 10000 00	Washer	4	10
5	01307 18065 00	Bolt	4	M18X65
6	01365 18000 00	Washer	4	18
7	01322 18000 00	Nut	4	M18
8	01902 04212 00	Coupling	1	

NO.	Coupling	Half coupling	Elastomer	Half coupling
8	01902 04212 00	01905 04204 00	01908 04200 00	01905 04204 80

# Air Cooler



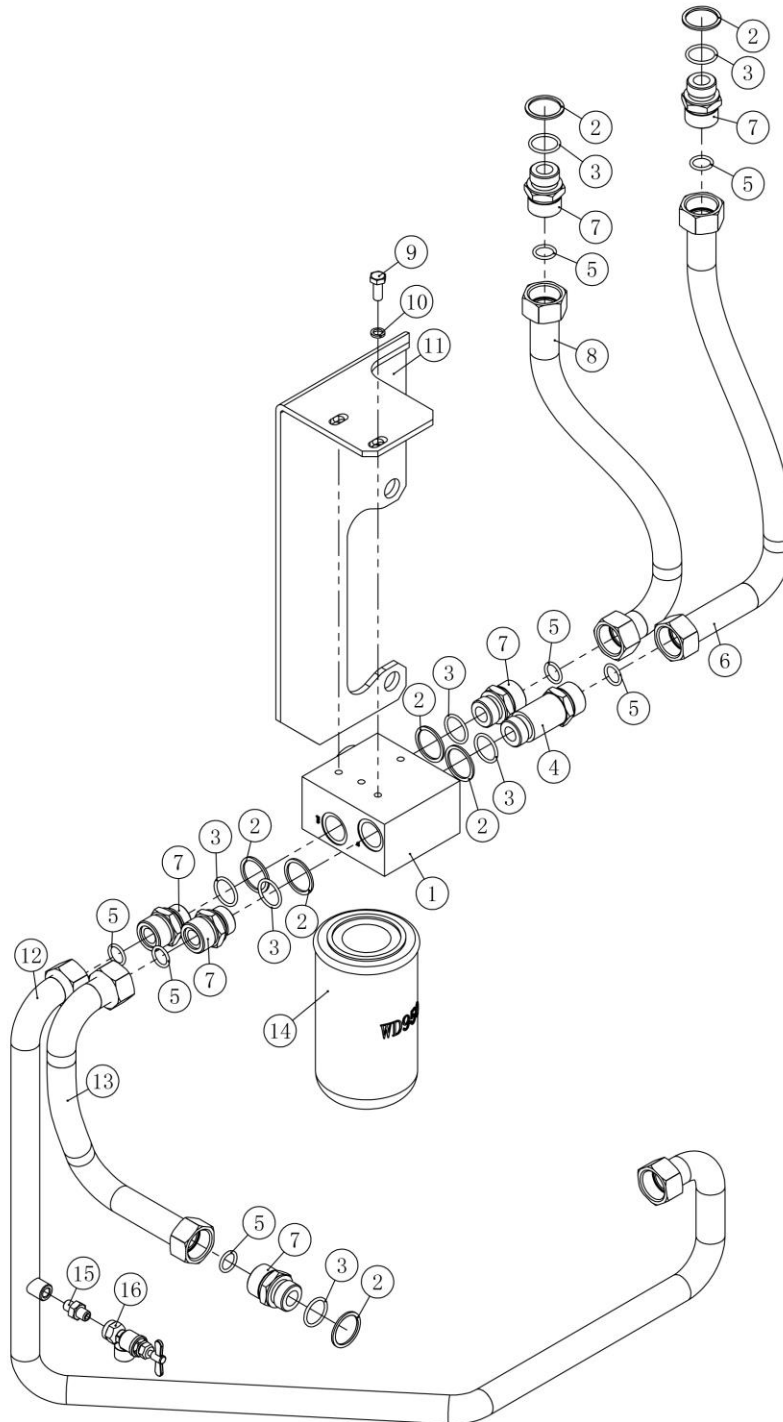


## Air Cooler

(GROUP PN: )

NO.	PN	DESCRIPTION	QTY	REMARK
1	01322 10000 00	Nut	8	M10
2	13323 05010 00	Cooler	1	
3	02901 03550 30	O-ring	1	35. 5X3. 55
4	01365 12000 00	Washer	6	12
5	01307 12030 00	Bolt	6	M12X30
6	87433 05001 69	Connecting pipe	1	
7	07204 50010 00	Blade	1	
8	07205 00500 02	Net shield	1	
9	01307 12035 00	Bolt	4	M12X35
10	01322 12000 00	Nut	4	M12
11	01307 10025 00	Bolt	8	M10X25
12	64175 46651 21	Motor(0. 75kw)		460V
	64175 37651 21			208/230/460V
	64175 58651 21			575V
13	01365 10000 00	Washer	8	10

# Fluid Piping



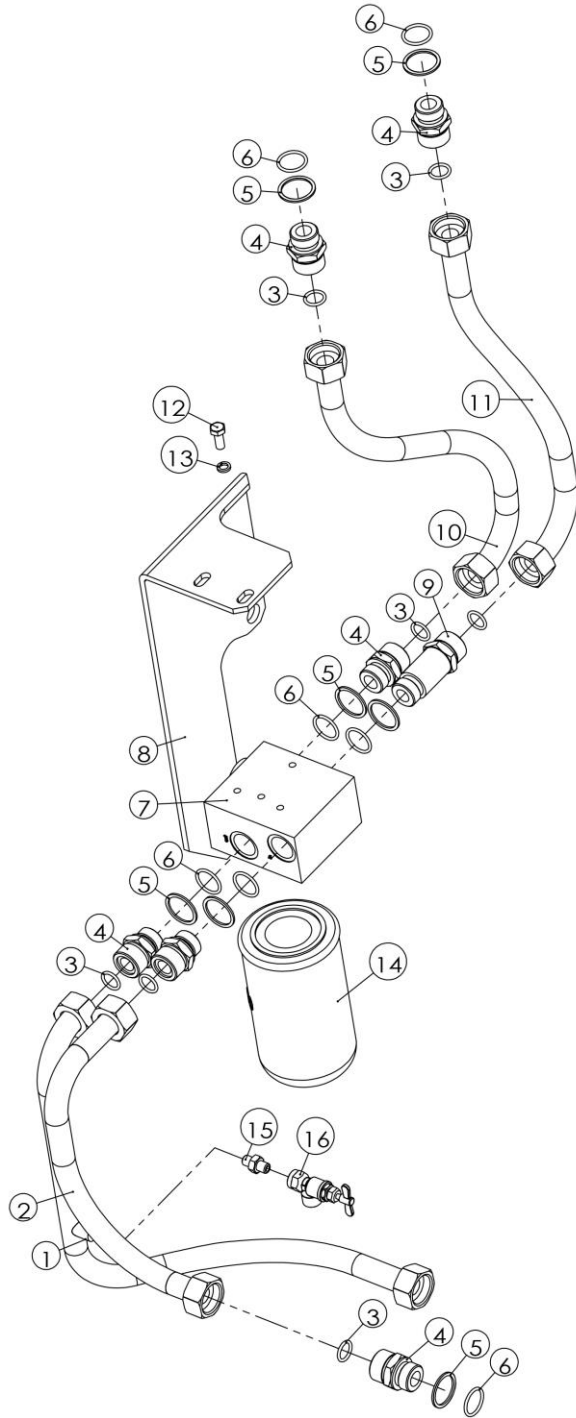
## Fluid Piping

(25HP)

NO.	PN	DESCRIPTION	QTY	REMARK
1	01611 02083 01	Thermal valve	1	
*1A	04004 20083 02	Thermal valve kit	1	O-ring 38x3, Valve element, Sleeve, Spring.
2	02201 00020 00	Screw washer	7	
3	02901 02360 20	O-ring	7	23.6X2.65
4	13333 06009 00	Connecting pipe	1	
5	02901 01600 20	O-ring	7	16X2.65
6	86433 06003 69	Oil pipe	1	Inlet cooler
7	13315 06009 09	Joint	6	
8	86433 06004 69	Oil pipe	1	Outlet cooler
9	01307 08020 00	Bolt	1	M8X20
10	01365 08000 00	Washer	1	8
11	87433 06001 69	Oil filter support	1	
12	86433 06001 69	Oil pipe	1	Inlet aierend
13	86433 06002 69	Oil pipe	1	Inlet thermal valve
14	07709 94172 00	Oil filter	1	
15	98018 07011 06	Joint	1	
16	01613 00600 99	Sample valve	1	

\* Items not shown on the drawing.

# Fluid Piping



## Fluid Piping

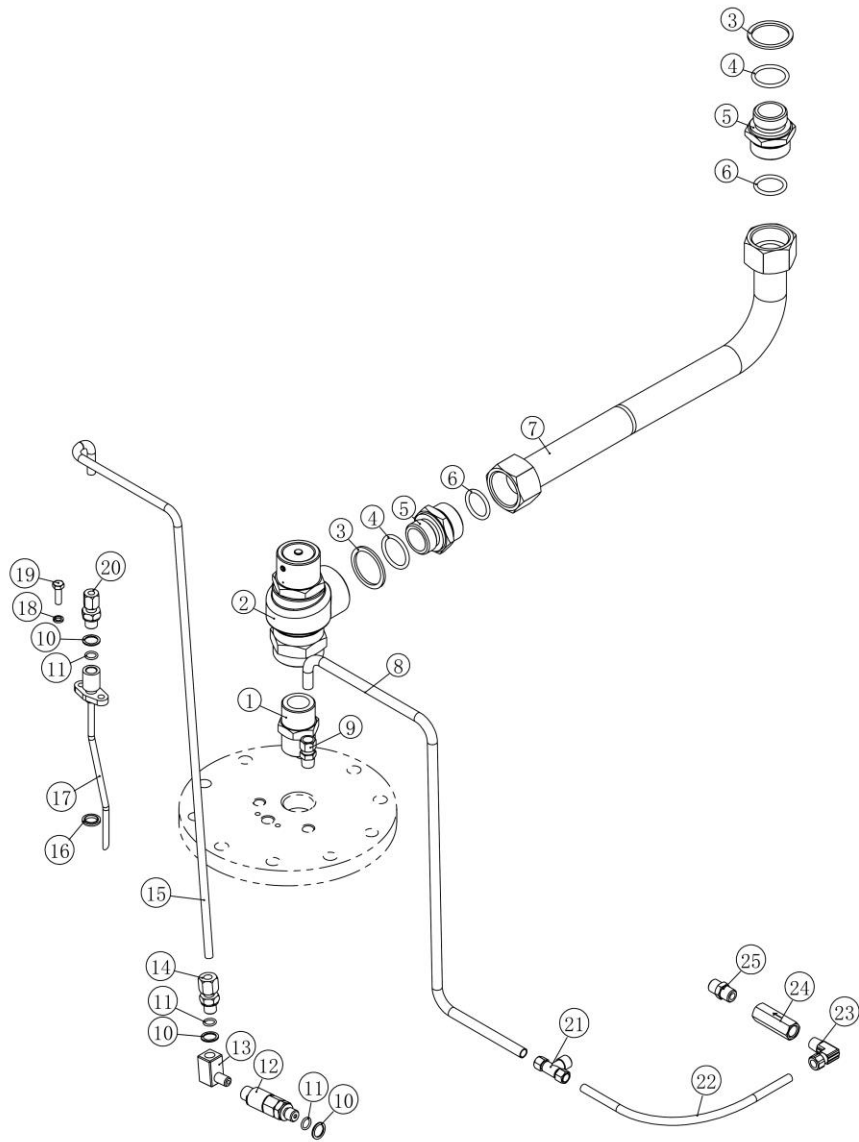
( 30HP )

NO.	PN	DESCRIPTION	QTY	REMARK
1	87433 06005 69	Oil pipe	1	
2	87433 06002 69	Oil pipe	1	
3	02901 01600 20	O-ring	7	16X2.65
4	13315 06009 09	Joint	6	
5	02201 00020 00	Screw washer	7	
6	02901 02360 20	O-ring	7	23.6X2.65
7	01611 02083 01	Thermal valve	1	
*7A	04004 20083 02	Thermal valve kit	1	O-ring 38x3, Valve element, Sleeve, Spring.
8	87433 06001 69	Oil filter support	1	
9	13333 06009 00	Connecting pipe	1	
10	87433 06004 69	Oil pipe	1	
11	87433 06003 69	Oil pipe	1	
12	01307 08020 00	Bolt	1	M8X20
13	01365 08000 00	Washer	1	8
14	07709 94172 00	Oil filter	1	
15	98018 07011 06	Joint	1	
16	01613 00600 99	Sample valve	1	

\*Note: Items not shown on the drawing.

# Air Piping

---



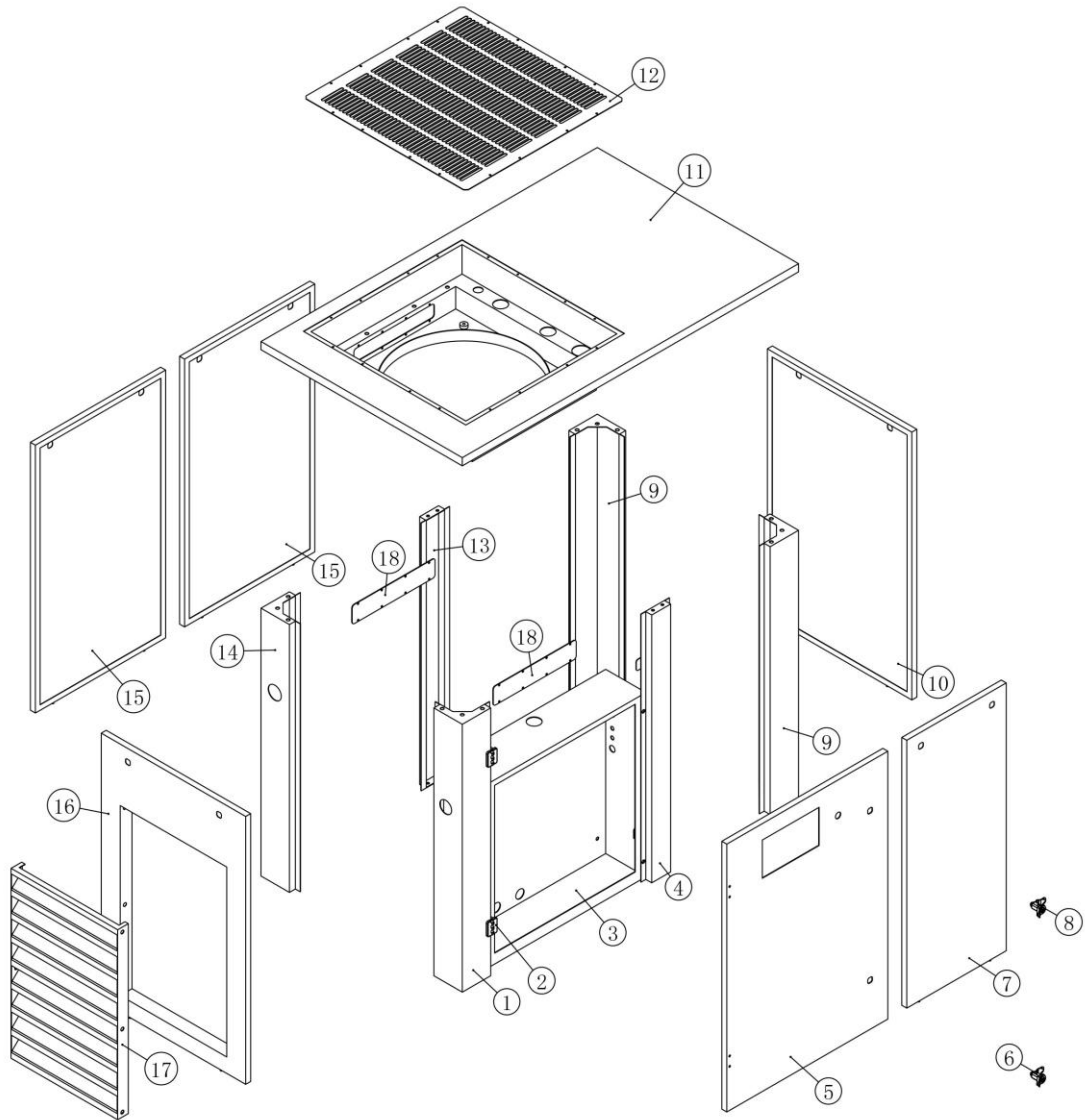
## Air Piping

( / )

NO.	PN	DESCRIPTION	QTY	REMARK
1	13315 07001 00	Joint	1	
2	01612 02503 00	MPV	1	
*2A	04006 02503 00	Kit for MPV	1	Check valve element, Spring A, Valve element, O-ring 25.07x2.62, O- ring 39x3, Spring B.
3	02201 00025 00	Screw washer	2	
4	02901 03000 30	O-ring	2	30X3.55
5	13315 07003 09	Joint	2	
6	02901 02580 30	O-ring	2	25.8X3.55
7	87433 07001 69	Discharge pipe	1	
8	87433 07003 69	Control pipe	1	
9	01511 10130 00	Joint	1	
10	02201 01215 00	Screw washer	3	
11	02901 00950 10	O-ring	3	9.5X1.8
12	01610 01010 01	Oil sight glass	1	
13	99131 07007 00	Elbow	1	
14	01523 08670 00	Joint	1	
15	87433 07002 69	Oil return pipe	1	
16	01534 12000 00	Bond washer	1	12
17	87433 07004 69	Connecting pipe	1	
18	01365 06000 00	Washer	1	6
19	01307 06020 00	Bolt	1	M6X20
20	01523 06670 01	Joint	1	
21	01516 08130 00	Tee joint	1	
22	02917 08020 00	Nylon pipe	1	
23	01610 02000 03	Check valve	1	2-RP1/4
24	98018 07011 00	Joint	1	
25	01517 08130 00	Joint	1	

\*Note: Items not shown on the drawing.

## Cabinet(Fixed speed)





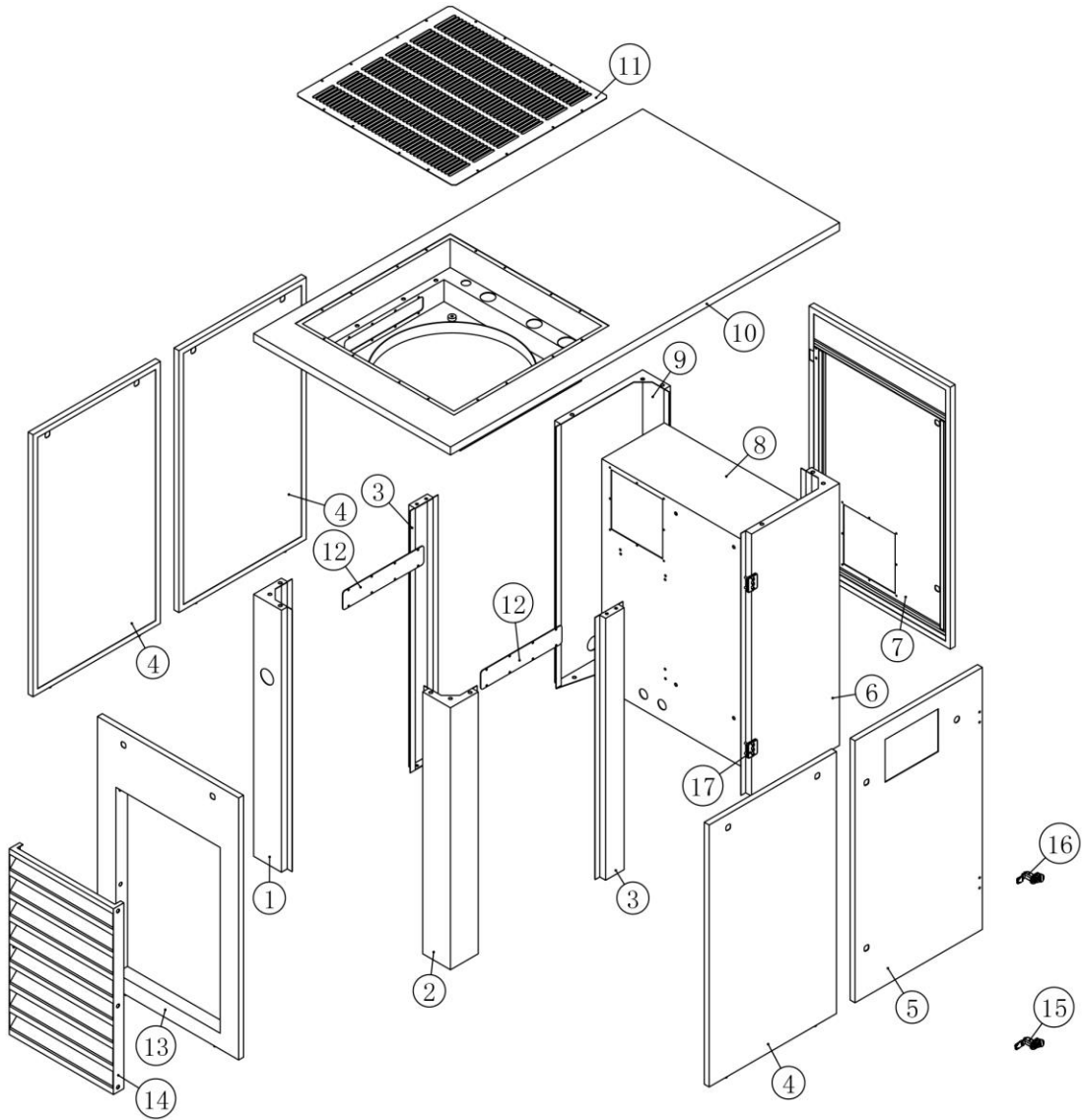
## Cabinet(Fixed speed)

(GROUP PN: )

---

NO.	PN	DESCRIPTION	QTY	REMARK
1	87433 08001 69	Support	1	
2	02702 20901 00	Hinge	2	
3	87433 08007 69	Electrical cabinet	1	
4	87433 08004 69	Support	1	
5	87433 08002 69	Door	1	
6	02702 71111 01	Lock	1	H33
7	87433 08005 69	Door	1	
8	02702 71111 01	Lock	11	H25
9	87433 08120 69	Support	2	
10	87433 08006 69	Door	1	
11	87433 08100 69	Top cover	1	
12	99086 08120 00	Top net cover	1	
13	87433 08110 69	Support	1	
14	87433 08009 69	Support	1	
15	87433 08003 69	Door	2	
16	87433 08008 69	Door	1	
17	13330 08001 00	Air deflector	1	
18	12316 08005 11	Maintenance cover	2	

# Cabinet(VSD)



## Cabinet(VSD)

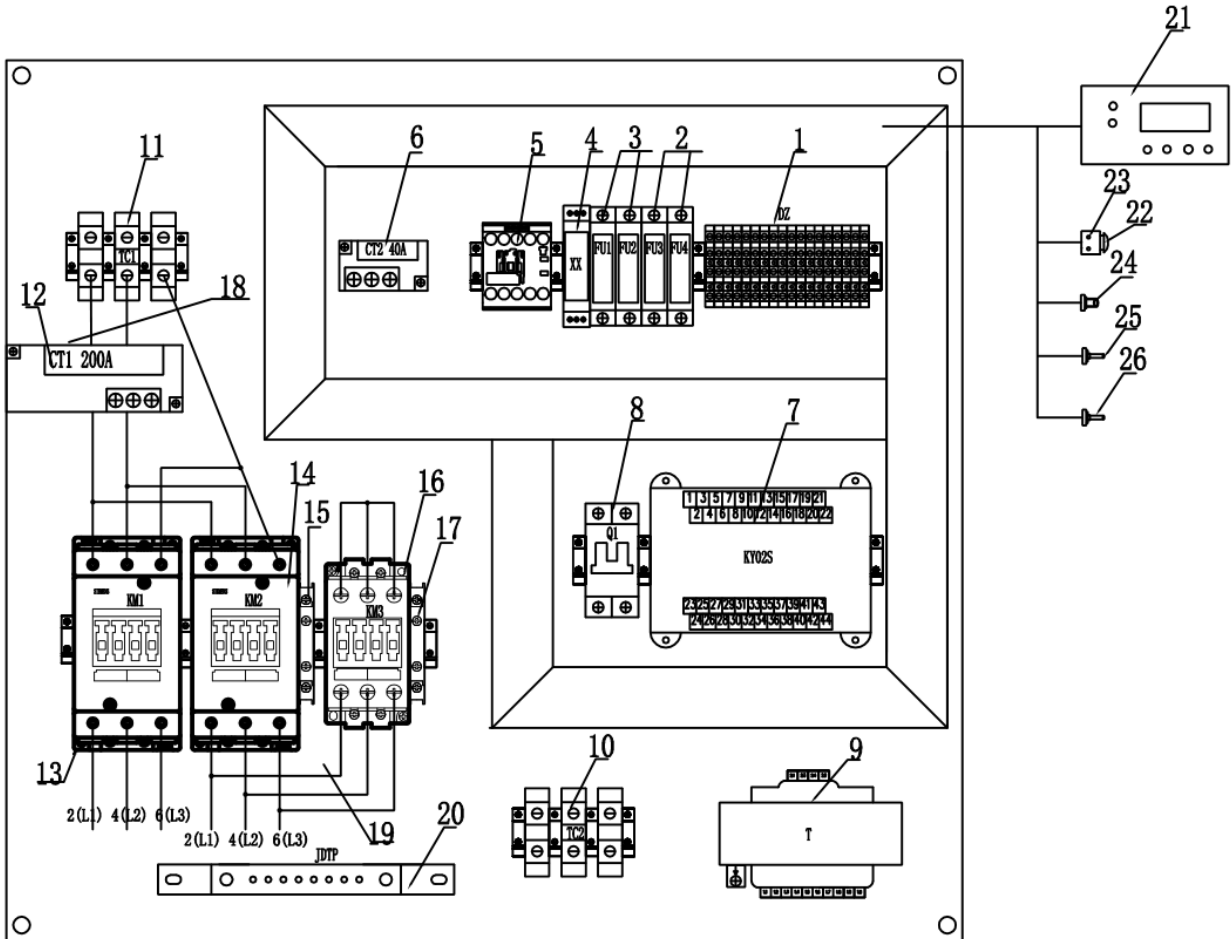
(GROUP PN: )

---

NO.	PN	DESCRIPTION	QTY	REMARK
1	87433 08009 69	Support	1	
2	87244 08001 09	Support	1	
3	87433 08110 69	Support	2	
4	87433 08003 69	Door	3	
5	87244 08002 09	Door	1	
6	87244 08120 09	Support	1	
7	87244 08006 09	Door	1	
8	87244 08007 09	Electrical cabinet	1	
9	87244 08130 09	Support	1	
10	87244 08100 09	Top cover	1	
11	99086 08120 00	Top net cover	1	
12	12316 08005 11	Maintenance cover	2	
13	87433 08008 69	Door	1	
14	13330 08001 00	Air deflector	1	
15	02702 71111 01	Lock	1	H33
16	02702 71111 01	Lock	11	H25
17	02702 20901 00	Hinge	2	
	07706 98052 00	Electrical cabinet inlet filter frame	1	
	07211 22081 40	Electrical cabinet fan	1	
	160004-001	Filter element		

# Electrical Enclosure(Fixed speed)

( 208V/230V/460V )



## Electrical Enclosure(Fixed speed)

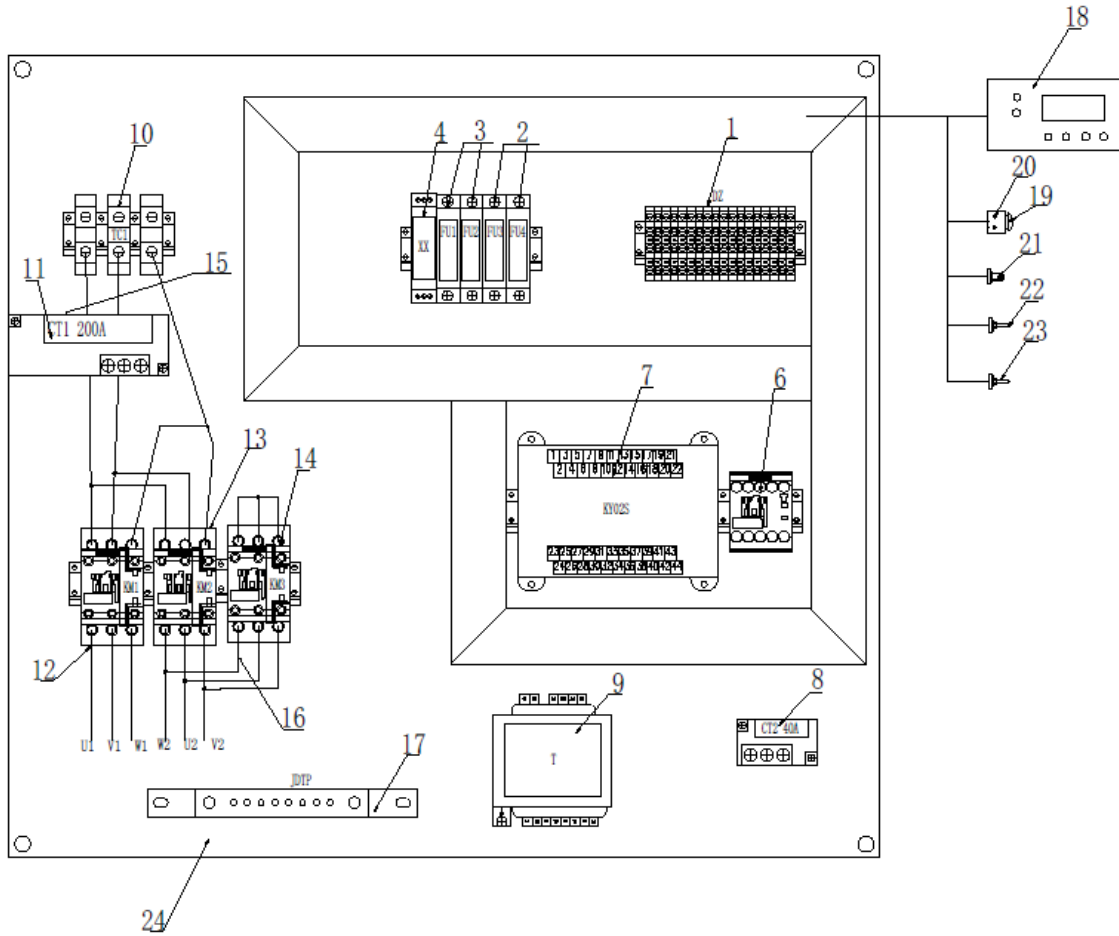
(208V/230V/460V)

NO.	PN	DESCRIPTION	QTY	REMARK
1	08703 00004 00	Terminal block	18	DZ
2	02820 00001 00	Fuse block	2	FU1-FU2
3	02820 00001 00	Fuse block	2	FU3-FU4
4	02814 00080 00	Phase protector	1	XX
5	02825 60038 00	Fan motor contactor	1	KM4
6	02824 20040 00	Fan motor transformer	1	CT2
7	02811 00210 55	Controller	1	PLC
8	02819 06526 00	Miniature circuit breaker	1	Q1
9	02818 03150 10	Transformer	1	T
10	08703 00035 00	Terminal block	3	TC2
11	08703 00035 00	Terminal block	3	TC1
12	02824 00200 00	Motor transformer	1	CT1
13	02825 60065 01	AC contactor	1	KM1
14	02825 60065 01	AC contactor	1	KM2
15	08705 35921 11	Auxiliary contact	1	FZ
16	02825 60050 01	AC contactor	1	KM3
17	08705 35921 11	Auxiliary contact	1	FZ
18	08704 04025 00	Cable	0.9M	BVR
19	08704 06016 00	Cable	1.2M	BVR
20	02829 32020 60	Grounding copper bar	1	JDTP
21	02815 00202 02	Monitor	1	XSQ
22	02827 04844 00	Emergency button	1	JT
23	02827 04104 00	Emergency button support	1	JT
24	02810 00016 00	Pressure sensor	1	DP
25	02810 10004 00	Temperature sensor	1	DT
26	02810 10004 00	Temperature sensor	1	ST
*27	02821 10004 00	Fuse	2	FU1-FU2
*28	02821 10002 00	Fuse	2	FU3-FU4

Note: \* Items are not shown on the drawing.

# Electrical Enclosure(Fixed speed)

( 575V/25HP )



## Electrical Enclosure(Fixed speed)

( 575V/25HP )

NO.	PN	DESCRIPTION	QTY	REMARK
1	08703 00004 00	Terminal block	18	DZ
2	02820 00001 00	Fuse block	2	FU1-FU2
3	02820 00001 00	Fuse block	2	FU3-FU4
4	02814 05169 00	Phase sequence protector	1	XX
6	02825 60038 00	Fan motor contactor	1	KM4
7	02811 00210 55	Controller	1	PLC
8	02824 20040 00	Fan motor transformer	1	CT2
9	02818 01000 10	Transformer	1	T
10	08703 00035 00	Terminal block	3	TC1
11	02824 00200 00	Motor transformer	1	CT1
12	02825 60032 01	AC contactor	1	KM1
13	02825 60032 01	AC contactor	1	KM2
14	02825 60025 01	AC contactor	1	KM3
15	08704 08010 00	Cable	0.9M	BVR
16	08704 08006 00	Cable	1.2M	BVR
17	02829 32020 60	Grounding copper bar	1	JDTP
18	02815 00202 02	Monitor	1	XSQ
19	02827 04844 00	Emergency stop button	1	JT
20	02827 04104 00	Emergency stop button seat	1	JT
21	02810 00016 00	Pressure sensor	1	DP
22	02810 10004 00	Temperature sensor	1	DT
23	02810 10004 00	Temperature sensor	1	ST
24		Electric control board	1	DKB
*25	02821 10004 00	Fuse	2	FU1-FU2
*26	02821 10002 00	Fuse	2	FU3-FU4

Note: \* Items are not shown on the drawing.





## Electrical Enclosure(Fixed speed)

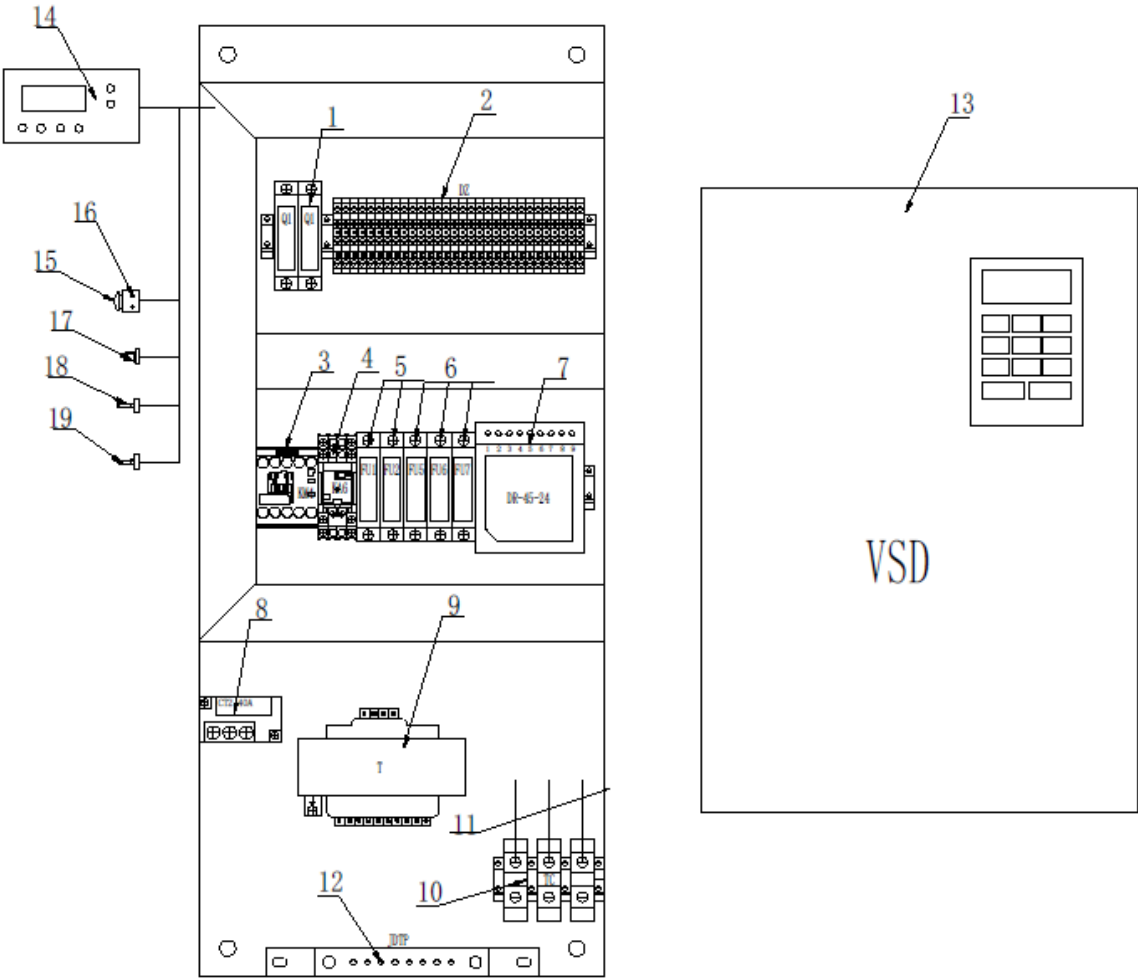
( 575V/30HP )

NO.	PN	DESCRIPTION	QTY	REMARK
1	08703 00004 00	Terminal block	18	DZ
2	02820 00001 00	Fuse block	2	FU1-FU2
3	02820 00001 00	Fuse block	2	FU3-FU4
4	02814 05169 00	Phase sequence protector	1	XX
6	02825 60038 00	Fan motor contactor	1	KM4
7	02811 00210 55	Controller	1	PLC
8	02824 20040 00	Fan motor transformer	1	CT2
9	02818 01000 10	Transformer	1	T
10	08703 00035 00	Terminal block	3	TC1
11	02824 00200 00	Motor transformer	1	CT1
12	02825 60040 01	AC contactor	1	KM1
13	02825 60040 01	AC contactor	1	KM2
14	08705 35921 11	Auxiliary contact	1	FZ
15	02825 60025 01	AC contactor	1	KM3
16	08704 06016 00	Cable	0.9M	BVR
17	08704 08010 00	Cable	1.2M	BVR
18	02829 32020 60	Grounding copper bar	1	JDTP
19	02815 00202 02	Monitor	1	XSQ
20	02827 04844 00	Emergency stop button	1	JT
21	02827 04104 00	Emergency stop button seat	1	JT
22	02810 00016 00	Pressure sensor	1	DP
23	02810 10004 00	Temperature sensor	1	DT
24	02810 10004 00	Temperature sensor	1	ST
25	08703 00004 00	Terminal block	3	DZ1
26		Electric control board	1	DKB
*27	02821 10004 00	Fuse	2	FU1-FU2
*28	02821 10002 00	Fuse	2	FU3-FU4

Note: \* Items are not shown on the drawing.

# Electrical Enclosure(VSD)

( 575V/25HP/Eaton )



## Electrical Enclosure(VSD)

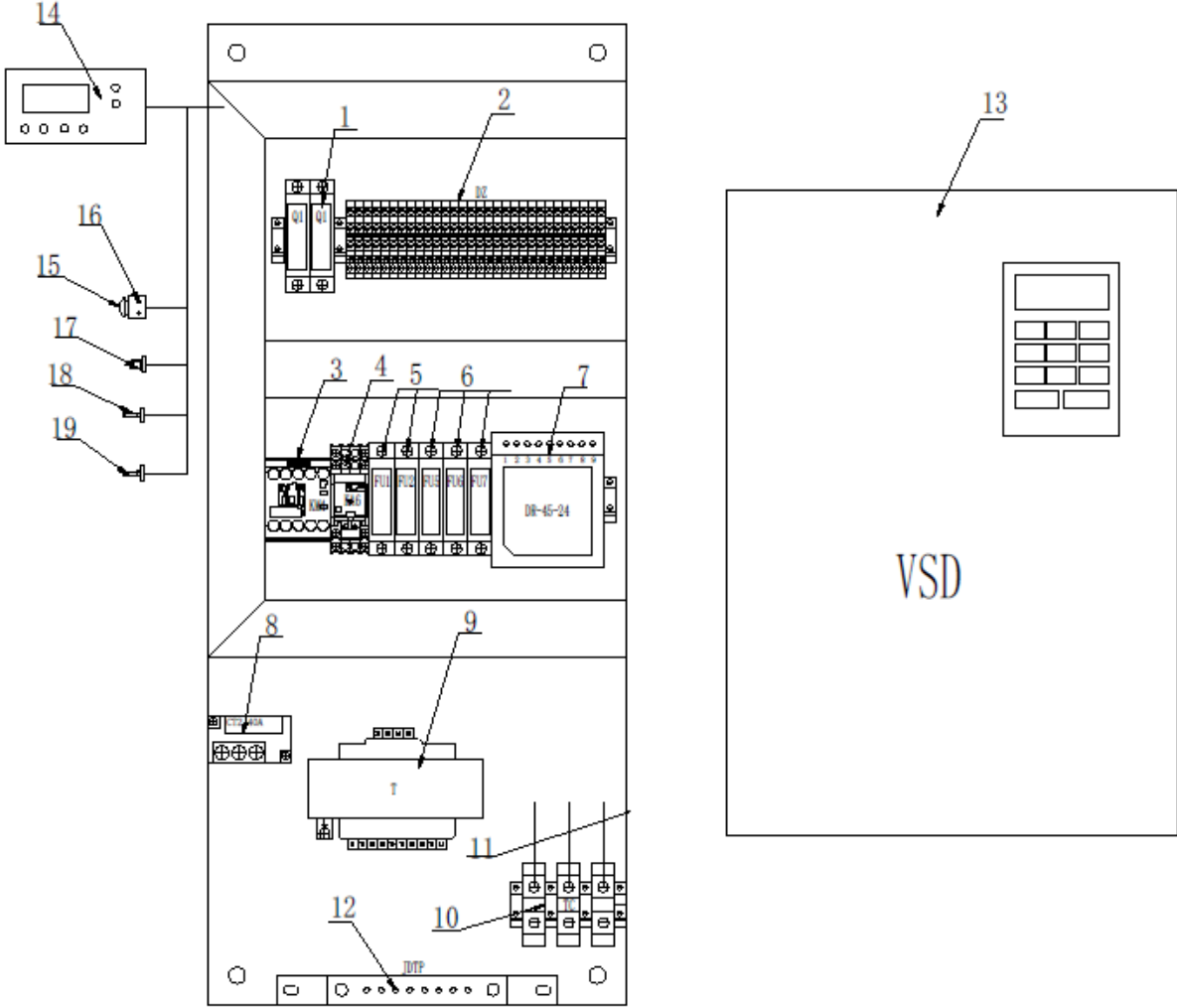
( 575V/25HP/Eaton )

NO.	PN	DESCRIPTION	QTY	REMARK
1	02820 00001 00	Fuse block	2	Q1
2	08703 00004 00	Terminal block	31	DZ
3	02825 60038 00	Fan motor contactor	1	KM4
4	02814 00002 00	Intermediate relay seat	1	KA6
	02814 01102 00	Intermediate relay	1	
5	02820 00001 00	Fuse	2	FU1-FU2
6	02820 00001 00	Fuse block	3	FU5-FU7
7	02808 04524 00	Power switch	1	DR
8	02824 20040 00	Fan motor transformer	1	CT2
9	02818 03150 10	Transformer	1	T
10	08703 00035 00	Terminal block	3	TC
11	08704 06016 00	Cable	1.8M	BVR
12	02829 32020 60	Grounding copper bar	1	JDTP
13	02828 35034 00	VSD	1	VSD
14	02811 15194 37	Monitor	1	XSQ
15	02827 04844 00	Emergency stop button	1	JT
16	02827 04104 00	Emergency stop button seat	1	JT
17	02810 00016 00	Pressure sensor	1	DP
18	02810 10004 00	Temperature sensor	1	DT
19	02810 10004 00	Temperature sensor	1	ST
20		Electric control board	1	DKB
*21	02821 10006 00	Fuse	2	FU1-FU2
*22	02821 10002 00	Fuse	3	FU5-FU7
*23	02821 10006 00	Fuse	2	Q1

Note: \* Items are not shown on the drawing.

# Electrical Enclosure(VSD)

( 575V/30HP/Eaton )



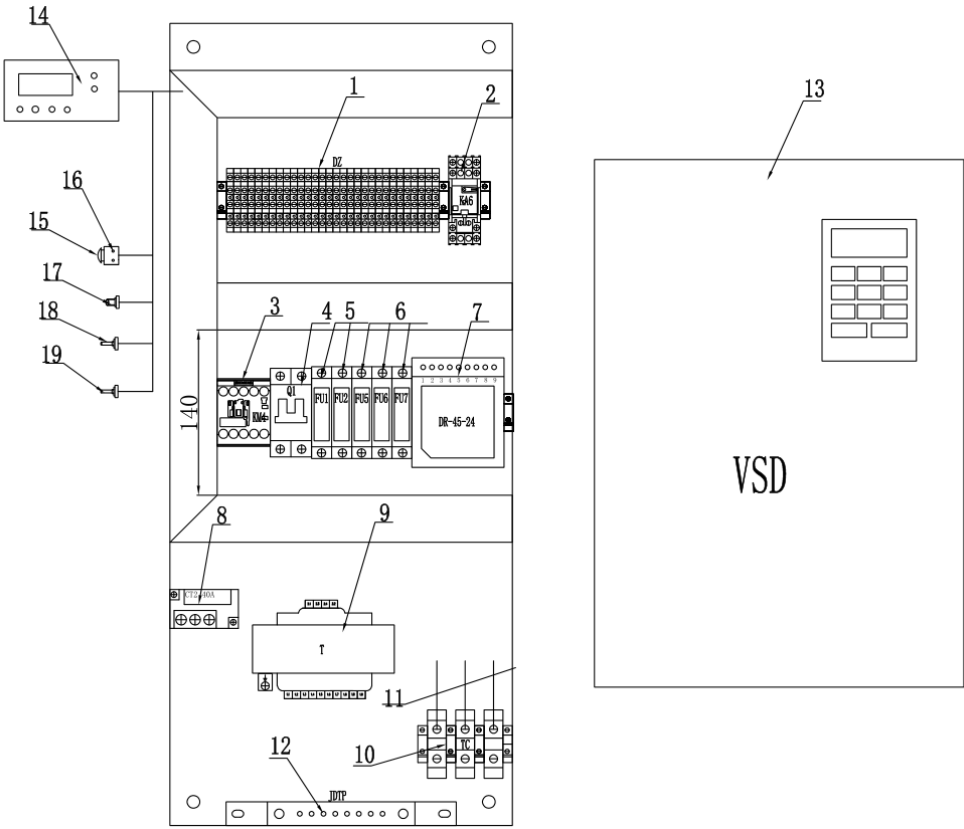
## Electrical Enclosure(VSD)

( 575V/30HP/Eaton )

NO.	PN	DESCRIPTION	QTY	REMARK
1	02820 00001 00	Fuse block	2	Q1
2	08703 00004 00	Terminal block	31	DZ
3	02825 60038 00	Fan motor contactor	1	KM4
4	02814 00002 00	Intermediate relay seat	1	KA6
	02814 01102 00	Intermediate relay	1	
5	02820 00001 00	Fuse	2	FU1-FU2
6	02820 00001 00	Fuse block	3	FU5-FU7
7	02808 04524 00	Power switch	1	DR
8	02824 20040 00	Fan motor transformer	1	CT2
9	02818 03150 10	Transformer	1	T
10	08703 00035 00	Terminal block	3	TC
11	08704 06016 00	Cable	1.8M	BVR
12	02829 32020 60	Grounding copper bar	1	JDTP
13	02828 35041 00	VSD	1	VSD
14	02811 15194 37	Monitor	1	XSQ
15	02827 04844 00	Emergency stop button	1	JT
16	02827 04104 00	Emergency stop button seat	1	JT
17	02810 00016 00	Pressure sensor	1	DP
18	02810 10004 00	Temperature sensor	1	DT
19	02810 10004 00	Temperature sensor	1	ST
20		Electric control board	1	DKB
*21	02821 10006 00	Fuse	2	FU1-FU2
*22	02821 10002 00	Fuse	3	FU5-FU7
*23	02821 10006 00	Fuse	2	Q1

Note: \* Items are not shown on the drawing.

# Electrical Enclosure(VSD)



## Electrical Enclosure(VSD)

(460V)

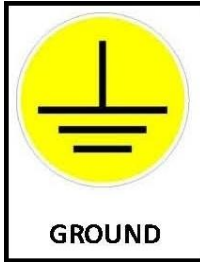
NO.	PN	DESCRIPTION	QTY	REMARK
1	08703 00004 00	Terminal block	30	DZ
2	02814 00002 00	Intermediate relay seat	1	KA6
	02814 01102 00	Intermediate relay head	1	
3	02825 60038 00	Fan motor contactor	1	KM4
4	02819 06526 00	Miniature circuit breaker	1	Q1
5	02820 00001 00	Fuse block	2	FU1-FU2
6	02820 00001 00	Fuse block	3	FU5-FU7
7	02808 04524 00	Power switch	1	DR
8	02824 20040 00	Fan motor transformer	1	CT2
9	02818 03150 10	Transformer	1	T
10	08703 00035 00	Terminal block	3	TC
11	08704 06016 00	Cable	1.8M	BVR
12	02829 32020 60	Grounding copper bar	1	JDTP
13	02828 50058 00	VSD	1	VSD
14	02811 15151 47	Monitor	1	XSQ
15	02827 04844 00	Emergency button	1	JT
16	02827 04104 00	Emergency button support	1	JT
17	02810 00016 00	Pressure sensor	1	DP
18	02810 10004 00	Temperature sensor	1	DT
19	02810 10004 00	Temperature sensor	1	ST
*20	02821 10006 00	Fuse	2	FU1-FU2
*21	02821 10002 00	Fuse	2	FU5-FU7

Note: \* Items are not shown on the drawing.

## Decals

---

Decals information is shown as following.





## Decals

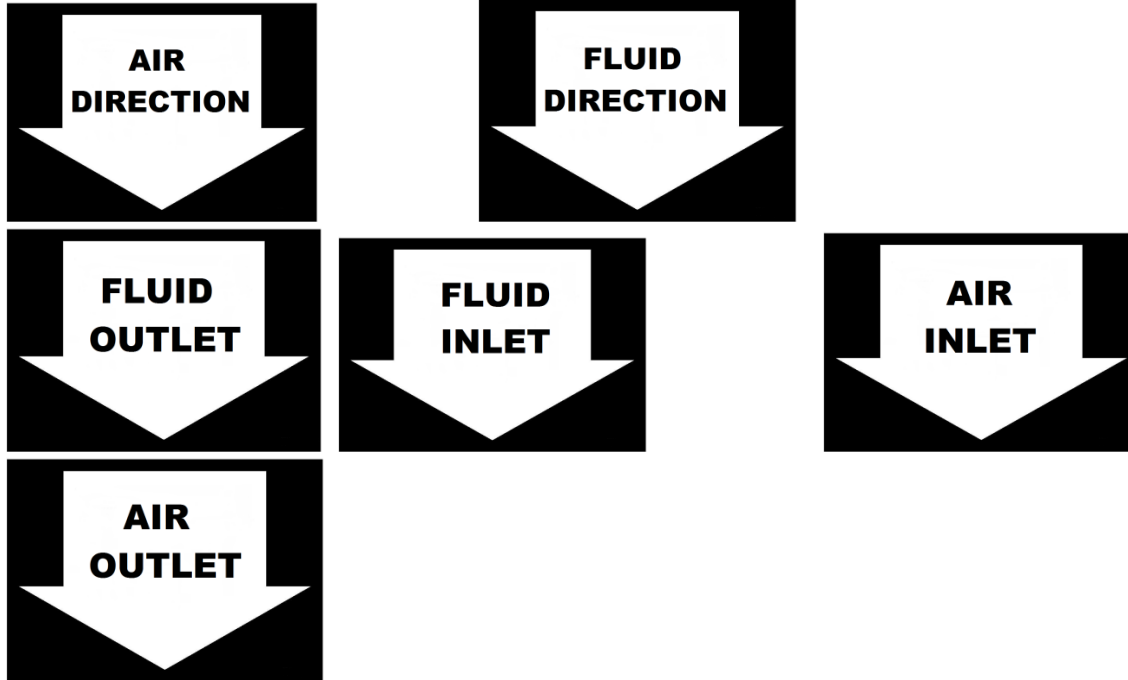


NOTE:

1. DECALS P/N : 142939

## Decals

---



NOTE:

1. DECALS P/N : 142939

## Standard Terms and Conditions

---

These terms and conditions govern the sale of Products (“Rotary Screw Air Compressors and parts”) and provisions of services by KCA (Seller) and its authorized representative or buyer. These terms and conditions (“Agreement”) take precedence over Buyer’s supplemental or conflicting terms and conditions to which notice of objection is hereby given. Neither Seller’s commencement of performance or delivery shall be deemed or construed as acceptance of Buyer’s supplemental or conflicting terms and conditions. KCA’s failure to object to conflicting or additional terms will not change or add to the terms of this agreement. Buyer’s acceptance of the Products and/or Services from Seller shall be deemed to constitute acceptance of the terms and conditions contained herein.

**Orders:** All orders placed by Buyer are subject to acceptance by Seller. Orders may not be canceled or rescheduled without Seller’s written consent. All orders must identify the products, unit quantities, part numbers, applicable prices and requested delivery dates of the Products being purchased. Seller may at its sole discretion allocate Product among its Buyer. Seller may designate certain Products and Services as non-cancelable, non-returnable and the sale of such Products shall be subject to the special terms and conditions contained in Seller’s Customer Acknowledgement or Non-Returnable Product Form, which shall prevail and supersede any inconsistent terms and conditions contained herein or elsewhere.

**Prices:** The prices of the Products are those prices specified on the front of the invoice or contained within an agreed written contract. Price quotations shall automatically expire in thirty (30) days from the date issued, or as otherwise stated in the quotation.

**Taxes:** Unless otherwise agreed to in writing by Seller, all prices quoted are exclusive of transportation and insurance costs, duties, and all taxes including federal, state and local sales, excise and value added, goods and services taxes, and any other taxes. Buyer agrees to indemnify and hold Seller harmless for any liability for tax in connection with the sale, as well as the collection or withholding thereof, including penalties and interest thereon. When applicable, transportation and taxes shall appear as separate items on Seller’s invoice.

**Payment:** Payment may be made by check, money order, credit card, or wire transfer (all fees are borne by the Buyer). Where Seller has extended credit to Buyer, terms of payment shall be net thirty (30) days from date of invoice, without offset or deduction. On any past due invoice, Seller may impose a monthly interest rate. If Buyer fails to make the required payments the Seller will impose the interest rate each month. If Buyer fails to make each payment when it is due, Seller reserves the right to withdraw credit and thereby suspend or cancel performance under any or all purchase orders or agreements in which Seller has extended credit to Buyer. In the event of default by Buyer, Seller shall be entitled to costs, fees, and expenses including but not limited to recovery of attorney fees, court costs and fees, and collections costs.

## Standard Terms and Conditions

---

**Delivery and Title:** The locations of shipment delivery will be made according to the Seller and Buyer agreement. Title and risk of loss pass to the Buyer upon delivery of the Product to the carrier. Seller's delivery dates are estimates only and Seller is not liable for delays in delivery or for failure to perform due to causes beyond the reasonable control of the Seller, nor shall the carrier be deemed an agent of the Seller. A delayed delivery of any part of an Order does not entitle Buyer to cancel other deliveries. KCA will comply with various federal, state and local laws and regulation concerning occupational health, safety and environment concerns. Buyer has full responsibility to comply with those laws and regulations during the installation and operation of the equipment.

**Acceptance / Returns:** Shipments will be deemed to have been accepted by Buyer upon delivery of the said shipments to Buyer unless rejected upon receipt. Buyer shall perform all inspections and tests. Buyer deems necessary as promptly as possible but in no event later than 7 days after receipt of Products, at which time Buyer will be deemed to have irrevocably accepted the Products. Any discrepancy in shipment quantity must be reported within 7 days after receipt of Products. Buyer may not return Products without a Return Material Authorization ("RMA") number. RMA's valid for 30 days from the date issued.

**Standard Warranty:** Buyer will honor Product warranties and indemnities authorized by the manufacturer, including any transferable. 90 days warranty is given for service parts from receipt date. Seller warrants to Buyer that Products purchased hereunder will conform to the applicable manufacturer's specifications for such products and that any value-added work performed by Seller on such Products will conform to applicable Buyer's specifications. If Seller breaches this warranty, Buyer's remedy is limited to (at Seller's election) (1) refund of Buyer's purchase price for such Product (without interest), (2) repair of such Products, or (3) replacement of such Products provided that such Products must be returned to Seller, along with acceptable evidence of purchase within 13 days from date of delivery, transportation charges prepaid. No warranty will apply if the Product has been subject to misuse, neglect, accident or modification.

**Limitation of Liabilities:** Buyer shall not be entitled to, and Seller shall not be liable for, loss of profit or revenue, promotional or manufacturing expenses, overheads expenses, business interruption cost, loss of data, removal or reinstallation costs, injury to reputation of buyer, punitive damages, loss of contractor orders or any indirect, special, incidental or consequential damages of any nature. Buyer's recovery from seller for any claim shall not exceed the purchase price paid for the affected products irrespective of the nature of the claim whether in contract, tort, warranty, or otherwise. Buyer will indemnify, defend and hold seller harmless from any claims based on (a) Seller's compliance with buyer's designs, specifications, or instructions, (b) Modification of any products by anyone other than Seller, or (c) use in combination with other products not supplied by seller.

## Standard Terms and Conditions

---

**Use of Products:** Unless otherwise specified. Products sold by Seller are not designed, intended or authorized for use in life support, life sustaining, nuclear, or other applications in which the failure of such Products could reasonably be expected to result in personal injury, loss of life or catastrophic property damage. If buyer uses or sales the Products for use in any such applications: (1) Buyer acknowledges that such use or sale is at Buyer's sole risk; (2) Buyer agrees that Seller and the manufacturer of the Products are not liable, in whole or in part, for any claim or damage arising from such use; and (3) Buyer agrees to indemnify, defend and hold Seller and the manufacturer of the Products harmless from and against any and all claims, damages, losses, costs, expenses and liabilities arising out of or in connection with such use or sale.

**Force Majeure:** Seller is not liable for failure to fulfill its obligations for any accepted Order or for delays in delivery due to causes beyond Seller's reasonable control including, but not limited to, acts of God, natural or artificial disaster, riot, war, strike, delay by carrier, shortage of Product, acts or omissions of other parties, acts or omissions of civil or military authority, Government priorities, changes in law, material shortages, fire, strikes, floods, epidemics, quarantine restrictions, acts of terrorism, delays in transportation or inability to obtain labor, materials or products through its regular sources, which shall be considered as an event of force majeure excusing Seller from performance and barring remedies for non-performance. In an event of force majeure condition, the Seller's time for performance shall be extended for a period equal to the time lost as a consequence of the force majeure condition without subjecting Seller to any liability or penalty. Seller may, at its option, cancel the remaining performance, without any liability or penalty, by giving notice of such cancellation to the Buyer.

**General:** (a) Seller will comply with state law for any dispute from buyer. (b) Buyer may not assign this Agreement without the prior written consent of Seller. Seller or its affiliates may perform the obligations under this Agreement. This Agreement is binding on successor and assigns, (c) Products, including software or other intellectual property, are subject to any applicable rights of third parties, such as patents, copyrights and/or user licenses.

## Appendix

*(If your machine is standard, this page is blank.)*

## Contact Information

---

Kaishan Compressor, LLC.,  
Add.: 15445 Industrial Park Dr. Loxley, AL, Post code: 36551  
Office number: +1 251-202-0577  
[www.KaishanUSA.com](http://www.KaishanUSA.com)