



# Rotary Screw Compressors

Air. Anytime. Anywhere

The next generation of low and maintenance-free  
compressed air solutions.



# Rotary screw compressors

Increased performance, reduced energy consumption. Legendary reliability.



## Key features

- ▶ Market leading power and technology
- ▶ High performance with low energy consumption
- ▶ Smart and reliable digital controller
- ▶ User friendly operation
- ▶ Low noise and vibration levels

**The ABAC Rotary Screw Compressor is an ideal solution for automotive and industrial applications where there is continuous demand for dependable compressed air.**



**Automotive applications**



**Industrial applications**

# AS-D 3



## AS 3D overview

- ▶ Superior performance and efficiency over belt-drive piston compressors
- ▶ Compact and low profile design
- ▶ Quick, easy, and cost-effective maintenance
- ▶ Reduced energy costs and CO<sub>2</sub> emissions
- ▶ Quiet operation, as low as 59 dB(A)

## Key features

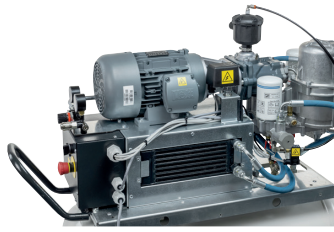
- ▶ New innovative screw technology with fully integrated aluminum block
- ▶ 130 psi maximum pressure
- ▶ Plug-and-play operation
- ▶ Direct Drive Transmission is highly reliable and easy to maintain
- ▶ Optimized cooling system



Easy maintenance



Portable



New integrated block



## Applications

Suitable for professional applications from wood/metalworking to auto body repair, as well as general use with a wide range of pneumatic tools.



Hammering



Air / water spraying



Grinding



Precision assembly



Fastening



Orbital sanding



Model	Part Number	Gal	HP	Max PSI	Power Supply (V/Ph/Hz)	CFM*	dB(A)	Lb.	L x W x H (in)
AS-3D124W	4152044109	24	3	130	230/1/60	11.3	59	260	44 x 19 x 43
AS-3D152W	4152044110	52	3	130	230/1/60	11.3	59	363	56 x 24 x 50
AS-3D152	4152044111	52	3	130	230/1/60	11.3	59	363	56 x 18 x 46
AS-3D324W	4152044112	24	3	130	230/3/60	11.3	59	260	44 x 19 x 43
AS-3D352W	4152044113	52	3	130	230/3/60	11.3	59	363	56 x 24 x 50
AS-3D352	4152044114	52	3	130	230/3/60	11.3	59	363	56 x 18 x 46



\* Unit performance measured according to ISO1217, Annex C, CFM figures quoted at 123 PSI.  
 \*\* Noise level measured according to ISO 2151:2004 using ISO 9614/2 (sound intensity method).

# AS-B 5-20 HP



## Applications

Suitable for professional and industrial applications needing a reliable and continuous air supply, where operating conditions are challenging.



Heavy assembly

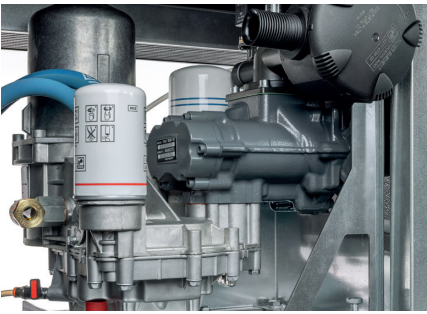


Production line assembly



Cleaning and preparation





Oil filtration



Oil level check



Easy maintenance

## AS-B 5-20 HP overview

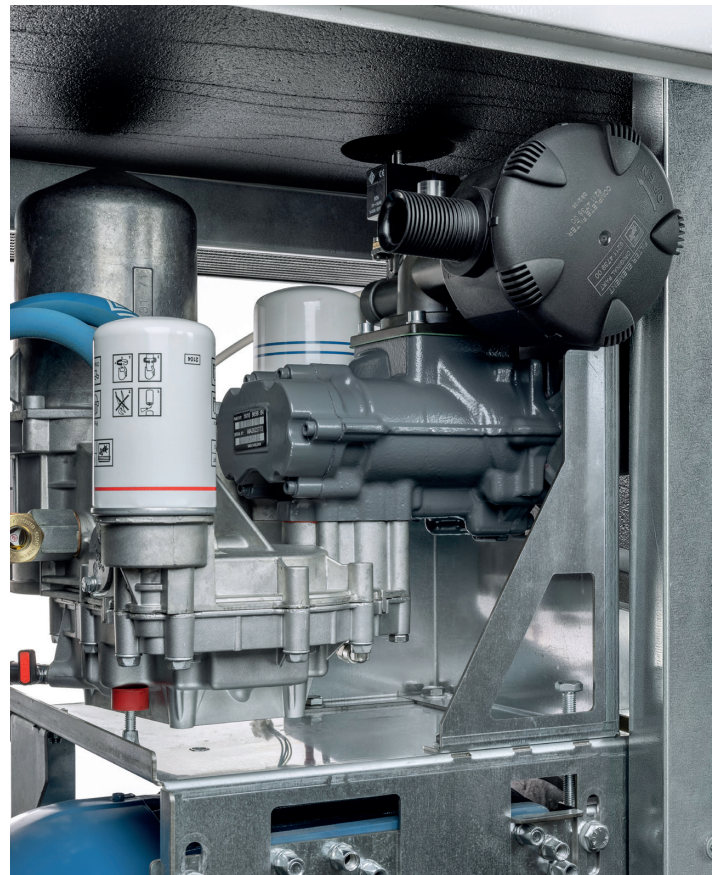
- ▶ 3-in-1 system including compressor, dryer and receiver
- ▶ Low oil consumption and CO<sub>2</sub> emissions
- ▶ Eco friendly vertical oil separation technology

## Key features

- ▶ Fully integrated aluminum block
- ▶ Limited air losses due to compact size and advanced design
- ▶ Energy efficient motor
- ▶ Intuitive digital controller
- ▶ Simple, quick, and easy maintenance

## AS-B 5-20 HP innovation

- ▶ New integrated block: innovative design made of aluminum
- ▶ Vertical oil separation
- ▶ Reduced risk of condensation build up and corrosion



# AS-B 5-7.5 HP



Model	Part Number	Gal	HP	PSI	Power Supply (V)	CFM*	dB(A)	Lb.	L x W x H (in)
<b>5 HP</b>									
AS-5251BM	4152044115	BM	5	125	230/1/60	20.3	63	335	32 x 24 x 40
AS-5253BM	4152043883	BM	5	125	208-230-460/3/60	20.3	63	335	32 x 24 x 40
AS-5501BM	4152044116	BM	5	150	230/1/60	17.4	63	335	32 x 24 x 40
AS-5503BM	4152043884	BM	5	150	208-230-460/3/60	17.4	63	335	32 x 24 x 40
AS-5251TM	4152044119	71	5	125	230/1/60	20.3	63	485	56 x 23 x 55
AS-5253TM	4152043889	71	5	125	208-230-460/3/60	20.3	63	485	56 x 23 x 55
AS-5501TM	4152044120	71	5	150	230/1/60	17.4	63	485	56 x 23 x 55
AS-5503TM	4152043890	71	5	150	208-230-460/3/60	17.4	63	485	56 x 23 x 55
AS-5251TMD	4152044125	71	5	125	230/1/60	20.3	63	571	56 x 23 x 55
AS-5253TMD	4152043899	71	5	125	208-230-460/3/60	20.3	63	571	56 x 23 x 55
AS-5501TMD	4152044126	71	5	150	230/1/60	17.4	63	571	56 x 23 x 55
AS-5503TMD	4152043900	71	5	150	208-230-460/3/60	17.4	63	571	56 x 23 x 55
<b>7.5 HP</b>									
AS-7.5251BM	4152044117	BM	7.5	125	230/1/60	30.5	67	360	32 x 24 x 40
AS-7.5253BM	4152043885	BM	7.5	125	208-230-460/3/60	30.5	67	360	32 x 24 x 40
AS-7.5501BM	4152044118	BM	7.5	150	230/1/60	27.1	67	360	32 x 24 x 40
AS-7.5503BM	4152043886	BM	7.5	150	208-230-460/3/60	27.1	67	360	32 x 24 x 40
AS-7.5251TM	4152044121	71	7.5	125	230/1/60	30.5	67	507	60 x 23 x 57
AS-7.5253TM	4152043891	71	7.5	125	208-230-460/3/60	30.5	67	507	60 x 23 x 57
AS-7.5501TM	4152044122	71	7.5	150	230/1/60	27.1	67	507	60 x 23 x 57
AS-7.5503TM	4152043892	71	7.5	150	208-230-460/3/60	27.1	67	507	60 x 23 x 57
AS-7.5251TMD	4152044123	132	7.5	125	230/1/60	30.5	67	655	76 x 24 x 63
AS-7.5253TMD	4152043893	132	7.5	125	208-230-460/3/60	30.5	67	655	76 x 24 x 63
AS-7.5501TMD	4152044124	132	7.5	150	230/1/60	27.1	67	655	76 x 24 x 63
AS-7.5503TMD	4152043894	132	7.5	150	208-230-460/3/60	27.1	67	655	76 x 24 x 63
AS-7.5251TMD	4152044127	71	7.5	125	230/1/60	30.5	67	593	60 x 23 x 57
AS-7.5253TMD	4152043901	71	7.5	125	208-230-460/3/60	30.5	67	593	60 x 23 x 57
AS-7.5501TMD	4152044128	71	7.5	150	230/1/60	27.1	67	593	60 x 23 x 57
AS-7.5503TMD	4152043902	71	7.5	150	208-230-460/3/60	27.1	67	593	60 x 23 x 57
AS-7.5251TMD	4152044129	132	7.5	125	230/1/60	30.5	67	741	76 x 24 x 63
AS-7.5253TMD	4152043903	132	7.5	125	208-230-460/3/60	30.5	67	741	76 x 24 x 63
AS-7.5501TMD	4152044130	132	7.5	150	230/1/60	27.1	67	741	76 x 24 x 63
AS-7.5503TMD	4152043904	132	7.5	150	208-230-460/3/60	27.1	67	741	76 x 24 x 63



\* Unit performance measured according to ISO1217, Annex C, CFM figures quoted at 109 PSI for 125 PSI Max units and 138 PSI for 150 PSI Max units.  
 \*\* Noise level measured according to ISO 2151:2004 using ISO 9614/2 (sound intensity method).

# AS-B 10-20 HP



Model	Part Number	Gal	HP	PSI	Power Supply (V)	CFM*	dB(A)	Lb.	L x W x H (in)
<b>10 HP</b>									
AS-10253BM	4152043887	BM	10	125	208-230-460/3/60	36.4	69	419	32 x 24 x 40
AS-10503BM	4152043888	BM	10	150	208-230-460/3/60	34.1	69	419	32 x 24 x 40
AS-10253TM	4152043895	71	10	125	208-230-460/3/60	36.4	69	567	60 x 23 x 57
AS-10503TM	4152043896	71	10	150	208-230-460/3/60	34.1	69	567	60 x 23 x 57
AS-10253TMD	4152043897	132	10	125	208-230-460/3/60	36.4	69	714	76 x 24 x 63
AS-10503TMD	4152043898	132	10	150	208-230-460/3/60	34.1	69	714	76 x 24 x 63
AS-10253TMD	4152043905	71	10	125	208-230-460/3/60	36.4	69	653	60 x 27 x 57
AS-10503TMD	4152043906	71	10	150	208-230-460/3/60	34.1	69	653	60 x 27 x 58
AS-10253TMD	4152043907	132	10	125	208-230-460/3/60	36.4	69	800	76 x 27 x 62
AS-10503TMD	4152043908	132	10	150	208-230-460/3/60	34.1	69	800	76 x 27 x 62
<b>10S HP</b>									
AS-10S253BM	4152043909	BM	10S	125	208-230-460/3/60	39.8	65	450	37 x 28 x 40
AS-10S503BM	4152043910	BM	10S	150	208-230-460/3/60	35.6	65	450	37 x 28 x 40
AS-10S753BM	4152043911	BM	10S	175	208-230-460/3/60	29.9	65	450	37 x 28 x 40
AS-10S253TM	4152043918	132	10S	125	208-230-460/3/60	39.8	65	745	76 x 27 x 62
AS-10S503TM	4152043919	132	10S	150	208-230-460/3/60	35.6	65	745	76 x 27 x 62
AS-10S753TM	4152043920	132	10S	175	208-230-460/3/60	29.9	65	745	76 x 27 x 62
AS-10S253TMD	4152043927	132	10S	125	208-230-460/3/60	39.8	65	840	76 x 27 x 62
AS-10S503TMD	4152043928	132	10S	150	208-230-460/3/60	35.6	65	840	76 x 27 x 62
AS-10S753TMD	4152043929	132	10S	175	208-230-460/3/60	29.9	65	840	76 x 27 x 62
<b>15 HP</b>									
AS-15253BM	4152043912	BM	15	125	208-230-460/3/60	52.1	69	474	37 x 28 x 40
AS-15503BM	4152043913	BM	15	150	208-230-460/3/60	46.4	69	474	37 x 28 x 40
AS-15753BM	4152043914	BM	15	175	208-230-460/3/60	41.7	69	474	37 x 28 x 40
AS-15253TM	4152043921	132	15	125	208-230-460/3/60	52.1	69	772	76 x 27 x 62
AS-15503TM	4152043922	132	15	150	208-230-460/3/60	46.4	69	772	76 x 27 x 62
AS-15753TM	4152043923	132	15	175	208-230-460/3/60	41.7	69	772	76 x 27 x 62
AS-15253TMD	4152043930	132	15	125	208-230-460/3/60	52.1	69	866	76 x 27 x 62
AS-15503TMD	4152043931	132	15	150	208-230-460/3/60	46.4	69	866	76 x 27 x 62
AS-15753TMD	4152043932	132	15	175	208-230-460/3/60	41.7	69	866	76 x 27 x 62
<b>20 HP</b>									
AS-20253BM	4152043915	BM	20	125	208-230-460/3/60	60.6	71	516	37x28x40
AS-20503BM	4152043916	BM	20	150	208-230-460/3/60	54	71	516	37x28x40
AS-20753BM	4152043917	BM	20	175	208-230-460/3/60	48.5	71	520	37x28x40
AS-20253TM	4152043924	132	20	125	208-230-460/3/60	60.6	71	813	76x27x62
AS-20503TM	4152043925	132	20	150	208-230-460/3/60	54	71	813	76x27x63
AS-20753TM	4152043926	132	20	175	208-230-460/3/60	48.5	71	818	76x27x64
AS-20253TMD	4152043933	132	20	125	208-230-460/3/60	60.6	71	908	76x27x65
AS-20503TMD	4152043934	132	20	150	208-230-460/3/60	54	71	908	76x27x66
AS-20753TMD	4152043935	132	20	175	208-230-460/3/60	48.5	71	913	76x27x67

\*Unit performance measured according to ISO1217, AnnexC, CFM figures quoted for 10HP 109 PSI for 125 PSI Max units, for 10S-20HP CFM figures are quoted at free air delivery.

\*\* Noise level measured according to ISO 2151:2004 using ISO 9614/2 (sound intensity method).

# AS-B 20S-30 HP



## Applications

Suitable for demanding automotive and industrial applications needing a reliable and continuous air supply, where operating conditions are challenging.



Production line assembly



Heavy assembly



Hammering



Refinishing

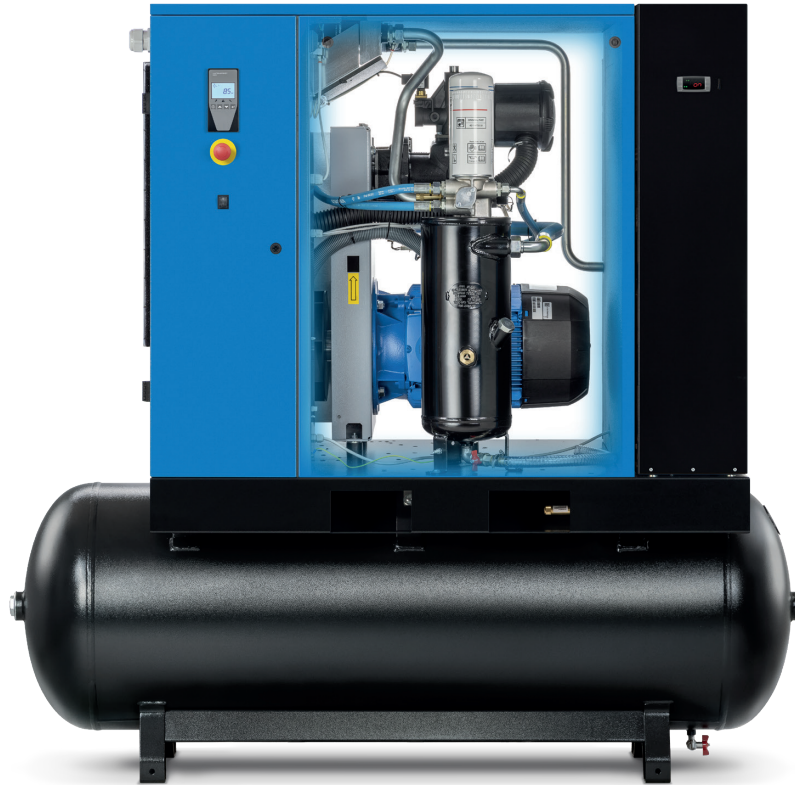


Grinding



Orbital sanding





## “The all-in-one compressor”— Compressor, Receiver & Dryer

- ▶ Eco-friendly vertical oil separation causing less damage to equipment
- ▶ Low noise and vibration levels
- ▶ Up to 10% lower carbon footprint
- ▶ Sturdy, reliable, compact design

## Screw compressor technology designed for industry

We continue to innovate our compressed air solutions to meet the demands of all areas of industry. The latest generation of rotary screw technology delivers enormous benefits with both noise and air quality vastly improved, especially for smaller working environments.

## Superior performance

Premium performance coupled with lower energy consumption, the AS series efficiently generates more air thanks to its superior technology and design.

## Improved duty cycle

While piston compressors require a cooldown period, rotary screw compressors can be used continuously, throughout the day, providing air on demand. ABAC rotary screw air compressors provide sustained and continuous work thereby improving productivity and efficiency.

## Minimal noise

Piston compressors are typically up to 20 dB(A) louder than rotary screw compressors. With the development of this new design, ABAC has significantly lowered noise and vibration levels.

## Cleaner air

With an oil carryover of less than 5ppm, our screw compressor range generates much cleaner air than piston compressors. This environmentally friendly solution also helps maintain high air quality, improving pneumatic tool life.

# AS-B 20S-30 HP

## Delivering the total compressed air solution



### Energy optimization

- ▶ Intuitive controller allows users to effortlessly optimize operating performance
- ▶ Displays running time and loaded time
- ▶ Service and failure warning
- ▶ Remote start-stop

### Air quality

- ▶ Highly efficient vertical 3-stage oil separation process
- ▶ Low pressure drop inside the dryer and receiver cuts down power consumption
- ▶ PDP around 37 °F
- ▶ Intelligent automatic drain ensures no air loss

### Options

- ▶ Food grade oil and coalescent filters

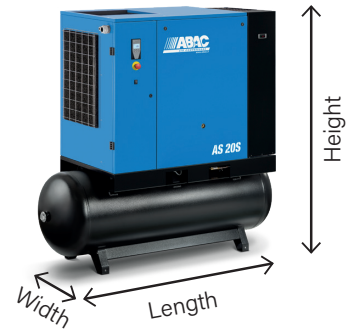




Model	Part Number	Gal	HP	PSI	Power Supply (V)	CFM	dB(A)	Lb.	L x W x H (in)
<b>20S HP</b>									
AS-20S253BM	4152028455	BM	20	125	208-230-460/3/60	81.9	67	690	44x31x49
AS-25S503BM	4152028456	BM	20	150	208-230-460/3/60	78	67	690	44x31x49
AS-20S253BMD	4152028461	BM	20	125	208-230-460/3/60	81.9	67	798	55x31x49
AS-20S503BMD	4152028462	BM	20	150	208-230-460/3/60	78	67	798	55x31x49
AS-20S253TMD	4152028467	132	20	125	208-230-460/3/60	81.9	67	1297	75x31x72
AS-20S503TMD	4152028468	132	20	150	208-230-460/3/60	78	67	1297	75x31x72
<b>25 HP</b>									
AS-25253BM	4152028457	125	BM	25	208-230-460/3/60	98.9	69	723	44 x 31 x 49
AS-25503BM	4152028458	150	BM	25	208-230-460/3/60	92.2	69	723	44 x 31 x 49
AS-25253BMD	4152028463	125	BM	25	208-230-460/3/60	98.9	69	831	55 x 31 x 49
AS-25503BMD	4152028464	150	BM	25	208-230-460/3/60	92.2	69	831	55 x 31 x 49
AS-25253TMD	4152028469	125	132	25	208-230-460/3/60	98.9	69	1330	75 x 31 x 72
AS-25503TMD	4152028470	150	132	25	208-230-460/3/60	92.2	69	1330	75 x 31 x 72
<b>30 HP</b>									
AS-30253BM	4152028459	125	BM	30	208-230-460/3/60	114.1	70	759	44 x 31 x 49
AS-30503BM	4152028460	150	BM	30	208-230-460/3/60	103.1	70	759	44 x 31 x 49
AS-30253BMD	4152028465	125	BM	30	208-230-460/3/60	114.1	70	867	55 x 31 x 49
AS-30503BMD	4152028466	150	BM	30	208-230-460/3/60	103.1	70	867	55 x 31 x 49
AS-30253TMD	4152028471	125	132	30	208-230-460/3/60	114.1	70	1365	75 x 31 x 72
AS-30503TMD	4152028472	150	132	30	208-230-460/3/60	103.1	70	1365	75 x 31 x 72

\* Unit performance measured according to ISO1217, Annex C, CFM figures quoted at 109 PSI for 125 PSI Max units and 138 PSI for 150 PSI Max units.

\*\* Noise level measured according to ISO 2151:2004 using ISO 9614/2 (sound intensity method).



**Contact an ABAC representative to  
find the right air compressor solution  
to fit your needs.**

Phone Number: +1 866 869 3114  
[abacaircompressors.com/en-us](http://abacaircompressors.com/en-us)

**ABAC Air Compressor USA**  
701 NORTH DOBSON AVE.  
BAY MINETTE, AL. 36507  
PHONE NUMBER: +1 866 869 3114

©ABAC 2022

THE CONTENTS OF THIS PUBLICATION ARE THE COPYRIGHT OF THE PUBLISHER AND MAY NOT BE REPRODUCED (EVEN EXTRACTS) UNLESS PRIOR WRITTEN PERMISSION IS GRANTED. EVERY CARE HAS BEEN TAKEN TO ENSURE THE ACCURACY OF THE INFORMATION CONTAINED IN THIS PUBLICATION BUT NO LIABILITY CAN BE ACCEPTED FOR ANY LOSS OR DAMAGE WHETHER DIRECT, INDIRECT OR CONSEQUENTIAL ARISING OUT OF THE USE OF THE INFORMATION CONTAINED HEREIN.

CERTAIN IMAGE(S) USED UNDER LICENSE FROM SHUTTERSTOCK.COM.

