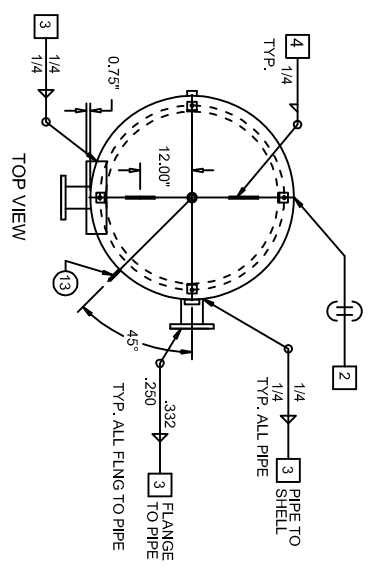
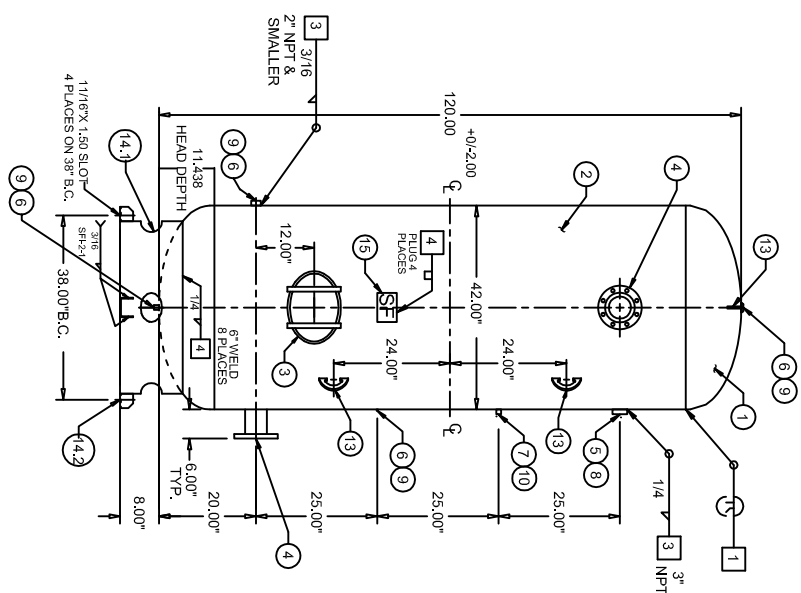


01	UPDATED PRINT	DESCRIPTION	DN	DATE	BY
				10/28/12	FA



#14 188 X 48" X 11'-1 1/2" (4 TO 1)

STD 680 GAL. INDUSTRIAL REC. SHIPPING WEIGHT 1560#

HEAD THK:	.210 MIN.	MATL	SA4144G	EFF	85%
SHELL THK:	.250 NOM.	MATL	SA455	EFF	70%
NATL BD.	YES	MAWP	150	PSI AT	400
STAMP:	"U" STAMP	MDMT	-20	° F AT	150
CRN:	H90973C	TEST:	HYDRO AT	195	PSI
REF:	SFI STOCK	PNEL AT	---	---	PSI

FITTINGS = SA181 CL70
 FLANGES = SA105 CL150
 PIPE = SA105B SEAMLESS
 MAWVAY = SA106-C
 ATTACHMENT WPS
 3/16 & BELOW A569 SFL-6
 5/16 & ABOVE A36 SFL-2-1
 STRUCTURAL A36 SFL-2-1
 1/4 A635 SFL3
 CALCULATED HEAD MIN. = .172"
 SPECIFIED HEAD MIN. = 210"

ITEM	P/N	DESCRIPTION	QTY
1	H42224J	42" OD 2:1 SE JOGGLE HEAD	2
2	R1000019	ROLLED SHELL	1
3	S100343	12 X 16 MANWAY-3/4" TH	1
4	S102115	RFSO ASY 4" 150" W/7"	2
5	F103001	3" SERIES 710 RAD NPT	1
6	F101000	1" SERIES 385 NPT	4
7	F100250	1/4" SERIES 381 NPT	1
8	F503000	3" PLASTIC PLUG	1
9	F501000	1" PLASTIC PLUG	4
10	F500250	1/4" PLASTIC PLUG	1
11			
12			
13	LL0063	LIFTING LUG 1/2" THK	4
14	S102114	SKIRT ASSEMBLY	1
15	S100001	NAME PLATE	1

Notes: Reference Steel FAB drawing A10131 Rev 17.

This document is our property and shall not without our permission be altered, copied, reproduced, or distributed in any form or by any means, electronic or mechanical, including photocopying, recording, or by any information storage and retrieval system.

CONTROL VERTICAL ORIENTATION OF COMMUNICATION TO ANY OTHER PERSON OR ORGANIZATION.

TANK - VERTICAL 620 GAL

DATE: 10/28/12

TIME: 10:00:12

1310 0720 55 01