

4

3

2

1

D

D

C

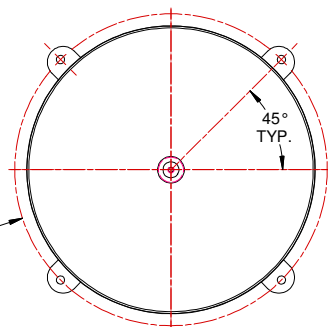
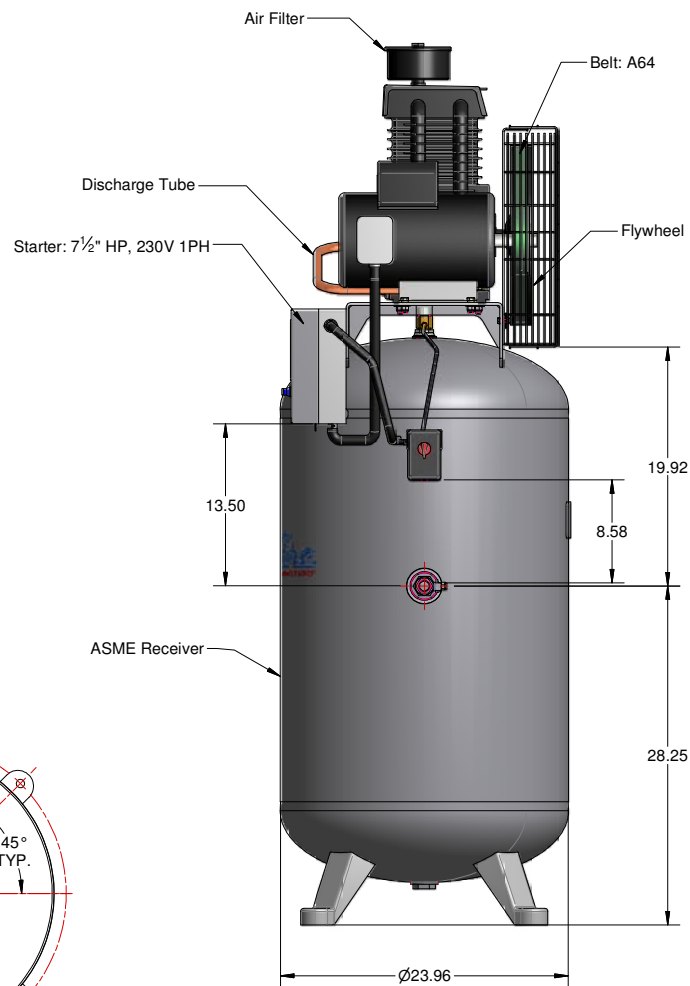
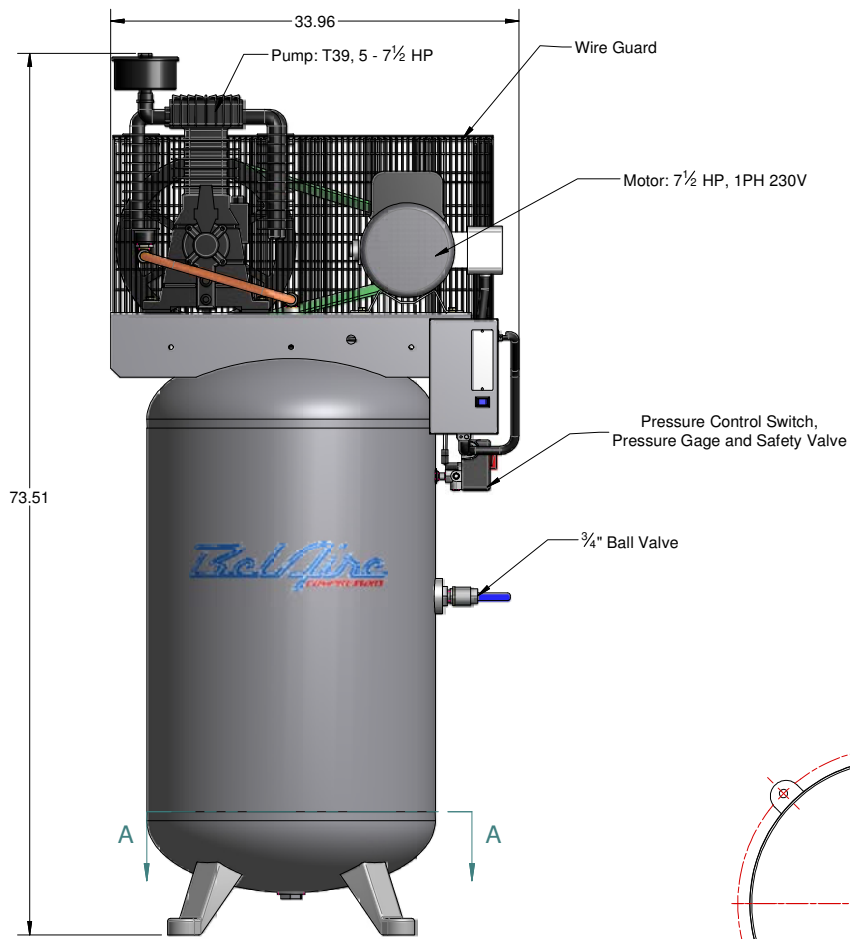
C

B

B

A

A



SECTION A-A

- Notes:**
1. FOUNDATION OR FLOOR MUST BE LEVEL AND SUPPORT ALL FEET EQUALLY.
 2. IF MOUNTED, FOUNDATION BOLTS SHOULD PROJECT THRU NUTS AT LEAST ½" TO ALLOW FOR LEVELING.
 3. ALLOW AT LEAST 12" CLEARANCE MIN. ON ALL SIDES FOR PROPER AIR CIRCULATION
 4. ALL DIMENSIONS ARE IN INCHES

Tolerances, if not indicated, according to: ATLAS COPCO COMPRESSORS LLC Rock Hill, SC 29730		Paint Spec. 1310 9203 85	Tolerance 1310 9000 00	P/N Stamping 1310 9039 51
This document is our property and shall not without our permission be altered, copied, used for manufacturing, or communication to any other person or company.				
GENERAL ARRANGEMENT: 80 GAL. VERTICAL, 7.5 HP 230V 1PH		BEL-AIRE		Secrecy Class 1102 K / 2
Matr'l SEE DRAWING		Replaces N/A		CAD INV R11
Scale N/A		Compare: 8090250015		Owner HOP
Drawn by FA		Blank DWG Status		Part Number 1312
Date 3/16/2012		RELEASED		Sheet 1 of 1
				Rev 00

ED	DESCRIPTION	DN	DATE	BY

4

3

2

1

↑