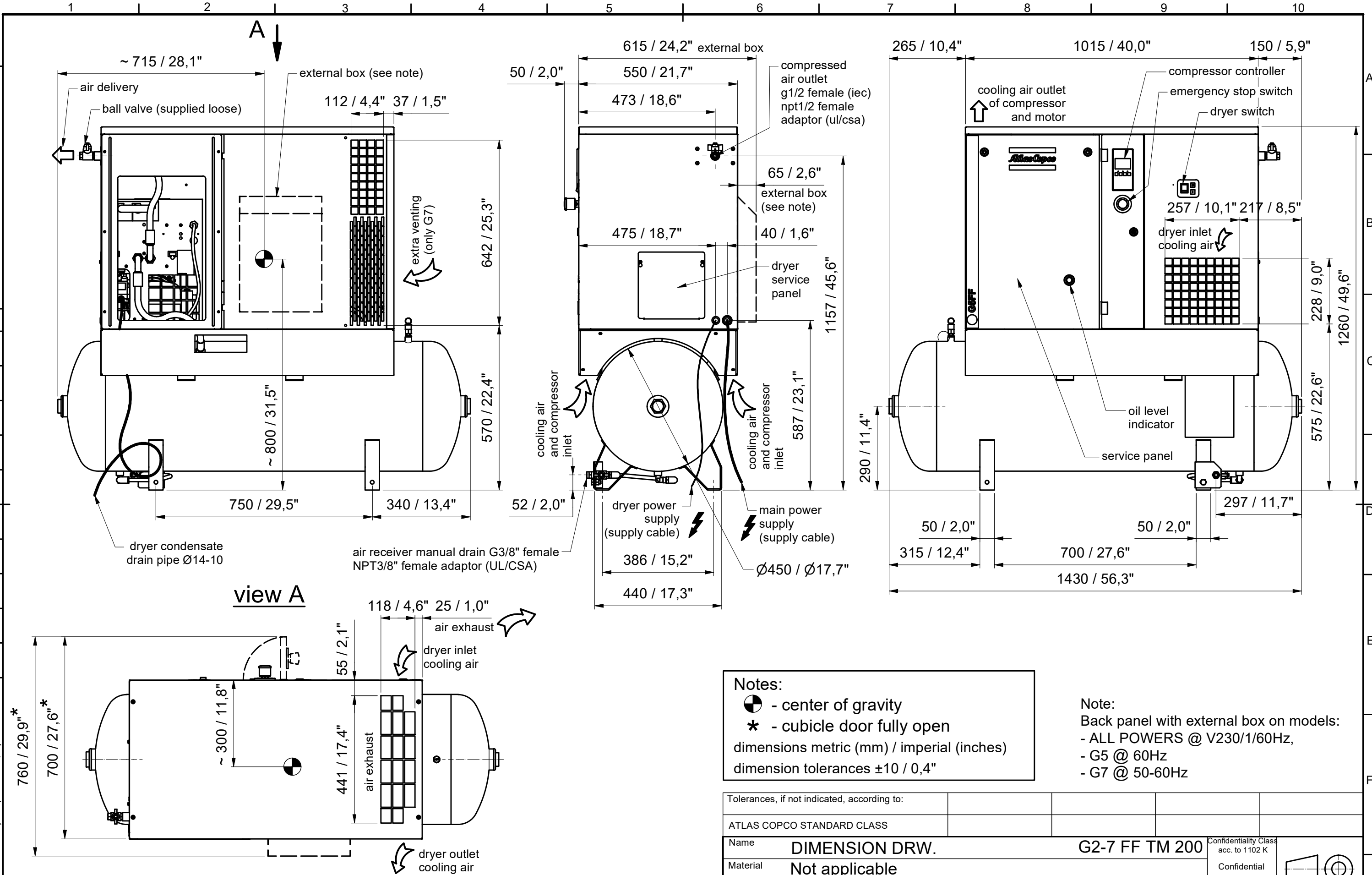


CONFIDENTIAL:

This document is property of Atlas Copco AB and shall not without our permission be altered, copied, used for manufacturing or communicated to any other person or company.

All materials supplied are in compliance with the requirements of the List of Prohibited Substances



Notes:

- - center of gravity
- * - cubicle door fully open

dimensions metric (mm) / imperial (inches)
dimension tolerances ±10 / 0,4"

Note:
Back panel with external box on models:
- ALL POWERS @ V230/1/60Hz,
- G5 @ 60Hz
- G7 @ 50-60Hz

Tolerances, if not indicated, according to:										
ATLAS COPCO STANDARD CLASS										
Name					DIMENSION DRW.			G2-7 FF TM 200		Confidentiality Class acc. to 1102 K
Material					Not applicable			INV		Confidential
Treatment					Not applicable			INV		Confidential
Scale		1 : 12		Family		C43		Compare		Drawing Owner
Drawn by		caisgraser		Blank nr.				Replaces		
Drawing format		Blank wt		Kg		Fini wt.		N/A		Transferred from
STATUS		A3								
Des checked.		Prod checked.		Approved.		Date				Sheet 1 / 1
Approved								9828084236		

00	Document release. CID 27712-12/10/2020. DN20062831	10/09/2020	sgraser	9828084228-M1	
Ed	Position	Date	Intr./Appd.	Parent 3D model	Ed. Version 3D
	Modified from				