



INSTRUCTION MANUAL

Air Supply Requirements

1. Supply tool with 90 psig (6.2 bar) of clean, dry air. Higher pressure drastically reduces tool life.
2. Connect tool to air line using pipe, hose and fitting sizes shown in the diagram on page 12.

Lubrication

1. Use an air line lubricator with SAE #10 oil, adjusted to two drops per minute. If an air line lubricator cannot be used, add air motor oil to the inlet once a day.
2. The use of synthetic oils for air line lubrication is not recommended because of possible damage to seals, o-rings, hose, rotor, blades and polycarbonate oiler/filter bowls.

Noise & Vibration Declaration*

Sound pressure level 91 dB(A) in accordance with Pneuop 8N-1. For sound power, add 10 dB(A).
Vibration value 7.5 m/s², re. ISO 8662-1.

Operation

1. To insert chisel, press loop on retainer aside, push chisel into cylinder and release loop.
2. Place cutting edge of chisel against workpiece, depress trigger.
⚠ Caution: Do not operate tool without chisel in cylinder, or allow the chisel to be driven out of cylinder. Internal damage will result if piston is allowed to strike cylinder wall.

Maintenance

1. Disassemble and inspect air hammer every three months if the tool is used every day. Replace damaged or worn parts.
2. High wear parts are underlined in the parts list.
3. Dirt or gum deposits cut tool power. To correct this, flush out the tool with gum solvent oil or an equal mixture of SAE #10 oil and kerosene. If outside conditions are in order, disassemble tool, replace worn or damaged parts, clean, reassemble and relubricate.

*These declared values were obtained by laboratory type testing in compliance with the stated standards and are not adequate for use in risk assessments. Values measured in individual work places may be higher than the declared values. The actual exposure values and risk of harm experienced by an individual user are unique and depend upon the way the user works, the workpiece and the workstation design, as well as upon the exposure time and the physical condition of the user. We, Chicago Pneumatic, cannot be held liable for the consequences of using the declared values, instead of values reflecting the actual exposure, in an individual risk assessment in a work place situation over which we have no control.

EC DECLARATION OF CONFORMITY

We, Chicago Pneumatic Tool Company, 1800 Overview Drive, Rock Hill, SC 29730 USA, declare under our sole responsibility that the product to which this declaration relates, is in conformity with the requirements of the Council Directive of June 1989 on the approximation of the laws of the Member States relating to machinery (89/392/EEC).

Machine Name CP714 Air Hammer

Machine Type Power Tool with .401 shank for use with chisel and various .401 shank accessories - No other use is permitted.

Serial No. Tools with No. 94200B or higher

Technical Data

.401 in. (10 mm) Round shank

Stroke 3-1/8 in. (79 mm)

Air pressure 90 psi (6.2 bar)

BPM 2000

Air consumption 5 CFM

Harmonized Standards Applied EN292

National Standards Applied ISO 8662-1, Pneuop 8N-1

Name and Position of Issuer W. A. LeNeveu, President, Chicago Pneumatic Tool Company

Signature of Issuer

Place and Date of Issue Utica, NY 13501 USA, July 31, 1994

MANUFACTURER'S LIMITED WARRANTY

Limited Warranty: The "Products" of the Chicago Pneumatic Tool Company ("CP") are warranted to be free from defects in material and workmanship for one year from the date of purchase. This Warranty applies only to Products purchased new from CP or its authorized dealers. Of course, this Warranty does not apply to products which have been abused, misused, modified, or repaired by someone other than CP or its Authorized Service Representatives. If a CP Product proves defective in material or workmanship within one year after purchase, return it to any CP Factory Service Center or Authorized Service Center for CP tools, transportation prepaid, enclosing your name and address, adequate proof of date of purchase, and a short description of the defect. CP will, at its option, repair or replace defective Products free of charge. Repairs or replacements are warranted as described above for the remainder of the original warranty period. CP's sole liability and your exclusive remedy under this Warranty is limited to repair or replacement of the defective Product. **(There Are No Other Warranties Expressed Or Implied And CP Shall Not Be Liable For Incidental, Consequential, Or Special Damages, Or Any Other Damages, Costs Or Expenses Excepting Only The Cost Or Expense Of Repair Or Replacement As Described Above.)**

WARNING

To reduce risk of injury, everyone using, installing, repairing, maintaining, changing accessories on, or working near this tool must read and understand these instructions before performing any such task.

The goal of Chicago Pneumatic is to produce tools that help you work safely and efficiently. The most important safety device for this or any tool is YOU. Your care and good judgment are the best protection against injury. All possible hazards cannot be covered here, but we have tried to highlight some of the important ones.

For Additional Safety Information Consult:

- ⚠ Your employer, union and/or trade association.
- ⚠ US Department of Labor (OSHA); www.osha.gov; Council of the European Communities europe.osha.eu.int
- ⚠ "Safety Code for Portable Air Tools" (ANSI B186.1) available from: www.ansi.org
- ⚠ "Safety Requirements for Hand-Held Non-Electric Power Tools" available from: European Committee for Standardization, www.cenorm.be

Air Supply And Connection Hazards

- ⚠ Air under pressure can cause severe injury.
- ⚠ Always shut off air supply, drain hose of air pressure and disconnect tool from air supply when not in use, before changing accessories or when making repairs.
- ⚠ Never direct air at yourself or anyone else.
- ⚠ Whipping hoses can cause serious injury. Always check for damaged or loose hoses and fittings.
- ⚠ Do not use quick disconnect couplings at tool. See instructions for correct setup.
- ⚠ Whenever universal twist couplings are used, lock pins must be installed.
- ⚠ Do not exceed maximum air pressure of 90 psi/6.2 bar or as stated on tool nameplate.

Projectile Hazards

- ⚠ Always wear impact-resistant eye and face protection when involved with or near the operation, repair or maintenance of the tool or changing accessories on the tool.
- ⚠ Be sure all others in the area are wearing impact-resistant eye and face protection.
- ⚠ Never operate a tool unless the accessory is retained in the tool with a proper retainer (see parts list).
- ⚠ To avoid injury, retainer parts must be replaced when they become worn, cracked or distorted.
- ⚠ On overhead work, wear a safety helmet.

Operating Hazards

- ⚠ To prevent damage to the tool and accessory, accessory must be held firmly against work surface before tool is throttled.
- ⚠ Always shut off air supply, relieve hose of air pressure and disconnect tool from air supply when changing accessories.
- ⚠ Avoid direct contact with accessory and work surface during and after work as they become heated and sharp.

SAFETY INSTRUCTIONS

- ⚠ Wear gloves to protect hands.
- ⚠ Operators and maintenance personnel must be physically able to handle the bulk, weight, and power of the tool.
- ⚠ Holding the accessory with the free hand can be a source of vibration exposure or injury.

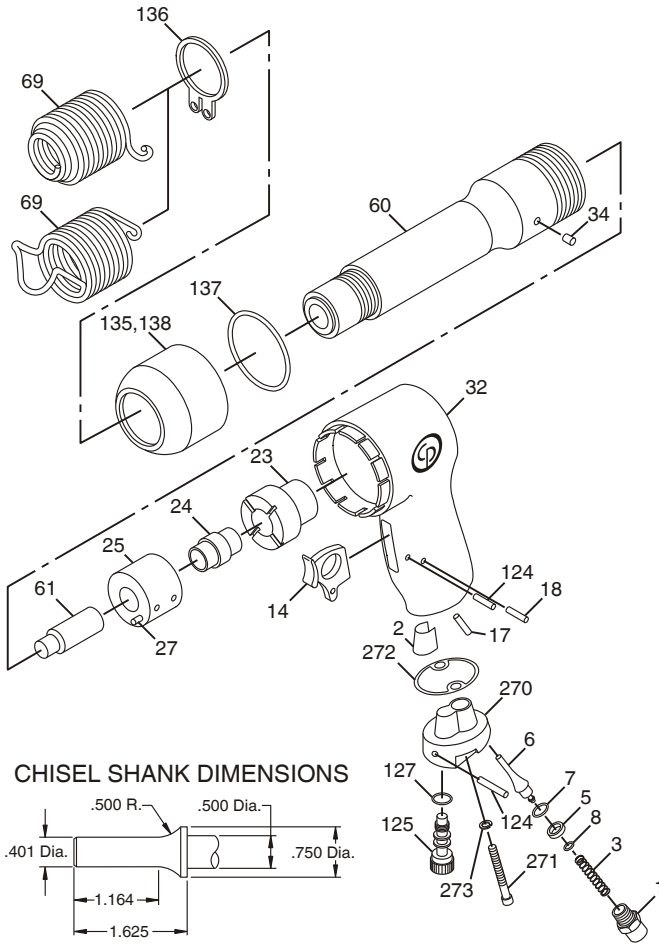
Accessory Hazards

- ⚠ Never use any chisel as a hand struck tool. They are specifically designed and heat-treated to be used only in air hammers.
- ⚠ Select the correct shank and retainer for the tool being used.
- ⚠ Never use dull accessories as they require excessive work pressure and can break from fatigue.
- ⚠ Never cool a hot accessory in water. Brittleness and early failure can result.
- ⚠ This tool and its accessories must not be modified in any way.
- ⚠ Chicago Pneumatic hammers are not intended for use with any accessories that are not listed in the catalog.
- ⚠ Accessory breakage or tool damage may result from prying. Take smaller bites to avoid getting struck.

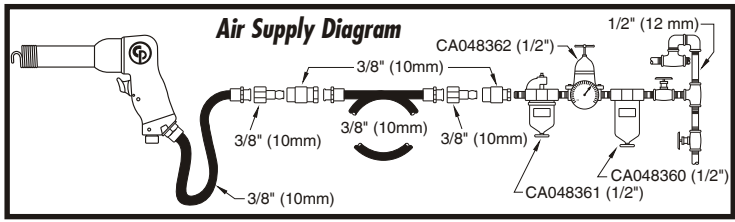
Workplace Hazards

- ⚠ Slip/Trip/Fall is a major cause of serious injury or death. Be aware of excess hose left on the walking or work surface.
 - ⚠ High sound levels can cause permanent hearing loss. Use hearing protection as recommended by your employer or OSHA regulation (see 29 CFR part 1910).
 - ⚠ Maintain a balanced body position and secure footing.
 - ⚠ Repetitive work motions, awkward positions and exposure to vibration can be harmful to hands and arms. If numbness, tingling, pain or whitening of the skin occurs, stop using tool and consult a physician.
 - ⚠ Avoid inhaling dust or handling debris from the work process which can be harmful to your health. Use dust extraction and wear respiratory protective equipment when working with materials which produce airborne particles.
 - ⚠ Proceed with care in unfamiliar surroundings. Hidden hazards may exist, such as electric or other utility lines.
 - ⚠ This tool is not intended for use in explosive atmospheres and is not insulated for contact with electric power sources.
 - ⚠ Some dust created by power sanding, sawing, grinding, drilling and other construction activities contains chemicals known to the State of California to cause cancer and birth defects or other reproductive harm. Some examples of these chemicals are:
 - Lead from lead based paints
 - Crystalline silica bricks and cement and other masonry products
 - And Arsenic and chromium from chemically-treated rubber
- Your risk from these exposures varies, depending on how often you do this type of work. To reduce your exposure to these chemicals: work in a well ventilated area, and work with approved safety equipment, such as dust masks that are specially designed to filter out microscopic particles.

CP714 Air Hammer



Index No.	Part No.	Description	No. Req'd.
1	CA091545	Cap-Throttle	1
2	CA046590	Screen-Air	1
3	A117360	Spring-Throttle Valve	1
5	A050261	Valve-Throttle	1
6	A050262	Stem-Throttle Valve	1
7	C079489	O-Ring (-008)	1
8	A050268	O-Ring (-004)	1
14	CA099927	Trigger	1
17	A050263	Push Pin	1
18	S014764	Trigger Pin Lower	1
23	P070557	Lid-Valve Case	1
24	P070555	Valve	1
25	P070556	Valve Case	1
27	C138386	Pin-Roll .1250 x 1.25	1
32	A050265	Handle-Offset	1
34	P070552	Pin	1
60	A050267	Cylinder	1
61	P071926	Piston	1
69	A046094	Retainer (Zip Change)	1
	A046096	Retainer (Bee-Hive)	1
124	C056671	Pin-Plain	2
125	CA046691	Regulator (Incl: Index No. 127)	1
127	C102551	O-Ring (-012)	1
135	P070554	Deflector-Exhaust Assy. (Incl: Index Nos. 136, 137, 138)	1
136	S086833	Retaining Ring	1
137	C089890	O-Ring (-222)	1
138	P142862	Deflector-Exhaust	1
270	KF141312	Block-Valve	1
271	C089718	Screw-Hex SKT HD	2
272	CA099895	Gasket-Valve Block	1
273	S091250	Lockwasher	2
	A050332	Regulator-Assy. (Not Shown) (Incl: Index Nos. 1, 3, 5, 6, 7, 8, 124, 125, 127 & 270)	1
	CA131376	Decal-Oil Daily (Not Shown)	1
	CA156894	Decal-Safety Warning (Not Shown)	1



FOR DETAILED INFORMATION ABOUT CHICAGO PNEUMATIC AIR TOOLS AND EQUIPMENT CONTACT:

HEADQUARTERS LOCATION

UNITED STATES
Chicago Pneumatic Tool Company
Automotive Division
1800 Overview Drive
Rock Hill, SC 29730
Telephone: 1-803-817-7000
1-800-367-2442 (USA only)
Fax: 1-800-228-9096

AUSTRALIA
Atlas Copco Tools Australia
3 Bessemer Street
Blacktown • Australia
Telephone: 02-621-9482
Fax: 02-671-5915

BELGIQUE
Chicago Pneumatic Rep. Office
Avenue Sluysmans 10-4030
Liege • Belgium
Tel/Fax: 04-343 8150

BRASIL
Chicago Pneumatic Brasil
Av. Mascote 159 V. Sta. Catarina
04363-000
Sao Paulo/SP • Brasil
Telefone: (011) 562-7314
Fax: (011) 563-9208

CANADA
Chicago Pneumatic Tool Co.
Automotive Division
1800 Overview Drive
Rock Hill, SC 29730
Telephone: 1-803-817-7000
Fax: 1-800-228-9096

CENTRAL AMERICA
Contact Chicago Pneumatic/USA
for names of CP Authorized
Distributors in this area

GERMANY
Desoutter GMBH
Paul-Friedlander-Str
65203 Wiesbaden • Germany
Telephone: 49-0611-270120/22
FAX: 49-0611-270140

INDIA
Consolidated Pneumatic Tool
Company (India) Ltd.
301/302, L.B. Shastri Marg
P.O. Box 7761
Mulund, Bombay 400 080 • India
Phone: 91-22-564-0011
Fax: 91-22-564-7687
Telex: 1171990 CPT I N

ITALY
Desoutter Italiana S.R.L.
Viale Della Repubblica, 65
20035 Lisson (Milano)

MEXICO
Chicago Pneumatic Tool
Company Mexico
San Francisco #223
Valle Dorado, Tlalnepanitla
C.P. 54020 • Mexico
Telephone: 525-378-0754
FAX: 525-378-0753

SOUTH AFRICA
Chicago Pneumatic Tool
Company, S.A.
20 Anvil Road
PO Box 105
Isando 1600, Transvaal
South Africa
Phone: 011-9746761
Fax: 011-974-2324

SOUTH AMERICA
Contact Chicago Pneumatic/USA
for names of CP Authorized
Distributors in this area

SOUTHEAST ASIA
Chicago Pneumatic Tool
Company Regional Office
P.O. Box 1516
Unit 2103 - Citimark
28 Yuen Shun Circuit
Shatin
New Territories, Hong Kong
Telephone: (852) 3570963
FAX: 852-763-1875

SWEDEN
Chicago Pneumatic
Distributor Markets
Sickla Industriväg 7
S-131 34 Nacka • Sweden
Telephone: 46 8743 9329
Fax: 46-8743 9427

UNITED KINGDOM
Chicago Pneumatic
Tool Company, Ltd.
P.O. Box 241
Eaton Road
Hemel Hempstead, Herts HP2 7DR
England
Domestic: 01442-847703/06
Export: 01442-232420/17
FAX: 01442-2847723

Visit our website:
<http://www.chicagopneumatic.com>