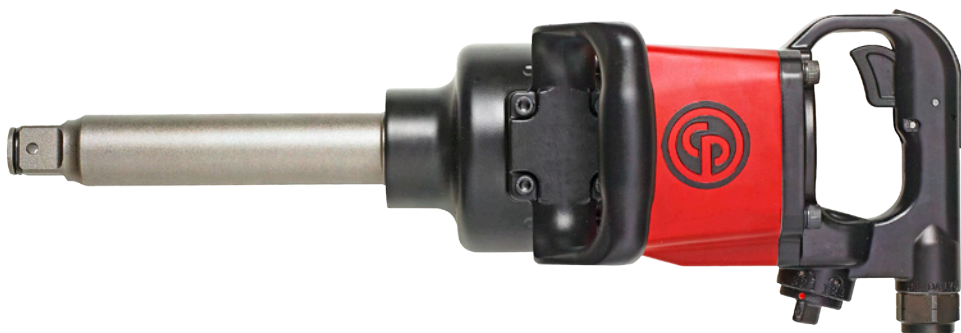


Operator's Manual



CP7782 Series **Air Impact Wrench**



WARNING

To reduce risk of injury, everyone using, installing, repairing, maintaining, changing accessories on, or working near this tool must read and understand these instructions before performing any such task. Safety instructions: 6159948710

LOCAL SALES SERVICE AND WARRANTY LOCATIONS

- EN Please find your local contact at: www.cp.com
- ES Busque su contacto local en: www.cp.com
- FR Votre contact local sur : www.cp.com
- IT Per trovare il contatto CP nella vostra zona, visitate: www.cp.com
- SV Du kan hitta din lokala kontakt på: www.cp.com
- DE Ihren Ansprechpartner finden Sie auch unter: www.cp.com
- PT Por favor, encontre o seu distr buidor local em: www.cp.com
- NN Du kan finne din lokale kontakt på: www.cp.com
- NL U kunt uw plaatselijke contact vinden op: www.cp.com
- DA Find din lokale kontakt på: www.cp.com
- FI Katso paikallisia yhteystietoja osoitteesta: www.cp.com
- RU Информация, необходимая для связи с местным представителем компании, может быть найдена на следующем веб-сайте: www.cp.com
- ZH 请上网站www.cp.com查询本地联系单位。
- EL Παρακαλούμε βρείτε τον τοπικό σας αντιπρόσωπο στη διεύθυνση: www.cp.com
- HU A helyi elérhetőségek megtalálhatók itt: www.cp.com
- LV Lūdzu, atrodiēt vietējās kontaktpersonas: www.cp.com
- PL Najbliższą placówkę można znaleźć po adresem: www.cp.com
- CS Svůj místní kontakt laskavě vyhledejte na adrese: www.cp.com
- SK Prosím, vyhľadajte svoj miestny kontakt na adrese: www.cp.com
- SL Prosimo, najдите svoj lokalni kontakt na: www.cp.com
- LT Vietinį kontaktą rasite svetainėje: www.cp.com
- JA 最寄りの連絡先については、当社ウェブサイトをご覧ください: www.cp.com
- BG За контакт с местен представител, моля, посетете: www.cp.com
- HR Svojea lokalnog predstavnika pronađite na: www.cp.com
- RO Puteți găsi informațiile reprezentantului autorizat local din regiunea dumneavoastră la: www.cp.com
- TR Yerel temsilcinizi şu adresden bulabilirsiniz: www.cp.com
- KO 귀하 지역의 대리점은 다음 사이트에서 찾으실 수 있습니다: www.cp.com



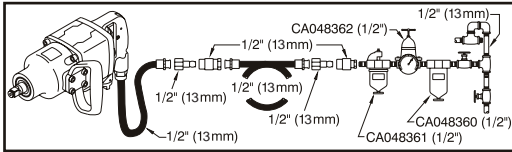
INSTRUCTION MANUAL

Machine Type:

This product is designed for installing and removing threaded fasteners in wood, metal and plastic. No other use permitted. For professional use only.

Air Supply Requirements

1. Supply tool with 90 psig (6.2 bar) of clean, dry air. Higher pressure drastically reduces tool life.
2. Connect tool to air line using pipe, hose and fitting sizes shown in the diagram below.



Lubrication

1. Use an air line lubricator with SAE #10 oil, adjusted to two (2) drops per minute. If an air line lubricator cannot be used, add air motor oil to the inlet once a day.
2. Use 0.50 oz. (14.4 g) of CP Pneu-Lube Synthetic Clutch Grease 8940158455.

Operation

The intended use of this impact wrench is with impact rated sockets operating upon threaded fasteners. To operate, pull trigger on handle. To operate in forward rotation, push the reverse switch to the left. To operate in reverse rotation, push the reverse switch to the right. This impact wrench includes a power management system to enable adjustment of output power. To adjust the power, rotate the power regulator to #3 for maximum power, to #1 for minimum power.

Maintenance

1. After first year, disassemble and inspect air motor and impacting clutch every three (3) months if the tool is used every day. Replace damaged or worn parts.
2. High wear parts are underlined in the parts list.
3. To keep downtime to a minimum, the following service kits are recommended:
Tune-Up Kit: see part list 8940169484

Technical Data

Free speed:
5200 RPM

Original Instructions

Copyright 2012, Chicago Pneumatic Tool Co. LLC

All rights reserved. Any unauthorized use or copying of the contents or part thereof is prohibited. This applies in particular to trademarks, model denominations, part numbers and drawings. Use only authorized parts. Any damage or malfunction caused by the use of unauthorized parts is not covered by Warranty or Product Liability.

Noise & Vibration Declaration

Sound pressure level 100 dB(A), uncertainty 3 dB(A), in accordance with EN ISO 15744. For sound power, add 11 dB(A).

Vibration value:

CP7782: 6.5 m/s², uncertainty k = 1,6, re. ISO 28927-2.

CP7782-6 & CP7782-SP6: 7.8 m/s², uncertainty k = 1,9, re. ISO 28927-2.

Declaration of noise and vibration emission

All values are current as of the date of this publication. For the latest information please visit cp.com.

These declared values were obtained by laboratory type testing in accordance with the stated standards and are suitable for comparison with the declared values of other tools tested in accordance with the same standards. These declared values are not adequate for use in risk assessments and values measured in individual work places may be higher. The actual exposure values and risk of harm experienced by an individual user are unique and depend upon the way the user works, the workpiece and the workstation design, as well upon the exposure time and the physical condition of the user. We, Chicago Pneumatic, cannot be held liable for the consequences of using the declared values, instead of values reflecting the actual exposure, in an individual risk assessment in a work place situation over which we have no control.

This tool may cause hand-arm vibration syndrome if its use is not adequately managed. An EU guide to managing hand-arm vibration can be found at www.pneurop.eu/uploads/documents/pdf/PN3-02-NV_Declaration_info_sheet_0111.pdf. We recommend a programme of health surveillance to detect early symptoms which may relate to noise or vibration exposure, so that management procedures can be modified to help prevent future impairment.