
**Kaishan Technologies
Rotary Screw Air
Compressor**

**KRSD 40-50HP
Parts Manual**

October 2022

(208V/230V/460V/575V/60HZ/ASME/CRN/UL/CUL)

TABLE OF CONTENTS

Service Parts	3
Serial Number	3
Fluid Specification	4
Spare Parts	5
Airend and Inlet valve.....	6
Base Mounting.....	8
Reservoir	10
Driving System and Electrical Motor	12
Air Cooler	14
Fluid Piping.....	16
Air Piping.....	18
Cabinet(Fixed speed).....	20
Cabinet(VSD)	22
Electrical Enclosure(Fixed speed).....	24
Electrical Enclosure(VSD)	28
Decals	32
Standard Terms and Conditions.....	35
Appendix.....	38
Contact Information	39

Service Parts


The following information must be provided for ordering service parts:

1. The serial number of unit must be provided. It will be verified to ensure correct replacement parts are ordered.
2. Service parts must be ordered from closest authorized distributor.
3. Exact part number, quantity and delivery method must be provided.

All service parts must be ordered through nearest authorized distributor. Insist on genuine manufacturer parts only. Failure to do so may void product warranty.

Serial Number

The unit serial number can be found on serial number tag, which is located on the cabinet corner post of the unit. The serial number tag is shown as follows.

		SCREW AIR COMPRESSOR	
MODEL	<input type="text"/>		
SERIAL NUMBER	<input type="text"/>		
RATED DISCHARGE PRESSURE	<input type="text"/>	PSI	MOTOR POWER <input type="text"/> HP
RATED SPEED	<input type="text"/>	RPM	NET WEIGHT <input type="text"/> KG
OVERAL DIMENSIONS (L x W x H)	MM <input type="text"/>		
VOLTAGE	<input type="text"/>	DATE OF MFG	<input type="text"/>
KAISHAN COMPRESSOR, Loxley, AL USA			

Fluid Specification

All KRSD Compressors must use KCA recommended fluid for maintenance.

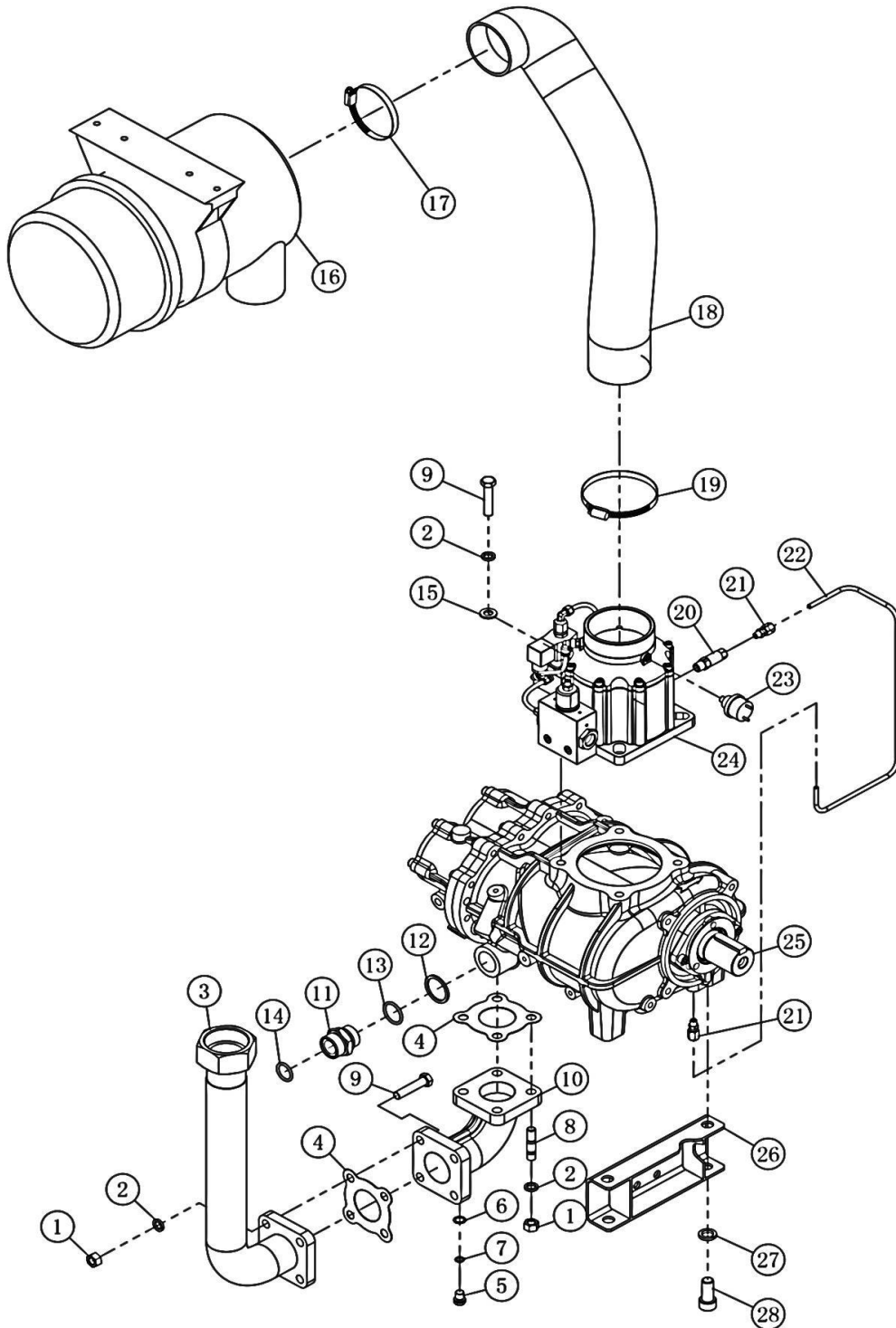
Spare Parts

Recommended spare parts are shown as follows:

ITEM	No.	QTY	PART NUMBER	DESCRIPTION		
1		1	56006 158376	Air filter element		
2		1	07709 94212 00	Oil filter		
3		1	55170 200230*	Fluid/air separator element		

*For KRSD50 with serial number starting with 3718 use separator element PN 55170 200305

Airend and Inlet valve



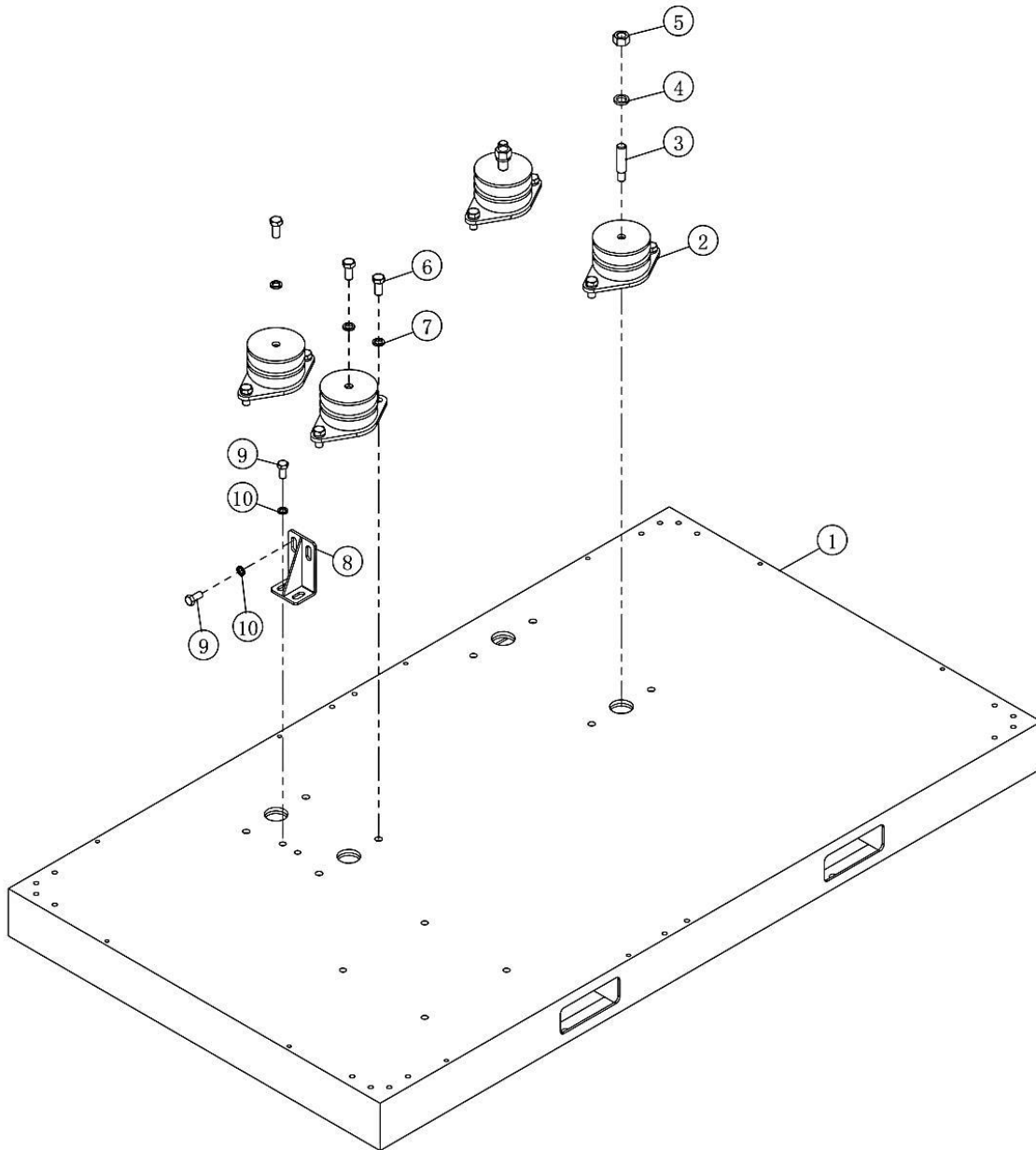
Airend and Inlet valve

(/)

NO.	PN	DESCRIPTION	QTY	REMARK
1	01322 12000 00	Nut	5	M12
2	01365 12000 00	Washer	9	12
3	91433 03001 69	Discharge pipe	1	
4	02217 09604 16	Seal	2	
5	18404 03100 00	Plug	1	M12X1.5
6	02201 01215 00	Screw washer	1	
7	02901 00950 10	O-ring	1	9.5X1.8
8	01391 12040 00	Stud	4	M12×40
9	01306 12055 00	Bolt	5	M12×55
10	16424 03001 00	Discharge pipe	1	
11	16315 06009 09	Joint	1	
12	02201 00025 00	Screw washer	1	
13	02901 03000 30	O-ring	1	30X5.5
14	02901 02360 30	O-ring	1	23.6X3.55
15	01366 12000 00	Washer	4	12
16	07702 06153 77	Air filter	1	
	56 006 158 376	Air filter element	1	
17	04401 07209 50	Hoop	1	
18	02907 08110 55	Flexible pipe	1	
19	04401 09012 00	Hoop	1	
20	01610 03000 00	Check valve	1	
21	01512 06100 00	Joint	2	
22	91433 01001 69	Oil return pipe	1	
23	02809 00102 00	Air filter indicator	1	
24	01608 08512 00	Inlet valve	1	
24A*	04002 00085 00	Inlet valve kit	1	Spring A, Spring B, Seal gasket, Piston ring, O-ring 69.52x2.62, O-ring 16x2, O-ring 28x2, O-ring 126.59x3.53
24B*	01605 71027 00	Regulator valve	1	
24C*	01603 00018 00	Solenoid valve	1	
24D*	01605 90373 10	Blowdown block	1	
25	4040101	Airend	1	KRSD50/50VSD
	4030101			KRSD40/40VSD
26	15458 01001 09	Airend support	1	KRSD50/50VSD
	15558 01001 09			KRSD40/40VSD
27	01365 16000 00	Washer	2	16
28	01344 16035 00	Stud	2	M16X35

*Items not shown on the drawing.

Base Mounting

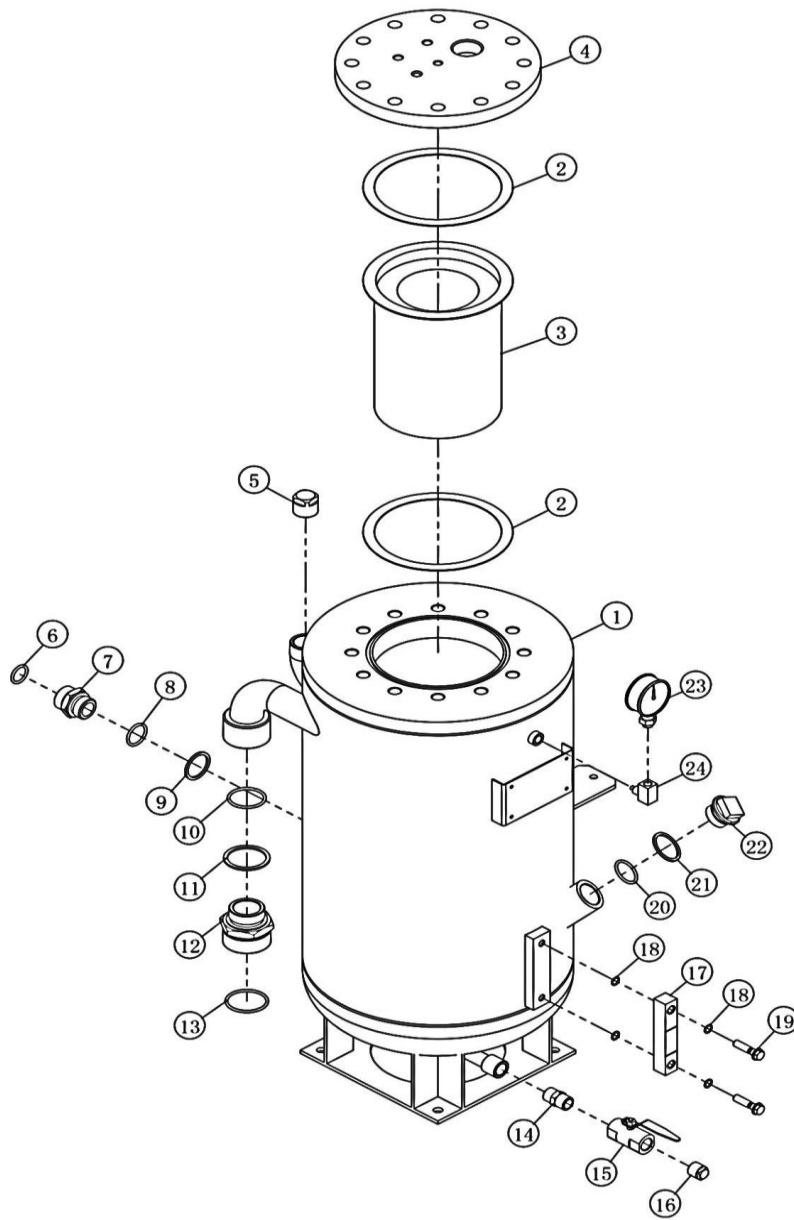


Base Mounting

(/)

NO.	PN	DESCRIPTION	QTY	REMARK
1	91433 02010 69	Base	1	FS
	91244 02010 06			VSD
2	02905 00002 00	Absorber	4	
3	17330 02001 00	Stud	2	M14-M18
4	01365 18000 00	Washer	2	18
5	01322 18000 00	Nut	2	M18
6	01307 14030 00	Bolt	10	M14×30
7	01365 14000 00	Washer	10	14
8	17415 00001 00	Fixed plate, shipping	1	
9	01307 12025 00	Bolt	2	M12×25
10	01365 12000 00	Washer	2	12

Reservoir



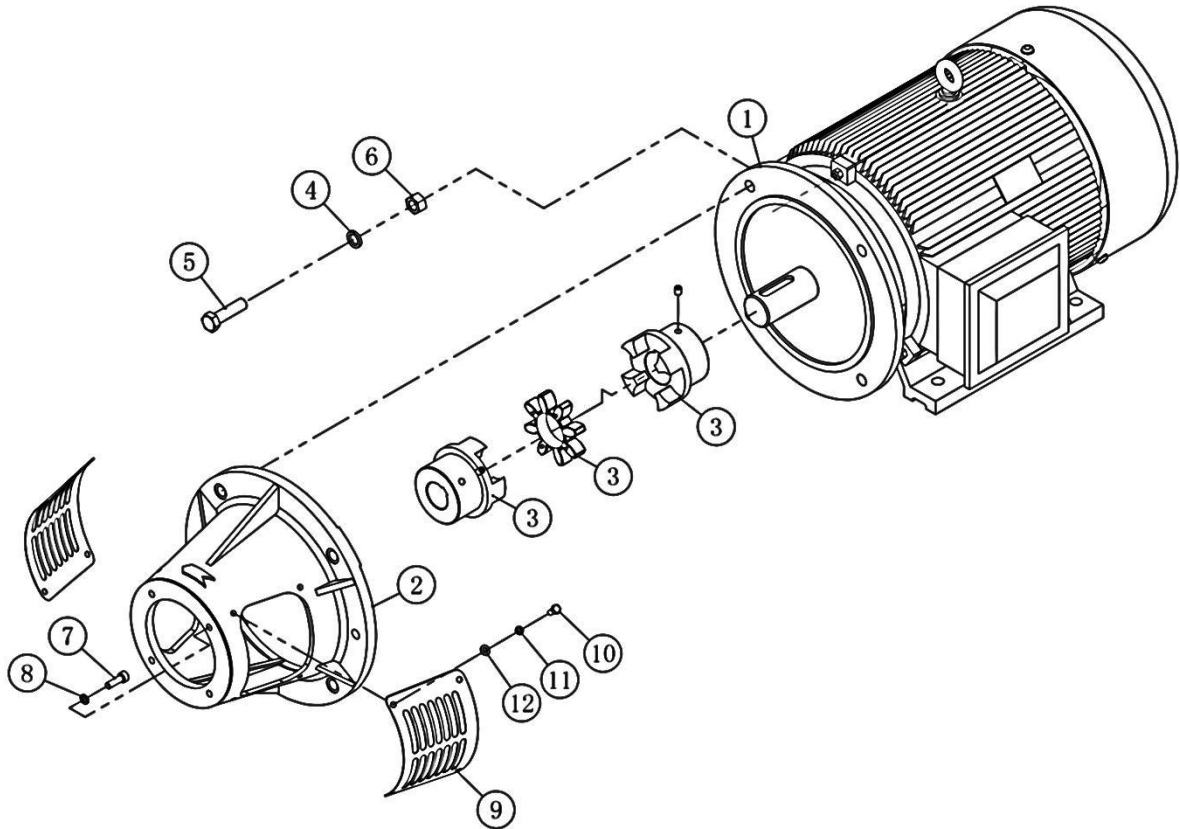
Reservoir

(/)

NO.	PN	DESCRIPTION	QTY	REMARK
1	17433 03010 09	Fluid/air separator	1	ASME
2	02216 17203 11	Gasket	2	
3*	55170 200230	Fluid/air separator element	1	
4	17433 03010 39	Top cover	1	
5	02103 00025 02	Plug	1	
6	02901 02360 30	O-ring	1	23.6X3.55
7	16315 06009 09	Joint	1	
8	02901 03000 30	O-ring	1	30X3.55
9	02201 00025 00	Screw washer	1	
10	02901 04500 30	O-ring	1	45X3.55
11	02201 00040 00	Screw washer	1	
12	26409 06110 00	Joint	1	G1 1/2-M64*2
13	02901 05150 30	O-ring	1	51.5X3.55
14	13340 03004 00	Joint	1	
15	01613 01500 00	Ball valve	1	DN15
16	02103 00015 00	Plug	1	
17	13315 03002 00	Oil sight glass	1	
18	02901 01060 10	O-ring	4	10.6X1.8
19	13315 03001 00	Hollow bolt	2	M10X40
20	02901 03350 30	O-ring	1	33.5X3.55
21	02201 03320 00	Screw washer	1	
22	13340 03003 00	Plug	1	
23	02801 06306 00	Pressure gauge	1	
24	98042 00007 00	Joint	1	

*For KRSD50 with serial number starting with 3718 use separator element PN 55170 200305

Driving System and Electrical Motor

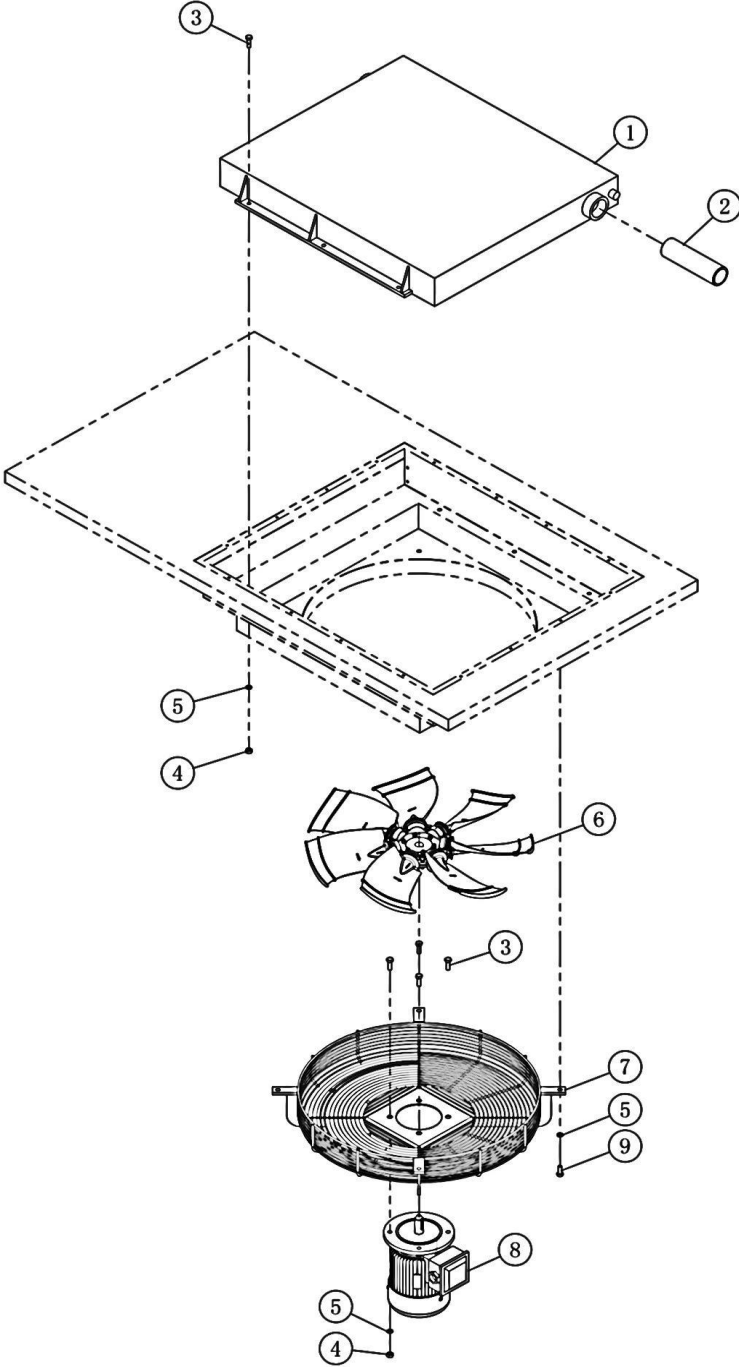


Driving System and Electrical Motor

(/)

NO.	PN	DESCRIPTION	QTY	REMARK
	62037 37643 25	Motor(50HP)		208-230-460V/60HZ
	62037 58643 25	Motor(50HP)		575V/60HZ
	62037 46943 25	Motor(50HP)		460V/60HZ/VSD
	62037 58943 25	Motor(50HP)		575V/60HZ/VSD
	62030 37643 25	Motor(40HP)		208-230-460V/60HZ
	62030 58643 25			575V/60HZ
	62030 46943 25	Motor(40HP)		460V/60HZ/VSD/IE3
2	SKY99N-15	Connecting cylinder	1	
3	01908 05500 00	Coupling element (elastomer)	1	
	01905 05504 50	Airend half coupling	1	
	01905 05505 50	Motor half coupling	1	
4	01365 18000 00	Washer	4	18
5	01307 18065 00	Bolt	4	M18X65
6	01322 18000 00	Nut	4	M18
7	01344 10030 00	Bolt	4	M10X30
8	01365 10000 00	Washer	4	10
9	SKY105-15-1	Cover	2	
10	01307 08016 00	Bolt	1	M8X16
11	01365 08000 00	Washer	1	8
12	01366 08000 00	Washer	1	8

Air Cooler

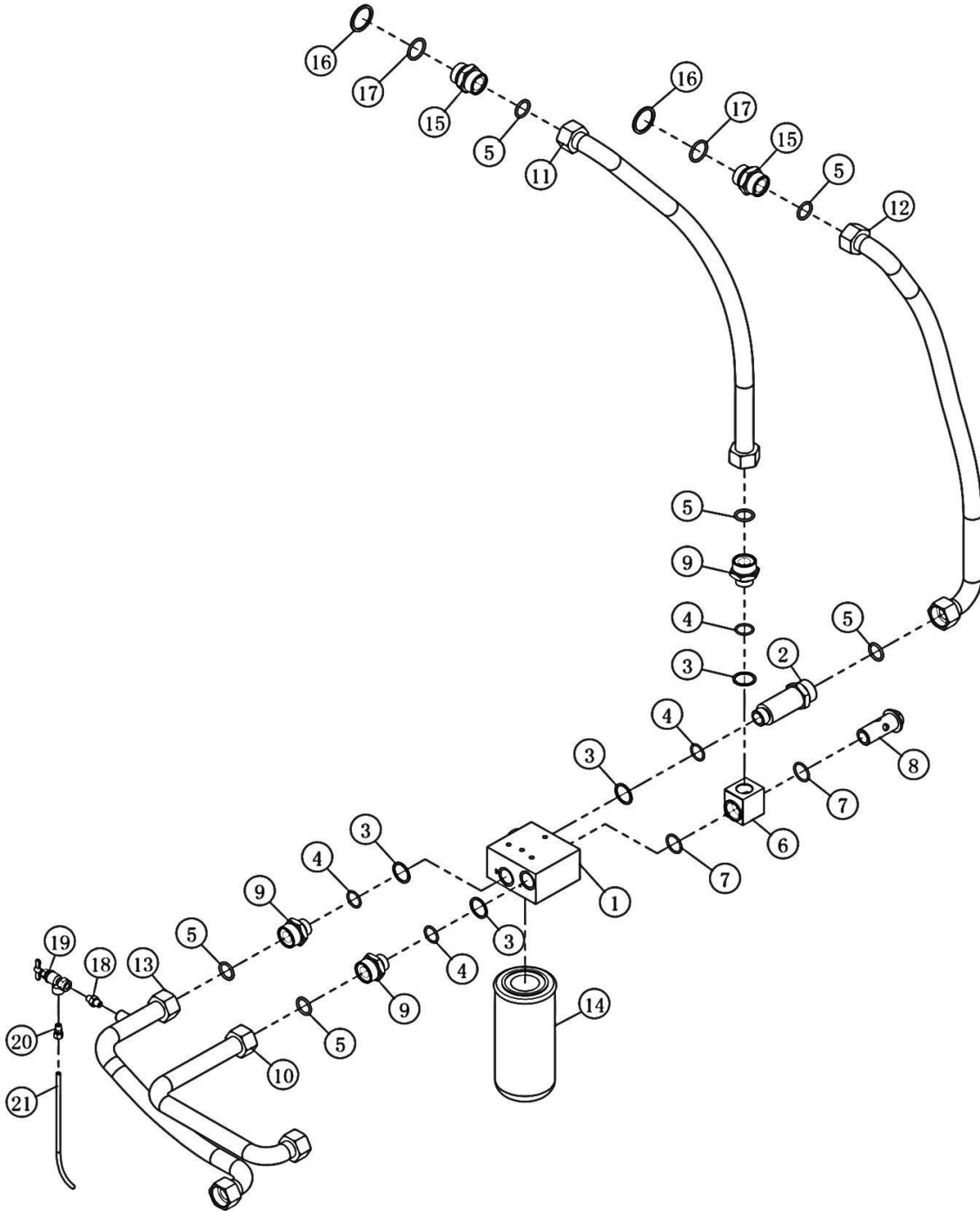


Air Cooler

(/)

NO.	PN	DESCRIPTION	QTY	REMARK
1	16333 05010 00	Cooler	1	
2	16333 05002 00	Connecting pipe	1	
3	01307 10030 00	Bolt	5	M10X30
4	01322 10000 00	Nut	5	M10
5	01365 10000 00	Washer	6	10
6	07204 65006 00	Fan blade	1	
7	07205 65002 00	Net cover	1	
8	66175 36651 21	Motor	1	0.75kw/230V/460V/60HZ
	66175 46651 21			0.75kw/460V/60HZ/VSD/IE3
	66175 37651 21			0.75kw/208-230-460V/60HZ
	66175 58651 21			0.75kw/575V/60Hz
9	01307 10025 00	Bolt	1	M10X25

Fluid Piping



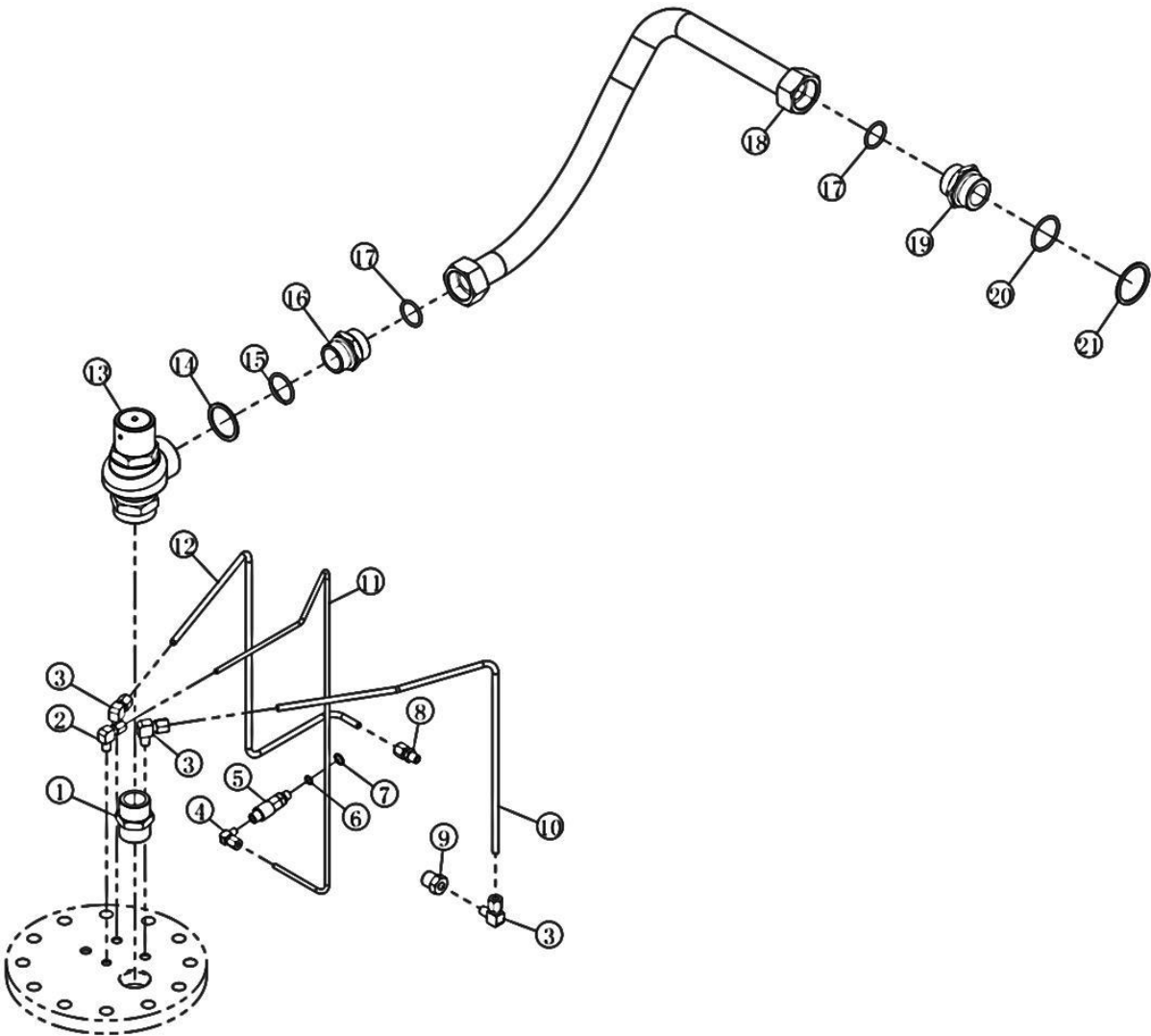
Fluid Piping

(/)

NO.	PN	DESCRIPTION	QTY	REMARK
1	01611 02083 01	Thermal valve	1	
1A*	04004 20083 02	Thermal valve kit	1	O-ring 38x3, Valve element, Sleeve, Spring.
2	16330 06002 00	Connecting pipe	1	
3	02201 00020 00	Screw washer	4	
4	02901 02360 20	O-ring	4	23.6X2.65
5	02901 02360 30	O-ring	6	23.6X3.55
6	16315 06004 00	Connecting seat	1	
7	02901 02730 20	O-ring	2	27.3X2.65
8	16315 06003 00	Hollow bolt	1	
9	16330 06001 00	Joint	3	
10	17433 06002 09	Oil pipe	1	
11	91433 06002 69	Oil pipe	1	
12	91433 06003 69	Oil pipe	1	
13	91433 06001 69	Oil pipe	1	
14	07709 94212 00	Oil filter	1	
15	16315 06009 09	Joint	2	
16	02201 00025 00	Screw washer	2	
17	02901 03000 30	O-ring	2	30X3.55
18	98018 07011 06	Joint	1	
19	01613 00600 99	Sample valve	1	
20	01511 06100 00	Joint	1	
21	91433 06004 69	Oil pipe	1	

* Items not shown on the drawing.

Air Piping



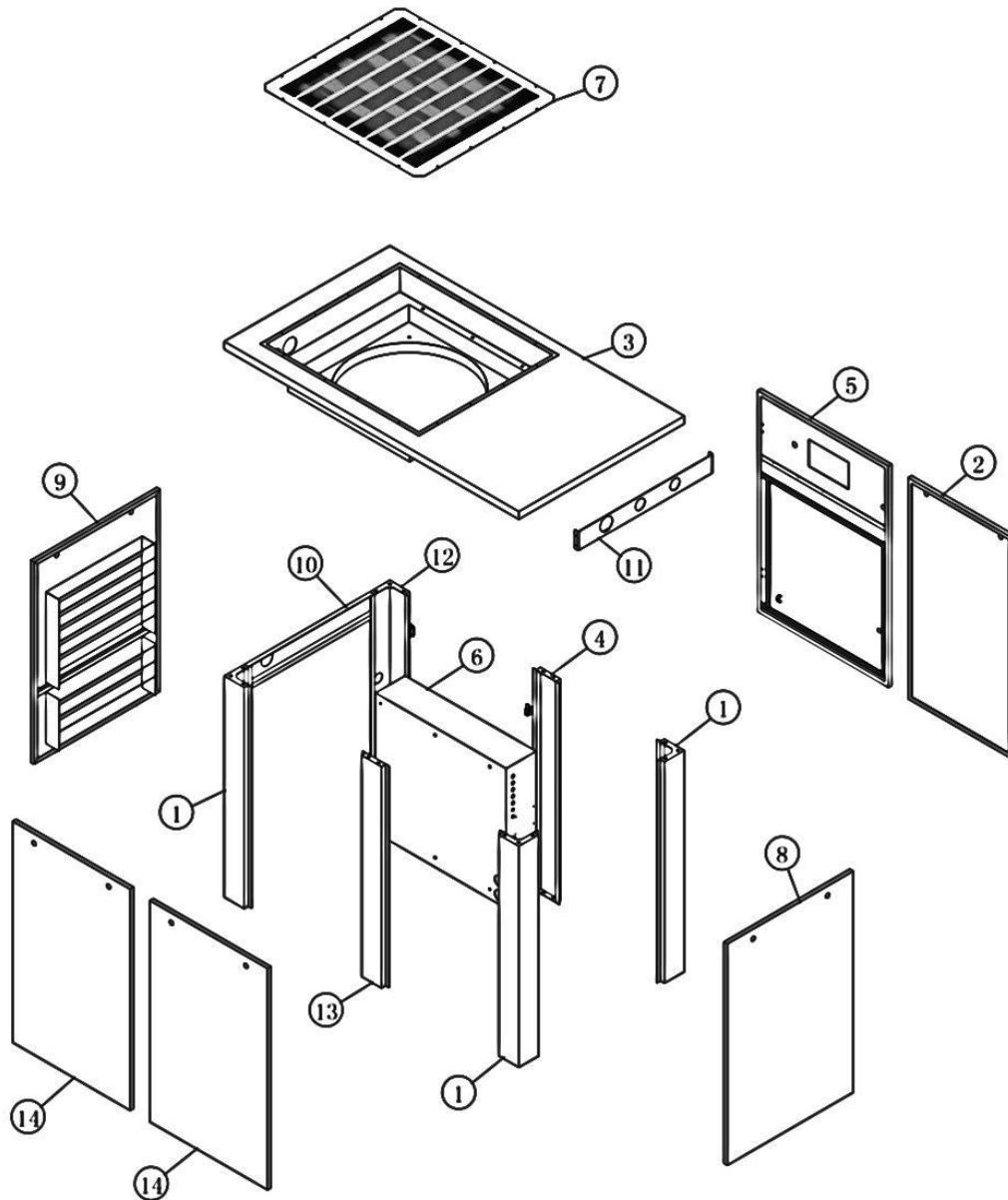
Air Piping

(/)

NO.	PN	DESCRIPTION	QTY	REMARK
1	16315 07011 00	Joint	1	
2	01513 06670 00	Joint	1	
3	01513 08130 00	Joint	3	
4	01513 06100 00	Joint	1	
5	01610 01010 01	Oil sight check valve	1	
6	02901 00950 10	O-ring	1	9.5X1.8
7	02201 01215 00	Screw washer	1	
8	01512 08130 00	Joint	1	
9	16315 07004 70	Joint	1	
10	91433 07003 69	Control pipe	1	
11	91433 07002 69	Oil return pipe	1	
12	91433 07004 69	Control pipe	1	
13	01612 03203 00	MPV	1	
13A*	04006 03203 00	MPV kit	1	Check valve element, Spring 1, Valve element, O-ring 34.42X2.95, O-ring 47X3, Spring 2
14	02201 00032 00	Screw washer	1	
15	02901 03870 30	O-ring	1	38.7X3.55
16	16315 07012 09	Joint	1	
17	02901 03250 30	O-ring	2	32.5X3.55
18	91433 07001 69	Discharge pipe	1	
19	16315 07140 09	Joint	1	
20	02901 04500 30	O-ring	1	45X3.55
21	02201 00040 00	Screw washer	1	

* Items not shown on the drawing.

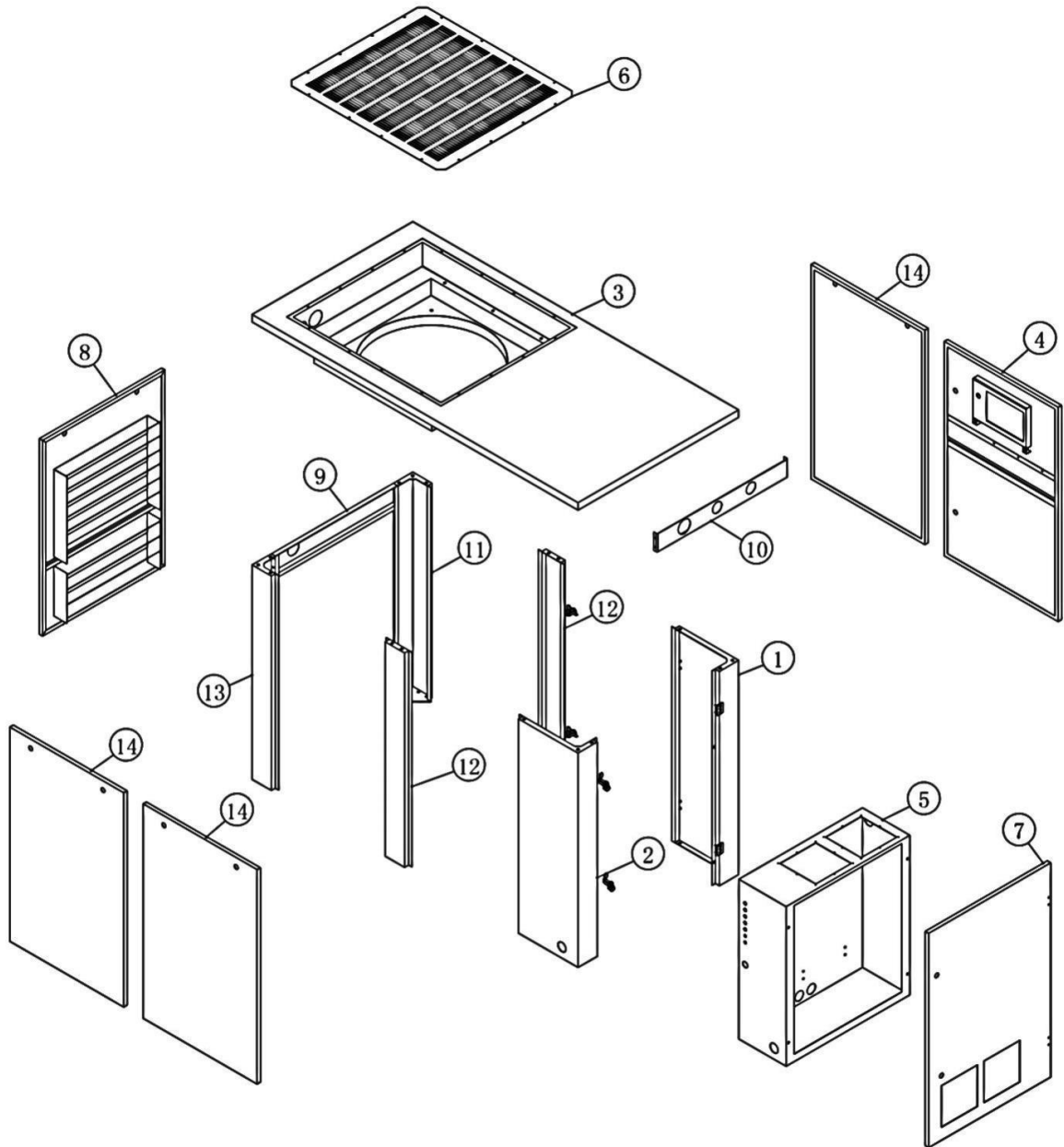
Cabinet(Fixed speed)



Cabinet (Fixed speed)

NO.	PN	DESCRIPTION	QTY	REMARK
1	17433 08001 09	Support	3	
2	17433 08002 00	Door	1	
3	91433 08003 69	Top cover	1	
4	17433 08004 00	Support	1	
5	17433 08005 09	Door	1	
6	17433 08006 09	Electric cabinet	1	
7	16330 08007 00	Top net cover	1	
8	17433 08008 09	Door	1	
9	17433 08100 09	Door	1	
10	17433 08110 09	Beam	1	
11	16330 08120 00	Cover	1	
12	17433 08130 09	Support	1	
13	17433 08140 09	Support	1	
14	17433 08150 09	Door	2	

Cabinet(VSD)

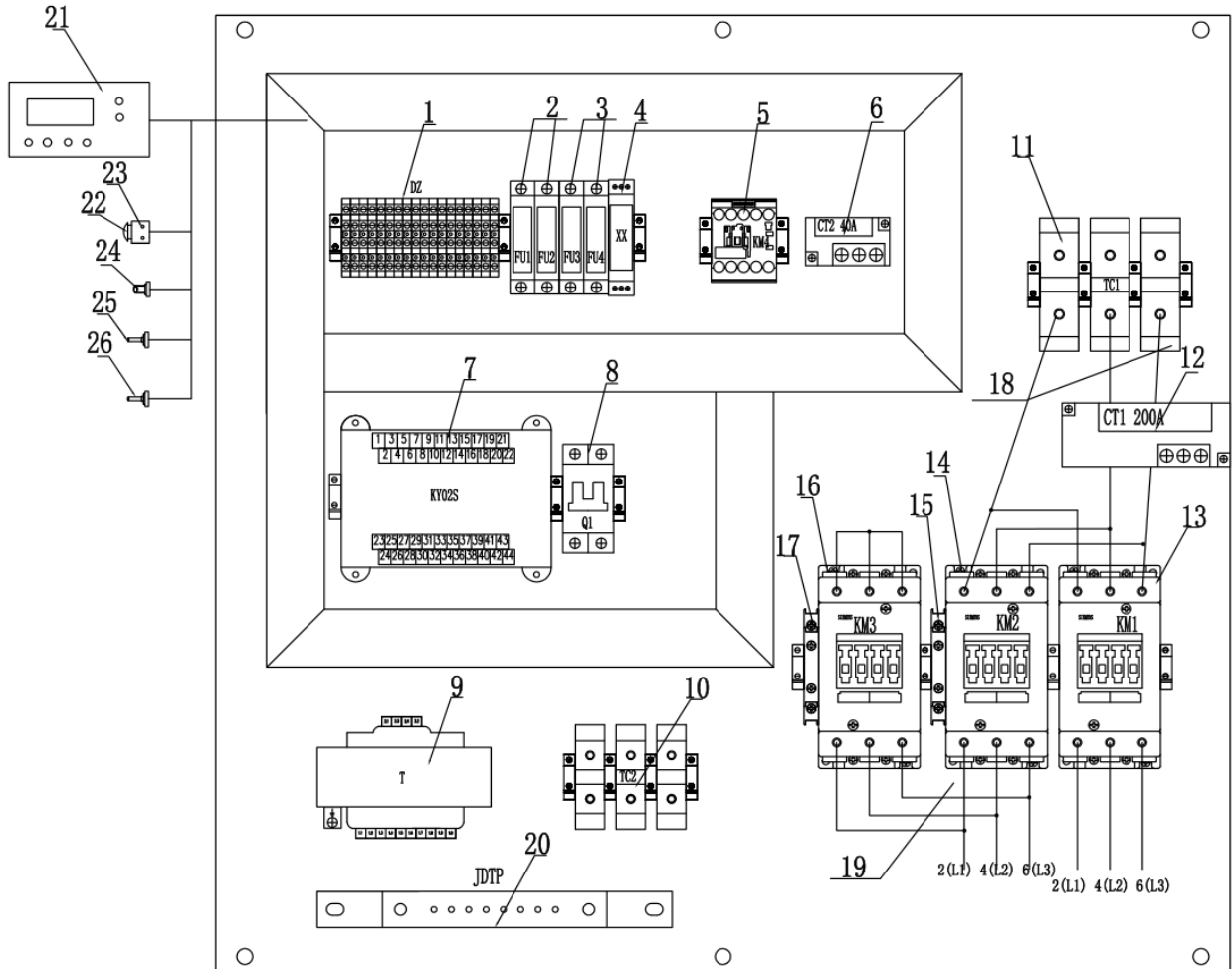


Cabinet(VSD)

NO.	PN	DESCRIPTION	QTY	REMARK
1	17439 08001 09	Support	1	
2	17439 08002 09	Support	1	
3	91244 08003 06	Top cover	1	
4	91244 08005 06	Door	1	
5	17439 08006 09	Electric cabinet	1	
6	16330 08007 00	Top net cover	1	
7	17439 08008 09	Door	1	
8	17433 08100 09	Door	1	
9	17433 08110 09	Beam	1	
10	16330 08120 00	Cover	1	
11	17439 08130 09	Support	1	
12	17433 08140 09	Support	2	
13	17439 08140 09	Support	1	
14	17433 08150 09	Door	3	
	07706 98052 00	Electrical cabinet inlet filter	2	
	07211 22081 40	Electrical cabinet fan	2	

Electrical Enclosure(Fixed speed)

(208V/230V/460V)



Electrical Enclosure(Fixed speed)

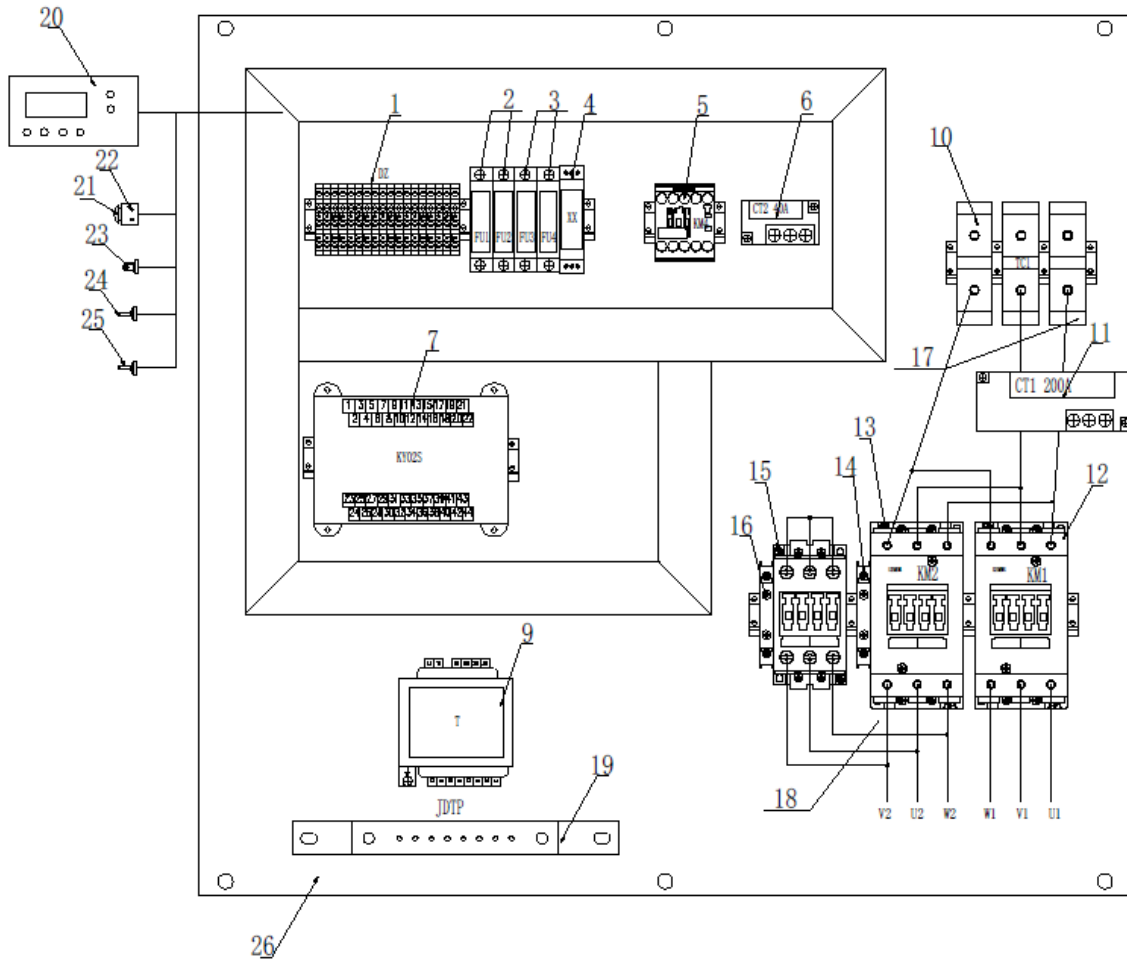
(208V/230V/460V)

NO.	PN	DESCRIPTION	QTY	REMARK
1	08703 00004 00	Terminal block	18	DZ
2	02820 00001 00	Fuse block	2	FU1-FU2
3	02820 00001 00	Fuse block	2	FU3-FU4
4	02814 00080 00	Phase protector	1	XX
5	02825 60038 00	Fan motor contactor	1	KM4
6	02824 20040 00	Fan motor transformer	1	CT2
7	02811 00220 55	Controller	1	PLC
8	02819 06526 00	Miniature circuit breaker	1	Q1
9	02818 03150 10	Transformer	1	T
10	08703 00050 00	Terminal block	3	TC2
11	08703 00095 00	Terminal block	3	TC1
12	02824 00200 00	Motor transformer	1	CT1
13	02825 60095 01	AC contactor	1	KM1
14	02825 60095 01	AC contactor	1	KM2
15	08705 35921 11	Auxiliary contact	1	FZ
16	02825 60065 01	AC contactor	1	KM3
17	08705 35921 11	Auxiliary contact	1	FZ
18	08704 01050 00	Cable	0.9M	BVR
19	08704 02035 00	Cable	1.2M	BVR
20	02829 32020 60	Grounding copper bar	1	JDTP
21	02815 00202 02	Monitor	1	XSQ
22	02827 04844 00	Emergency button	1	JT
23	02827 04104 00	Emergency button support	1	JT
24	02810 00016 00	Pressure sensor	1	DP
25	02810 10004 00	Temperature sensor	1	DT
26	02810 10004 00	Temperature sensor	1	ST
*27	02821 10004 00	Fuse	2	FU1-FU2
*28	02821 10002 00	Fuse	2	FU3-FU4

Note: * Items are not shown on the drawing.

Electrical Enclosure(Fixed speed)

(40HP/575V)



Electrical Enclosure (Fixed speed)

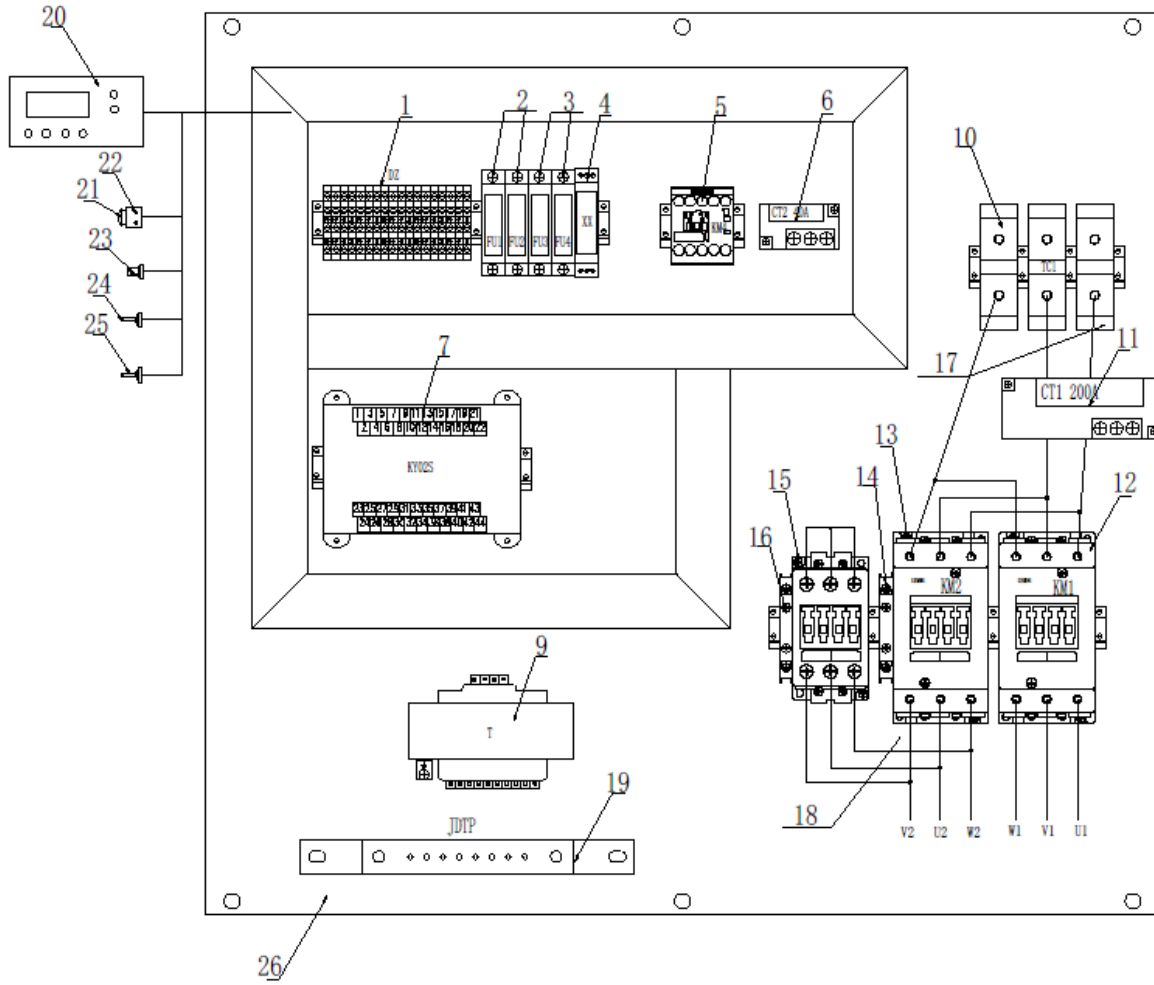
(40HP/575V)

NO.	PN	DESCRIPTION	QTY	REMARK
1	08703 00004 00	Terminal block	18	DZ
2	02820 00001 00	Fuse block	2	FU1-FU2
3	02820 00001 00	Fuse block	2	FU3-FU4
4	02814 05169 00	Phase sequence protector	1	XX
5	02825 60038 00	Fan motor contactor	1	KM4
6	02824 20040 00	Fan motor transformer	1	CT2
7	02811 00220 55	Controller	1	PLC
9	02818 01000 10	Transformer	1	T
10	08703 00050 00	Terminal block	3	TC1
11	02824 00200 00	Motor transformer	1	CT1
12	02825 60050 01	AC contactor	1	KM1
13	02825 60050 01	AC contactor	1	KM2
14	08705 35921 11	Auxiliary contact	1	FZ
15	02825 60040 01	AC contactor	1	KM3
16	08705 35921 11	Auxiliary contact	1	FZ
17	08704 06016 00	Cable	0.9M	BVR
18	08704 06010 00	Cable	1.2M	BVR
19	02829 32020 60	Grounding copper bar	1	JDTP
20	02815 00202 02	Monitor	1	XSQ
21	02827 04844 00	Emergency stop button	1	JT
22	02827 04104 00	Emergency stop button seat	1	JT
23	02810 00016 00	Pressure sensor	1	DP
24	02810 10004 00	Temperature sensor	1	DT
25	02810 10004 00	Temperature sensor	1	ST
26	08703 00004 00	Terminal block	3	DZ1
27		Electric control board	1	DKB
*28	02821 10004 00	Fuse	2	FU1-FU2
*29	02821 10002 00	Fuse	2	FU3-FU4

Note: * Items are not shown on the drawing.

Electrical Enclosure(Fixed speed)

(50HP/575V)



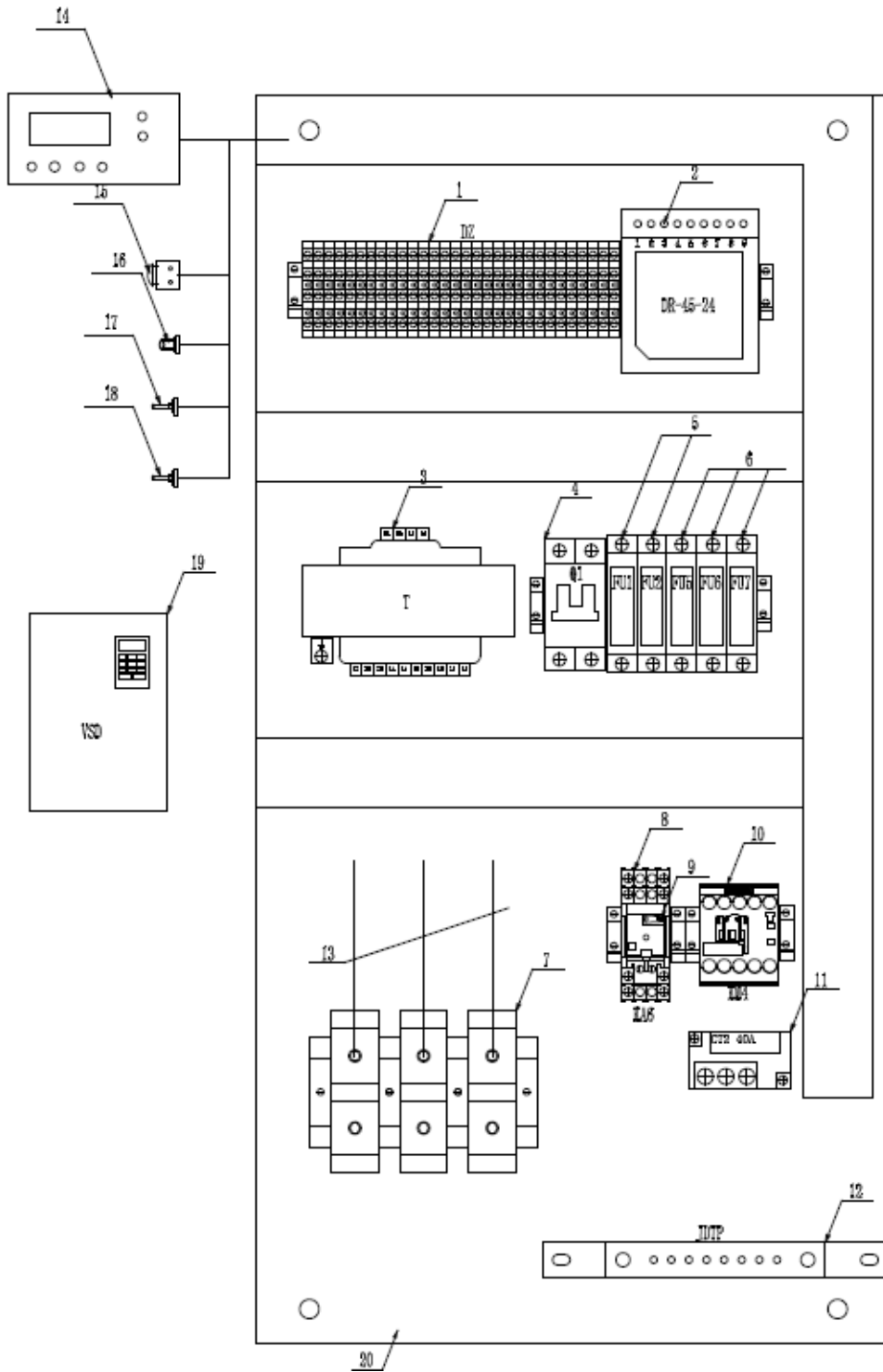
Electrical Enclosure(Fixed speed)

(50HP/575V)

NO.	PN	DESCRIPTION	QTY	REMARK
1	08703 00004 00	Terminal block	18	DZ
2	02820 00001 00	Fuse block	2	FU1-FU2
3	02820 00001 00	Fuse block	2	FU3-FU4
4	02814 05169 00	Phase sequence protector	1	XX
5	02825 60038 00	Fan motor contactor	1	KM4
6	02824 20040 00	Fan motor transformer	1	CT2
7	02811 00220 55	Controller	1	PLC
9	02818 03150 10	Transformer	1	T
10	08703 00050 00	Terminal block	3	TC1
11	02824 00200 00	Motor transformer	1	CT1
12	02825 60065 01	AC contactor	1	KM1
13	02825 60065 01	AC contactor	1	KM2
14	08705 35921 11	Auxiliary contact	1	FZ
15	02825 60050 01	AC contactor	1	KM3
16	08705 35921 11	Auxiliary contact	1	FZ
17	08704 04025 00	Cable	0.9M	BVR
18	08704 06016 00	Cable	1.2M	BVR
19	02829 32020 60	Grounding copper bar	1	JDTP
20	02815 00202 02	Monitor	1	XSQ
21	02827 04844 00	Emergency stop button	1	JT
22	02827 04104 00	Emergency stop button seat	1	JT
23	02810 00016 00	Pressure sensor	1	DP
24	02810 10004 00	Temperature sensor	1	DT
25	02810 10004 00	Temperature sensor	1	ST
26	08703 00004 00	Terminal block	3	DZ1
27		Electric control board	1	DKB
*28	02821 10004 00	Fuse	2	FU1-FU2
*29	02821 10002 00	Fuse	2	FU3-FU4

Note: * Items are not shown on the drawing.

Electrical Enclosure(VSD)



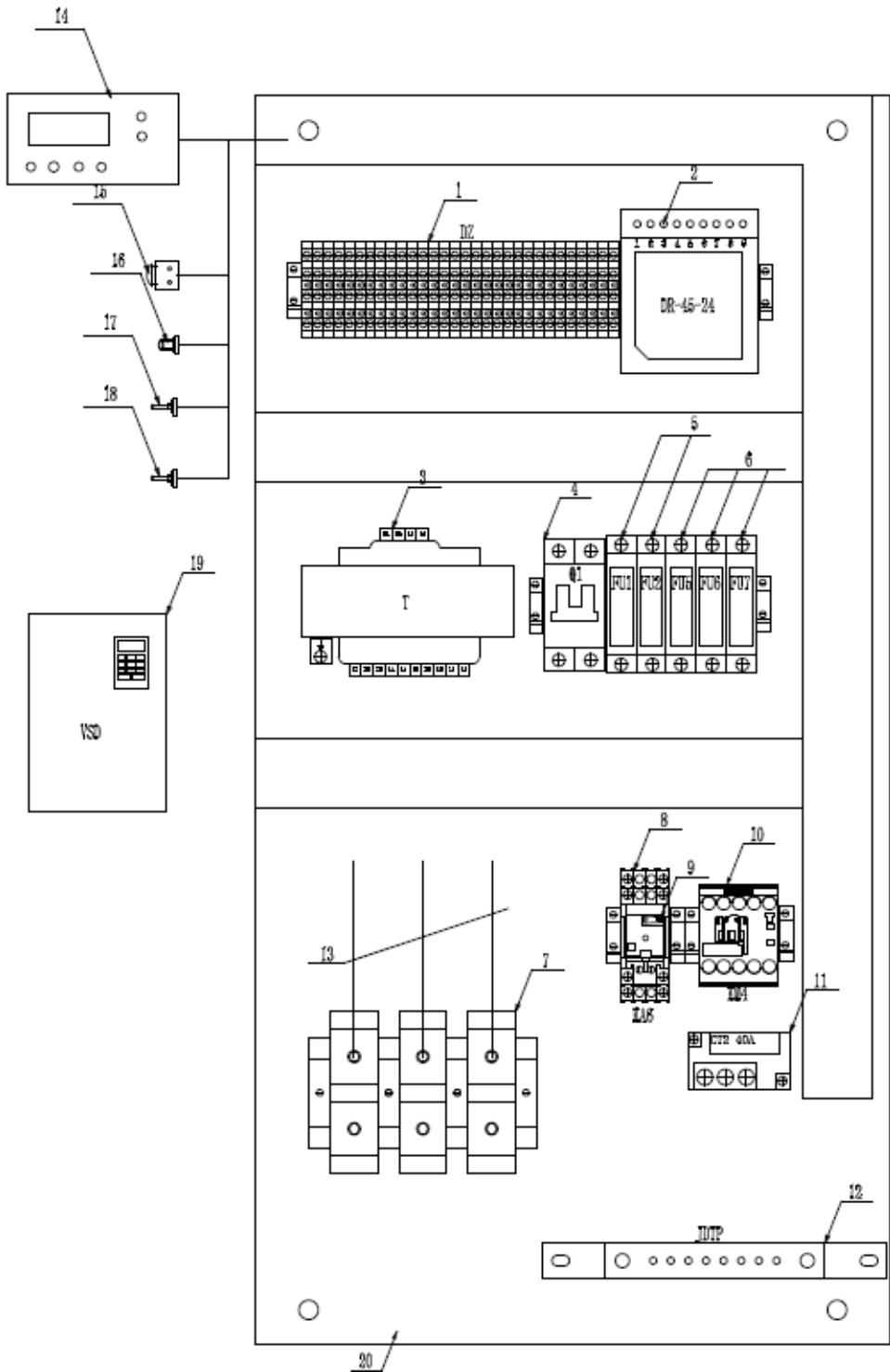
Electrical Enclosure(VSD)

(40HP/460V/VSD)

NO.	PN	DESCRIPTION	QTY	REMARK
1	08703 00004 00	TERMINAL BLOCK	30	DZ
2	02808 04524 00	POWER SWITCH	1	DR
3	02818 03150 10	TRANSFORMER	1	T
4	02819 06526 00	BREAKER	1	Q1
5	02820 00001 00	FUSE BLOCK	2	FU1-FU2
6	02820 00001 00	FUSE BLOCK	3	FU5-FU7
7	08703 00050 00	TERMINAL BLOCK	3	TC
8	02814 00002 00	INTERMEDIA RELAY SEAT	1	KA6
9	02814 01102 00	INTERMEDIA RELAY HEAD	1	KA6
10	02825 60038 00	FAN MOTOR CONTACTOR	1	KM4
11	02824 20040 00	FAN MOTOR CURRENT TRANSFORMER	1	CT2
12	02829 32020 60	GROUNDING COPPER BAR	1	JDTP
13	08704 04025 00	CABLE	1.8M	BVR
14	02811 15152 47	MONITOR	1	XSQ
15	02827 04844 00	EMERGENCY BUTTON	1	JT
	02827 04104 00	Emergency button support	1	
16	02810 01082 00	PRESSURE SENSOR	1	DP
17	02810 04001 07	TEMP. SENSOR	1	DT
18	02810 04001 07	TEMP. SENSOR	1	ST
19	02828 04075 01	INVERTER	1	VSD
20	16423 09008 02	ELECTRIC PLATE	1	DKB
*21	02821 10006 00	FUSE	2	FU1-FU2
*22	02821 10002 00	FUSE	3	FU5-FU7

Note: * Items are not shown on the drawing.

Electrical Enclosure(VSD)



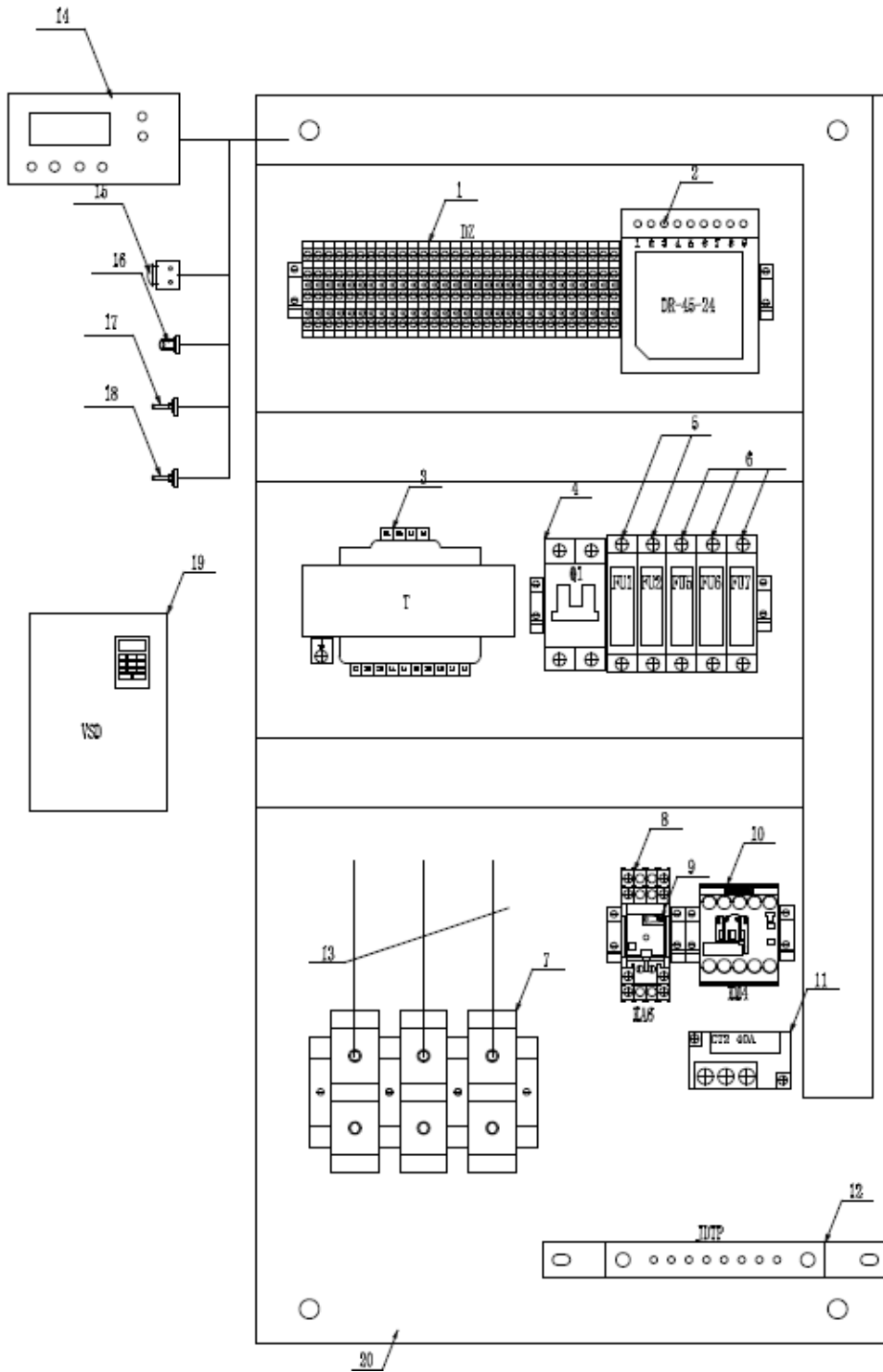
Electrical Enclosure(VSD)

(50HP/460V/VSD)

NO.	PN	DESCRIPTION	QTY	REMARK
1	08703 00004 00	TERMINAL BLOCK	30	DZ
2	02808 04524 00	POWER SWITCH	1	DR
3	02818 03150 10	TRANSFORMER	1	T
4	02819 06526 00	BREAKER	1	Q1
5	02820 00001 00	FUSE BLOCK	2	FU1-FU2
6	02820 00001 00	FUSE BLOCK	3	FU5-FU7
7	08703 00050 00	TERMINAL BLOCK	3	TC
8	02814 00002 00	INTERMEDIA RELAY SEAT	1	KA6
9	02814 01102 00	INTERMEDIA RELAY HEAD	1	KA6
10	02825 60038 00	FAN MOTOR CONTACTOR	1	KM4
11	02824 20040 00	FAN MOTOR CURRENT TRANSFORMER	1	CT2
12	02829 32020 60	GROUNDING COPPER BAR	1	JDTP
13	08704 04025 00	CABLE	1.8M	BVR
14	02811 15152 47	MONITOR	1	XSQ
15	02827 04844 00	EMERGENCY BUTTON	1	JT
	02827 04104 00	Emergency button support	1	
16	02810 01082 00	PRESSURE SENSOR	1	DP
17	02810 04001 07	TEMP. SENSOR	1	DT
18	02810 04001 07	TEMP. SENSOR	1	ST
19	02828 04089 00	INVERTER	1	VSD
20	16423 09008 02	ELECTRIC PLATE	1	DKB
*21	02821 10006 00	FUSE	2	FU1-FU2
*22	02821 10002 00	FUSE	3	FU5-FU7

Note: * Items are not shown on the drawing

Electrical Enclosure(VSD)



Electrical Enclosure(VSD)

(50HP/575V/VSD)

NO.	PN	DESCRIPTION	QTY	REMARK
1	08703 00004 00	TERMINAL BLOCK	30	DZ
2	02808 04524 00	POWER SWITCH	1	DR
3	02818 03150 10	TRANSFORMER	1	T
4	02819 06526 00	BREAKER	1	Q1
5	02820 00001 00	FUSE BLOCK	2	FU1-FU2
6	02820 00001 00	FUSE BLOCK	3	FU5-FU7
7	08703 00050 00	TERMINAL BLOCK	3	TC
8	02814 00002 00	INTERMEDIA RELAY SEAT	1	KA6
9	02814 01102 00	INTERMEDIA RELAY HEAD	1	KA6
10	02825 60038 00	FAN MOTOR CONTACTOR	1	KM4
11	02824 20040 00	FAN MOTOR CURRENT TRANSFORMER	1	CT2
12	02829 32020 60	GROUNDING COPPER BAR	1	JDTP
13	08704 04025 00	CABLE	1.8M	BVR
14	02811 15152 67	MONITOR	1	XSQ
15	02827 04844 00	EMERGENCY BUTTON	1	JT
	02827 04104 00	Emergency button support	1	
16	02810 01082 00	PRESSURE SENSOR	1	DP
17	02810 04001 07	TEMP. SENSOR	1	DT
18	02810 04001 07	TEMP. SENSOR	1	ST
19	02828 35062 00	INVERTER	1	VSD
20	16423 09008 02	ELECTRIC PLATE	1	DKB
*21	02821 10006 00	FUSE	2	FU1-FU2
*22	02821 10002 00	FUSE	3	FU5-FU7

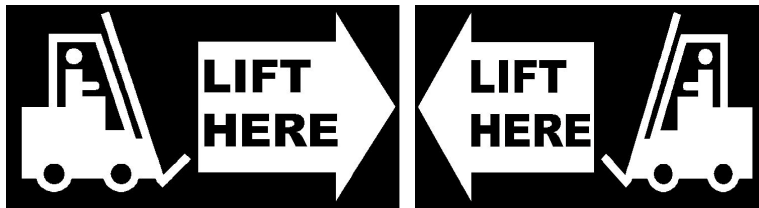
Note: * Items are not shown on the drawing

Decals

Decals information is shown as following.



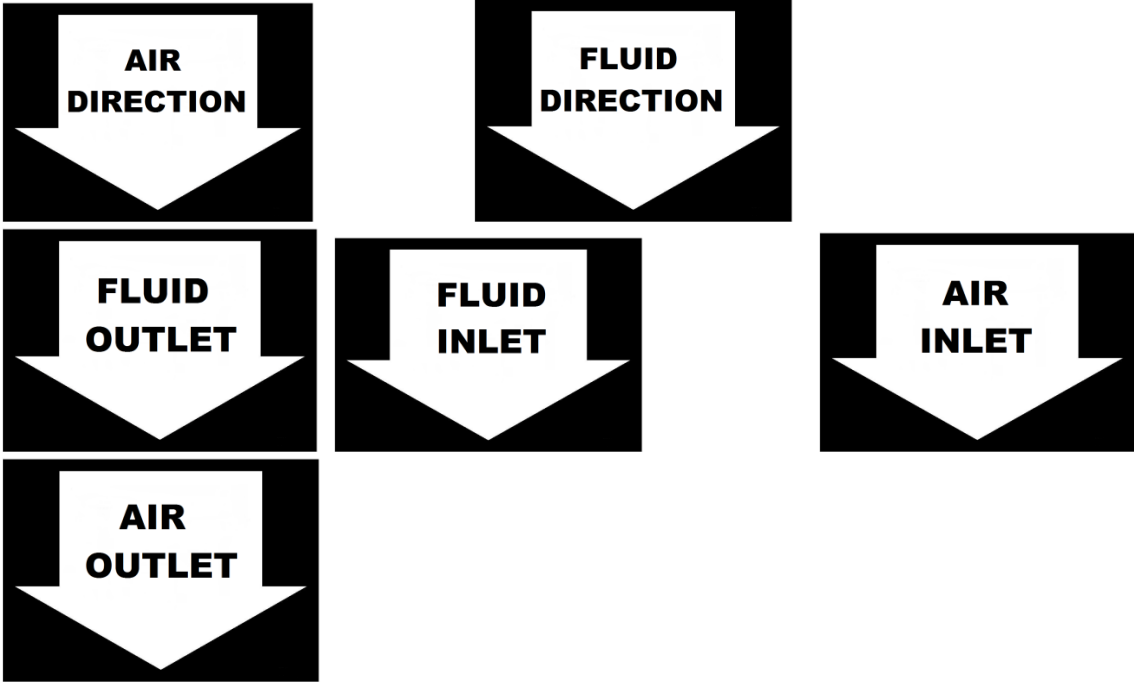
Decals



NOTE:

1. DECALS P/N : 142939

Decals



NOTE:

- 1. DECALS P/N : 142939

Standard Terms and Conditions

These terms and conditions govern the sale of Products (“Rotary Screw Air Compressors and parts”) and provisions of services by Kaishan Technologies Compressor Co. Ltd (Seller) and its authorized representative or buyer. These terms and conditions (“Agreement”) take precedence over Buyer’s supplemental or conflicting terms and conditions to which notice of objection is hereby given. Neither Seller’s commencement of performance or delivery shall be deemed or construed as acceptance of Buyer’s supplemental or conflicting terms and conditions. Kaishan Technologies Compressor’s failure to object to conflicting or additional terms will not change or add to the terms of this agreement. Buyer’s acceptance of the Products and/or Services from Seller shall be deemed to constitute acceptance of the terms and conditions contained herein.

Orders: All orders placed by Buyer are subject to acceptance by Seller. Orders may not be canceled or rescheduled without Seller’s written consent. All orders must identify the products, unit quantities, part numbers, applicable prices and requested delivery dates of the Products being purchased. Seller may at its sole discretion allocate Product among its Buyer. Seller may designate certain Products and Services as non-cancelable, non-returnable and the sale of such Products shall be subject to the special terms and conditions contained in Seller’s Customer Acknowledgement or Non-Returnable Product Form, which shall prevail and supersede any inconsistent terms and conditions contained herein or elsewhere.

Prices: The prices of the Products are those prices specified on the front of the invoice or contained within an agreed written contract. Price quotations shall automatically expire in thirty (30) days from the date issued, or as otherwise stated in the quotation.

Taxes: Unless otherwise agreed to in writing by Seller, all prices quoted are exclusive of transportation and insurance costs, duties, and all taxes including federal, state and local sales, excise and value added, goods and services taxes, and any other taxes. Buyer agrees to indemnify and hold Seller harmless for any liability for tax in connection with the sale, as well as the collection or withholding thereof, including penalties and interest thereon. When applicable, transportation and taxes shall appear as separate items on Seller’s invoice.

Payment: Payment may be made by check, money order, credit card, or wire transfer (all fees are borne by the Buyer). Where Seller has extended credit to Buyer, terms of payment shall be net thirty (30) days from date of invoice, without offset or deduction. On any past due invoice, Seller may impose a monthly interest rate. If Buyer fails to make the required payments the Seller will impose the interest rate each month. If Buyer fails to make each payment when it is due, Seller reserves the right to withdraw credit and thereby suspend or cancel performance under any or all purchase orders or agreements in which Seller has extended credit to Buyer. In the event of default by Buyer, Seller shall be entitled to costs, fees, and expenses including but not limited to recovery of attorney fees, court costs and fees, and collections costs.

Standard Terms and Conditions

Delivery and Title: The locations of shipment delivery will be made according to the Seller and Buyer agreement. Title and risk of loss pass to the Buyer upon delivery of the Product to the carrier. Seller's delivery dates are estimates only and Seller is not liable for delays in delivery or for failure to perform due to causes beyond the reasonable control of the Seller, nor shall the carrier be deemed an agent of the Seller. A delayed delivery of any part of an Order does not entitle Buyer to cancel other deliveries. Kaishan Technologies Compressor will comply with various federal, state and local laws and regulation concerning occupational health, safety and environment concerns. Buyer has full responsibility to comply with those laws and regulations during the installation and operation of the equipment.

Acceptance / Returns: Shipments will be deemed to have been accepted by Buyer upon delivery of the said shipments to Buyer unless rejected upon receipt. Buyer shall perform all inspections and tests. Buyer deems necessary as promptly as possible but in no event later than 7 days after receipt of Products, at which time Buyer will be deemed to have irrevocably accepted the Products. Any discrepancy in shipment quantity must be reported within 7 days after receipt of Products. Buyer may not return Products without a Return Material Authorization ("RMA") number. RMA's valid for 30 days from the date issued.

Standard Warranty: Buyer will honor Product warranties and indemnities authorized by the manufacturer, including any transferable. 90 days warranty is given for service parts from receipt date. Seller warrants to Buyer that Products purchased hereunder will conform to the applicable manufacturer's specifications for such products and that any value-added work performed by Seller on such Products will conform to applicable Buyer's specifications. If Seller breaches this warranty, Buyer's remedy is limited to (at Seller's election) (1) refund of Buyer's purchase price for such Product (without interest), (2) repair of such Products, or (3) replacement of such Products provided that such Products must be returned to Seller, along with acceptable evidence of purchase within 13 days from date of delivery, transportation charges prepaid. No warranty will apply if the Product has been subject to misuse, neglect, accident or modification.

Limitation of Liabilities: Buyer shall not be entitled to, and Seller shall not be liable for, loss of profit or revenue, promotional or manufacturing expenses, overheads expenses, business interruption cost, loss of data, removal or reinstallation costs, injury to reputation of buyer, punitive damages, loss of contractor orders or any indirect, special, incidental or consequential damages of any nature. Buyer's recovery from seller for any claim shall not exceed the purchase price paid for the affected products irrespective of the nature of the claim whether in contract, tort, warranty, or otherwise. Buyer will indemnify, defend and hold seller harmless from any claims based on (a) Seller's compliance with buyer's designs, specifications, or instructions, (b) Modification of any products by anyone other than Seller, or (c) use in combination with other products not supplied by seller.

Standard Terms and Conditions

Use of Products: Unless otherwise specified. Products sold by Seller are not designed, intended or authorized for use in life support, life sustaining, nuclear, or other applications in which the failure of such Products could reasonably be expected to result in personal injury, loss of life or catastrophic property damage. If buyer uses or sales the Products for use in any such applications: (1) Buyer acknowledges that such use or sale is at Buyer's sole risk; (2) Buyer agrees that Seller and the manufacturer of the Products are not liable, in whole or in part, for any claim or damage arising from such use; and (3) Buyer agrees to indemnify, defend and hold Seller and the manufacturer of the Products harmless from and against any and all claims, damages, losses, costs, expenses and liabilities arising out of or in connection with such use or sale.

Force Majeure: Seller is not liable for failure to fulfill its obligations for any accepted Order or for delays in delivery due to causes beyond Seller's reasonable control including, but not limited to, acts of God, natural or artificial disaster, riot, war, strike, delay by carrier, shortage of Product, acts or omissions of other parties, acts or omissions of civil or military authority, Government priorities, changes in law, material shortages, fire, strikes, floods, epidemics, quarantine restrictions, acts of terrorism, delays in transportation or inability to obtain labor, materials or products through its regular sources, which shall be considered as an event of force majeure excusing Seller from performance and barring remedies for non-performance. In an event of force majeure condition, the Seller's time for performance shall be extended for a period equal to the time lost as a consequence of the force majeure condition without subjecting Seller to any liability or penalty. Seller may, at its option, cancel the remaining performance, without any liability or penalty, by giving notice of such cancellation to the Buyer.

General: (a) Seller will comply with state law for any dispute from buyer. (b) Buyer may not assign this Agreement without the prior written consent of Seller. Seller or its affiliates may perform the obligations under this Agreement. This Agreement is binding on successor and assigns, (c) Products, including software or other intellectual property, are subject to any applicable rights of third parties, such as patents, copyrights and/or user licenses.

Appendix

(If your machine is standard, this page is blank.)

Contact Information

Kaishan Compressor, LLC.,
Add.: 15445 Industrial Park Dr. Loxley, AL, Post code: 36551
Office number: +1 251-202-0577
www.KaishanUSA.com