



SRP3008 230V PD 50/60Hz - Single phase
814.0384-0

ATTENTION: This drawing is a SCHULZ COMPRESSORES Ltda property.
All rights reserved. It is not allowed to copy its content without authorization.
If you have any doubt, please contact Products Department of Schulz Compressors.

| | | | | | | | |
|-----------|--------|-------------|-------|-----|------------|------|-----------------|
| --- | --- | --- | --- | --- | --- | --- | --- |
| --- | --- | --- | --- | --- | --- | --- | --- |
| --- | --- | --- | --- | --- | --- | --- | --- |
| --- | --- | --- | --- | --- | --- | --- | --- |
| --- | --- | --- | --- | --- | --- | --- | --- |
| --- | --- | --- | --- | --- | --- | --- | --- |
| --- | --- | --- | --- | --- | --- | --- | --- |
| --- | --- | --- | --- | --- | --- | --- | --- |
| --- | --- | --- | --- | --- | --- | --- | --- |
| --- | --- | --- | --- | --- | --- | --- | --- |
| CARLOS.BR | 00 | ANDERSON.SE | --- | --- | 08/05/2020 | --- | DRAWING RELEASE |
| APPROVED | S.A.P. | Nº | DRAWN | PG | CO | DATE | CHANGEMENT |
| REVIEW | | | | | | | |

SRP3008 230V PD 50/60Hz - Single phase



| | | | | | |
|----------|-------------|------------|------------------|-------------|------------|
| | NAME | DATE | Title Page | Scale: 1: 1 | |
| DRAWN | ANDERSON.SE | 25/09/2020 | | | |
| CHECKED | IDERALDO.CO | 08/05/2020 | | | |
| APPROVED | CARLOS.BR | 12/05/2020 | CODE: 814.0384-0 | | PAGE 1 / 5 |

ATTENTION: This drawing is a SCHULZ COMPRESSORES Ltda property. All rights reserved. Is not allowed to copy its content without authorization. If you have any doubt, please contact Products Department of Schulz Compressors.

| Component | Description |
|-----------|----------------------------------|
| K1 | Contactor Line |
| K2 | Contactor Delta |
| K3 | Contactor Star |
| K4 | Contactor Fan |
| K5 | Contactor Dryer |
| K6 | Contactor Fan Enclosure Electric |
| KA1 | Contactor Auxiliary 1 |
| KA2 | Contactor Auxiliary 2 |
| KA3 | Contactor Auxiliary 3 |
| KA4 | Contactor Auxiliary 4 |
| M1 | Main motor |
| M2 | Dryer fan (cooler) |
| M3 | Hermetic compressor motor |
| M4 | Fan dryer |
| M5 | Electric panel fan |
| M6 | Electric panel fan |
| FT1 | Overload relay / main motor |
| FT2 | Overload relay / fan cooler |
| QN | 1-pole circuit breaker |
| QN | 2 poles circuit breaker |
| FN | Command fuse |

| Component | Description |
|-----------|---|
| 1X0 | Power terminal |
| 1X1 | Control terminal / 24 VCA |
| 1X2 | Control terminal / 220 VCA |
| XSN | Bar terminal |
| TN | Transformer Control |
| B1 | Emergency stop |
| Y1 | Intake solenoid valve |
| Y2 | Solenoid valve for modulating control |
| Y3 | Solenoid valve, slow relief / pneumatic retention |
| PURG | Electronic condensate drain |
| KSFF | Phase fault and sequence relay |
| KTN | Timer relay |
| H | Hour meter |
| HN | Signal lamp |
| TR1 | Thermometer / thermostat |
| P1 | Load / Unload pressures switch |
| P2 | Unload pressure switch |
| P3 | Safety pressure switch |
| P4 | Low pressure switch |
| TP1 | Delivery pressure transducer |
| TP2 | Internal pressure transducer |

| Component | Description |
|-----------|--|
| TMP1 | Discharge temperature sensor |
| TMP2 | Dryer temperature sensor |
| KP1 | PTC relay |
| S1 | Start button compressor / dryer |
| S2 | Stop button compressor / dryer |
| QN | Switch disconnecter / 3 poles |
| FTN | Overload relay |
| CE1 | Compressor electronic controller |
| CE2 | Dryer electronic controller |
| G1 | Softstarter |
| A1 | Frequency converter |
| PWM | PWM 4 ... 20ma converter |
| PV | Fan pressure switch (dryer) |
| PA | High pressure switch (dryer) |
| PB | Low pressure switch (dryer) |
| TK | Fan overload switch |
| IM | Indicator DE Maintenance |
| R1 | Heating resistance / main motor |
| E1 | Heating resistance / hermetic compressor |
| RFO | Oil filter restriction |
| RFA | Air filter restriction |

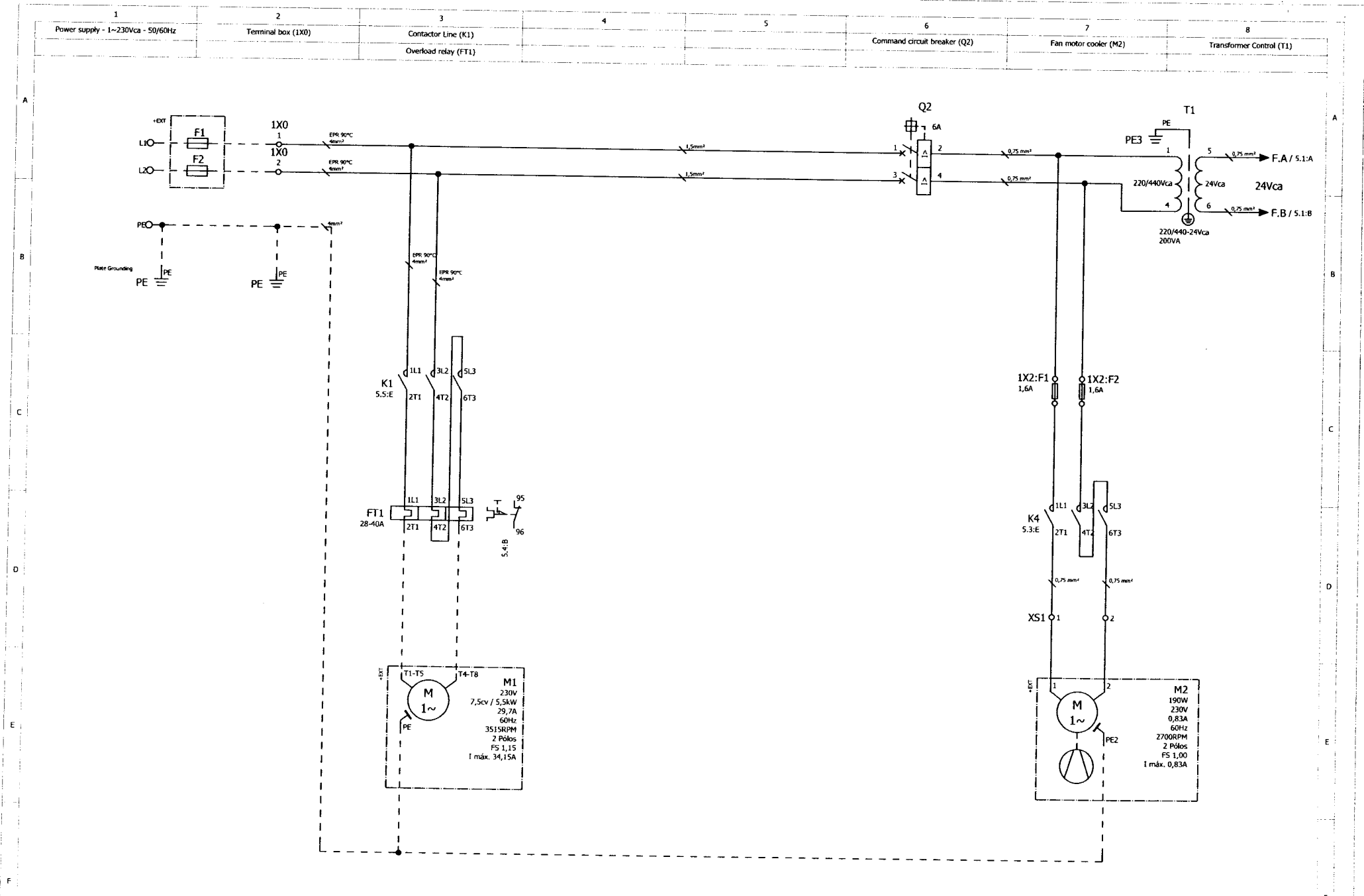
SCHULZ
SRP3008 230V PD 50/60Hz - Single phase



| | NAME | DATE |
|----------|-------------|------------|
| DRAWN | ANDERSON,SE | 25/09/2020 |
| CHECKED | IDERALDO,CO | 08/05/2020 |
| APPROVED | CARLOS,BR | 12/05/2020 |

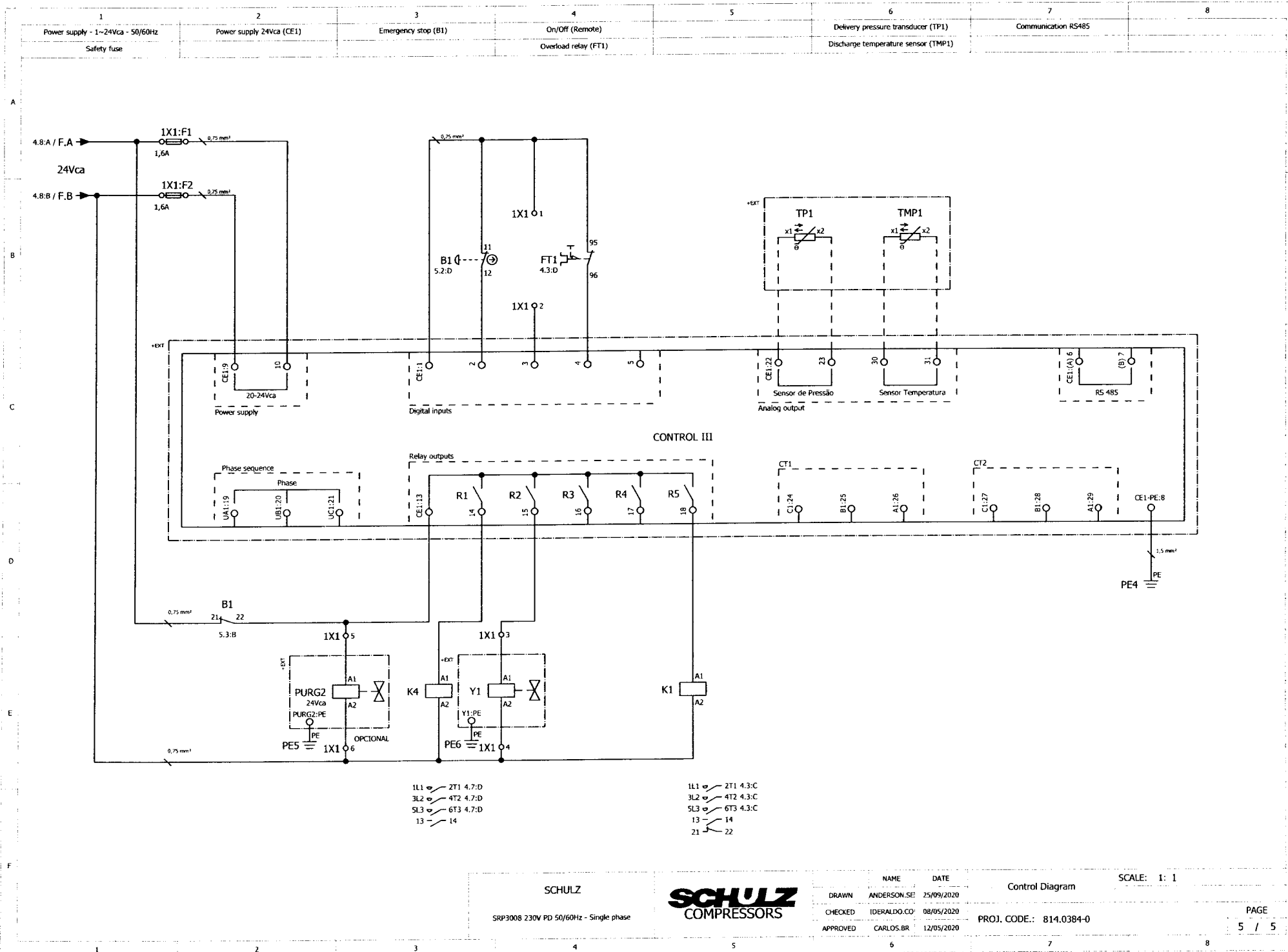
| Legend | SCALE: 1: 1 | PAGE |
|-------------------------|-------------|-------|
| PROJ. CODE.: 814.0384-0 | | 3 / 5 |

ATTENTION: This drawing is a SCHULZ COMPRESSORES Ltda property.
 All rights reserved. It is not allowed to copy its content without authorization.
 If you have any doubt, please contact Products Department of Schulz Compressors.



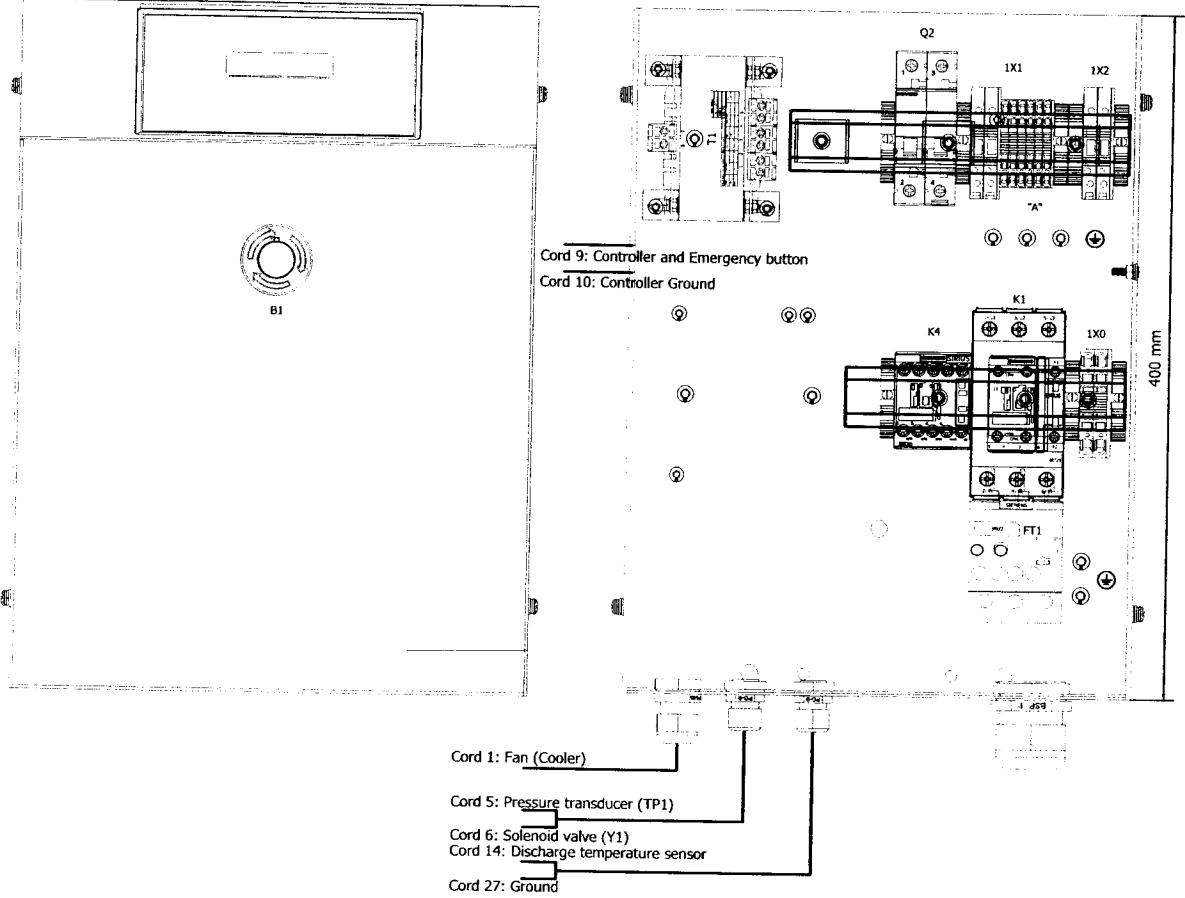
| | | | | | |
|--|--|----------|-------------|---------------|-------------------------|
| SCHULZ | | NAME | DATE | Power Diagram | SCALE: 1: 1 |
| SRP3008 230V PD 50/60Hz - Single phase | | DRAWN | ANDERSON.SE | 25/09/2020 | |
| | | CHECKED | IDERALDO.CO | 08/05/2020 | |
| | | APPROVED | CARLOS.BR | 12/05/2020 | PROJ. CODE.: 814.0384-0 |
| | | | | | PAGE |
| | | | | | 4 / 5 |

ATTENTION: This drawing is a SCHULZ COMPRESSORES Ltda property.
 All rights reserved. Is not allowed to copy its content without authorization.
 If you have any doubt, please contact Products Department of Schulz Compressors.



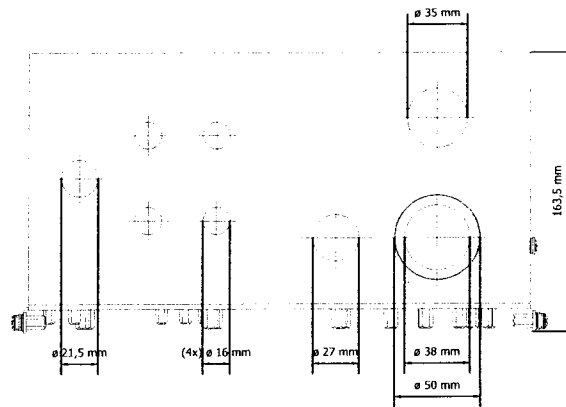
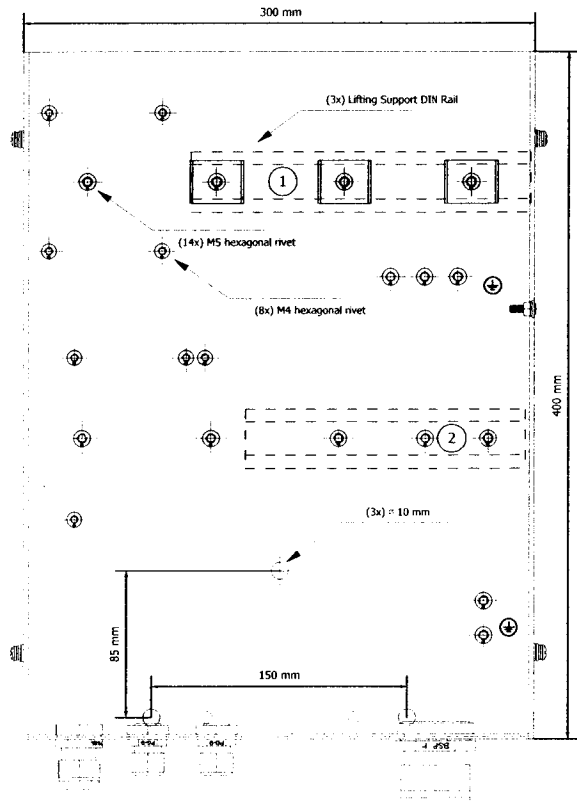
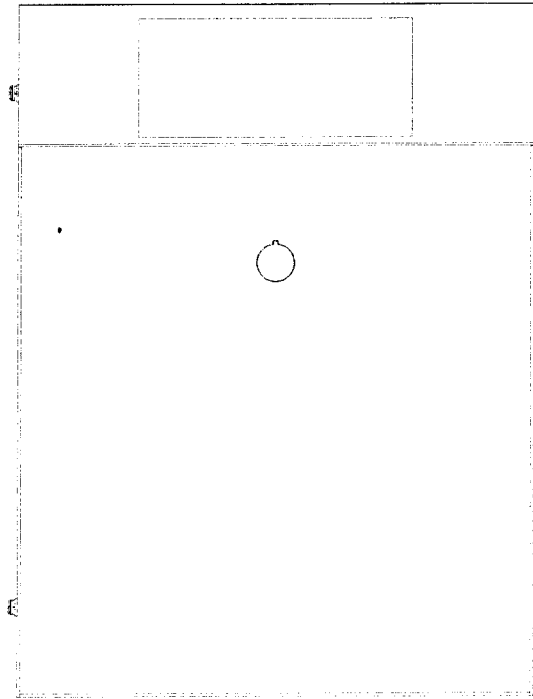
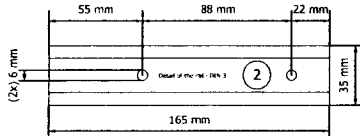
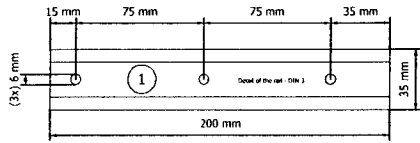
ATTENTION: This drawing is a SCHULZ COMPRESSORES Ltda property.
 All rights reserved. Is not allowed to copy its content without authorization.
 If you have any doubt, please contact Products Department of Schulz Compressors.

009.0319-0



| | | | | | |
|--|--|----------|------------------------|-------------------------|-------------|
| SCHULZ | | NAME | DATE | Panel Layout | SCALE: 1: 3 |
| SRP3008 230V PD 50/60Hz - Single phase | | DRAWN | ANDERSON.SE 25/09/2020 | | |
| | | CHECKED | IDERALDO.CO 08/05/2020 | PROJ. CODE.: 814.0384-0 | PAGE |
| | | APPROVED | CARLOS.BR 12/05/2020 | | 6 / 5 |

ATTENTION: This drawing is a SCHULZ COMPRESSORES Ltda property. All rights reserved. Is not allowed to copy its content without authorization. If you have any doubt, please contact Products Department of Schulz Compressors.



SCHULZ

SRP3008 230V PD 50/60Hz - Single phase

SCHULZ
COMPRESSORES

| | NAME | DATE |
|----------|-------------|------------|
| DRAWN | ANDERSON,SE | 25/09/2020 |
| CHECKED | IDERALDO,CO | 08/05/2020 |
| APPROVED | CARLOS,BR | 12/05/2020 |

Mounting Plate Layout

SCALE: 1: 3

PROJ. CODE.: 814.0384-0

PAGE
7 / 5

ATTENTION: This drawing is a SCHULZ COMPRESSORES Ltda property. All rights reserved. Is not allowed to copy its content without authorization. If you have any doubt, please contact Products Department of Schulz Compressors.

| Item | Project tags | Description | Manufacturer's code | Schulz code | Manufacturer | Quantity |
|------------|-----------------|---|--|-------------|--------------|----------|
| 1 | 009.0319-0 | Base panel, Assembly, SRP 3005/3040 Compact | Base panel, Assembly, SRP | 009.0319-0 | USIMETAL | 1 |
| 2 | B1 | Emergency stop, Line BESG | Emergency stop, Line BESG | 012.1892-0 | WEG | 1 |
| 3;4 | B1 | NC contact, Emergency stop, Line BESG | NC contact, Emergency stop, | 012.1899-0 | WEG | 2 |
| 5 | FT1 | Overload relay, 28 - 40A, Size S2 | Overload relay, 28 - 40A, Size | 012.1957-0 | SIEMEN | 1 |
| 6 | K1 | Contactor, 40A, 24V AC | Contactor, 40A, 24V AC | 012.1929-0 | SIEMEN | 1 |
| 7 | K1 | Surge suppressor, RC network, Size S2, 24/48V AC | Surge suppressor, RC network, | 012.1948-0 | SIEMEN | 1 |
| 11;14;17 | 1X0...1X2;K1;Q2 | End bracket, gray color | End bracket, gray color | 012.1341-0 | WEG | 8 |
| 8 | K4 | Contactor, 7A, 24 V AC | Contactor, 7A, 24 V AC | 012.1923-0 | SIEMEN | 1 |
| 9 | K4 | Surge suppressor, RC network, Size S00, 24/48V AC | Surge suppressor, RC network, | 012.1947-0 | SIEMEN | 1 |
| 10 | Q2 | Miniature circuit-breaker, two-pole, 6A, C | Miniature circuit-breaker, | 012.1962-0 | SIEMEN | 1 |
| 17 | T1 | Transformer Control, 200VA, 220/440 - 24V, 50/60Hz | Transformer Control, 200VA, | 012.2069-0 | PÓLUX | 1 |
| 13;15 | 1X0 | Terminal, Gray color, 6mm ² | Terminal, Gray color, 6mm ² | 012.1337-0 | WEG | 2 |
| 16 | 1X0 | End cover, Terminal, Gray color, 6mm ² | End cover, Terminal, Gray color, | 012.1366-0 | WEG | 1 |
| 18;20...24 | 1X1 | Terminal, Gray color, 2,5mm ² | Terminal, Gray color, 2,5mm ² | 012.1336-0 | WEG | 6 |
| 25 | 1X1 | End cover, Terminal, Gray color, 2,5mm ² | End cover, Terminal, Gray color, | 012.1342-0 | WEG | 1 |
| 27;29;32 | 1X1;1X2 | Fused terminal, gray color, 2,5mm ² | Fused terminal, gray color, | 012.1339-0 | WEG | 4 |
| 28;30;33 | 1X1;1X2 | Single safety fuse, 1,6A, delayed, 5 X 20mm | Single safety fuse, 1,6A, | 012.1622-0 | STP | 4 |
| 31;37 | 1X1;1X2 | End cover, Fused terminal, gray color, 2,5mm ² | End cover, Fused terminal, gray | 012.1386-0 | WEG | 2 |
| | | | | | | |
| | | | | | | |
| | | | | | | |
| | | | | | | |
| | | | | | | |
| | | | | | | |
| | | | | | | |
| | | | | | | |
| | | | | | | |
| | | | | | | |
| | | | | | | |
| | | | | | | |
| | | | | | | |
| | | | | | | |

SCHULZ
SRP3008 230V PD 50/60Hz - Single phase



| | NAME | DATE |
|----------|--------------|------------|
| DRAWN | ANDERSON, SE | 25/09/2020 |
| CHECKED | IDERALDO, CO | 08/05/2020 |
| APPROVED | CARLOS, BR | 12/05/2020 |

Part List
PROJ. CODE.: 814.0384-0

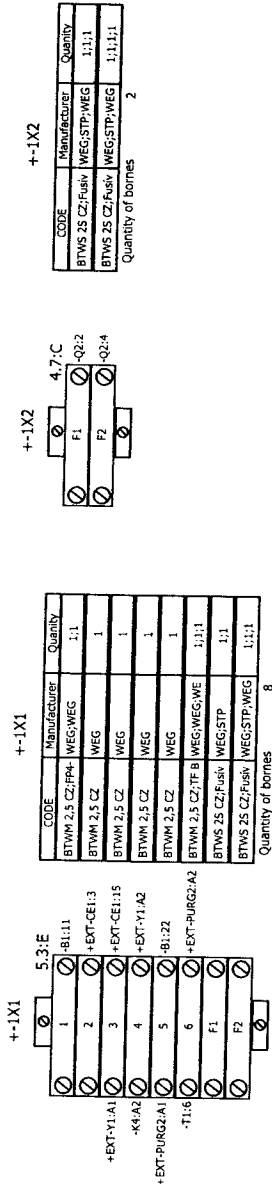
SCALE: 1: 1

ATTENTION: This drawing is a SCHULZ COMPRESSORES Ltda property.
All rights reserved. Is not allowed to copy its content without authorization.
If you have any doubt, please contact Products Department of Schulz Compressors.

| 1 | 2 | 3 | 4 |
|--------------|--|---|---|
| Project tags | Description | | |
| 009.0319-0 | Base panel, Assembly, SRP 3005/3040 Compact | | |
| B1 | Emergency stop, Line BESH | | |
| FT1 | Overload relay, 28 - 40A, Size S2 | | |
| K1 | Contactor, 40A, 24V AC | | |
| K4 | Contactor, 7A, 24 V AC | | |
| Q2 | Miniature circuit-breaker, two-pole, 6A, C | | |
| T1 | Transformer Control, 200VA, 220/440 - 24V, 50/60Hz | | |
| 1X0 | Terminal, Gray color, 6mm ² | | |
| 1X0 | Terminal, Gray color, 6mm ² | | |
| 1X1 | Terminal, Gray color, 2,5mm ² | | |
| 1X1 | Terminal, Gray color, 2,5mm ² | | |
| 1X1 | Terminal, Gray color, 2,5mm ² | | |
| 1X1 | Terminal, Gray color, 2,5mm ² | | |
| 1X1 | Terminal, Gray color, 2,5mm ² | | |
| 1X1 | Terminal, Gray color, 2,5mm ² | | |
| 1X1 | Fused terminal, gray color, 2,5mm ² | | |
| 1X1 | Fused terminal, gray color, 2,5mm ² | | |
| 1X2 | Fused terminal, gray color, 2,5mm ² | | |
| 1X2 | Fused terminal, gray color, 2,5mm ² | | |
| | | | |
| | | | |
| | | | |
| | | | |
| | | | |
| | | | |
| | | | |
| | | | |
| | | | |
| | | | |
| | | | |
| | | | |
| | | | |

| 5 | 6 | 7 | 8 |
|--------------|-------------|---|---|
| Project tags | Description | | |
| | | | |
| | | | |
| | | | |
| | | | |
| | | | |
| | | | |
| | | | |
| | | | |
| | | | |
| | | | |
| | | | |
| | | | |
| | | | |
| | | | |
| | | | |
| | | | |
| | | | |
| | | | |
| | | | |
| | | | |
| | | | |
| | | | |
| | | | |
| | | | |

ATTENTION: This drawing is a SCHULZ COMPRESSORES Ltda property. All rights reserved. Is not allowed to copy its content without authorization. If you have any doubt, please contact Products Department of Schulz Compressors.



SCHULZ
SRP3008 230V PD 50/60Hz - Single phase



| NAME | DATE | Terminal Diagram | SCALE: 1: 1 |
|---------------------|------------|-------------------------|-------------|
| DRAWN ANDERSON,SE | 25/09/2020 | | |
| CHECKED IDERALDO.CO | 08/05/2020 | PROJ. CODE.: 814.0384-0 | |
| APPROVED CARLOS.BR | 12/05/2020 | | |
| | | | PAGE 10 / 5 |