



SRP3008 230V PD 50/60Hz - CONTROL III 814.0385-0

ATTENTION: This drawing is a SCHULZ COMPRESSORES Ltda property. All rights reserved. Is not allowed to copy its content without authorization. If you have any doubt, please contact Products Department of Schulz Compressors.

---	---	---	---	---	---	---	---
---	---	---	---	---	---	---	---
---	---	---	---	---	---	---	---
ANDERSON.SE	000897	01	IDERALDO.CO	06	---	10/02/2021	SENSOR 012.2135-0 TO CABLE 012.1532-0
CARLOS.BR	---	00	ANDERSON.SE	---	---	08/05/2020	DRAWING RELEASE
APPROVED	S.A.P.	Nº	DRAWN	PG	CO	DATE	CHANGEMENT
REVIEW							

SRP3008 230V PD 50/60Hz - CONTROL III



	NAME	DATE	Title Page	Scale: 1: 1
DRAWN	ANDERSON.SE	25/09/2018		
CHECKED	IDERALDO.CO	08/05/2020	CODE: 814.0385-0	PAGE
APPROVED	CARLOS.BR	08/05/2020		1 / 6

ATTENTION: This drawing is a SCHULZ COMPRESSORES Ltda property. All rights reserved. Is not allowed to copy its content without authorization. If you have any doubt, please contact Products Department of Schulz Compressors.

Component	Description
K1	Contactora Line
K2	Contactora Delta
K3	Contactora Star
K4	Contactora Fan
K5	Contactora Dryer
K6	Contactora Fan Enclosure Electric
KA1	Contactora Auxiliary 1
KA2	Contactora Auxiliary 2
KA3	Contactora Auxiliary 3
KA4	Contactora Auxiliary 4
M1	Main motor
M2	Dryer fan (cooler)
M3	Hermetic compressor motor
M4	Fan dryer
M5	Electric panel fan
M6	Electric panel fan
FT1	Overload relay / main motor
FT2	Overload relay / fan cooler
QN	1-pole circuit breaker
QN	2 poles circuit breaker
FN	Command fuse

Component	Description
1X0	Power terminal
1X1	Control terminal / 24 VCA
1X2	Control terminal / 220 VCA
XSN	Bar terminal
TN	Transformer Control
B1	Emergency stop
Y1	Intake solenoid valve
Y2	Solenoid valve for modulating control
Y3	Solenoid valve, slow relief / pneumatic retention
PURG	Electronic condensate drain
KSFF	Phase fault and sequence relay
KTN	Timer relay
H	Hour meter
HN	Signal lamp
TR1	Thermometer / thermostat
P1	Load / Unload pressures switch
P2	Unload pressure switch
P3	Safety pressure switch
P4	Low pressure switch
TP1	Delivery pressure transducer
TP2	Internal pressure transducer

Component	Description
TMP1	Discharge temperature sensor
TMP2	Dryer temperature sensor
KP1	PTC relay
S1	Start button compressor / dryer
S2	Stop button compressor / dryer
QN	Switch disconnecter / 3 poles
FTN	Overload relay
CE1	Compressor electronic controller
CE2	Dryer electronic controller
G1	Softstarter
A1	Frequency converter
PWM	PWM 4 ... 20ma converter
PV	Fan pressure switch (dryer)
PA	High pressure switch (dryer)
PB	Low pressure switch (dryer)
TK	Fan overload switch
IM	Indicator DE Maintenance
R1	Heating resistance / main motor
E1	Heating resistance / hermetic compressor
RFO	Oil filter restriction
RFA	Air filter restriction

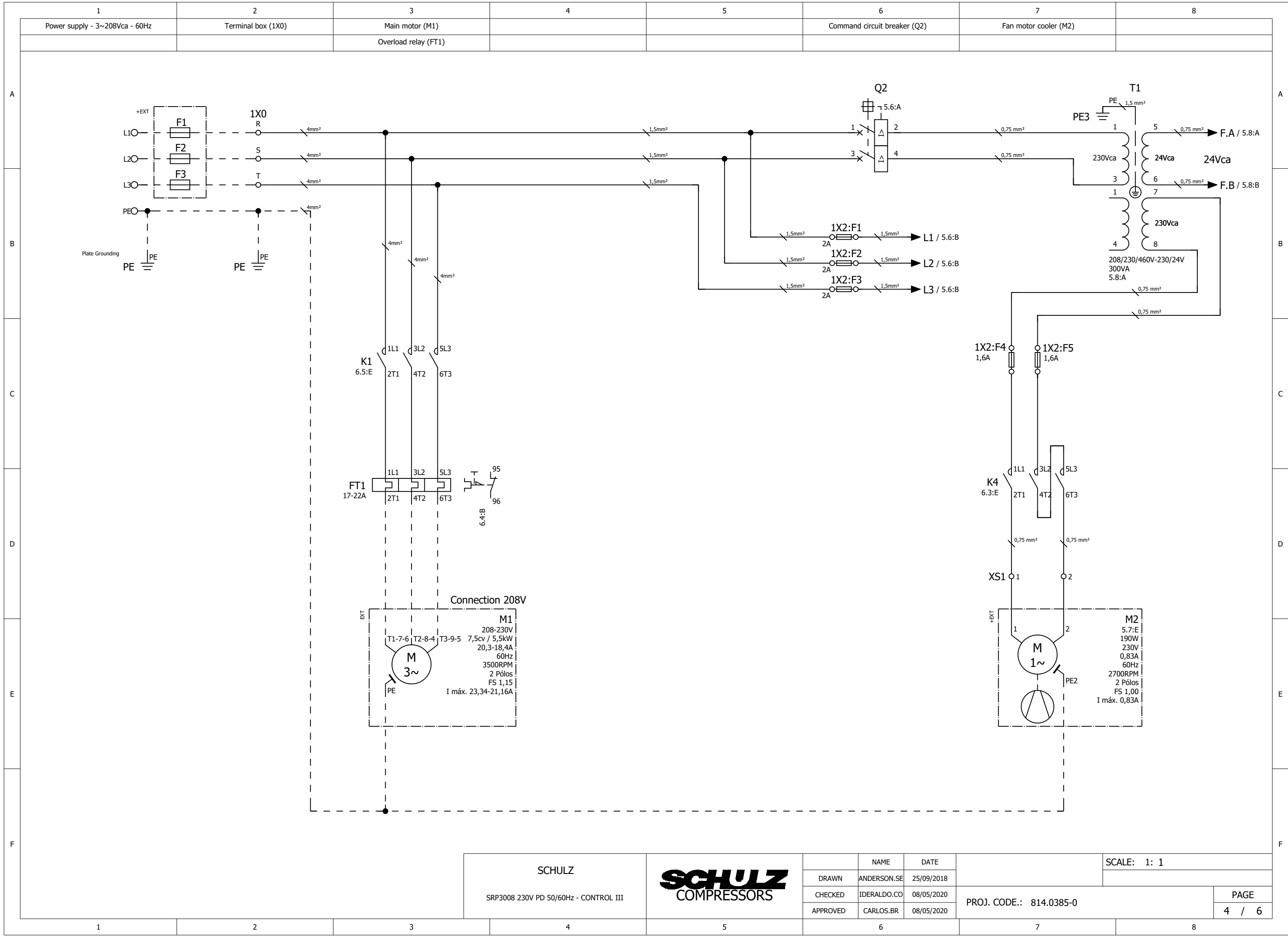
SCHULZ
 SRP3008 230V PD 50/60Hz - CONTROL III



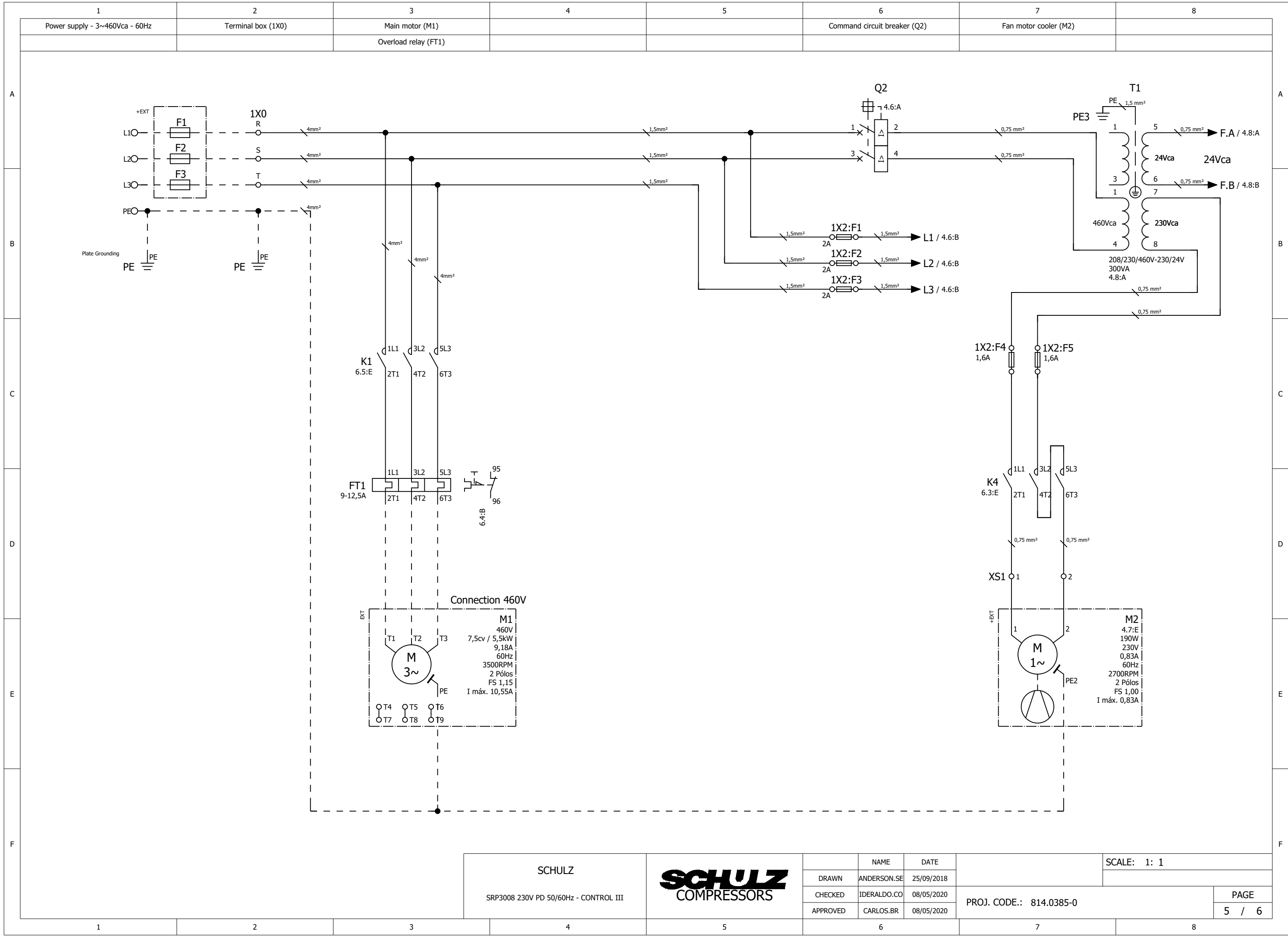
	NAME	DATE
DRAWN	ANDERSON.SE	25/09/2018
CHECKED	IDERALDO.CO	08/05/2020
APPROVED	CARLOS.BR	08/05/2020

Legend	SCALE: 1: 1
PROJ. CODE.: 814.0385-0	PAGE 3 / 6

ATTENTION: This drawing is a SCHULZ COMPRESSORES Ltda property. All rights reserved. Is not allowed to copy its content without authorization. If you have any doubt, please contact Products Department of Schulz Compressors.

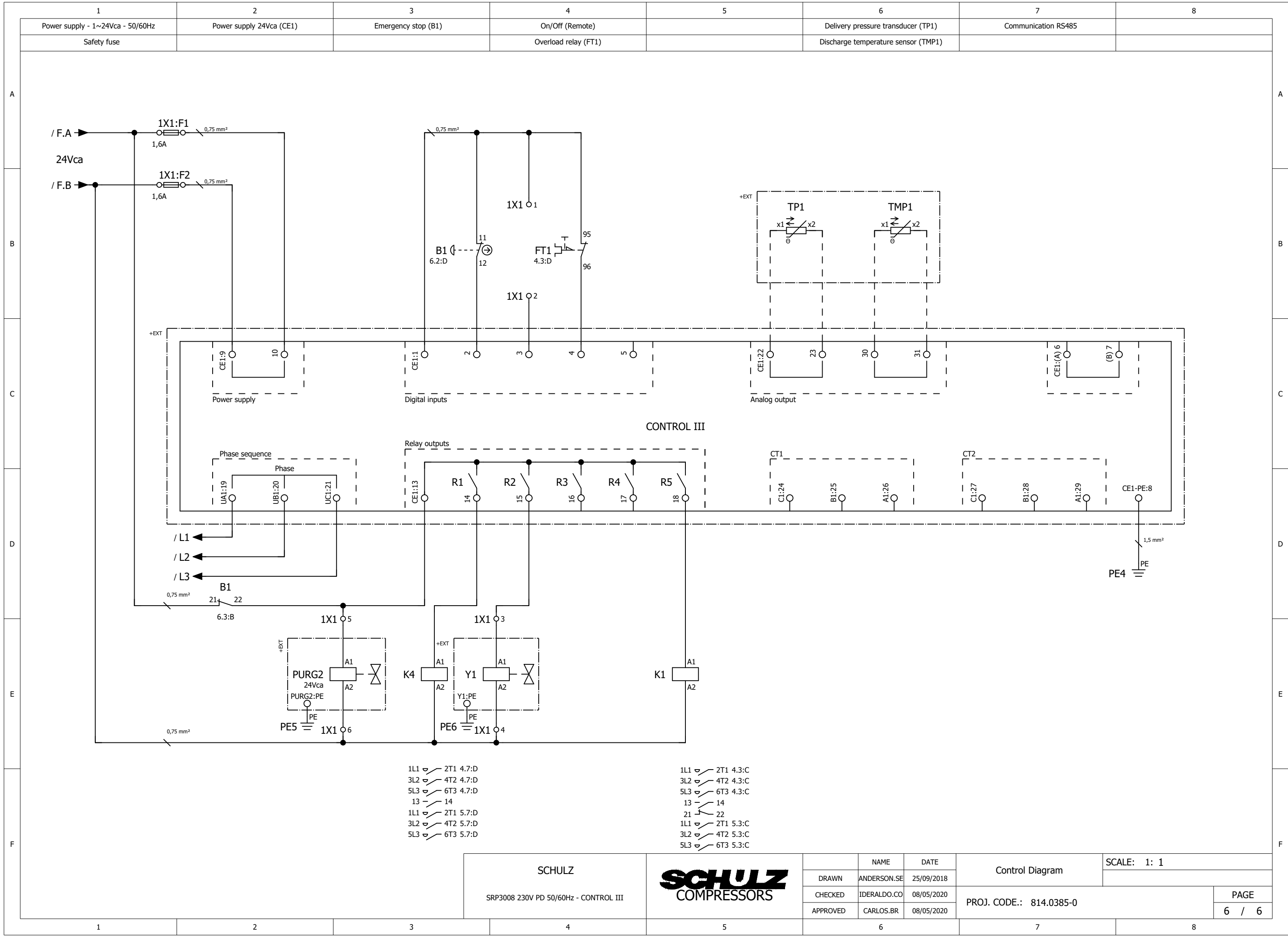


ATTENTION: This drawing is a SCHULZ COMPRESSORES Ltda property. All rights reserved. Is not allowed to copy its content without authorization. If you have any doubt, please contact Products Department of Schulz Compressors.



SCHULZ		NAME		DATE		SCALE: 1: 1	
SRP3008 230V PD 50/60Hz - CONTROL III		DRAWN	ANDERSON.SE	25/09/2018			
		CHECKED	IDERALDO.CO	08/05/2020		PAGE	
		APPROVED	CARLOS.BR	08/05/2020		5 / 6	
PROJ. CODE.: 814.0385-0							

ATTENTION: This drawing is a SCHULZ COMPRESSORES Ltda property. All rights reserved. Is not allowed to copy its content without authorization. If you have any doubt, please contact Products Department of Schulz Compressors.

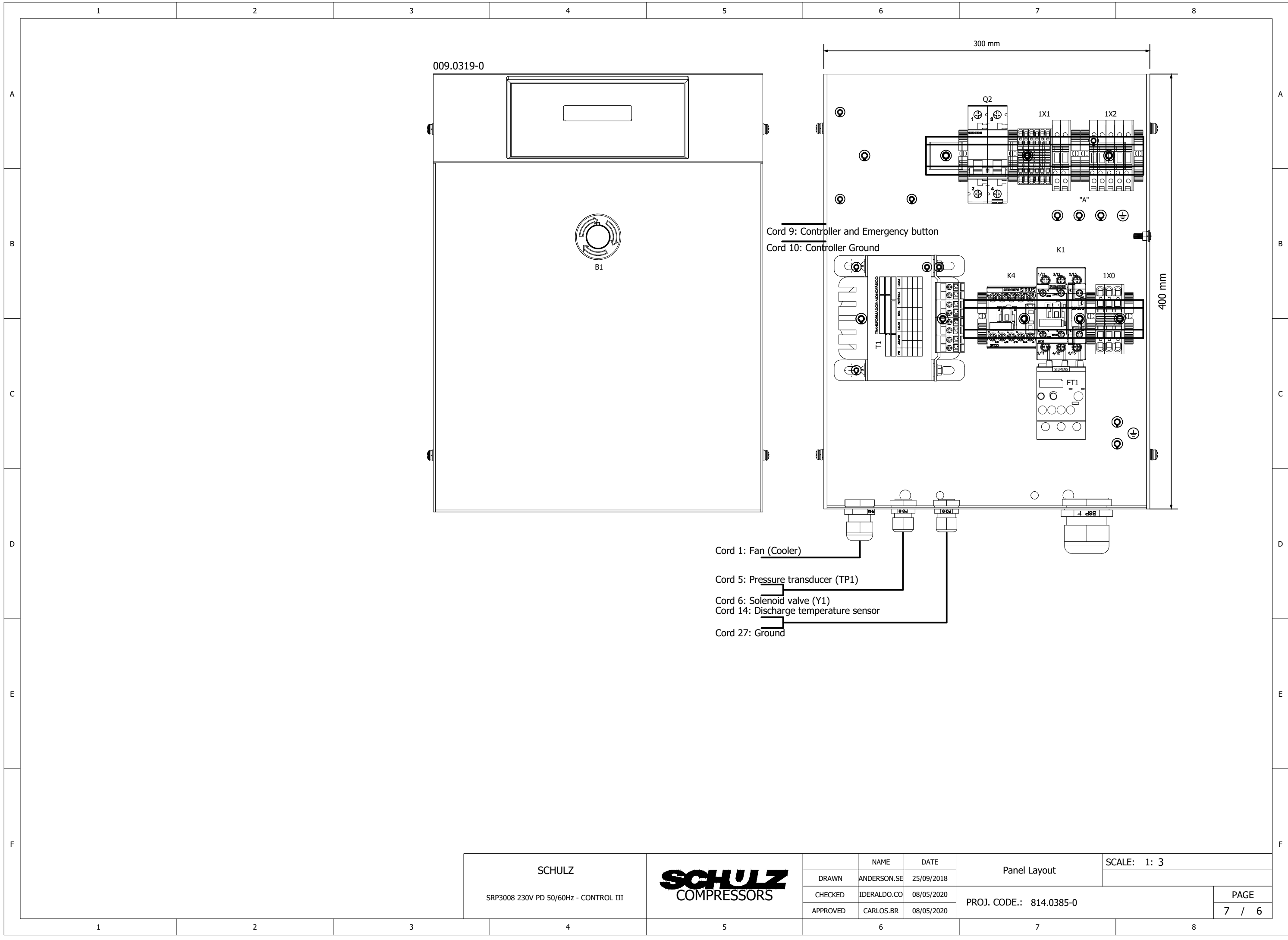


- 1L1 ↔ 2T1 4.7:D
- 3L2 ↔ 4T2 4.7:D
- 5L3 ↔ 6T3 4.7:D
- 13 ↔ 14
- 1L1 ↔ 2T1 5.7:D
- 3L2 ↔ 4T2 5.7:D
- 5L3 ↔ 6T3 5.7:D

- 1L1 ↔ 2T1 4.3:C
- 3L2 ↔ 4T2 4.3:C
- 5L3 ↔ 6T3 4.3:C
- 13 ↔ 14
- 21 ↔ 22
- 1L1 ↔ 2T1 5.3:C
- 3L2 ↔ 4T2 5.3:C
- 5L3 ↔ 6T3 5.3:C

SCHULZ		SCHULZ COMPRESSORS		NAME: ANDERSON.SE DATE: 25/09/2018		Control Diagram		SCALE: 1: 1	
SRP3008 230V PD 50/60Hz - CONTROL III				DRAWN: ANDERSON.SE CHECKED: IDERALDO.CO APPROVED: CARLOS.BR		DATE: 08/05/2020 08/05/2020		PROJ. CODE.: 814.0385-0	
								PAGE 6 / 6	

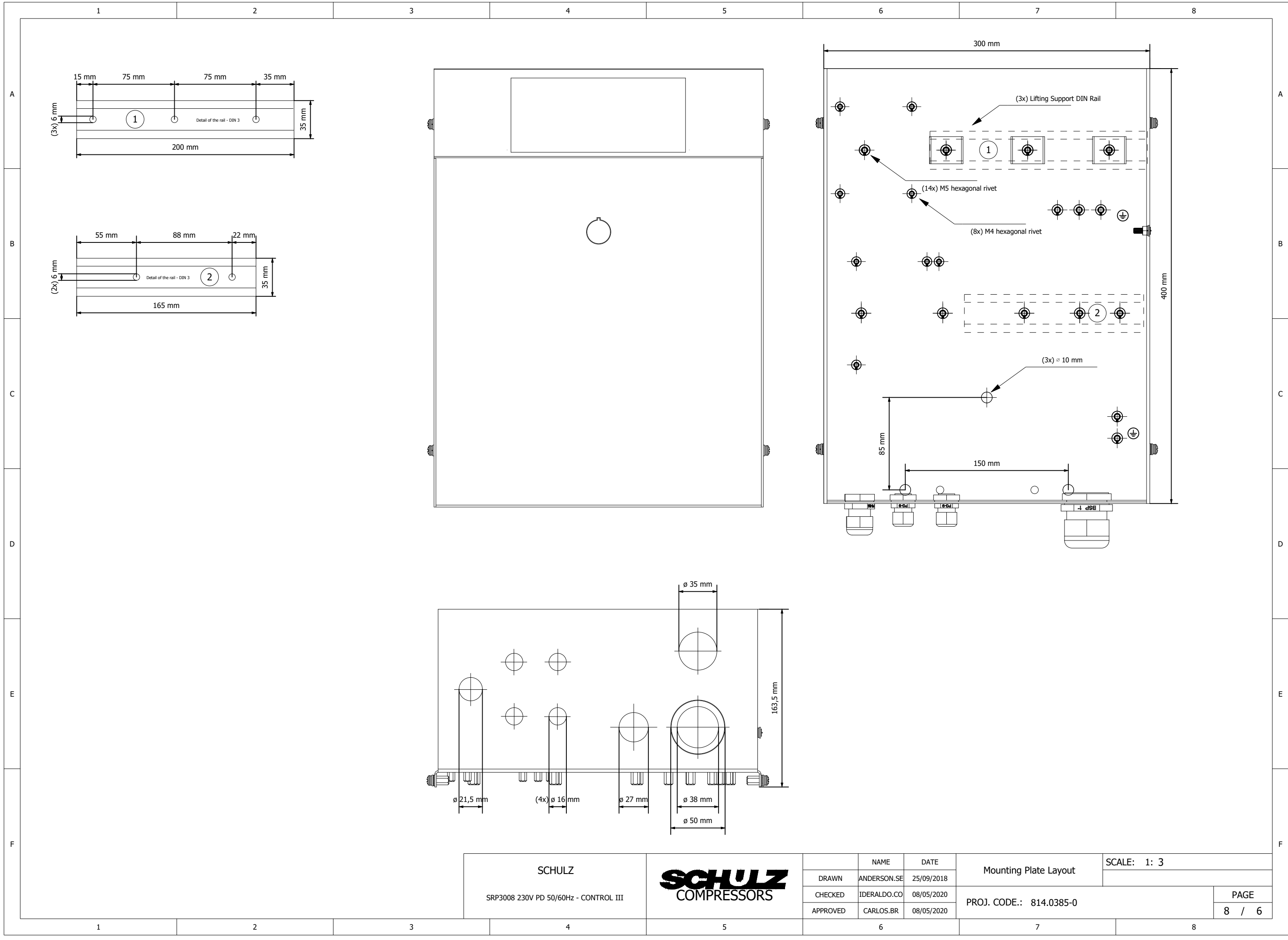
ATTENTION: This drawing is a SCHULZ COMPRESSORES Ltda property. All rights reserved. Is not allowed to copy its content without authorization. If you have any doubt, please contact Products Department of Schulz Compressors.



SCHULZ		NAME		DATE	Panel Layout	SCALE: 1: 3	
SRP3008 230V PD 50/60Hz - CONTROL III		DRAWN		ANDERSON.SE		25/09/2018	
		CHECKED		IDERALDO.CO	08/05/2020	PAGE	
		APPROVED		CARLOS.BR	08/05/2020	7 / 6	
PROJ. CODE.: 814.0385-0							



ATTENTION: This drawing is a SCHULZ COMPRESSORES Ltda property. All rights reserved. Is not allowed to copy its content without authorization. If you have any doubt, please contact Products Department of Schulz Compressors.



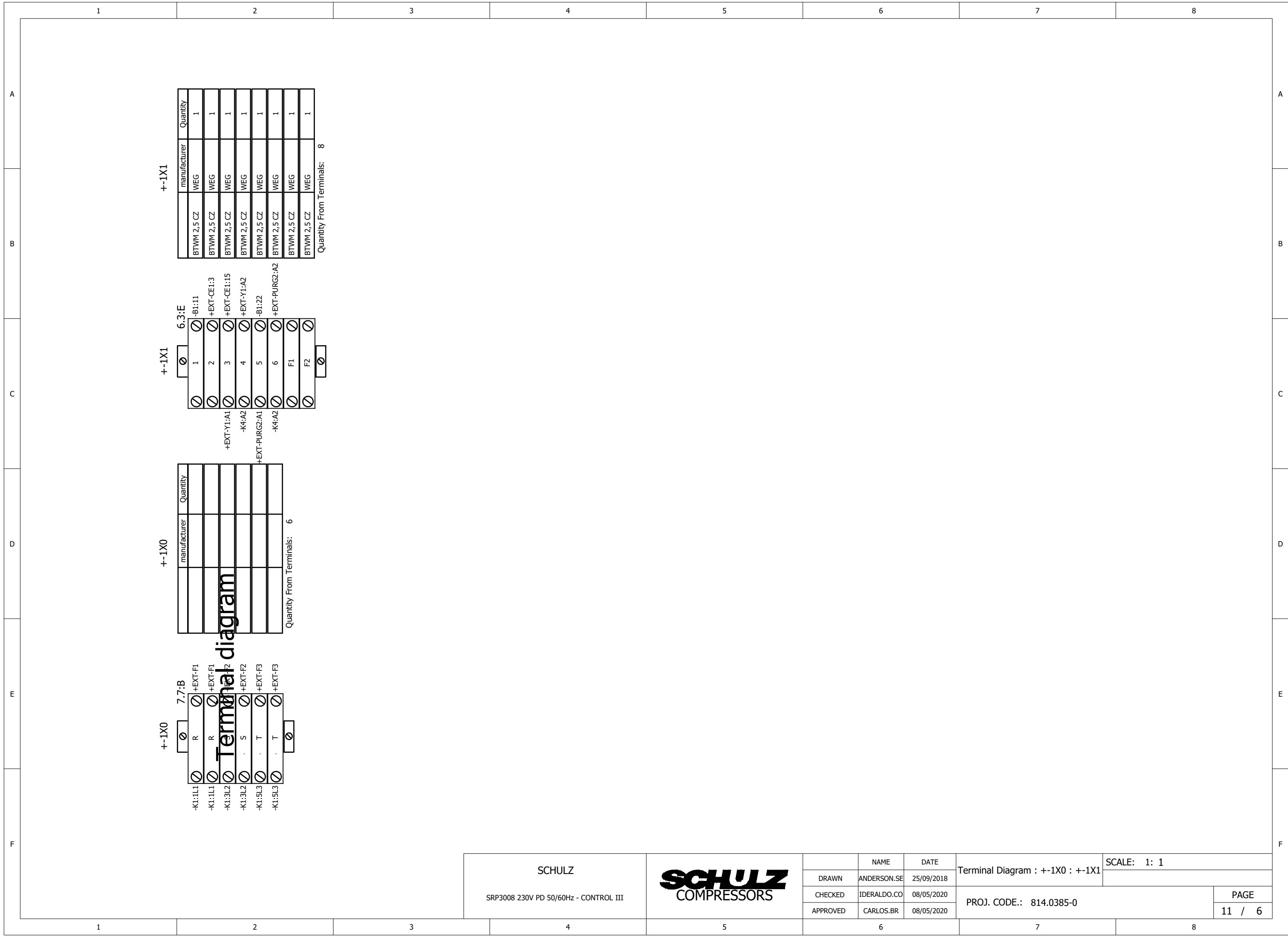
SCHULZ		NAME		DATE		SCALE: 1: 3	
SRP3008 230V PD 50/60Hz - CONTROL III		DRAWN ANDERSON.SE		25/09/2018		Mounting Plate Layout	
SCHULZ COMPRESSORS		CHECKED IDERALDO.CO		08/05/2020		PROJ. CODE.: 814.0385-0	
		APPROVED CARLOS.BR		08/05/2020		PAGE	
						8 / 6	

ATTENTION: This drawing is a SCHULZ COMPRESSORES Ltda property. All rights reserved. Is not allowed to copy its content without authorization. If you have any doubt, please contact Products Department of Schulz Compressors.

1	2		3		4		5		6		7		8	
Item	Project tags	Description			Manufacturer's code		Schulz code		Manufacturer		Quantity			
A	01	009.0319-0	Base panel, Assembly, SRP 3005/3040 Compact			Base panel, Assembly, SRP		009.0319-0		USIMETAL		1		Pc
	02	B1	Emergency stop, Line BESG			Emergency stop, Line BESG		012.1892-0		WEG		1		Pc
	03	B1	NC contact, Emergency stop, Line BESG			NC contact, Emergency stop,		012.1899-0		WEG		2		Pc
	04	FT1	Overload relay, 17 - 22A, Size S0			Overload relay, 17 - 22A, Size		012.1955-0		SIEMEN		1		Pc
	05	FT1	Overload relay, 9 - 12,5A, Size S0			Overload relay, 9 - 12,5A, Size		012.2354-0		SIEMEN		1		Pc
B	06	K1	Contactor, 25A, 24V AC			Contactor, 25A, 24V AC		012.1927-0		SIEMEN		1		Pc
	07	K1	Surge suppressor, RC network, Size S0, 24/48V AC			Surge suppressor, RC network,		012.1946-0		SIEMEN		1		Pc
	08	1X0...1X2;K1;Q2	End bracket, gray color			End bracket, gray color		012.1341-0		WEG		8		Pc
	09	K4	Contactor, 7A, 24 V AC			Contactor, 7A, 24 V AC		012.1923-0		SIEMEN		1		Pc
	10	K4	Surge suppressor, RC network, Size S00, 24/48V AC			Surge suppressor, RC network,		012.1947-0		SIEMEN		1		Pc
	11	Q2	Miniature circuit-breaker, two-pole, 6A, C			Miniature circuit-breaker,		012.1962-0		SIEMEN		1		Pc
C	12	T1	Transformer Control, 300VA, 208/230/460V - 230/24V, 50/60Hz			Transformer Control, 300VA,		012.1882-0		PÓLUX		1		Pc
	13	1X0	Terminal, Gray color, 6mm ²			Terminal, Gray color, 6mm ²		012.1337-0		WEG		3		Pc
	14	1X0	End cover, Terminal, Gray color, 6mm ²			End cover, Terminal, Gray color,		012.1366-0		WEG		1		Pc
	15	1X1	Terminal, Gray color, 2,5mm ²			Terminal, Gray color, 2,5mm ²		012.1336-0		WEG		6		Pc
	16	1X1	End cover, Terminal, Gray color, 2,5mm ²			End cover, Terminal, Gray color,		012.1342-0		WEG		1		Pc
	17	1X1;1X2	Fused terminal, gray color, 2,5mm ²			Fused terminal, gray color,		012.1339-0		WEG		7		Pc
	18	1X1;1X2	Single safety fuse, 1,6A, delayed, 5 X 20mm			Single safety fuse, 1,6A,		012.1622-0		STP		4		Pc
	19	1X1;1X2	End cover, Fused terminal, gray color, 2,5mm ²			End cover, Fused terminal, gray		012.1386-0		WEG		2		Pc
D	20	1X2	Single safety fuse, 2A, fast, 5 X 20mm			Single safety fuse, 2A, fast, 5 X		012.0564-0		STP		3		Pc
E														
F														

SCHULZ SRP3008 230V PD 50/60Hz - CONTROL III				Part List			SCALE: 1: 1
DRAWN	ANDERSON.SE	25/09/2018		PROJ. CODE.: 814.0385-0		PAGE	
CHECKED	IDERALDO.CO	08/05/2020				9 / 6	
APPROVED	CARLOS.BR	08/05/2020					

ATTENTION: This drawing is a SCHULZ COMPRESSORES Ltda property. All rights reserved. Is not allowed to copy its content without authorization. If you have any doubt, please contact Products Department of Schulz Compressors.



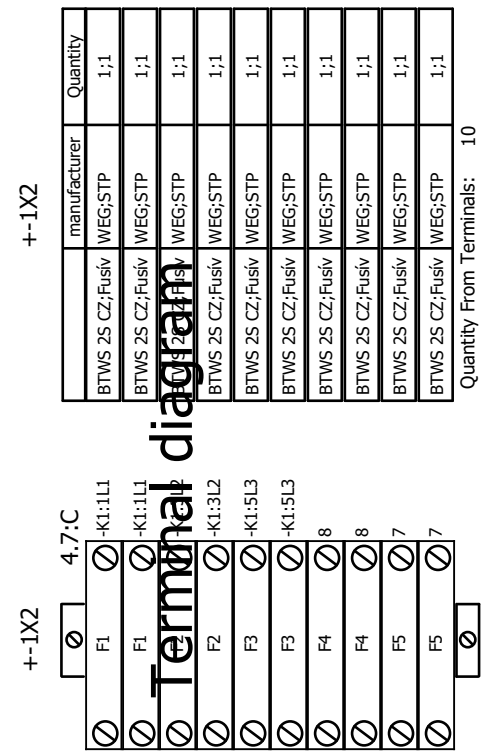
SCHULZ
SRP3008 230V PD 50/60Hz - CONTROL III



	NAME	DATE
DRAWN	ANDERSON.SE	25/09/2018
CHECKED	IDERALDO.CO	08/05/2020
APPROVED	CARLOS.BR	08/05/2020

Terminal Diagram : +-1X0 : +-1X1	SCALE: 1: 1
PROJ. CODE.: 814.0385-0	PAGE
	11 / 6

ATTENTION: This drawing is a SCHULZ COMPRESSORES Ltda property. All rights reserved. Is not allowed to copy its content without authorization. If you have any doubt, please contact Products Department of Schulz Compressors.



SCHULZ		SCHULZ COMPRESSORS		NAME		DATE	Terminal Diagram : +-1X2		SCALE: 1: 1		
SRP3008 230V PD 50/60Hz - CONTROL III				DRAWN	ANDERSON.SE	25/09/2018		PROJ. CODE.: 814.0385-0		PAGE	
				CHECKED	IDERALDO.CO	08/05/2020					
		APPROVED	CARLOS.BR	08/05/2020				12 / 6			