



SRP3025 230V PD 50/60Hz - CONTROL III 814.0387-0

ATTENTION: This drawing is a SCHULZ COMPRESSORES Ltda property. All rights reserved. Is not allowed to copy its content without authorization. If you have any doubt, please contact Products Department of Schulz Compressors.

| | | | | | | | |
|-----------|--------|-----|-------------|-----|-----|------------|-----------------|
| --- | --- | --- | --- | --- | --- | --- | --- |
| --- | --- | --- | --- | --- | --- | --- | --- |
| --- | --- | --- | --- | --- | --- | --- | --- |
| --- | --- | --- | --- | --- | --- | --- | --- |
| CARLOS.BR | --- | 00 | ANDERSON.SE | --- | --- | 08/11/2019 | DRAWING RELEASE |
| APPROVED | S.A.P. | Nº | DRAWN | PG | CO | DATE | CHANGEMENT |
| REVIEW | | | | | | | |

SRP3025 230V PD 50/60Hz - CONTROL III



| | | | | |
|----------|-------------|------------|------------------|---------------|
| | NAME | DATE | Title Page | Scale: 1: 1 |
| DRAWN | ANDERSON.SE | 25/09/2018 | | |
| CHECKED | IDERALDO.CO | 07/11/2019 | | |
| APPROVED | CARLOS.BR | 08/11/2019 | CODE: 814.0387-0 | PAGE 1 / 5 |

ATTENTION: This drawing is a SCHULZ COMPRESSORES Ltda property. All rights reserved. Is not allowed to copy its content without authorization. If you have any doubt, please contact Products Department of Schulz Compressors.

| Component | Description |
|-----------|----------------------------------|
| K1 | Contator Linha |
| K2 | Contactor Delta |
| K3 | Contactor Star |
| K4 | Contactor Fan |
| K5 | Contactor Dryer |
| K6 | Contactor Fan Enclosure Electric |
| KA1 | Contactor Auxiliary 1 |
| KA2 | Contactor Auxiliary 2 |
| KA3 | Contactor Auxiliary 3 |
| KA4 | Contactor Auxiliary 4 |
| M1 | Main motor |
| M2 | Dryer fan (cooler) |
| M3 | Hermetic compressor motor |
| M4 | Fan dryer |
| M5 | Electric panel fan |
| M6 | Electric panel fan |
| FT1 | Overload relay / main motor |
| FT2 | Overload relay / fan cooler |
| QN | 1-pole circuit breaker |
| QN | 2 poles circuit breaker |
| FN | Command fuse |

| Component | Description |
|-----------|---|
| 1X0 | Power terminal |
| 1X1 | Control terminal / 24 VCA |
| 1X2 | Control terminal / 220 VCA |
| XSN | Bar terminal |
| TN | Transformer Control |
| B1 | Emergency stop |
| Y1 | Intake solenoid valve |
| Y2 | Solenoid valve for modulating control |
| Y3 | Solenoid valve, slow relief / pneumatic retention |
| PURG | Electronic condensate drain |
| KSFF | Phase fault and sequence relay |
| KTN | Timer relay |
| H | Hour meter |
| HN | Signal lamp |
| TR1 | Thermometer / thermostat |
| P1 | Load / Unload pressures switch |
| P2 | Unload pressure switch |
| P3 | Safety pressure switch |
| P4 | Low pressure switch |
| TP1 | Delivery pressure transducer |
| TP2 | Internal pressure transducer |

| Component | Description |
|-----------|--|
| TMP1 | Discharge temperature sensor |
| TMP2 | Dryer temperature sensor |
| KP1 | PTC relay |
| S1 | Start button compressor / dryer |
| S2 | Stop button compressor / dryer |
| QN | Switch disconnecter / 3 poles |
| FTN | Overload relay |
| CE1 | Compressor electronic controller |
| CE2 | Dryer electronic controller |
| G1 | Softstarter |
| A1 | Frequency converter |
| PWM | PWM 4 ... 20ma converter |
| PV | Fan pressure switch (dryer) |
| PA | High pressure switch (dryer) |
| PB | Low pressure switch (dryer) |
| TK | Fan overload switch |
| IM | Indicator DE Maintenance |
| R1 | Heating resistance / main motor |
| E1 | Heating resistance / hermetic compressor |
| RFO | Oil filter restriction |
| RFA | Air filter restriction |

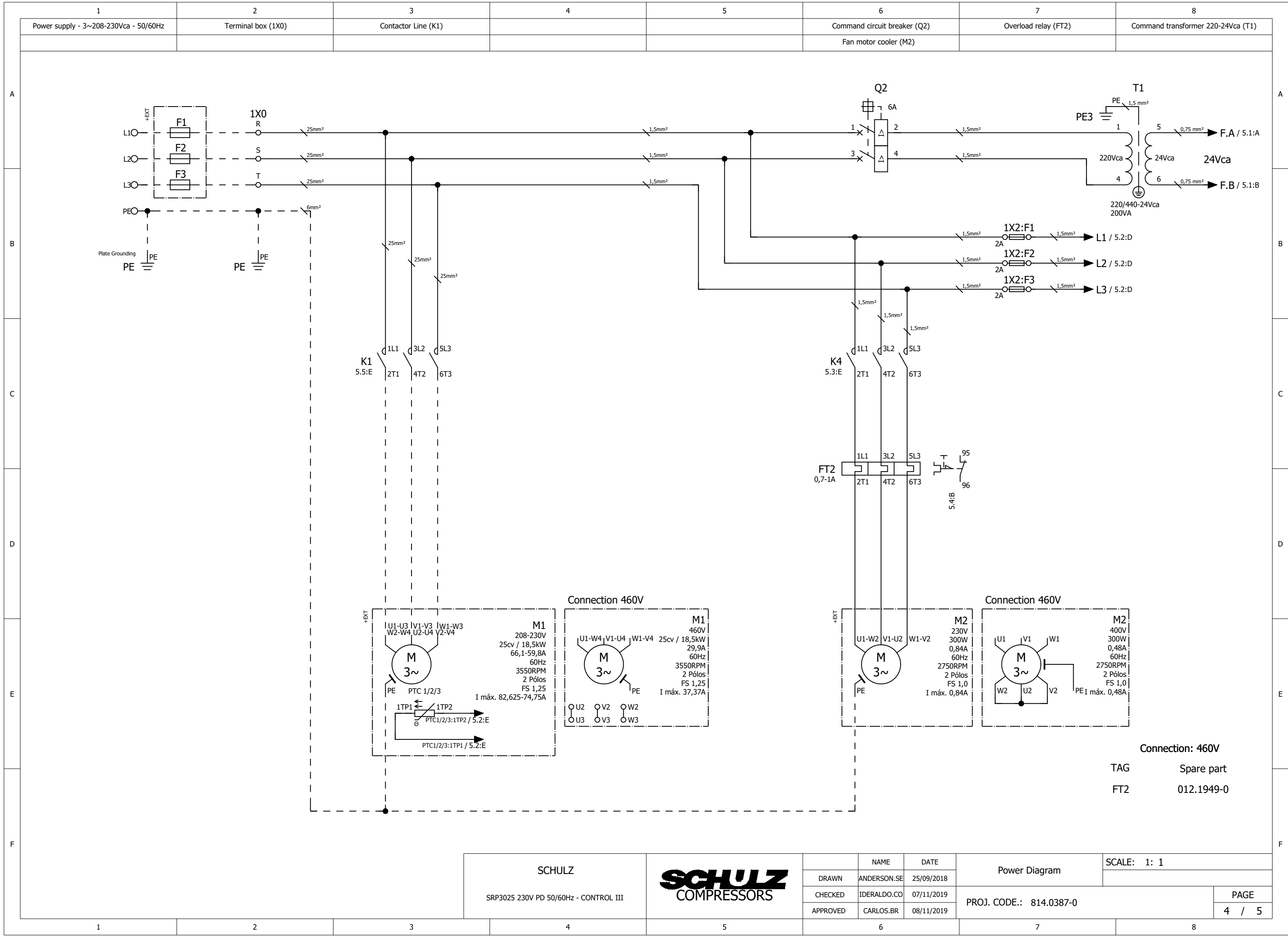
SCHULZ
 SRP3025 230V PD 50/60Hz - CONTROL III



| | NAME | DATE |
|----------|-------------|------------|
| DRAWN | ANDERSON.SE | 25/09/2018 |
| CHECKED | IDERALDO.CO | 07/11/2019 |
| APPROVED | CARLOS.BR | 08/11/2019 |

| | |
|-------------------------|---------------|
| Legend | SCALE: 1: 1 |
| PROJ. CODE.: 814.0387-0 | PAGE 3 / 5 |

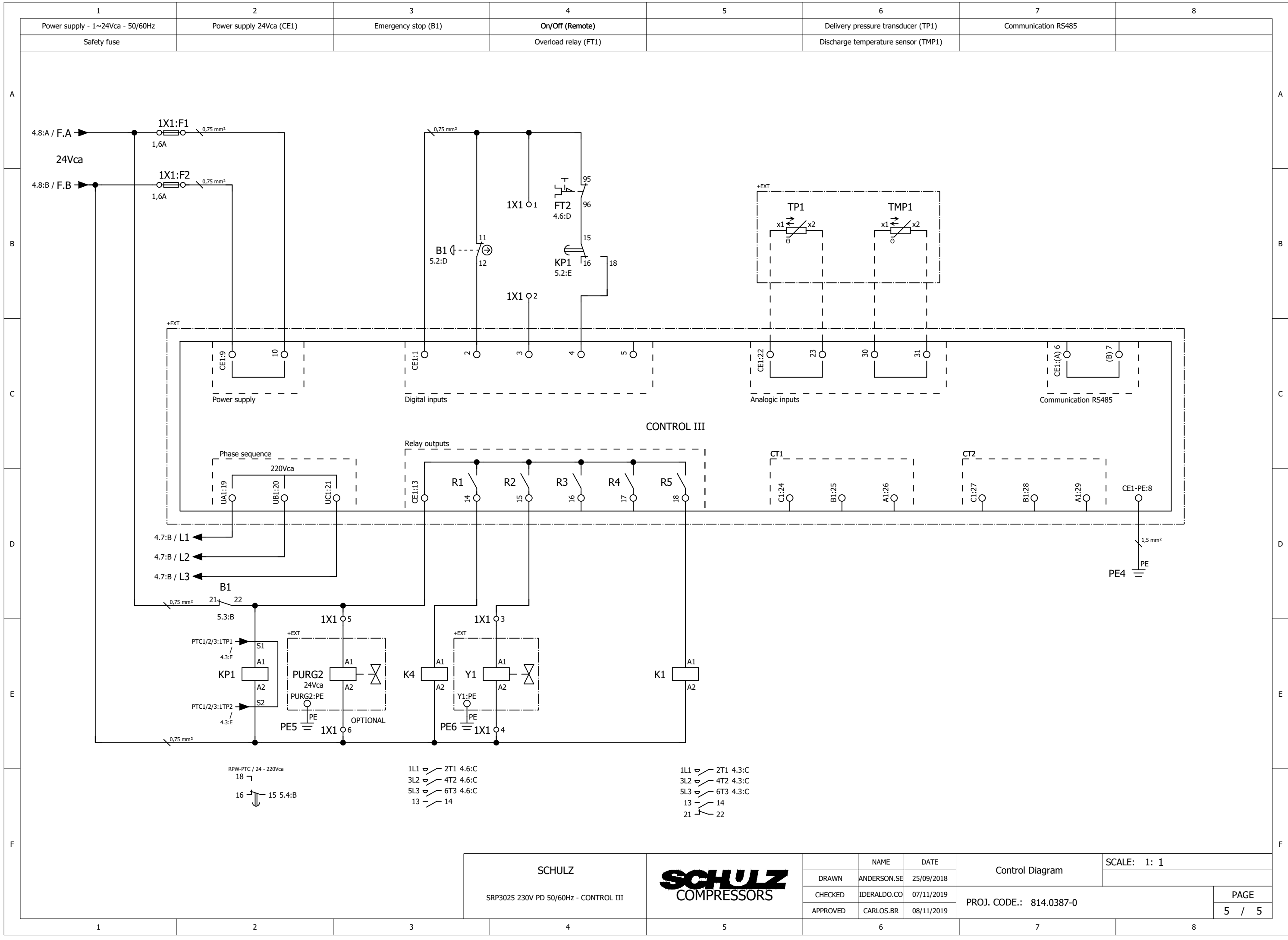
ATTENTION: This drawing is a SCHULZ COMPRESSORES Ltda property. All rights reserved. Is not allowed to copy its content without authorization. If you have any doubt, please contact Products Department of Schulz Compressors.



| | | | | | | | | | |
|---------------------------------------|--|----------|--|-------------|--|---------------|--|-------------------------|--|
| SCHULZ | | NAME | | DATE | | Power Diagram | | SCALE: 1: 1 | |
| SRP3025 230V PD 50/60Hz - CONTROL III | | DRAWN | | ANDERSON.SE | | 25/09/2018 | | | |
| | | CHECKED | | IDERALDO.CO | | 07/11/2019 | | PAGE | |
| | | APPROVED | | CARLOS.BR | | 08/11/2019 | | PROJ. CODE.: 814.0387-0 | |
| | | | | | | | | 4 / 5 | |

Connection: 460V
TAG Spare part
FT2 012.1949-0

ATTENTION: This drawing is a SCHULZ COMPRESSORES Ltda property. All rights reserved. Is not allowed to copy its content without authorization. If you have any doubt, please contact Products Department of Schulz Compressors.



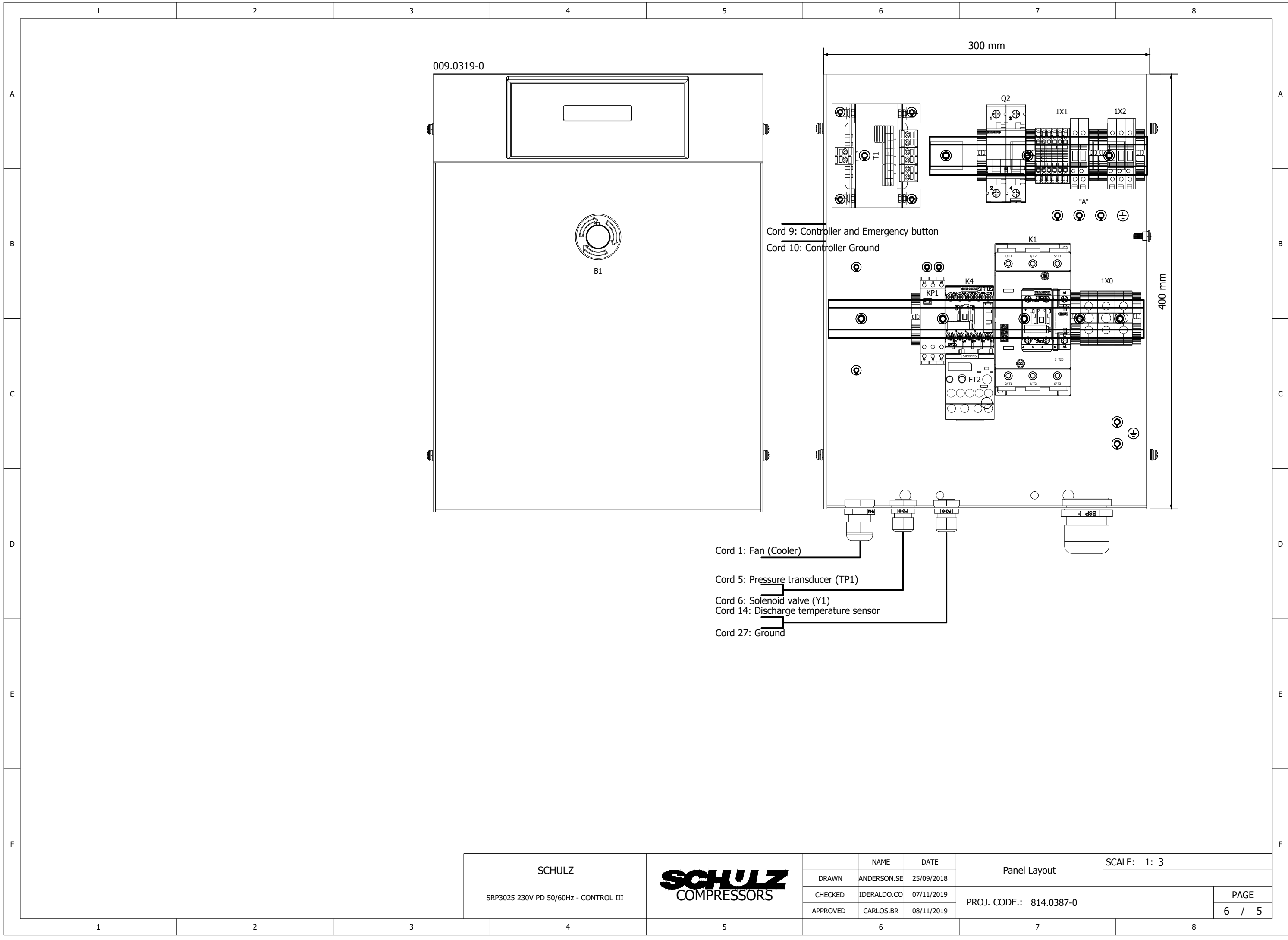
RPW-PTC / 24 - 220Vca
18

1L1 2T1 4.6:C
3L2 4T2 4.6:C
5L3 6T3 4.6:C
13 14

1L1 2T1 4.3:C
3L2 4T2 4.3:C
5L3 6T3 4.3:C
13 14
21 22

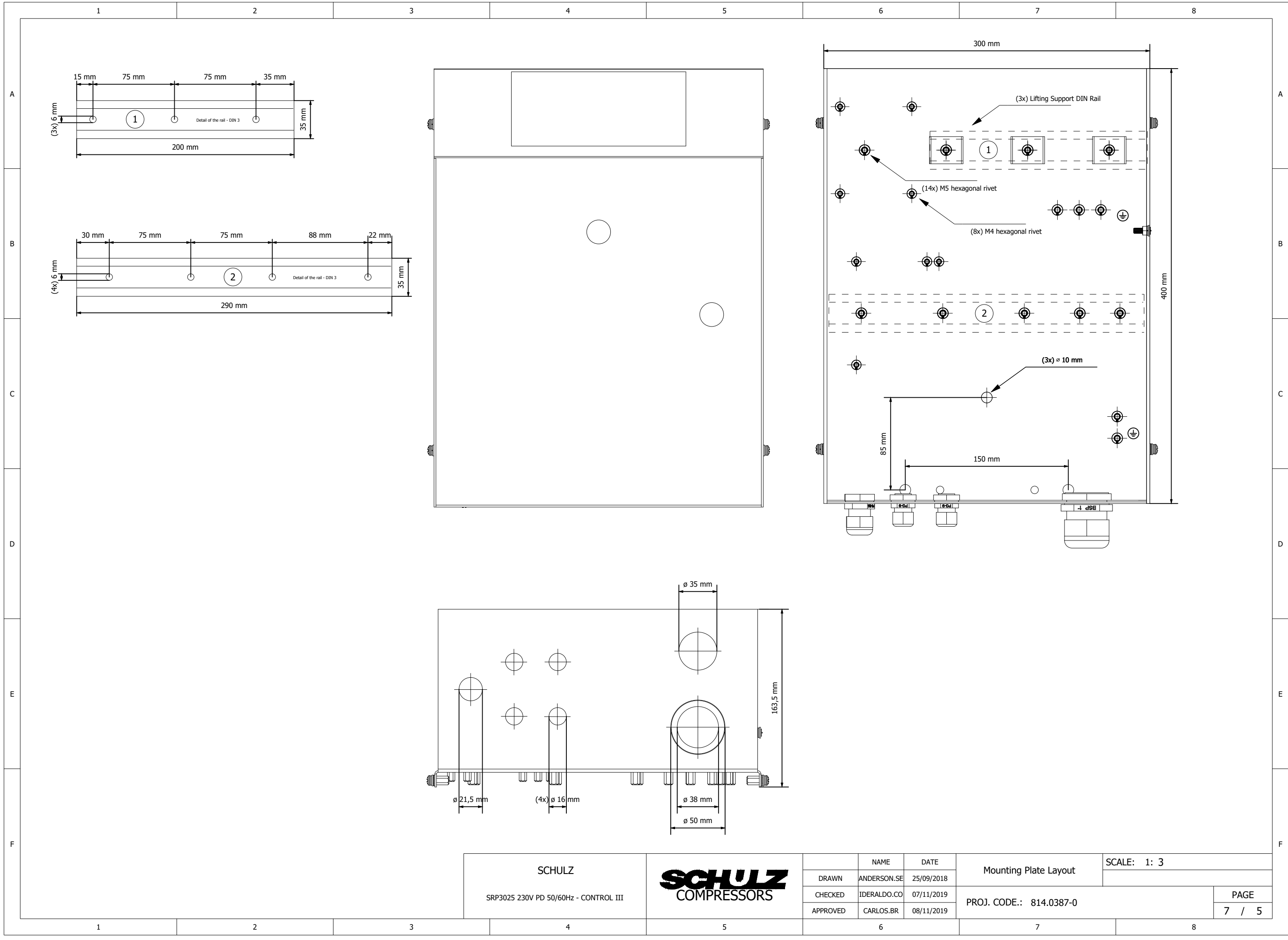
| | | | | | | | | | |
|---------------------------------------|--|----------|--|-------------|--|-----------------|--|-------------|--|
| SCHULZ | | NAME | | DATE | | Control Diagram | | SCALE: 1: 1 | |
| SRP3025 230V PD 50/60Hz - CONTROL III | | DRAWN | | ANDERSON.SE | | 25/09/2018 | | | |
| | | CHECKED | | IDERALDO.CO | | 07/11/2019 | | PAGE | |
| | | APPROVED | | CARLOS.BR | | 08/11/2019 | | 5 / 5 | |
| PROJ. CODE.: 814.0387-0 | | | | | | | | | |

ATTENTION: This drawing is a SCHULZ COMPRESSORES Ltda property. All rights reserved. Is not allowed to copy its content without authorization. If you have any doubt, please contact Products Department of Schulz Compressors.




| | | | | | |
|--|----------------------|---------|------------------------|-------------------------|-------------|
| SCHULZ SRP3025 230V PD 50/60Hz - CONTROL III | | NAME | DATE | Panel Layout | SCALE: 1: 3 |
| | | DRAWN | ANDERSON.SE 25/09/2018 | | |
| | | CHECKED | IDERALDO.CO 07/11/2019 | PROJ. CODE.: 814.0387-0 | |
| APPROVED | CARLOS.BR 08/11/2019 | 6 / 5 | | | |

ATTENTION: This drawing is a SCHULZ COMPRESSORES Ltda property. All rights reserved. Is not allowed to copy its content without authorization. If you have any doubt, please contact Products Department of Schulz Compressors.




| | | | | | | | | | | |
|---------------------------------------|--|------------------------------|--|----------|-------------|------------|-------------------------|--|-------------|--|
| SCHULZ | | SCHULZ COMPRESSORS | | NAME | | DATE | Mounting Plate Layout | | SCALE: 1: 3 | |
| SRP3025 230V PD 50/60Hz - CONTROL III | | | | DRAWN | ANDERSON.SE | 25/09/2018 | PROJ. CODE.: 814.0387-0 | | PAGE | |
| | | | | CHECKED | IDERALDO.CO | 07/11/2019 | | | 7 / 5 | |
| | | | | APPROVED | CARLOS.BR | 08/11/2019 | | | | |

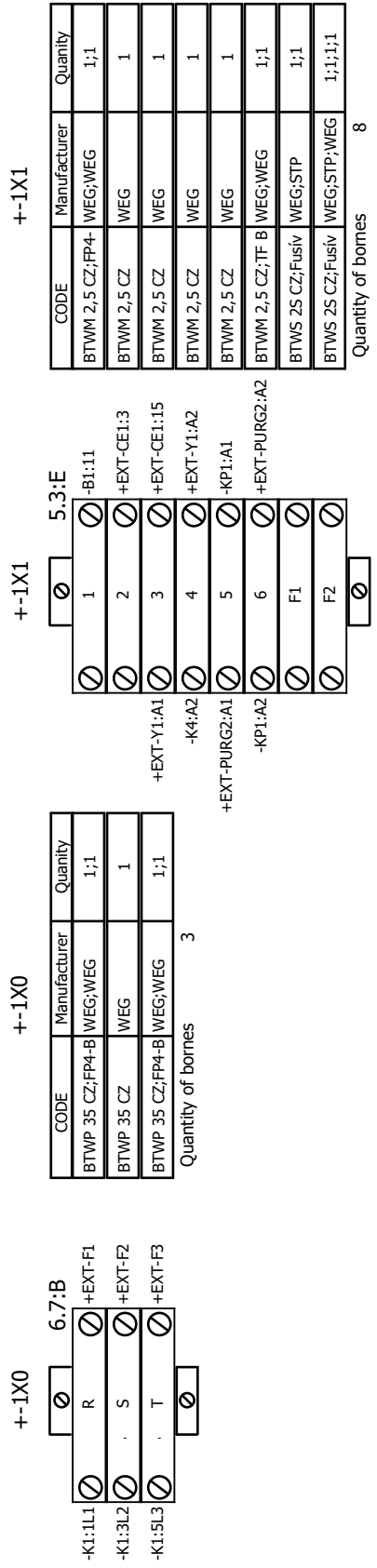
ATTENTION: This drawing is a SCHULZ COMPRESSORES Ltda property. All rights reserved. Is not allowed to copy its content without authorization. If you have any doubt, please contact Products Department of Schulz Compressors.

| 1 | 2 | | 3 | 4 | 5 | 6 | 7 | 8 |
|------------|------------------|---|--|---|-------------------------|-------------|------------|-------------|
| Item | Project tags | Description | Manufacturer's code | Schulz code | Manufacturer | Quantity | | |
| 1 | 009.0319-0 | Base panel, Assembly, SRP 3005/3040 Compact | Base panel, Assembly, SRP | 009.0319-0 | USIMETAL | 1 | Pc | |
| 2 | B1 | Emergency stop, Line BESG | Emergency stop, Line BESG | 012.1892-0 | WEG | 1 | Pc | |
| 3;4 | B1 | NC contact, Emergency stop, Line BESG | NC contact, Emergency stop, | 012.1899-0 | WEG | 2 | Pc | |
| 5 | FT2 | Overload relay, 0,7 - 1A, Size S00 | Overload relay, 0,7 - 1A, Size | 012.1950-0 | SIEMEN | 1 | Pc | |
| 6 | K1 | Contacto, 95A, 24V AC | Contacto, 95A, 24V AC | 012.1933-0 | SIEMEN | 1 | Pc | |
| 7 | K1 | Surge suppressor, RC network, Size S0, 24/48V AC | Surge suppressor, RC network, | 012.1946-0 | SIEMEN | 1 | Pc | |
| 8 | K4 | Contacto, 7A, 24 V AC | Contacto, 7A, 24 V AC | 012.1923-0 | SIEMEN | 1 | Pc | |
| 9 | K4 | Surge suppressor, RC network, Size S00, 24/48V AC | Surge suppressor, RC network, | 012.1947-0 | SIEMEN | 1 | Pc | |
| 10 | KP1 | Relay monitoring, model RPW-PTC, 24 - 220Vca | Relay monitoring, model | 012.1135-0 | WEG | 1 | Pc | |
| 11;13;16 | 1X0...1X2;KP1;Q2 | End bracket, gray color | End bracket, gray color | 012.1341-0 | WEG | 8 | Pc | |
| 12 | Q2 | Miniature circuit-breaker, two-pole, 6A, C | Miniature circuit-breaker, | 012.1962-0 | SIEMEN | 1 | Pc | |
| 14 | T1 | Transformer Control, 200VA, 220/440 - 24V, 50/60Hz | Transformer Control, 200VA, | 012.2069-0 | PÓLUX | 1 | Pc | |
| 15;17;18 | 1X0 | Terminal, Gray color, 35mm ² | Terminal, Gray color, 35mm ² | 012.1455-0 | WEG | 3 | Pc | |
| 20;22...26 | 1X1 | Terminal, Gray color, 2,5mm ² | Terminal, Gray color, 2,5mm ² | 012.1336-0 | WEG | 6 | Pc | |
| 27 | 1X1 | End cover, Terminal, Gray color, 2,5mm ² | End cover, Terminal, Gray color, | 012.1342-0 | WEG | 1 | Pc | |
| 28;30;34 | 1X1;1X2 | Fused terminal, gray color, 2,5mm ² | Fused terminal, gray color, | 012.1339-0 | WEG | 5 | Pc | |
| 29;31 | 1X1 | Single safety fuse, 1,6A, delayed, 5 X 20mm | Single safety fuse, 1,6A, | 012.1622-0 | STP | 2 | Pc | |
| 32;40 | 1X1;1X2 | End cover, Fused terminal, gray color, 2,5mm ² | End cover, Fused terminal, gray | 012.1386-0 | WEG | 2 | Pc | |
| 35;38;41 | 1X2 | Single safety fuse, 2A, fast, 5 X 20mm | Single safety fuse, 2A, fast, 5 X | 012.0564-0 | | 3 | Pc | |
| | | | | | | | | |
| | | | | | | | | |
| | | | | | | | | |
| | | | | | | | | |
| | | | | | | | | |
| | | | | | | | | |
| | | | | | | | | |
| | | | | | | | | |
| | | | | | | | | |
| | | | | | | | | |
| | | | | | | | | |
| | | | | | | | | |
| | | | | | | | | |
| | | | | | | | | |
| | | | | | | | | |
| | | | | | | | | |
| | | | | | | | | |
| | | | | | | | | |
| | | | | | | | | |
| | | | | | | | | |
| | | | | | | | | |
| | | | | | | | | |
| | | | | | | | | |
| | | | | | | | | |
| | | | SCHULZ |  | | | | SCALE: 1: 1 |
| | | | SRP3025 230V PD 50/60Hz - CONTROL III | | | Part List | | |
| | | | | | DRAWN | ANDERSON.SE | 25/09/2018 | PAGE |
| | | | | | CHECKED | IDERALDO.CO | 07/11/2019 | 8 / 5 |
| | | | | | APPROVED | CARLOS.BR | 08/11/2019 | |
| | | | | | PROJ. CODE.: 814.0387-0 | | | |

ATTENTION: This drawing is a SCHULZ COMPRESSORES Ltda property. All rights reserved. Is not allowed to copy its content without authorization. If you have any doubt, please contact Products Department of Schulz Compressors.

| 1 | 2 | 3 | 4 | 5 | 6 | 7 | 8 | | | | | | | | | | | | | |
|----------|--------------|--|---------------------------------------|---|--|---|-------|------|------|-------|-------------|------------|---------|-------------|------------|----------|-----------|------------|--|-------------|
| A | Project tags | Description | | Project tags | Description | | | | | | | | | | | | | | | |
| | 009.0319-0 | Base panel, Assembly, SRP 3005/3040 Compact | | | | | | | | | | | | | | | | | | |
| | B1 | Emergency stop, Line BESG | | | | | | | | | | | | | | | | | | |
| | FT2 | Overload relay, 0,7 - 1A, Size S00 | | | | | | | | | | | | | | | | | | |
| | K1 | Contactor, 95A, 24V AC | | | | | | | | | | | | | | | | | | |
| B | K4 | Contactor, 7A, 24 V AC | | | | | | | | | | | | | | | | | | |
| | KP1 | Relay monitoring, model RPW-PTC, 24 - 220Vca | | | | | | | | | | | | | | | | | | |
| | Q2 | Miniature circuit-breaker, two-pole, 6A, C | | | | | | | | | | | | | | | | | | |
| | T1 | Transformer Control, 200VA, 220/440 - 24V, 50/60Hz | | | | | | | | | | | | | | | | | | |
| | 1X0 | Terminal, Gray color, 35mm ² | | | | | | | | | | | | | | | | | | |
| C | 1X0 | Terminal, Gray color, 35mm ² | | | | | | | | | | | | | | | | | | |
| | 1X0 | Terminal, Gray color, 35mm ² | | | | | | | | | | | | | | | | | | |
| | 1X1 | Terminal, Gray color, 2,5mm ² | | | | | | | | | | | | | | | | | | |
| | 1X1 | Terminal, Gray color, 2,5mm ² | | | | | | | | | | | | | | | | | | |
| | 1X1 | Terminal, Gray color, 2,5mm ² | | | | | | | | | | | | | | | | | | |
| | 1X1 | Terminal, Gray color, 2,5mm ² | | | | | | | | | | | | | | | | | | |
| | 1X1 | Terminal, Gray color, 2,5mm ² | | | | | | | | | | | | | | | | | | |
| | 1X1 | Terminal, Gray color, 2,5mm ² | | | | | | | | | | | | | | | | | | |
| | 1X1 | Fused terminal, gray color, 2,5mm ² | | | | | | | | | | | | | | | | | | |
| | 1X1 | Fused terminal, gray color, 2,5mm ² | | | | | | | | | | | | | | | | | | |
| D | 1X2 | Fused terminal, gray color, 2,5mm ² | | | | | | | | | | | | | | | | | | |
| | 1X2 | Fused terminal, gray color, 2,5mm ² | | | | | | | | | | | | | | | | | | |
| | 1X2 | Fused terminal, gray color, 2,5mm ² | | | | | | | | | | | | | | | | | | |
| | 1X2 | Fused terminal, gray color, 2,5mm ² | | | | | | | | | | | | | | | | | | |
| E | | | | | | | | | | | | | | | | | | | | |
| | | | | | | | | | | | | | | | | | | | | |
| | | | | | | | | | | | | | | | | | | | | |
| | | | | | | | | | | | | | | | | | | | | |
| | | | | | | | | | | | | | | | | | | | | |
| | | | | | | | | | | | | | | | | | | | | |
| F | | | | | | | | | | | | | | | | | | | | |
| | | | | | | | | | | | | | | | | | | | | |
| | | | | | | | | | | | | | | | | | | | | |
| | | | | | | | | | | | | | | | | | | | | |
| | | | SCHULZ |  | <table border="1" style="font-size: 8px;"> <tr> <td></td> <td>NAME</td> <td>DATE</td> </tr> <tr> <td>DRAWN</td> <td>ANDERSON.SE</td> <td>25/09/2018</td> </tr> <tr> <td>CHECKED</td> <td>IDERALDO.CO</td> <td>07/11/2019</td> </tr> <tr> <td>APPROVED</td> <td>CARLOS.BR</td> <td>08/11/2019</td> </tr> </table> | | | NAME | DATE | DRAWN | ANDERSON.SE | 25/09/2018 | CHECKED | IDERALDO.CO | 07/11/2019 | APPROVED | CARLOS.BR | 08/11/2019 | Device tag list PROJ. CODE.: 814.0387-0 | SCALE: 1: 1 |
| | NAME | DATE | | | | | | | | | | | | | | | | | | |
| DRAWN | ANDERSON.SE | 25/09/2018 | | | | | | | | | | | | | | | | | | |
| CHECKED | IDERALDO.CO | 07/11/2019 | | | | | | | | | | | | | | | | | | |
| APPROVED | CARLOS.BR | 08/11/2019 | | | | | | | | | | | | | | | | | | |
| | | | SRP3025 230V PD 50/60Hz - CONTROL III | | | | PAGE | | | | | | | | | | | | | |
| | | | | | | | 9 / 5 | | | | | | | | | | | | | |

ATTENTION: This drawing is a SCHULZ COMPRESSORES Ltda property. All rights reserved. Is not allowed to copy its content without authorization. If you have any doubt, please contact Products Department of Schulz Compressors.



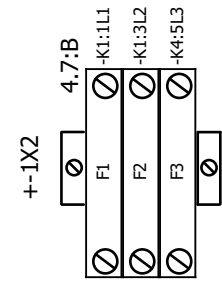
SCHULZ
SRP3025 230V PD 50/60Hz - CONTROL III



| | NAME | DATE |
|----------|-------------|------------|
| DRAWN | ANDERSON.SE | 25/09/2018 |
| CHECKED | IDERALDO.CO | 07/11/2019 |
| APPROVED | CARLOS.BR | 08/11/2019 |

| | |
|----------------------------------|-------------|
| Terminal Diagram : +-1X0 : +-1X1 | SCALE: 1: 1 |
| PROJ. CODE.: 814.0387-0 | PAGE 10 / 5 |

ATTENTION: This drawing is a SCHULZ COMPRESSORES Ltda property.
 All rights reserved. Is not allowed to copy its content without authorization.
 If you have any doubt, please contact Products Department of Schulz Compressors.



+-1X2

| CODE | Manufacturer | Quantity |
|------------------|--------------|----------|
| BTWS 2S CZ;Fusiv | WEG;WEG | 1;1;1 |
| BTWS 2S CZ;Fusiv | WEG | 1;1 |
| BTWS 2S CZ;TF B | WEG;WEG;WE | 1;1;1;1 |

Quantity of bornes 3

| | | | | | | | | |
|---------------------------------------|--|------------------------------|-------------|------------|-------------|--------------------------|-------------|-------------------------|
| SCHULZ | | SCHULZ COMPRESSORS | | NAME | DATE | Terminal Diagram : +-1X2 | SCALE: 1: 1 | |
| SRP3025 230V PD 50/60Hz - CONTROL III | | | | DRAWN | ANDERSON.SE | | 25/09/2018 | PROJ. CODE.: 814.0387-0 |
| | | CHECKED | IDERALDO.CO | 07/11/2019 | 11 / 5 | | | |
| | | APPROVED | CARLOS.BR | 08/11/2019 | | | | |