



UNDERSTANDING YOUR PAINT SHOP

A proper understanding of your paint shops air quality needs are necessary to maximize efficiency and eliminate down time and costly rework. By supplying the following information, Tsunami Compressed Air Solutions™ can provide recommendations that will provide long term solutions to save you time and money.

For a further understand of your facility's air requirements, see Facility Analysis on pg. 15

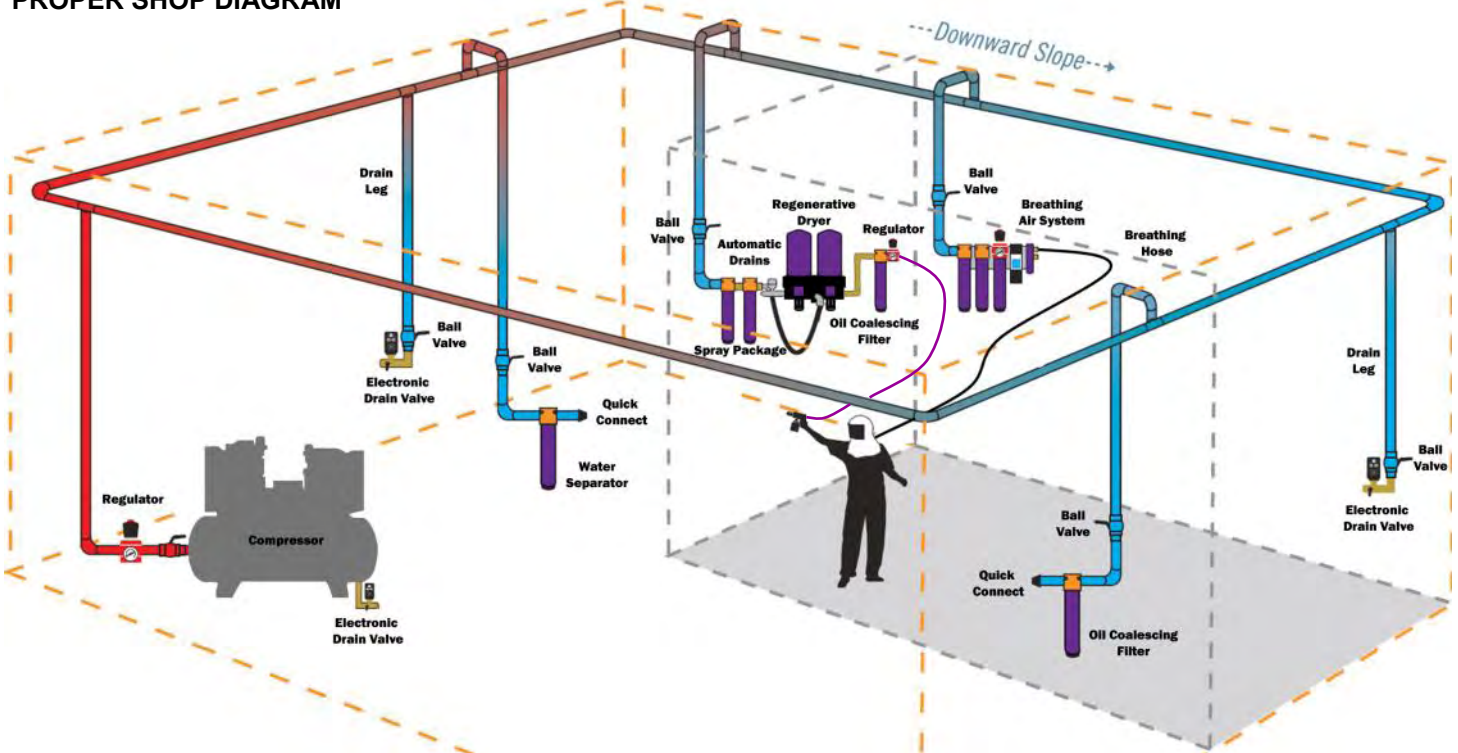
The Spray Booth

- How many spray booths are there? _____
- What type of booths do you have? ___Downdraft ___Cross Flow ___Semi Downdraft
- How many spray drops in each booth? _____
- What is the humidity reading in the booth(s)? _____%RH _____%RH _____%RH
- Is there air preparation at the booth? (filters or dryers) ___Y ___N
 - If yes, what brand or type? (ex: SATA, DeVilbiss, Sharpe, Camair, RTI, etc.) _____
- Is the shop spraying waterborne paint? ___Y ___N
 - If yes, how are you drying the basecoats? ___Booth Fans ___Handheld Blowers/Stands ___other
 - If other, what is being used? _____
- Does the shop do mostly collision work or completes? _____

The Paint Shop

- How many painters will be using the air system? _____
- How many shop employees total will be using the air system? _____
- Is the air system a looped system or a "dead end"/"dead stick system"? _____
- What is the approximate distance from the compressor to the booth? _____ Ft. (___paces)
- What is the approximate line size of the main air line? _____
- What is the approximate line size of the supply air lines used in shop? _____
- Are there air leaks in the piping, at air fittings, or air hoses? ___Y ___N
- What material is the piping made from? ___Copper ___Black Iron ___Galvanized ___PVC
 - (Tsunami Compressed Air Solutions™ does not recommend PVC or other plastic piping)

PROPER SHOP DIAGRAM





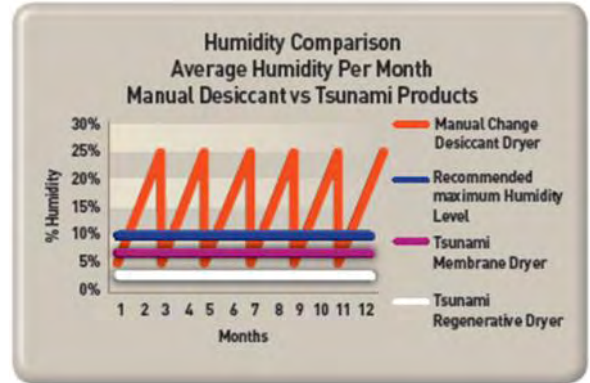
WHAT IS THE TRUE COST OF YOUR DRYING SYSTEM?

Did you buy your system because of the low upfront cost?

Do you perform maintenance as specified?

Do you know what the true cost of your current system is?

Manual change desiccant systems require you to perform maintenance by monitoring a moisture indicator. Unfortunately, when the indicator starts to change color your air has already exceeded the humidity threshold that the paint companies recommend by 100%. This results in poor paint jobs!



Footnote: Actual system results will vary based on climatic conditions, shop environment, maintenance and other factors

Annual Maintenance Cost Comparison	1 st Stage Annual Cost	2 nd Stage Annual Cost	Annual Media Cost	Year 1	Year 2	Year 3	Total Over 3 Years
Manual Desiccant Dryer Systems	\$100	\$100	\$540	\$740	\$740	\$740	\$2,220
Tsunami Membrane Dryer	\$0	\$80	\$900 *	\$80	\$80	\$980	\$1140
Tsunami Regenerative Dryer	\$0	\$90	\$440 **	\$90	\$90	\$520	\$700

* Based on a membrane core replacement after 3 years of service.

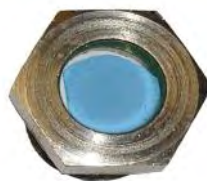
** Based on a typical 2 tower replacement in year 3.

DID YOU KNOW?

- Properly controlling air pressure throughout your shop can help save 10-15% of your compressed air energy costs.
- Repairing an audible air leak can save you \$50 or more per year in energy used to drive your compressor.
- When sizing a compressor, you can figure 2 to 2.5Hp per person, depending on the pressure setting of the compressor.
- Proper control of air volume (CFM) will make all your air drying and filtration technology perform at their rated capacity. Most pieces of equipment have a manufacturer's specification of volume consumption along with the recommended operating pressure.
- Improper use of volume can cause an "over-flowing" of the rated capacity of your equipment which causes a carry over of moisture and contaminants.



Many OSHA approved blow off guns can consume up to 35 CFM, the equivalent of a 10Hp compressor



Many color changing indicators used with desiccant systems do not change color before 20% rH.



The higher the air pressure supply to air amplifier stands used with waterborne paint increases the amount of air volume they consume.



SOLVENT & WATERBORNE SPRAY BOOTH PACKAGES

- **Waterborne Ready Systems**
- Low Relative Humidity - down to .01%
- Low Dew Points - down to -80°F
- Low cost to maintain - under \$100/yr on average
- Easy maintenance - replace coalescing filter every 6 months
- Expandable Drying Technology - Does not require buying new, larger dryer to increase shop's capacity

Single Booth Package - 1 Drop - Waterborne

Double Booth Package - 2 Drops - Solvent *

Recommended P/Ns:

- (1) 21999-0710 10Hp Tsunami Regenerative Drying System
- (1) 21999-0494 Tsunami Filtration Package #7
- (1) 21999-0449 35' Tsunami Ultra-flo Spray Hose

* Additional filter and hose needed for 2 drop solvent application



Double Booth Package - 2 Drops - Waterborne

Triple Booth Package - 3 Drops - Solvent *

Recommended P/Ns:

- (1) 21999-0715 15Hp Tsunami Regenerative Drying System
- (2) 21999-0494 Tsunami Filtration Package #7
- (2) 21999-0449 35' Tsunami Ultra-flo Spray Hose

* Additional filter and hose needed for 3 drop solvent application



SPECIALTY SPRAY PACKAGES

These filter systems should only be used for light use applications such as air brushing, waterborne gun cleaners, and spot welders. For normal to heavy use conditions, use our 50 CFM Filter packages.



Package #4 - 20CFM
P/N: 21999-0677
 Special spray package with water separator, oil coalescing filter and regulator



Package #6 - 20CFM
P/N: 21999-0678
 Special spray package with water separator, oil coalescing filter, activated carbon filter and regulator



PAINT SHOP SOLUTIONS



Maximizing your shop's performance is one of Suburban Manufacturing's main focuses. Whether drying the air for the paint shop or the entire facility, the Tsunami Ultra Drying Systems provide "the solution" for clean, dry air. Our Ultra Systems provide easy installation and additional storage which helps reduce the shop's ability to overrun the drying system.

- 3-year Warranty
- Built-in bypass circuit
- 80 gallon storage tank for storing exceptionally dry air
- Large Tsunami water separator and oil coalescing filter to pre-filter incoming air
- Moisture Minder automatic piston drains for pre-filters
- Outlet regulator allows for air conservation throughout facility
- Easy installation - unit comes preassembled (as shown)



Wall mounted units provide the best solution for your facility when space is limited. Systems are available from 10-30Hp.

For more information on Complete Tsunami Drying Systems see pgs. 4-5

****REMINDER****

Add Your Booth Filtration Package, Spray Hose and Compressor Drain Kit
****Components must be ordered separately from drying systems****

GOOD FILTRATION



Package #7 - 50CFM
P/N: 21999-0494
 Oil coalescing filter and regulator

BETTER FILTRATION



Package #4 - 50CFM
P/N: 21999-0253
 Water separator, oil coalescing filter and regulator

BEST FILTRATION



Package #6 - 50CFM
P/N: 21999-0257
 Water separator, oil coalescing filter, activated carbon filter and regulator



P/N: 21999-0449
 35' Tsunami Ultra-flo Spray Hose
P/N: 21999-0450
 50' Tsunami Ultra-flo Spray Hose



P/N: 21999-0177
 Moisture Minder EDV
P/N: 21999-0316
 EDV Basic Installation Kit